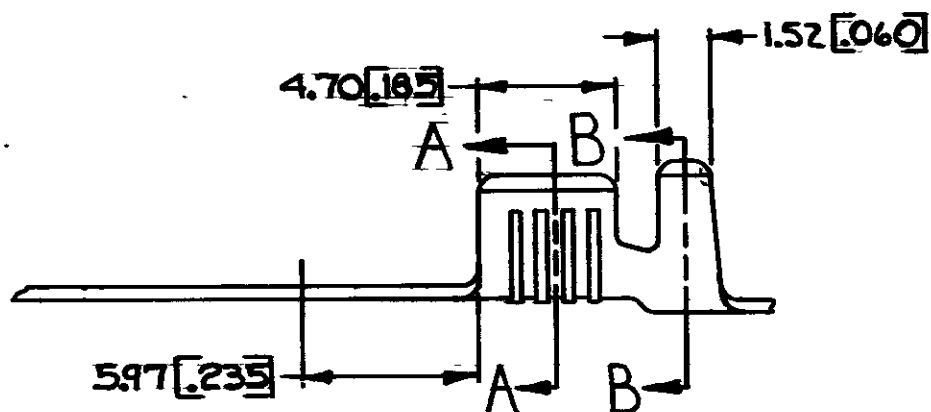
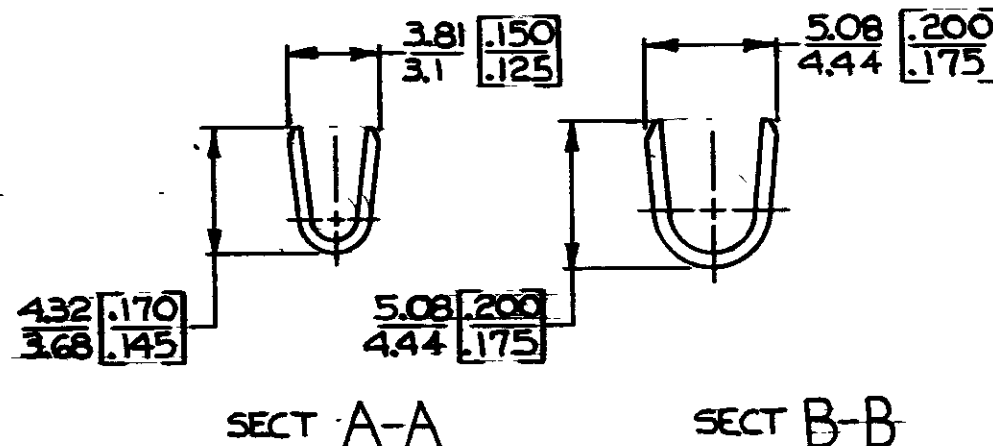
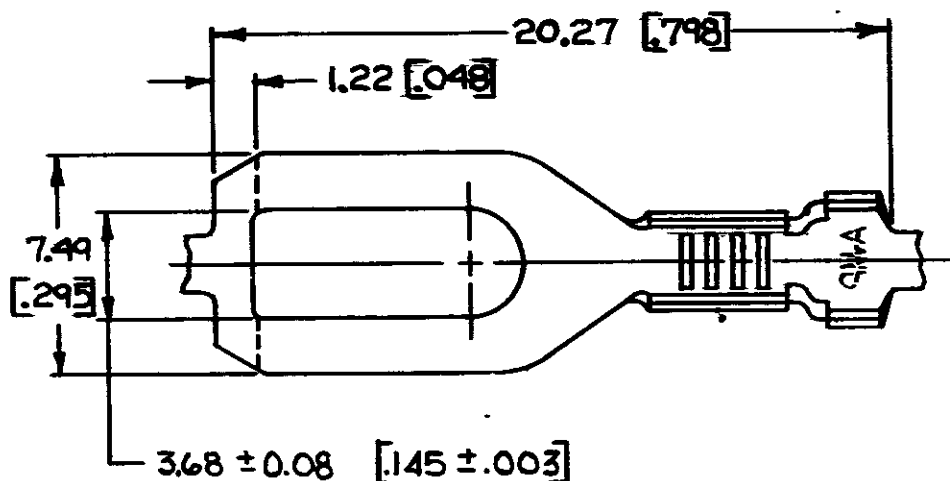
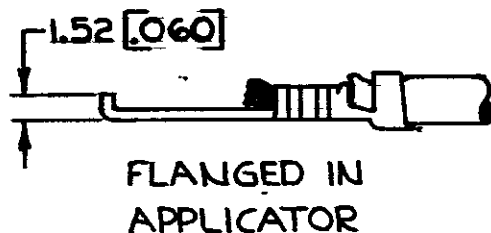


© COPYRIGHT 1964 BY AMP INCORPORATED, HARRISBURG, PA. ALL INTERNATIONAL RIGHTS RESERVED. AMP INCORPORATED PRODUCTS COVERED BY U. S. AND FOREIGN PATENTS AND/OR PATENTS PENDING.

| REVISIONS | | | | | |
|-----------|------|-----|----------------------------|-----------------|----------|
| P | ZONE | LTR | DESCRIPTION | DATE | APPROVED |
| ✓ | | D | REDRAWN/REVISED A-3943 | 6/21/78 | DEF/SS |
| ✓ | | E | INSUL. SUPP LENGTH AF-0781 | 2-20-85 | RLS/GY |
| ✓ | | F | REVISED AF1994 | 7/1/86 | SS/RPF |
| ✓ | | G | OBS -1 | AF-4503 5/19/88 | GY |



OBSOLETE

| | | | | | |
|-------------|--|----------------------------|-------------|---------------------|--|
| M 3.5 #6 | 0.8 - 2.0 mm ² [18 - 14] | 2.54 - 3.56 [100 - 140] | TIN NONE | 0.46 [018] BRASS | 60773-2A 60773-2 60773-1A 60773-1 |
| STUD SIZE | WIRE SIZE | INSULATION RANGE | FINISH | MATERIAL | PART NO |

| | | |
|--|---|-------------------------------------|
| UNLESS OTHERWISE SPECIFIED DIMENSIONS ARE IN MILLIMETERS TOLERANCES ON: DECIMALS ±0.30 [015] ANGLES ±1° | CONTRACT NO | AMP INCORPORATED Harrisburg, Pa. |
| | DR CHKD APPD APPD DSGN APPD OTHER APPD | |
| MATERIAL SEE TABLE | NAME SPADE | SIZE B |
| FINISH SEE TABLE | CODE IDENT NO 00779 | DRAWING NO 60773 |
| | SCALE | SHEET |

- CONTINUOUS STRIP, ON REELS
 - DIMENSIONS IN BRACKETS ARE IN INCHES.
- ⚠ SUFFIX LETTER MUST BE USED ONLY WHEN ORDERING APPLICATOR TOOLING.

METRIC

X-ON Electronics

Largest Supplier of Electrical and Electronic Components

Click to view similar products for [Terminals](#) category:

Click to view products by [TE Connectivity](#) manufacturer:

Other Similar products are found below :

[00-054007-01074-6](#) [00-054007-70206-1](#) [00-054007-70210-8](#) [00-054007-70217-7](#) [00-054007-70226-9](#) [00-054007-70228-3](#) [00-054007-70248-1](#) [00-054007-70256-6](#) [00-054007-70301-3](#) [00-054007-70316-7](#) [0-0320562-0](#) [00-054007-49560-4](#) [00-054007-70209-2](#) [00-054007-70225-2](#) [00-054007-70227-6](#) [00-054007-70231-3](#) [00-054007-70241-2](#) [00-054007-70242-9](#) [00-054007-70244-3](#) [00-054007-70246-7](#) [00-054007-70263-4](#) [00-054007-70288-7](#) [00-054007-70290-0](#) [00-054007-70300-6](#) [00-054007-70304-4](#) [01-2065-1-0216](#) [01-2900-1-04412](#) [00581P0075](#) [600TS-10](#) [60205-1](#) [604200-1](#) [605601-1](#) [60598-1-CUT-TAPE](#) [61314-6-C](#) [61810-3](#) [61-S](#) [61-SN](#) [626-0194](#) [62-NBM-A](#) [62-SN](#) [62-SP](#) [63-S](#) [640179-1](#) [M55155/059I03](#) [M55155/079C01](#) [M55155/099H02](#) [M55155/109H01](#) [M55155/109H02](#) [M55155/12XH05](#) [M55155/16XH02](#)