

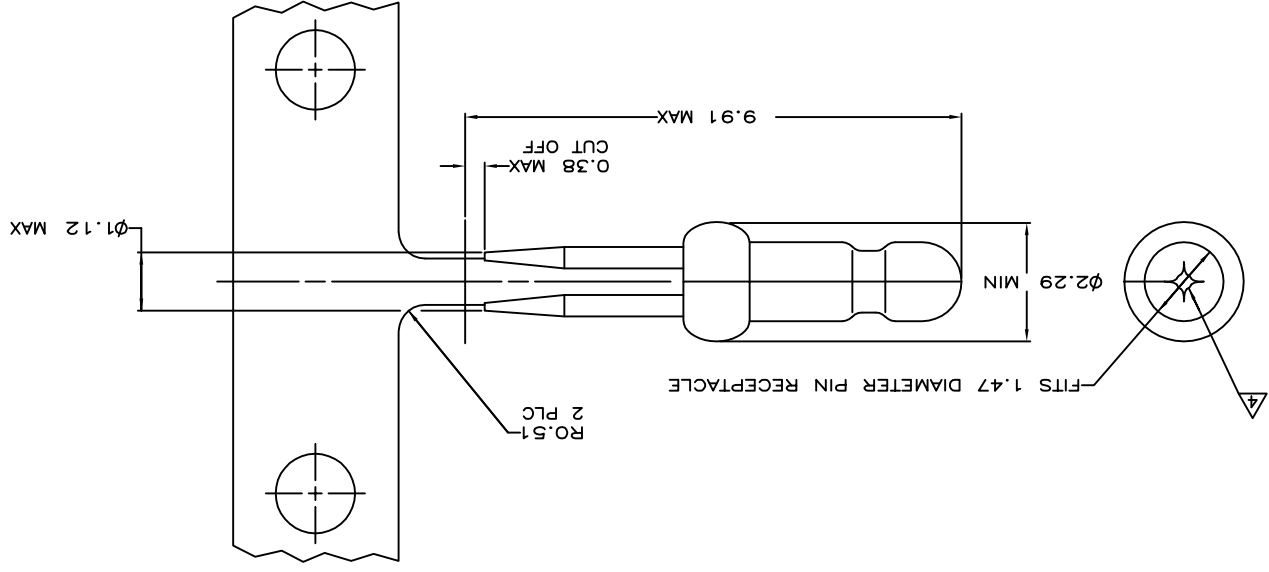
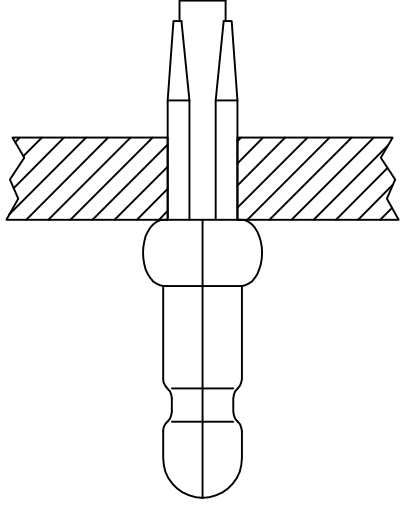
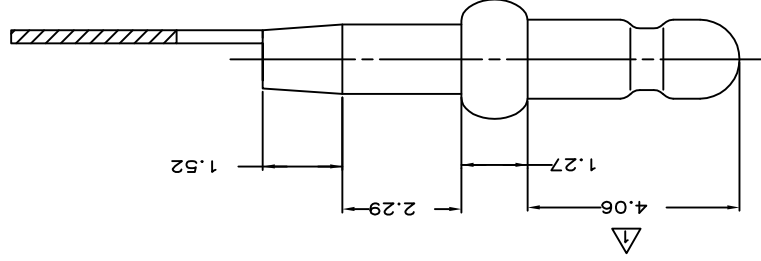
MM	IN	MM	IN	MM	IN	MM	IN
0.0076	0.00030	0.25	0.10	1.27	0.50	2.36	0.93
0.00127	0.00050	0.38	0.15	1.47	0.58	4.06	1.60
0.00381	0.00150	0.51	0.20	1.52	0.60	8.00	3.15
0.05	0.02	1.12	0.44	1.57	0.62	8.26	3.25
0.13	0.05	1.17	0.46	2.29	0.90	9.91	3.90

METRIC

CUSTOMER DRAWING		SCALE	SHEET	REV	AP3
0.00000		15:1	1	1	AP3
WEIGHT	114-1008	SIZE	CAGE CODE	DRAWING NO.	RESTRICTED TO
0.00000	108-1025	A2	00779	60802	
PIN, 0.58 DIAMETER, PHOSPHER BRONZE, PRESS FIT, P.C. CONTACT					
TE Connectivity					

FINISH	PART NUMBER
PRE TIN	60802-2
	60802-1
	3-60802-1

OBSOLETE



- 1. 0.0076 MIN GOLD PLATING IN THIS AREA WITH 0.00381 MIN MATTE TIN LEAD ON THE REMAINDER. BOTH OVER 0.00127 MIN NICKEL UNDERPLATE.
- 2. FITS 1.17 - 1.27 DIAMETER HOLE IN A 1.57 OR 2.36 PRINTED CIRCUIT BOARD.
- 3. PARTS TO COMPLY WITH AMP SOLDERABILITY SPECIFICATION 109-11-3.
- 4. 0.05 - 0.25 DIAMETER OPENING REQUIRED IN TIP OF PIN.
- 5. APPLICATOR FEED: 8.00 - 8.26
- 6. 0.00076 MIN GOLD PLATING IN THIS AREA WITH 0.00381 MIN MATTE TIN ON THE REMAINDER. BOTH OVER 0.00127 MIN NICKEL UNDERPLATE.

REV	DATE	DESCRIPTION	BY	CHK	APP
1	12SEP17	REVISIONS			
2		REMOVED PER ECR-17-013047			
3					
4					

THIS DRAWING IS UNPUBLISHED. ALL RIGHTS RESERVED. RELEASED FOR PRODUCTION

A
B
C
D

A
B
C
D

1 2 3 4

X-ON Electronics

Largest Supplier of Electrical and Electronic Components

Click to view similar products for te connectivity manufacturer:

Other Similar products are found below :

[570416-000](#) [CLTEQ-M81CE-SSRELAY-4-20V](#) [D38999/24FJ4AN](#) [358838-000](#) [4-1195131-0](#) [650069-000](#) [SMD100-2](#) [CB-1022B-78](#)
[RM707012](#) [RP410012](#) [MMS42](#) [1-640426-8](#) [2EDL4CM](#) [DTS20W19-11PD-3028-LC](#) [RM202615](#) [NC6-P104-06](#) [MSPS103B](#) [DTS26F21-41AE](#) [DTS26F21-41PE-LC](#) [DTS26F21-11SE-3028-LC](#) [1932144-1](#) [293545-4](#) [LVR125S](#) [MS27466T25F4PB](#) [CKB-38-78010](#)
[1206SFF150F/63-2](#) [D38999/20JB35HA](#) [D38999/24WJ20PA](#) [1754138-1](#) [TE1500A2R2J](#) [DTS24F25-29PC-3028-LC](#) [D38999/24WG11HA](#)
[D38999/24WG11HN](#) [MS27467T21F11H](#) [DJT16E21-11HA](#) [1206SFH150F/24-2](#) [DTS24F19-11SC-3028-LC](#) [DTS24F21-41HN-LC](#)
[DTS24F21-41AN](#) [DTS24F21-41PN-LC](#) [RP330024](#) [MS27467T21F35J](#) [MS27467T21F11J](#) [MS27467T21F16H-LC](#) [MS27467T21F35H](#)
[MS27467T21F41H-LC](#) [DJT16E21-11PA-LC](#) [DJT16E21-11HA-LC](#) [DJT16E21-11AA](#) [MS27467T21B11JA](#)