

|                      |             |     |
|----------------------|-------------|-----|
| DESCRIPTION          | APP'D./DATE | REV |
| C. W. J. [Signature] | E-27-90     | 2   |

**SAFETY ORGANIZATION(S).**

THIS FILTER HAS BEEN FORMALLY RECOGNIZED, CERTIFIED OR APPROVED BY THE LISTED AGENCY. THEREFORE, ALL TEST/REQUIREMENTS SPECIFIED IN THE LATEST REVISION OF THE FOLLOWING AGENCY STANDARDS HAVE BEEN MET.

UL 1283  
CSA 22.2 NO. 0, 0.4, 8

**OPERATING SPECIFICATIONS:**

LINE VOLTAGE/CURRENT, 45 OR 60 AMP., 250VAC PHASE/NEUTRAL-GND  
45 OR 60 AMP., 440VAC PHASE/PHASE  
50-60HZ  
LINE FREQUENCY, 1.4mA @ 120V 60HZ  
MAX. CASE RISE @ RATED CURRENT, 40°C  
MAX. LEAKAGE CURRENT, EACH 3.4mA @ 250V 50HZ  
LINE TO GROUND  
OPERATING AMBIENT TEMP. RANGE, -10°C TO +40°C @ RATED CURRENT, I<sub>r</sub>

IN AN AMBIENT, T<sub>a</sub>, HIGHER THAN 40°C, THE MAXIMUM OPERATING CURRENT, I<sub>o</sub>, IS AS FOLLOWS,

$$I_o = I_r \sqrt{\frac{85 - T_a}{45}}$$

**RELIABILITY SPECIFICATIONS:**

STORAGE TEMPERATURE, -25°C TO +85°C  
HUMIDITY, 21 DAYS @ 40°C 95% RH

**TEST SPECIFICATIONS:**

INDUCTANCE, 45A = 1.1mH NOMINAL 60A = 0.74mH NOMINAL  
GROUND CHOKES, 45A = .261mH NOMINAL 60A = .242mH NOMINAL  
CAPACITANCE, (MEASURED @ 1 KHZ, 0.25 VAC MAX., 25°C ±1°C)  
PHASE/NEUTRAL TO GROUND, .026µF ±20%  
PHASE TO NEUTRAL, 2.0µF ±20%  
DISCHARGE RESISTOR, 165K OHMS  
LINE/GROUND AND LINE/LINE 6000 MΩ (MIN) AT 100 VDC  
INSULATION RESISTANCE (W/O DISCHARGE RESISTOR) 20°C AND 50% RH

**RECOMMENDED RECEIVING INSPECTION HIPOUT.**

PHASE/NEUTRAL TO GROUND, 1500 VAC FOR 1 MINUTE  
PHASE TO NEUTRAL, 1450 VDC FOR 1 MINUTE

**FILTER APPROVAL:**

THE BEST WAY TO SELECT AND QUALIFY A FILTER IS FOR YOUR ENGINEERING TO TEST THE UNIT IN YOUR EQUIPMENT.

TOLERANCE EXCEPT AS NOTED  
DECIMAL: .XXX .XX .X ANGLES ± 1°  
ENGLISH: ±.030  
METRIC: ±

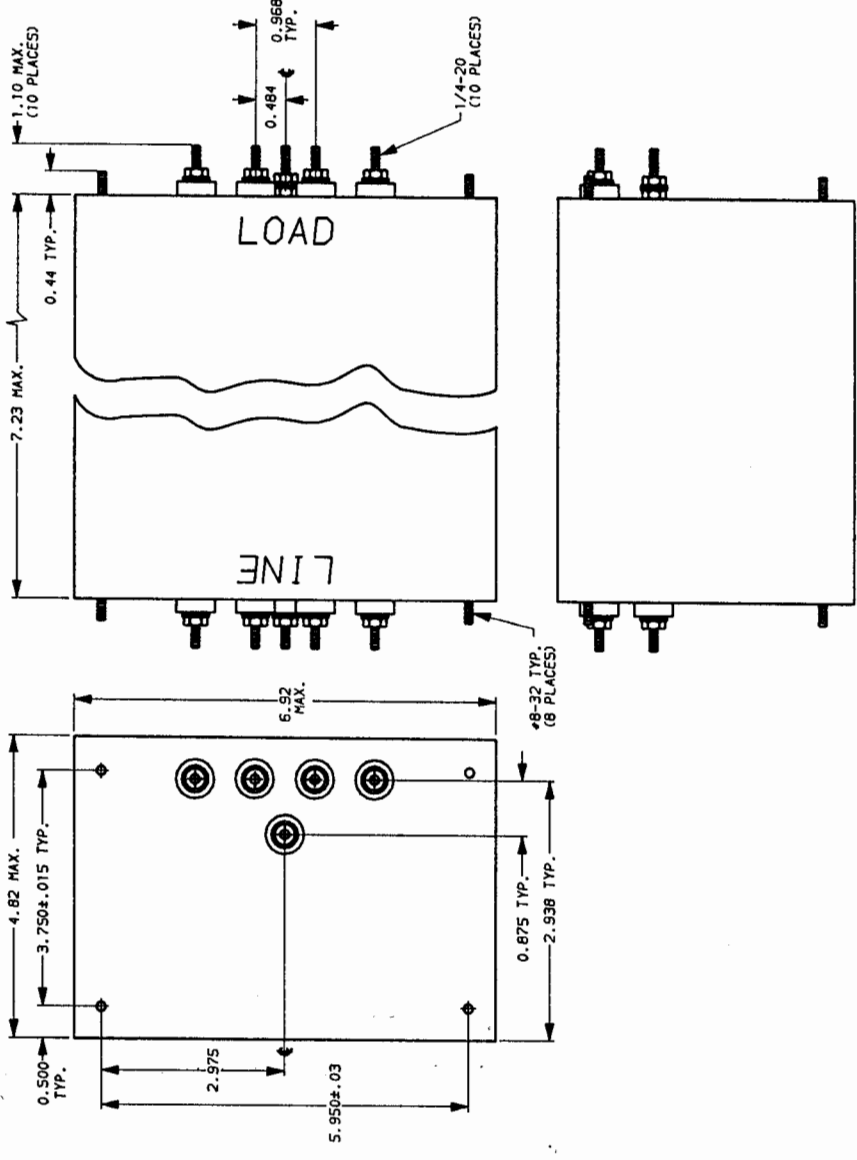
MATERIAL: AS SUPPLIED

FINISH:



POWER LINE FILTER

|         |         |                   |      |
|---------|---------|-------------------|------|
| SCALE   | DATE    | DRG. NO.          | REV. |
| NTS     | 4-25-89 | 45A1P6C & 60A1P6C | 2    |
| DRW. BY | LJD     | CFW               |      |



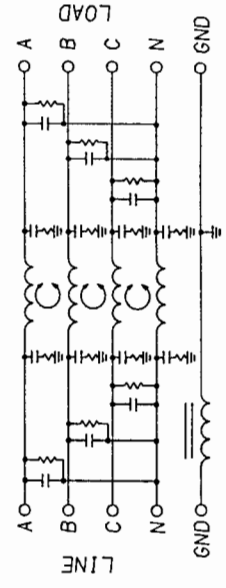
NOTE: COMMON MODE A-B-C & N SHORTED TOGETHER. DIFF. MODE MEASURED N TO A-B-C SHORTED TOGETHER.

| 50Ω - 50Ω (MINIMUM) INSERTION LOSS |            |
|------------------------------------|------------|
| FREQUENCY<br>MHZ                   | DIFF. MODE |
| .05                                | .15        |
| .15                                | .5         |
| .5                                 | 1.0        |
| 1.0                                | 5.0        |
| 5.0                                | 10.0       |
| 10.0                               | 30.0       |
| 30.0                               | 45         |
| 45                                 | 56         |
| 56                                 | 65         |
| 65                                 | 74         |
| 74                                 | 83         |
| 83                                 | 92         |
| 92                                 | 101        |
| 101                                | 110        |
| 110                                | 119        |
| 119                                | 128        |
| 128                                | 137        |
| 137                                | 146        |
| 146                                | 155        |
| 155                                | 164        |
| 164                                | 173        |
| 173                                | 182        |
| 182                                | 191        |
| 191                                | 200        |
| 200                                | 209        |
| 209                                | 218        |
| 218                                | 227        |
| 227                                | 236        |
| 236                                | 245        |
| 245                                | 254        |
| 254                                | 263        |
| 263                                | 272        |
| 272                                | 281        |
| 281                                | 290        |
| 290                                | 299        |
| 299                                | 308        |
| 308                                | 317        |
| 317                                | 326        |
| 326                                | 335        |
| 335                                | 344        |
| 344                                | 353        |
| 353                                | 362        |
| 362                                | 371        |
| 371                                | 380        |
| 380                                | 389        |
| 389                                | 398        |
| 398                                | 407        |
| 407                                | 416        |
| 416                                | 425        |
| 425                                | 434        |
| 434                                | 443        |
| 443                                | 452        |
| 452                                | 461        |
| 461                                | 470        |
| 470                                | 479        |
| 479                                | 488        |
| 488                                | 497        |
| 497                                | 506        |
| 506                                | 515        |
| 515                                | 524        |
| 524                                | 533        |
| 533                                | 542        |
| 542                                | 551        |
| 551                                | 560        |
| 560                                | 569        |
| 569                                | 578        |
| 578                                | 587        |
| 587                                | 596        |
| 596                                | 605        |
| 605                                | 614        |
| 614                                | 623        |
| 623                                | 632        |
| 632                                | 641        |
| 641                                | 650        |
| 650                                | 659        |
| 659                                | 668        |
| 668                                | 677        |
| 677                                | 686        |
| 686                                | 695        |
| 695                                | 704        |
| 704                                | 713        |
| 713                                | 722        |
| 722                                | 731        |
| 731                                | 740        |
| 740                                | 749        |
| 749                                | 758        |
| 758                                | 767        |
| 767                                | 776        |
| 776                                | 785        |
| 785                                | 794        |
| 794                                | 803        |
| 803                                | 812        |
| 812                                | 821        |
| 821                                | 830        |
| 830                                | 839        |
| 839                                | 848        |
| 848                                | 857        |
| 857                                | 866        |
| 866                                | 875        |
| 875                                | 884        |
| 884                                | 893        |
| 893                                | 902        |
| 902                                | 911        |
| 911                                | 920        |
| 920                                | 929        |
| 929                                | 938        |
| 938                                | 947        |
| 947                                | 956        |
| 956                                | 965        |
| 965                                | 974        |
| 974                                | 983        |
| 983                                | 992        |
| 992                                | 1001       |
| 1001                               | 1010       |
| 1010                               | 1019       |
| 1019                               | 1028       |
| 1028                               | 1037       |
| 1037                               | 1046       |
| 1046                               | 1055       |
| 1055                               | 1064       |
| 1064                               | 1073       |
| 1073                               | 1082       |
| 1082                               | 1091       |
| 1091                               | 1100       |
| 1100                               | 1109       |
| 1109                               | 1118       |
| 1118                               | 1127       |
| 1127                               | 1136       |
| 1136                               | 1145       |
| 1145                               | 1154       |
| 1154                               | 1163       |
| 1163                               | 1172       |
| 1172                               | 1181       |
| 1181                               | 1190       |
| 1190                               | 1199       |
| 1199                               | 1208       |
| 1208                               | 1217       |
| 1217                               | 1226       |
| 1226                               | 1235       |
| 1235                               | 1244       |
| 1244                               | 1253       |
| 1253                               | 1262       |
| 1262                               | 1271       |
| 1271                               | 1280       |
| 1280                               | 1289       |
| 1289                               | 1298       |
| 1298                               | 1307       |
| 1307                               | 1316       |
| 1316                               | 1325       |
| 1325                               | 1334       |
| 1334                               | 1343       |
| 1343                               | 1352       |
| 1352                               | 1361       |
| 1361                               | 1370       |
| 1370                               | 1379       |
| 1379                               | 1388       |
| 1388                               | 1397       |
| 1397                               | 1406       |
| 1406                               | 1415       |
| 1415                               | 1424       |
| 1424                               | 1433       |
| 1433                               | 1442       |
| 1442                               | 1451       |
| 1451                               | 1460       |
| 1460                               | 1469       |
| 1469                               | 1478       |
| 1478                               | 1487       |
| 1487                               | 1496       |
| 1496                               | 1505       |
| 1505                               | 1514       |
| 1514                               | 1523       |
| 1523                               | 1532       |
| 1532                               | 1541       |
| 1541                               | 1550       |
| 1550                               | 1559       |
| 1559                               | 1568       |
| 1568                               | 1577       |
| 1577                               | 1586       |
| 1586                               | 1595       |
| 1595                               | 1604       |
| 1604                               | 1613       |
| 1613                               | 1622       |
| 1622                               | 1631       |
| 1631                               | 1640       |
| 1640                               | 1649       |
| 1649                               | 1658       |
| 1658                               | 1667       |
| 1667                               | 1676       |
| 1676                               | 1685       |
| 1685                               | 1694       |
| 1694                               | 1703       |
| 1703                               | 1712       |
| 1712                               | 1721       |
| 1721                               | 1730       |
| 1730                               | 1739       |
| 1739                               | 1748       |
| 1748                               | 1757       |
| 1757                               | 1766       |
| 1766                               | 1775       |
| 1775                               | 1784       |
| 1784                               | 1793       |
| 1793                               | 1802       |
| 1802                               | 1811       |
| 1811                               | 1820       |
| 1820                               | 1829       |
| 1829                               | 1838       |
| 1838                               | 1847       |
| 1847                               | 1856       |
| 1856                               | 1865       |
| 1865                               | 1874       |
| 1874                               | 1883       |
| 1883                               | 1892       |
| 1892                               | 1901       |
| 1901                               | 1910       |
| 1910                               | 1919       |
| 1919                               | 1928       |
| 1928                               | 1937       |
| 1937                               | 1946       |
| 1946                               | 1955       |
| 1955                               | 1964       |
| 1964                               | 1973       |
| 1973                               | 1982       |
| 1982                               | 1991       |
| 1991                               | 2000       |

This document is proprietary to CORCOM INC. and is not to be reproduced nor used for manufacturing purposes except on CORCOM's order on prior written consent.

**NOTES:**

1.) LINE SIDE HAS INSULATED GROUND TERMINAL.



## X-ON Electronics

Largest Supplier of Electrical and Electronic Components

*Click to view similar products for [Power Line Filters](#) category:*

*Click to view products by [TE Connectivity](#) manufacturer:*

Other Similar products are found below :

[6609019-3](#) [6609026-5](#) [6609030-6](#) [6609973-2](#) [D30A](#) [7-1609090-5](#) [F2810](#) [F4456A](#) [F7382Z](#) [F7863Z](#) [FAHAV3100ZC000](#) [806276](#) [FN2020B-1-06](#) [FN2080B-10-06](#) [FN2410H-32-33](#) [FP144](#) [FS4153-20-06](#) [FS4353-500-99](#) [12-MMB-030-11-D](#) [DB4-393](#) [15811T200](#) [20B1](#) [LC630](#) [2B1](#) [1609080-2](#) [1609993-8](#) [1-6609070-1](#) [F1100AA02](#) [F1150CC10](#) [F1500CA10](#) [F1500CA15](#) [F4041Z](#) [F7585E](#) [1B1](#) [FN2070A-16-06](#) [FN2090A-20-06](#) [FN2090B-12-06](#) [FN2090Z-1-06](#) [FN2410H-25-33](#) [FN2410H-60-34](#) [FN2410H-8-44](#) [FN2412H-8-44](#) [FN323B-6-01](#) [FN3258H-130-35](#) [FN610R-3-06](#) [20EHQ7](#) [20EHZ7](#) [20K1](#) [30B6](#) [3K1](#)