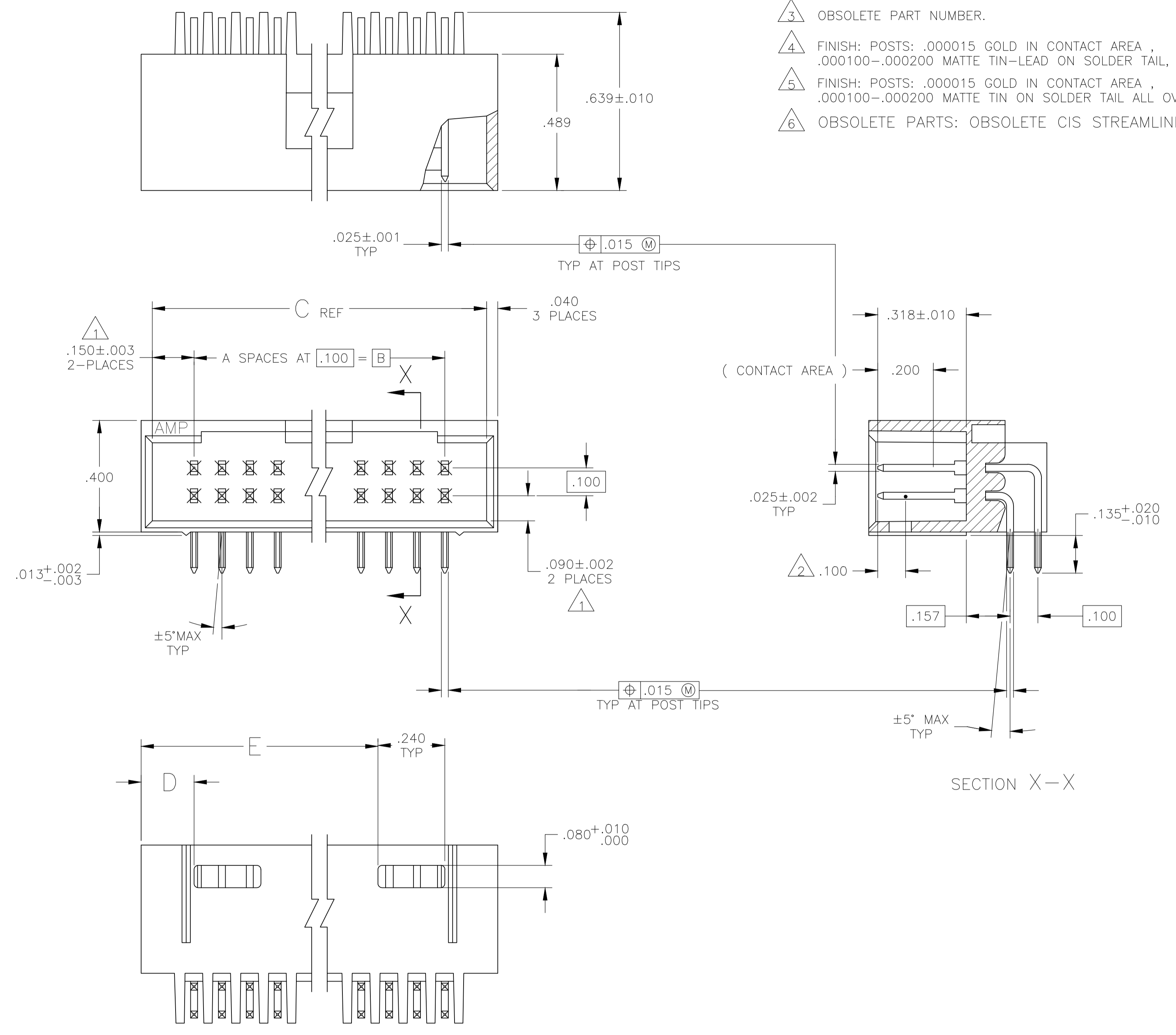
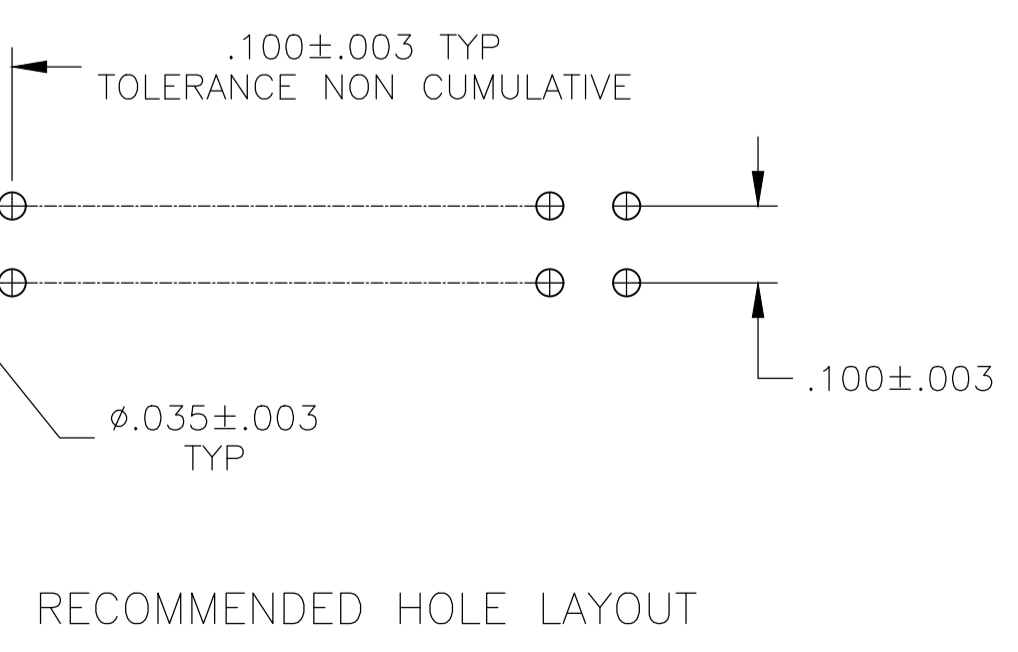


REVISIONS					
REV	DATE	BY	APP'D	DESCRIPTION	REV
H4	08FEB2018	SD	PS	PART STATUS UPDATED IN PART LIST TABLE	

- 1 THE NOTED DIMENSIONS APPLY AT THE INTERSECTION OF THE POST AND HOUSING.
- 2 POINT OF MEASUREMENT FOR PLATING THICKNESS.
- 3 OBSOLETE PART NUMBER.
- 4 FINISH: POSTS: .000015 GOLD IN CONTACT AREA, .000100-.000200 MATTE TIN-LEAD ON SOLDER TAIL, ALL OVER .000050 NICKEL.
- 5 FINISH: POSTS: .000015 GOLD IN CONTACT AREA, .000100-.000200 MATTE TIN ON SOLDER TAIL ALL OVER .000050 NICKEL.
- 6 OBSOLETE PARTS: OBSOLETE CIS STREAMLINING PER D.RENAUD/D.SINISI



REV	DATE	BY	APP'D	DESCRIPTION	REV					
6				OBSOLETE						
5	3.490	.190	3.800	3.500	35	72	-8-102570-3-			
5	3.390	.190	3.700	3.400	34	70	-8-102570-2-			
5	3.290	.190	3.600	3.300	33	68	-8-102570-1-			
5	3.190	.190	3.500	3.200	32	66	-8-102570-0-			
5	3.090	.190	3.400	3.100	31	64	-7-102570-9-			
5	2.990	.190	3.300	3.000	30	62	-7-102570-8-			
5	2.890	.190	3.200	2.900	29	60	-7-102570-7-			
5	2.790	.190	3.100	2.800	28	58	-7-102570-6-			
5	2.690	.190	3.000	2.700	27	56	-7-102570-5-			
5	2.590	.190	2.900	2.600	26	54	-7-102570-4-			
5	2.490	.190	2.800	2.500	25	52	-7-102570-3-			
5	2.390	.190	2.700	2.400	24	50	-7-102570-2-			
5	2.290	.190	2.600	2.300	23	48	-7-102570-1-			
6	2.190	.190	2.500	2.200	22	46	-7-102570-0-			
5	2.090	.190	2.400	2.100	21	44	-6-102570-9-			
6	1.990	.190	2.300	2.000	20	42	-6-102570-8-			
5	1.790	.190	2.100	1.800	18	38	-6-102570-7-			
5	1.690	.190	2.000	1.700	17	36	-6-102570-6-			
5	1.590	.190	1.900	1.600	16	34	-6-102570-5-			
5	1.490	.190	1.800	1.500	15	32	-6-102570-4-			
6	1.390	.190	1.700	1.400	14	30	-6-102570-3-			
5	1.290	.190	1.600	1.300	13	28	-6-102570-2-			
5	1.190	.190	1.500	1.200	12	26	-6-102570-1-			
6	1.090	.190	1.400	1.100	11	24	-6-102570-0-			
5	.990	.190	1.300	1.000	10	22	-5-102570-9-			
5	.890	.190	1.200	.900	9	20	-5-102570-8-			
5	---	.490	1.100	.800	8	18	-5-102570-7-			
5	---	.390	1.000	.700	7	16	-5-102570-6-			
5	---	.390	.900	.600	6	14	-5-102570-5-			
5	---	.290	.800	.500	5	12	-5-102570-4-			
5	---	.290	.700	.400	4	10	-5-102570-3-			
5	---	.190	.600	.300	3	8	-5-102570-2-			
5	1.890	.190	2.200	1.900	19	40	-5-102570-1-			
6	3.490	.190	3.800	3.500	35	72	-3-102570-3-			
4	3.390	.190	3.700	3.400	34	70	-3-102570-2-			
4	3.290	.190	3.600	3.300	33	68	-3-102570-1-			
4	3.190	.190	3.500	3.200	32	66	-3-102570-0-			
4	3.090	.190	3.400	3.100	31	64	-2-102570-9-			
4	2.990	.190	3.300	3.000	30	62	-2-102570-8-			
4	2.890	.190	3.200	2.900	29	60	-2-102570-7-			
4	2.790	.190	3.100	2.800	28	58	-2-102570-6-			
4	2.690	.190	3.000	2.700	27	56	-2-102570-5-			
4	2.590	.190	2.900	2.600	26	54	-2-102570-4-			
4	2.490	.190	2.800	2.500	25	52	-2-102570-3-			
4	2.390	.190	2.700	2.400	24	50	-2-102570-2-			
4	2.290	.190	2.600	2.300	23	48	-2-102570-1-			
4	2.190	.190	2.500	2.200	22	46	-2-102570-0-			
6	2.090	.190	2.400	2.100	21	44	-1-102570-9-			
4	1.990	.190	2.300	2.000	20	42	-1-102570-8-			
4	1.790	.190	2.100	1.800	18	38	-1-102570-7-			
4	1.690	.190	2.000	1.700	17	36	-1-102570-6-			
4	1.590	.190	1.900	1.600	16	34	-1-102570-5-			
4	1.490	.190	1.800	1.500	15	32	-1-102570-4-			
6	1.390	.190	1.700	1.400	14	30	-1-102570-3-			
4	1.290	.190	1.600	1.300	13	28	-1-102570-2-			
4	1.190	.190	1.500	1.200	12	26	-1-102570-1-			
4	1.090	.190	1.400	1.100	11	24	-1-102570-0-			
4	.990	.190	1.300	1.000	10	22	-102570-9-			
4	.890	.190	1.200	.900	9	20	-102570-8-			
4	---	.490	1.100	.800	8	18	-102570-7-			
4	---	.390	1.000	.700	7	16	-102570-6-			
4	---	.390	.900	.600	6	14	-102570-5-			
4	---	.290	.800	.500	5	12	-102570-4-			
4	---	.290	.700	.400	4	10	-102570-3-			
4	---	.190	.600	.300	3	8	-102570-2-			
4	1.890	.190	2.200	1.900	19	40	-102570-1-			
PLATING				E	D	C	B	A	NO OF POSN	ASSEMBLY PART NUMBER



THIS DRAWING IS A CONTROLLED DOCUMENT.

DIMENSIONS: INCHES	TOLERANCES UNLESS OTHERWISE SPECIFIED:	0 PLC ± -	1 PLC ± -	2 PLC ± -	3 PLC ± .005	4 PLC ± -	ANGLES ± -
--------------------	--	-----------	-----------	-----------	--------------	-----------	------------

MATERIAL: HOUSING: FINE RETENTANT THERMOPLASTICS (SOUR: BLACK); POSTS: POS: BRONZE; FINISH: SEE TABLE

APPROVED: H. MOLL (25-8-87), L. A. MAYER (21-8-87), R. FEJDT (21-8-87)

NAME: HDR ASSY, MOD II SHROUDED .100X.100 C/L 4 SIDES, DR RIGHT ANGLE W/ .025 SQ POSTS

SIZE: A1; CAGE CODE: 00779; DRAWING NO: 102570; WEIGHT: -

CUSTOMER DRAWING; SCALE: 4:1; SHEET: 1 OF 1; REV: H4

STE TE Connectivity

X-ON Electronics

Largest Supplier of Electrical and Electronic Components

Click to view similar products for [Headers & Wire Housings](#) category:

Click to view products by [TE Connectivity](#) manufacturer:

Other Similar products are found below :

[892-18-020-10-001101](#) [58102-G61-06LF](#) [582553-1](#) [0009485154](#) [009176003701906](#) [0050291907](#) [LY20-4P-DT1-P1E-BR](#) [02.125.8002.8](#)
[609-3404](#) [61062-3](#) [61082-181009](#) [622-3653LF](#) [63453-116](#) [636-1030](#) [636-1427](#) [636-3427](#) [636-4007](#) [641938-9](#) [641991-4](#) [644827-2](#) [65817-](#)
[010LF](#) [65817-015LF](#) [65863-015LF](#) [66207-023LF](#) [67095-007LF](#) [67601157](#) [68645-018](#) [68648-049](#) [70.362.1628.0](#) [70-4210](#) [70-4226B](#) [70-](#)
[4853B](#) [707-5020](#) [707-5028](#) [71.350.2428.0](#) [71918-208LF](#) [71961-016LF](#) [733-134](#) [733-162](#) [754199-000](#) [760-3052](#) [79531-3000](#) [FCN-](#)
[360C032-B](#) [FCN-367T-T012/H](#) [FCN-723D010/2](#) [80.063.4001.1](#) [800-90-010-10-002000](#) [801-43-002-10-013000](#) [801-43-006-10-002000](#)
[801-93-011-10-001000](#)