



Einsatzbereich: - 723 htec

TE Teile Nr.: 61-0242-011-000
IC Ref. Nr.: 61.242.11

Elektrische Werte

Bemessungsstrom max. 23 A*
Durchgangswiderstand < 3 mOhm

Werkstoff

Kontakt Messing, vergoldet

Anschluss

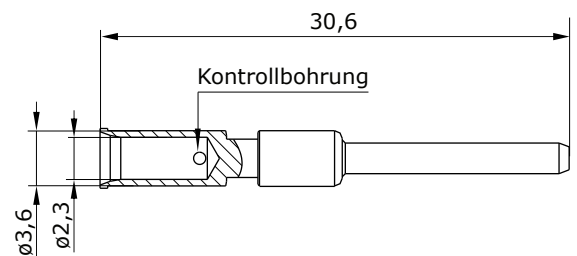
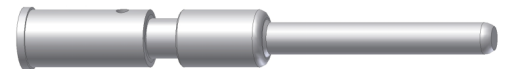
Anschlussart crimp
Anschlussbereich 0,35 - 2,5 mm²
Abisolierlänge 7 mm
Crimpeinstellungen sind individuell zu wählen

Mechanische Werte

Steckzyklen 500

Werkzeuge (nicht im Lieferumfang enthalten)

digitale Crimpzange, klein Best.-Nr.: C0.324.00
analoge Crimpzange, mittel Best.-Nr.: C0.201.00
(Positioniereinsatz für analoge Crimpzange Best.-Nr.: C0.138.00)
Crimpen -kraftunterstützt
Crimpmaschine Best.-Nr.: WA10672
digitaler Crimpeinsatz, klein Best.-Nr.: C0.372.00
Locator für C0.372.00 Best.-Nr.: C0.265.00
digitaler Crimpeinsatz, mittel Best.-Nr.: C0.373.00



Hauptabmessungen
Kontaktstift





Contact Pin \varnothing 2 mm

for: - 723 htec

TE part number: 61-0242-011-000
IC reference number: 61.242.11

Electrical Data

rated current max. 23 A*
contact resistance < 3 mOhm

Material

contact brass, gold plated

Termination

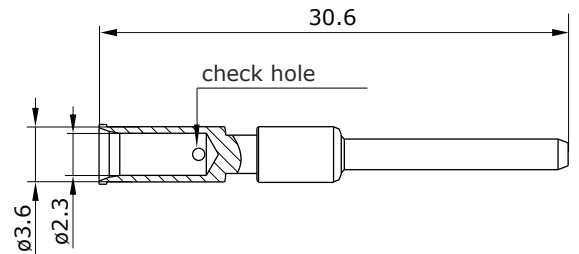
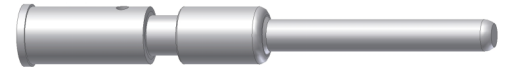
kind of termination crimp
cross-section 0.35 - 2.5 mm²
stripping length 7 mm
crimp settings select individually

Mechanical Data

mating cycles 500

Tools (not part of product contents)

digital crimping tool, small	order code: C0.235.00
analog crimping tool, medium	order code: C0.201.00
(positioner for analog crimping tool	order code: C0.138.00)
power crimping	
crimping machine	order code: WA10672
digital crimp insert, small	order code: C0.372.00
locator for C0.372.00	order code: C0.265.00
digital crimp insert, medium	order code: C0.373.00



Main Dimensions
contact pin

Y6-C896-000-0EN issued: 18.03.2011/MH; modified: 18.09.2017/KC

© 2017 TE Connectivity

TE Connectivity, TE connectivity (logo), intercontec (logo) and speedtec are trademarks.

While TE Connectivity (TE) has made every reasonable effort to ensure the accuracy of the information in this presentation, TE does not guarantee that it is error-free, nor does TE make any other representation, warranty or guarantee that the information is accurate, correct, reliable or current. TE reserves the right to make any adjustments to the information contained herein at any time without notice. TE expressly disclaims all implied warranties regarding the information contained herein, including, but not limited to, any implied warranties of merchantability or fitness for a particular purpose. The dimensions in this article are for reference purposes only and are subject to change without notice. Specifications are subject to change without notice. Consult TE for the latest dimensions and design specifications.

TE Connectivity Industrial GmbH
Bernrieder Straße 15
94559 Niederwinkling, Germany
+49 9962 2002 - 0
intercontec@te.com
www.intercontec.biz



* for max. wire cross-section

X-ON Electronics

Largest Supplier of Electrical and Electronic Components

Click to view similar products for [Circular Metric Connectors](#) category:

Click to view products by [TE CONNECTIVITY](#) manufacturer:

Other Similar products are found below :

[600X518037X](#) [6STD15PCR99B70A](#) [8R4000A16M020](#) [8R5000A16M005](#) [1200910002](#) [1203580030](#) [1200910008](#) [1200910011](#) [1300140094](#)
[130203-0054](#) [1300140026](#) [1300150099](#) [RF-12S1N8A90DU](#) [1-3637-600-5205](#) [1612618](#) [21036836414](#) [8R4006A16M010](#) [8R5006A18A120](#)
[1604232](#) [1R3006A20M005](#) [RF-12P1N8A80DU](#) [RF-12P1N8A90DU](#) [41-40011](#) [42-01015](#) [4-22279-4](#) [4-22281-1](#) [4-22284-9](#) [43-00113](#) [43-](#)
[01088](#) [43-01203](#) [41-40013](#) [42-00008](#) [43-00343](#) [43-01032](#) [43-01162](#) [43-10000](#) [600X518050X](#) [SACC-DSI-FS-5P-PG9-L180 SC](#)
[8R5006A16M020](#) [8R5006A16M005](#) [8R4000A16M010](#) [6-22279-3](#) [1605332](#) [N03FA03144](#) [1300140077](#) [43-01338](#) [XS2RD4265](#) [RSC 4/9](#)
[XS2R-D426-1](#) [XS8A-0441](#)