

Dwg No C-6-1579008-3

THIS DRAWING IS A CONTROLLED DOCUMENT FOR AMP INCORPORATED. IT IS SUBJECT TO CHANGE AND THE CONTROLLING ENGINEERING ORGANIZATION SHOULD BE CONTACTED FOR THE LATEST REVISION.

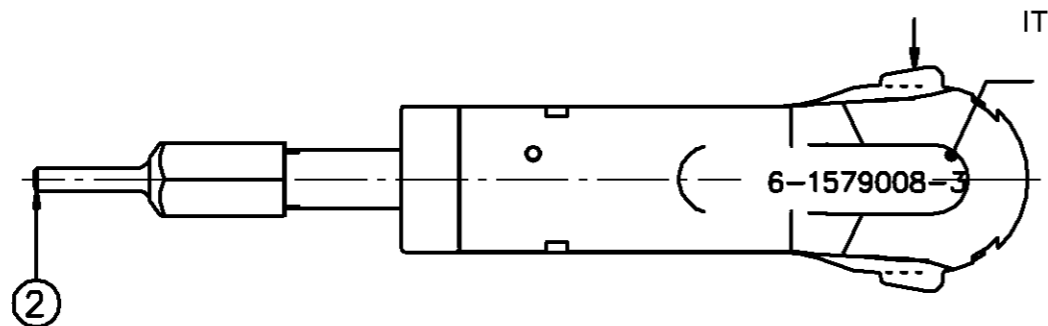
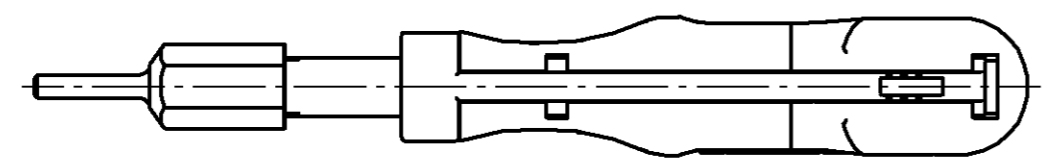
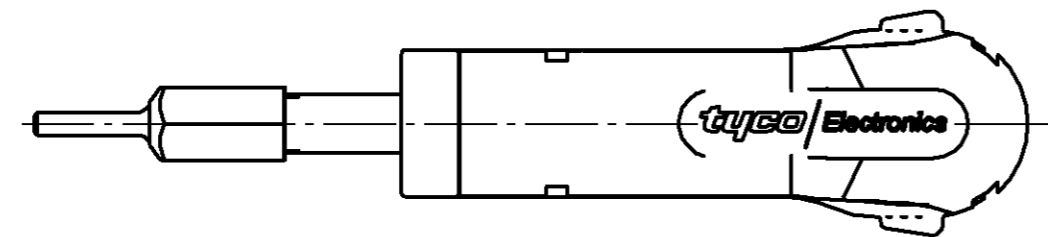
DIESES ZEICHNUNGSDOKUMENT WIRD DURCH AMP INCORPORATED KONTROLLIERT. AENDERUNGEN, DIE DEM TECHNISCHEN FORTSCHRITT DIENEN, SIND VORBEHALTEN. DEN JEWEILS LETZTQUELTLICHEN AENDERUNGSSTAND ERFAHREN SIE AUF ANFRAGE.

THIS INFORMATION IS CONFIDENTIAL AND IS DISCLOSED TO YOU ON CONDITION THAT NO FURTHER DISCLOSURE IS MADE BY YOU TO OTHER THAN AMP PERSONNEL WITHOUT WRITTEN AUTHORIZATION FROM AMP INCORPORATED. D - 64625 BENSHEIM

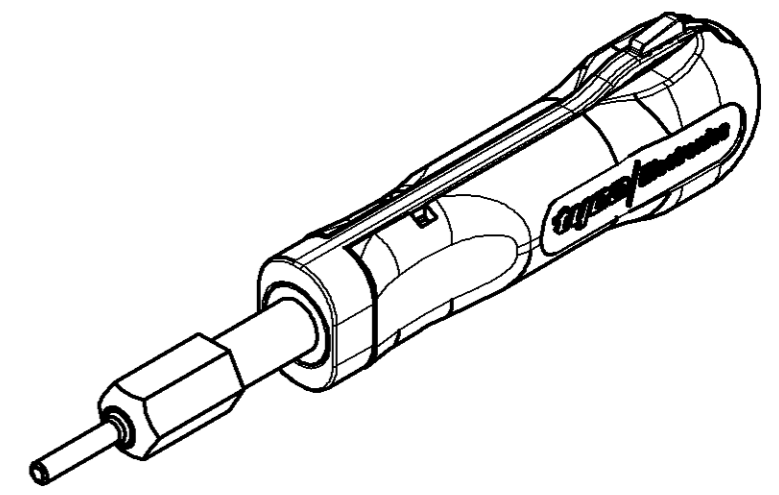
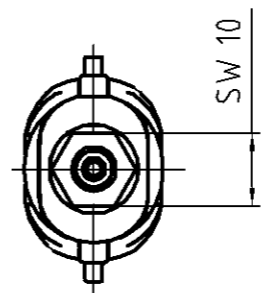
PASSMASS	ABMASS

PROJECT NO.: USED ON:

Pos.#	Titel	PN	Material	Surface	Heat Treat.	Qty
2	Dism. sleeve	6-1579008-5	Springsteel	Nickel-pl.		1



ITEM NUMBER



FOR CONTACTS / HOUSINGS:

HDR Contact: 203816, 166046, 203816, 203874, 166047, 203874

FREIEMASSSTOLERANZEN NACH DIN 7168 (WERTE IN MM)
 1) ABWEICHEND VON DIN 7168 2) LANGE DES KURZEREN SCHENKELS

NENNMASS- BEREICH 1)	UBER BIS	0,5 3	3 6	6 30	30 120	120 400	400 1000
LANGEN- MASSE	FEIN MITTEL	±0,05 ±0,1	±0,05 ±0,1	±0,1 ±0,2	±0,15 ±0,3	±0,2 ±0,5	±0,3 ±0,8
RADIEN U. FASEN		±0,2	±0,5	±1	±2	±4	±4
WINKELABMASSE 1) 2)		±1°	±1°	±30'	±20'	±10'	±5'

GENERAL TOLERANCES ACC. TO DIN 7168 (VALUES IN MM)
 1) DEVIATING FROM DIN 7168 2) LENGTH OF SHORT ANGLE SIDE

TEIL IM BEREICH X... MIT PN/STRICH-NR. (-1 WIE GEZ.),
 REVISION-STAND UND LIEFERANTENSYMBOL GEMEINZEICHNET

PART TO BE MARKED WITH PN, DASH NO. (-1 AS SHOWN),
 REV. STATUS AND VENDORS MARK IN AREA X...

DIN 3141 R3	BOHR- DIAE ANGABE	A	ECN EGC0-0000-00	00.00.2000	-	-
12.5/						

LOC	AI	DIST	REVISION RECORD	DATE	DWN	APVD

FINISH	DWN 16.03.2007	MATERIAL 1.2242	HEAT TREAT
DIMENSIONS: mm	h. fink 19.03.2007	59CrV4	Gewicht / Weight 0,000kg
TOLERANCES UNLESS OTHERWISE SPECIFIED	G. Stegmayer	tyco Electronics	tyco Electronics AMP GmbH D - 64625 Bensheim
0 PLC 1 PLC 2 PLC 3 PLC 4 PLC	APVD 19.03.2007	G. Stegmayer	
ANGLES	NAME EXTRACTION TOOL Entriegelungswerkzeug		
SURFACE TEXTURE	SCALE 1:1	SIZE A3	DRAWING NO C-6-1579008-3

X-ON Electronics

Largest Supplier of Electrical and Electronic Components

Click to view similar products for [Hand Tools](#) category:

Click to view products by [TE Connectivity](#) manufacturer:

Other Similar products are found below :

[568681-1](#) [576786-2](#) [58061-1](#) [58176-1](#) [58177-1](#) [58177-2](#) [58284-1](#) [59085](#) [0031](#) [59737-5](#) [015-0339-000](#) [015-8755-001](#) [600-146-06](#) [M15570-25](#) [62200-5709](#) [6-304052-1](#) [63443-1002](#) [63443-3513](#) [63443-4025](#) [63443-7114](#) [6-354778-5](#) [6-354779-2](#) [63600-2995](#) [63810-0105](#) [M8196914-08](#) [662508-1](#) [662908-1](#) [679994-1](#) [679994-2](#) [68764-0001](#) [69001-0105](#) [69002-5525](#) [690124-7](#) [690191-1](#) [690191-4](#) [690518-2](#) [690696-1](#) [691409-4](#) [691667-1](#) [692006-2](#) [692655-7](#) [692776-1](#) [692776-4](#) [693077-3](#) [693077-4](#) [693597-1](#) [ESR-17x17](#) [ET-LY10](#) [734041-1](#) [734176-1](#)