

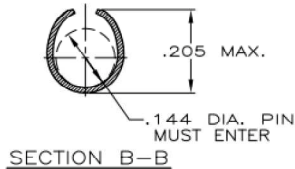
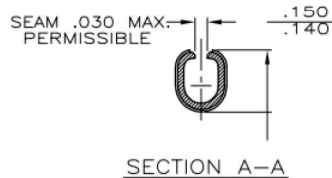
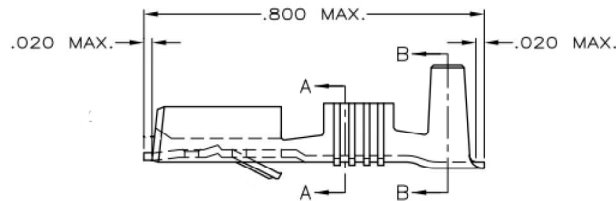
DO NOT SCALE
DIMENSIONS IN mm

METRIC



NOTES:

1. PLATING: SILVER, THICKNESS 0.000150 MIN
2. PLATING: ELECTRO TIN, THICKNESS 0.000040 MIN
3. PLATING: SILVER, THICKNESS 0.000120 MIN
4. PLATING: SILVER, THICKNESS 0.000100 MIN
5. PLATING: PRE TIN



WIRE RANGE :
1.0-2.5 mm²
INSULATION RANGE :
.120-.160 INCH

| | | | |
|------------|------|-----------|------------|
| | 5 | BRASS | 6-160449-7 |
| | 3 | BRASS | 6-160449-6 |
| | 2 | BRASS | 6-160449-5 |
| | 1 | PH.BRONZE | 6-160449-3 |
| | 2 | PH.BRONZE | 6-160449-2 |
| | NONE | PH.BRONZE | 6-160449-1 |
| | NONE | BRASS | 6-160449-0 |
| 6-160449-6 | 3 | BRASS | 1-160449-3 |
| 6-160449-5 | 2 | BRASS | 1-160449-2 |
| 6-160449-3 | 1 | PH.BRONZE | 1-160449-1 |
| 6-160449-2 | 2 | PH.BRONZE | 1-160449-0 |
| 6-160449-1 | NONE | PH.BRONZE | 160449-9 |
| 6-160449-0 | NONE | BRASS | 160449-8 |
| INACTIVE | 4 | BRASS | 160449-7 |
| 6-160449-6 | 3 | BRASS | 160449-6 |
| 6-160449-5 | 2 | BRASS | 160449-5 |
| 6-160449-0 | NONE | BRASS | 160449-4 |
| 6-160449-3 | 1 | PH.BRONZE | 160449-3 |
| 6-160449-2 | 2 | PH.BRONZE | 160449-2 |
| 6-160449-1 | NONE | PH.BRONZE | 160449-1 |

SUPERSEDED BY FINISH MATERIAL PARTNUMBER

CUSTOMER DRAWING FOR REFERENCE ONLY WILL NOT BE UPDATED

THIS DRAWING IS UNPUBLISHED
RELEASED FOR PUBLICATION



TE Connectivity

NAME
.250 SRS FASTIN-ON RECEPTACLE.

| | | | | |
|-------|----------------------------|-------|-----------|-----------|
| A3 | views corrected as per PD: | GG | DT | 19DEC16 |
| LTR. | REVISION RECORD | DR. | CHK. | DATE |
| DR.: | D. KESSLER | CHK.: | P. BELNON | APP.: |
| DATE: | 19 JAN 95 | DATE: | - | L.V.SOEST |
| DATE: | - | DATE: | - | |

| | | |
|----------|-----------|--------|
| DWG. No. | REV. LTR. | SHEET |
| 160449 | R A3 | 1 of 1 |

X-ON Electronics

Largest Supplier of Electrical and Electronic Components

Click to view similar products for [Terminals](#) category:

Click to view products by [TE Connectivity](#) manufacturer:

Other Similar products are found below :

[00-054007-01074-6](#) [00-054007-70206-1](#) [00-054007-70210-8](#) [00-054007-70217-7](#) [00-054007-70226-9](#) [00-054007-70228-3](#) [00-054007-70248-1](#) [00-054007-70256-6](#) [00-054007-70301-3](#) [00-054007-70316-7](#) [00-054007-49560-4](#) [00-054007-70209-2](#) [00-054007-70225-2](#) [00-054007-70227-6](#) [00-054007-70231-3](#) [00-054007-70241-2](#) [00-054007-70242-9](#) [00-054007-70244-3](#) [00-054007-70246-7](#) [00-054007-70263-4](#) [00-054007-70288-7](#) [00-054007-70290-0](#) [00-054007-70300-6](#) [00-054007-70304-4](#) [01-2065-1-0216](#) [01-2900-1-04412](#) [00581P0075](#) [600TS-10](#) [60205-1](#) [604200-1](#) [605601-1](#) [60598-1-CUT-TAPE](#) [61314-6-C](#) [61810-3](#) [61-S](#) [61-SN](#) [626-0194](#) [62-NBM-A](#) [62-SN](#) [62-SP](#) [63-S](#) [640179-1](#) [M55155/059I03](#) [M55155/079C01](#) [M55155/099H02](#) [M55155/109H01](#) [M55155/109H02](#) [M55155/12XH05](#) [M55155/16XH02](#) [M55155/29-5S](#)