

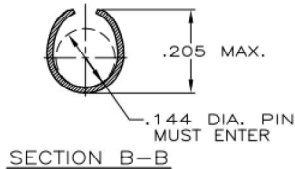
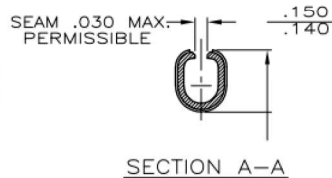
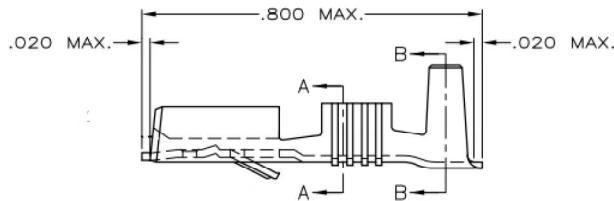
DO NOT SCALE  
DIMENSIONS IN mm

METRIC



NOTES:

1. PLATING: SILVER, THICKNESS 0.000150 MIN
2. PLATING: ELECTRO TIN, THICKNESS 0.000040 MIN
3. PLATING: SILVER, THICKNESS 0.000120 MIN
4. PLATING: SILVER, THICKNESS 0.000100 MIN
5. PLATING: PRE TIN



WIRE RANGE :  
1.0-2.5 mm<sup>2</sup>  
INSULATION RANGE :  
.120-.160 INCH

	5	BRASS	6-160449-7
	3	BRASS	6-160449-6
	2	BRASS	6-160449-5
	1	PH.BRONZE	6-160449-3
	2	PH.BRONZE	6-160449-2
	NONE	PH.BRONZE	6-160449-1
	NONE	BRASS	6-160449-0
6-160449-6	3	BRASS	1-160449-3
6-160449-5	2	BRASS	1-160449-2
6-160449-3	1	PH.BRONZE	1-160449-1
6-160449-2	2	PH.BRONZE	1-160449-0
6-160449-1	NONE	PH.BRONZE	160449-9
6-160449-0	NONE	BRASS	160449-8
INACTIVE	4	BRASS	160449-7
6-160449-6	3	BRASS	160449-6
6-160449-5	2	BRASS	160449-5
6-160449-0	NONE	BRASS	160449-4
6-160449-3	1	PH.BRONZE	160449-3
6-160449-2	2	PH.BRONZE	160449-2
6-160449-1	NONE	PH.BRONZE	160449-1

SUPERSEDED BY FINISH MATERIAL PARTNUMBER

CUSTOMER DRAWING FOR REFERENCE ONLY WILL NOT BE UPDATED

THIS DRAWING IS UNPUBLISHED  
RELEASED FOR PUBLICATION



NAME  
.250 SRS FAST-IN-ON RECEPTACLE.

A3	views corrected as per PD.	GG	DT	19DEC16
LTR.	REVISION RECORD	DR.	CHK.	DATE
DR.:	D. KESSLER	CHK.:	P. BELNON	APP.:
DATE:	19 JAN 95	DATE:	-	L.V.SOEST
DATE:	-	DATE:	-	

DWG. No.	REV. LTR.	SHEET
160449	R A3	1 of 1

## X-ON Electronics

Largest Supplier of Electrical and Electronic Components

*Click to view similar products for [Terminals](#) category:*

*Click to view products by [TE Connectivity](#) manufacturer:*

Other Similar products are found below :

[00-054007-01074-6](#) [00-054007-70206-1](#) [00-054007-70210-8](#) [00-054007-70217-7](#) [00-054007-70226-9](#) [00-054007-70228-3](#) [00-054007-70248-1](#) [00-054007-70256-6](#) [00-054007-70301-3](#) [00-054007-70316-7](#) [00-054007-49560-4](#) [00-054007-70209-2](#) [00-054007-70225-2](#) [00-054007-70227-6](#) [00-054007-70231-3](#) [00-054007-70241-2](#) [00-054007-70242-9](#) [00-054007-70244-3](#) [00-054007-70246-7](#) [00-054007-70263-4](#) [00-054007-70288-7](#) [00-054007-70290-0](#) [00-054007-70300-6](#) [00-054007-70304-4](#) [01-2065-1-0216](#) [01-2900-1-04412](#) [00581P0075](#) [600TS-10](#) [60205-1](#) [604200-1](#) [605601-1](#) [60598-1-CUT-TAPE](#) [61314-6-C](#) [61810-3](#) [61-S](#) [61-SN](#) [626-0194](#) [62-NBM-A](#) [62-SN](#) [62-SP](#) [63-S](#) [640179-1](#) [M55155/059I03](#) [M55155/079C01](#) [M55155/099H02](#) [M55155/109H01](#) [M55155/109H02](#) [M55155/12XH05](#) [M55155/16XH02](#) [M55155/29-5S](#)