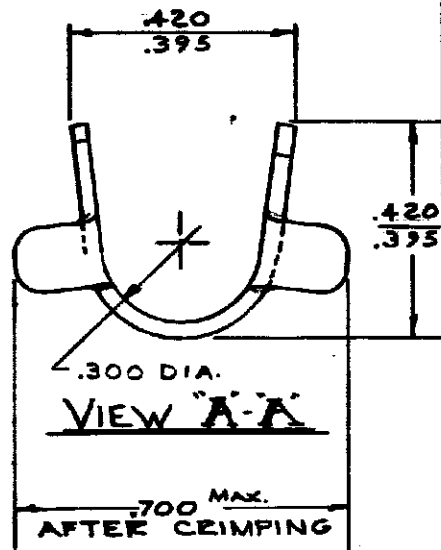
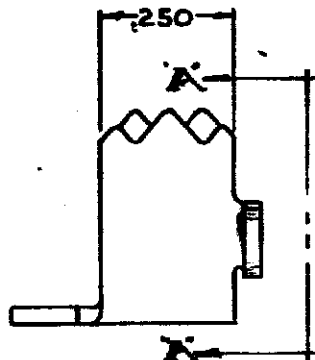
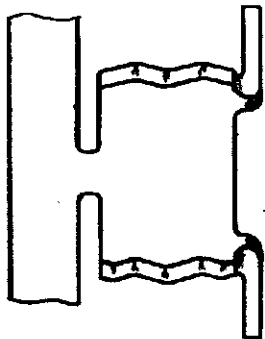


DRAWING MADE IN AMERICAN PROJECTION

61987
 UNPUBLISHED COPY NOT TO BE REPRODUCED OR PUBLISHED WITHOUT WRITTEN PERMISSION OF AMP INCORPORATED



DIMENSIONS STRIP ON REELS

PART NUMBER	REELING
61987-1	STANDARD
61987-2	REVERSE

DIMENSIONS IN INCHES. DO NOT SCALE PRINT.

E OBS. -2 AF 02/23/68				© 1977 BY AMP INCORPORATED. ALL RIGHTS RESERVED. AMP PRODUCTS COVERED BY PATENTS AND/OR PATENTS PENDING.		CUSTOMER COPY REFERENCE ONLY	
D ADDED 61987-2 7/16/68				MATERIAL AND FINISH 028 STEEL TIN		AMP INCORPORATED HARTFORD, CONNECTICUT	
C REVISED 6/17/68				WIRE - RANGE - INSULATION TYPE 1.345 DIA.		CLASS	
B RELEASED 1/23/68				TOLERANCE EXCEPT AS NOTED ± .015 ± .10		USE NO 61987 REV E	
A REVISED 5/26/68				NAME STRAIN RELIEF WING TYPE		DATE 5-26-68 BY 8.0LSSON	

X-ON Electronics

Largest Supplier of Electrical and Electronic Components

Click to view similar products for [Terminals](#) category:

Click to view products by [TE Connectivity](#) manufacturer:

Other Similar products are found below :

[00-054007-01074-6](#) [00-054007-70206-1](#) [00-054007-70210-8](#) [00-054007-70217-7](#) [00-054007-70226-9](#) [00-054007-70228-3](#) [00-054007-70248-1](#) [00-054007-70256-6](#) [00-054007-70301-3](#) [00-054007-70316-7](#) [0-0320562-0](#) [00-054007-49560-4](#) [00-054007-70209-2](#) [00-054007-70225-2](#) [00-054007-70227-6](#) [00-054007-70231-3](#) [00-054007-70241-2](#) [00-054007-70242-9](#) [00-054007-70244-3](#) [00-054007-70246-7](#) [00-054007-70263-4](#) [00-054007-70288-7](#) [00-054007-70290-0](#) [00-054007-70300-6](#) [00-054007-70304-4](#) [01-2065-1-0216](#) [01-2900-1-04412](#) [00581P0075](#) [600TS-10](#) [60205-1](#) [604200-1](#) [605601-1](#) [60598-1-CUT-TAPE](#) [61314-6-C](#) [61810-3](#) [61-S](#) [61-SN](#) [626-0194](#) [62-NBM-A](#) [62-SN](#) [62-SP](#) [63-S](#) [640179-1](#) [M55155/059I03](#) [M55155/079C01](#) [M55155/099H02](#) [M55155/109H01](#) [M55155/109H02](#) [M55155/12XH05](#) [M55155/16XH02](#)