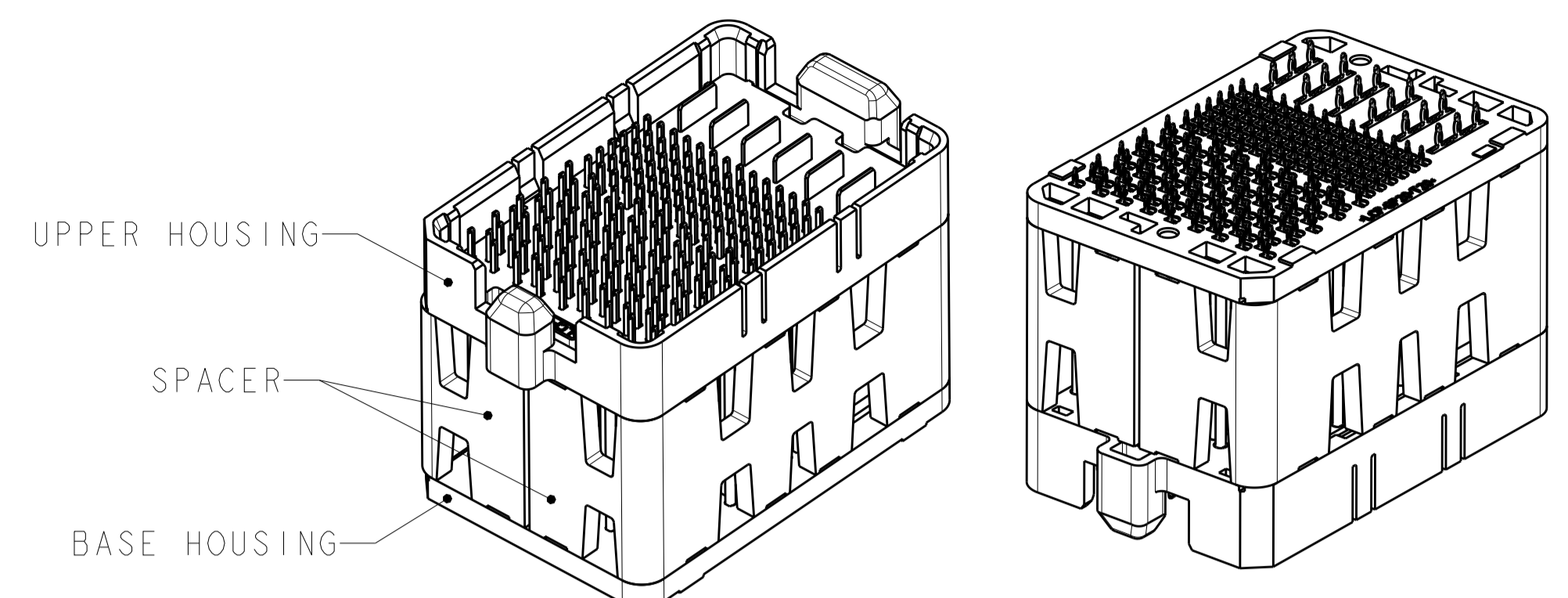
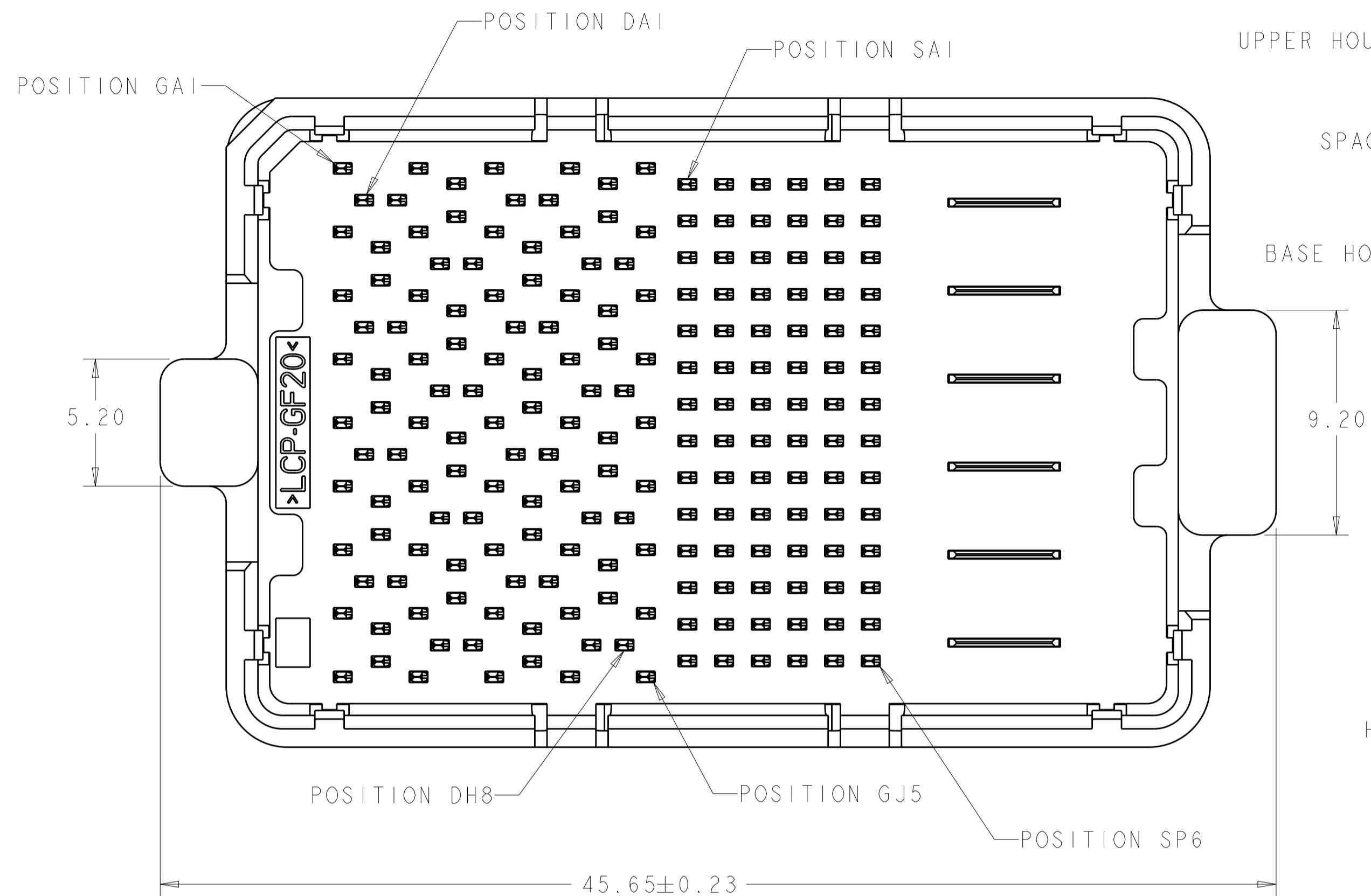
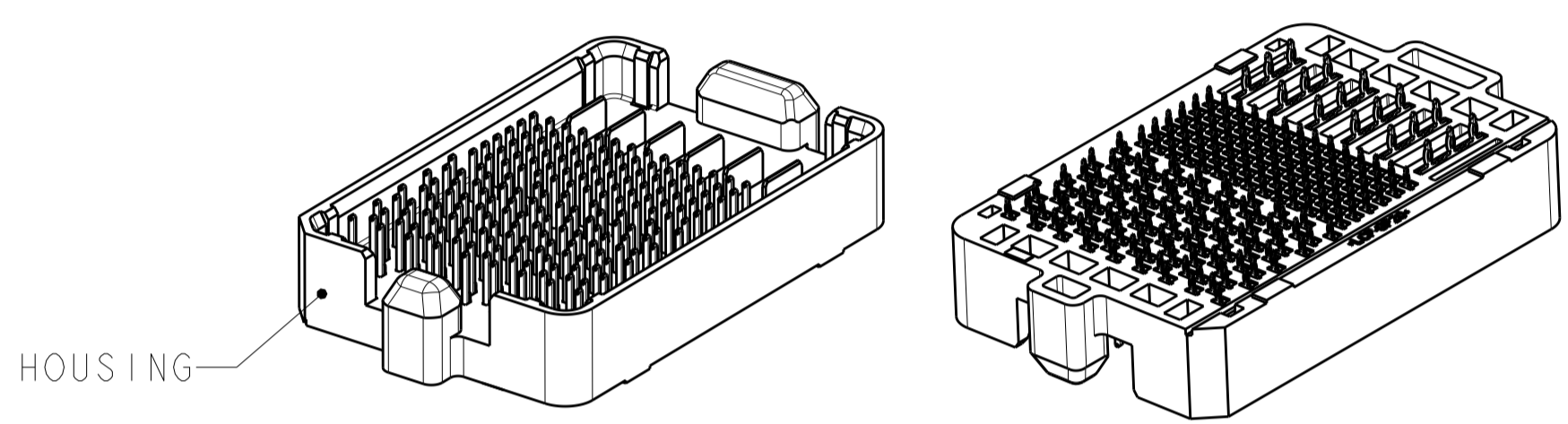


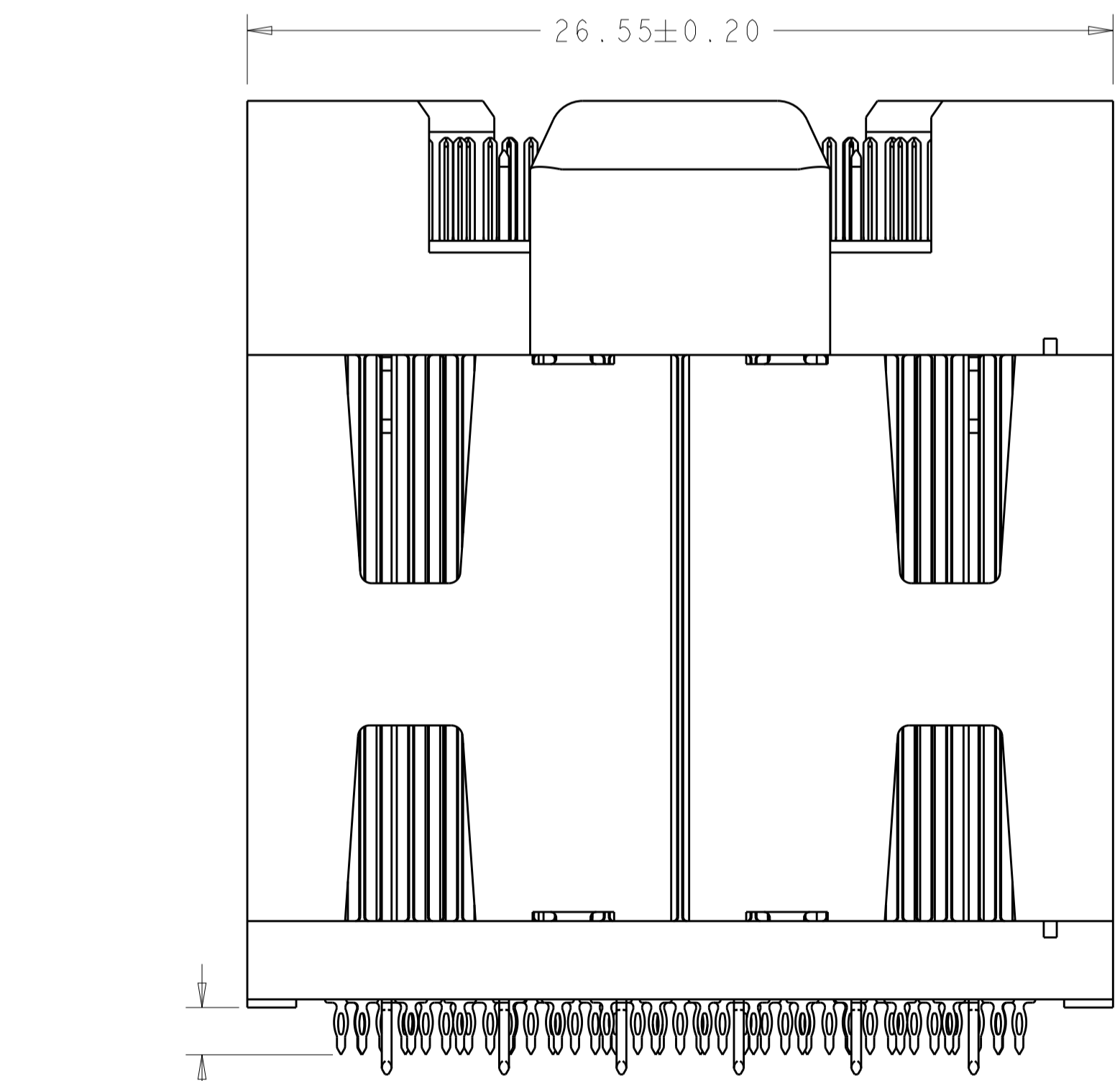
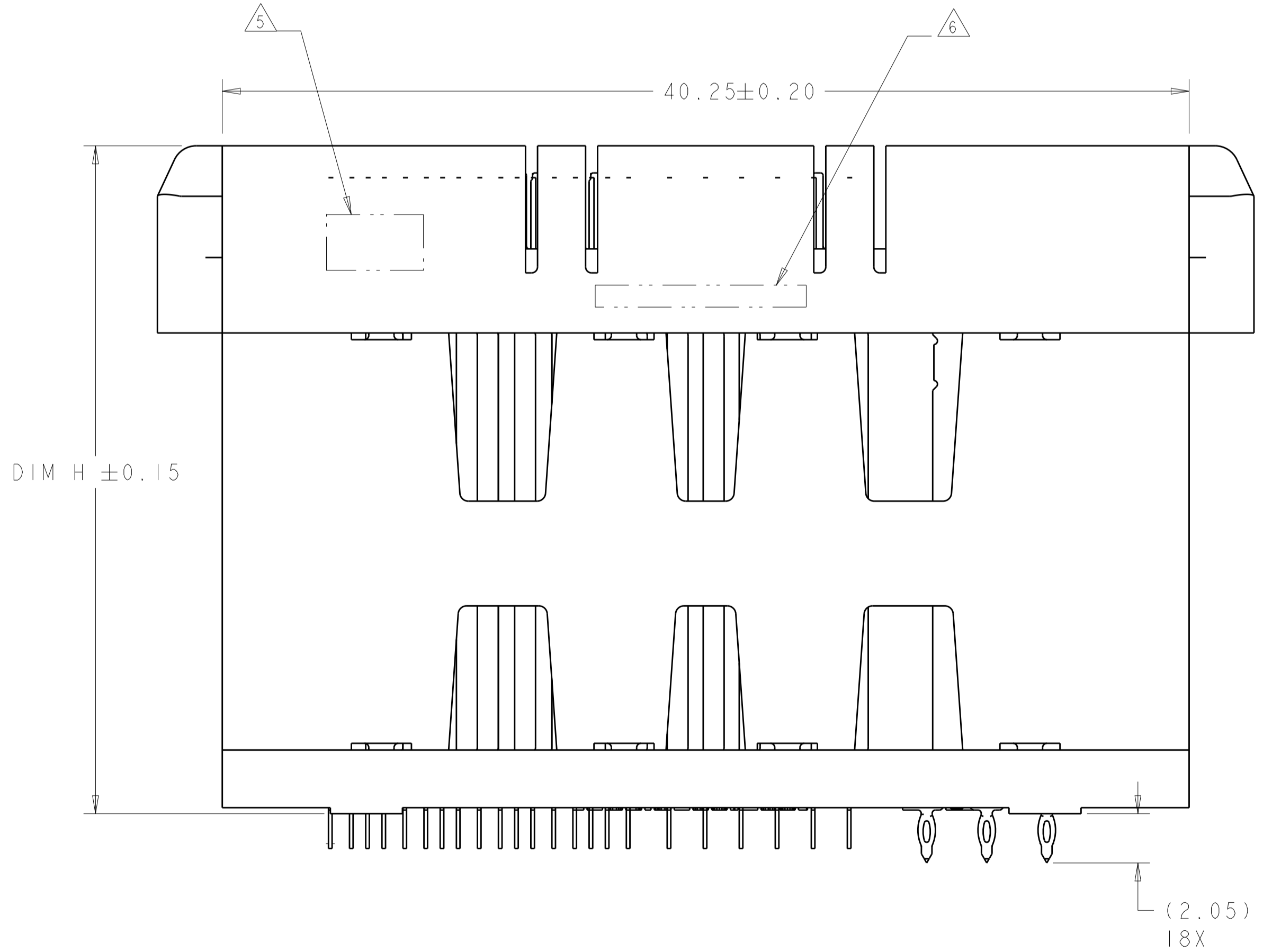
| LOC | DIST | REVISIONS |     |                  |           |     |      |
|-----|------|-----------|-----|------------------|-----------|-----|------|
|     |      | P         | LTN | DESCRIPTION      | DATE      | OWN | APVD |
| AD  | 00   | A         |     | INITIAL REVISION | 13MAR2013 | -   | -    |



ISOMETRIC VIEW  
TYPICAL CONFIGURATION FOR 14mm THRU 42mm  
28mm SHOWN  
SCALE 2:1



ISOMETRIC VIEW  
TYPICAL CONFIGURATION FOR 8mm THRU 13mm  
8mm SHOWN  
SCALE 2:1



(1.45)  
193X

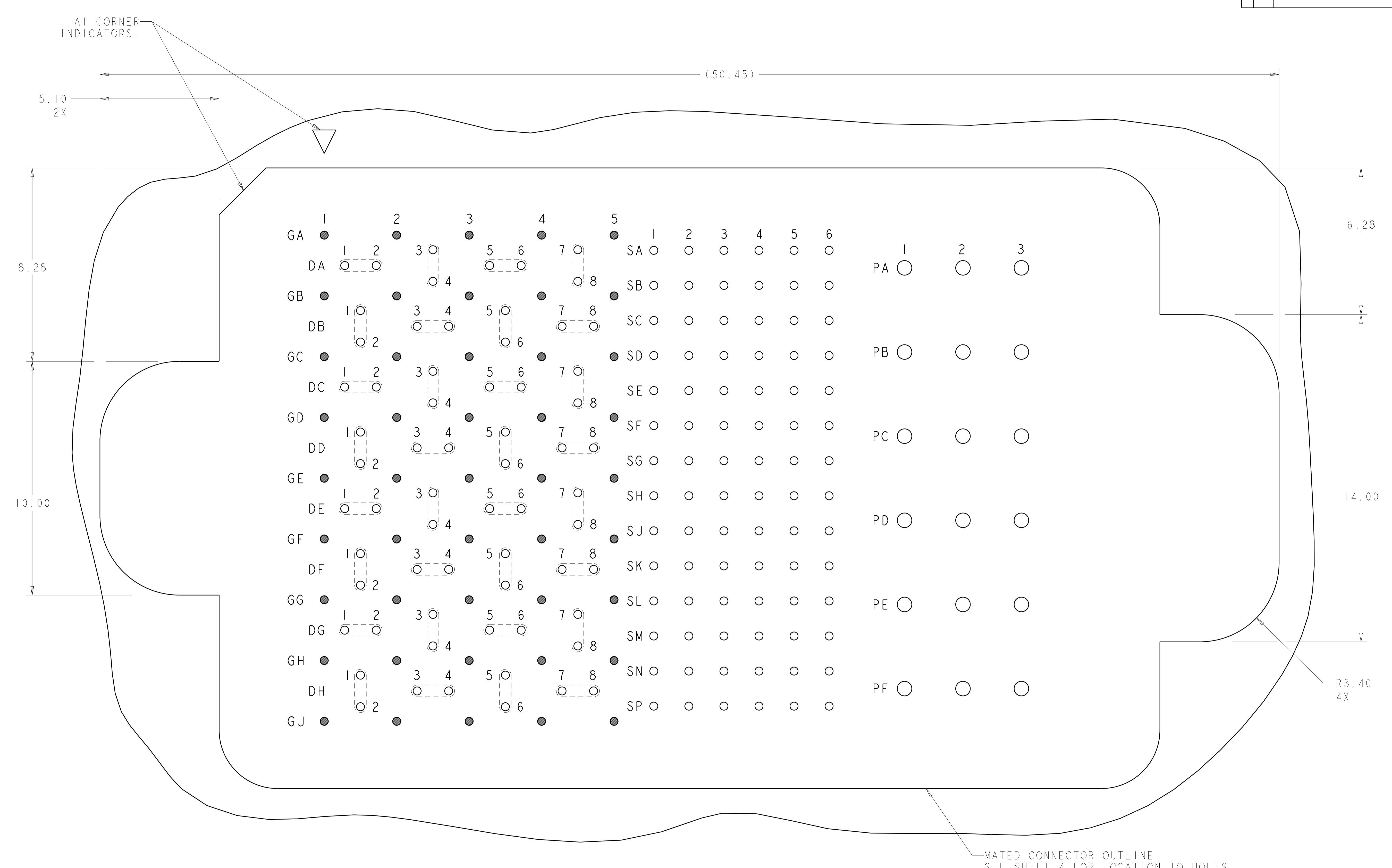
- 1 MATERIAL:  
BASE HOUSING, UPPER HOUSING, ORGANIZER,  
AND SPACER: THERMOPLASTIC, FLAMMABILITY  
RATING UL94-V0  
CONTACT: COPPER ALLOY
- 2. CONFORMS TO THE REQUIREMENTS OF TE PRODUCT  
SPECIFICATION, 108-2375; BASED ON TELCORDIA  
GR-1217-CORE FOR SYSTEM QUALITY LEVEL III,  
APPLICATIONS IN CONTROLLED ENVIRONMENTS  
(CENTRAL OFFICE).  
SEE TE PRODUCT SPECIFICATION 108-2375 FOR  
TEST SEQUENCES.
- 3 ROWS GA THRU GJ (SHOWN DARKENED) ARE TYPICALLY  
USED AS GROUNDS.
- 4 SPECIFIED POSITIONAL TOLERANCE DEFINES HOLE TO  
HOLE LOCATION WITHIN HOLE PATTERN. POSITIONAL  
TOLERANCE OF HOLE PATTERN TO FIDUCIAL MARKS  
OR PCB DATUMS SHALL BE DEFINED BY CUSTOMER.
- 5 AREA RESERVED FOR TE CONNECTIVITY LOGO.
- 6 AREA RESERVED FOR PART NUMBER (X-XXXXXXX-X)  
AND DATE CODE (YYWW).
- 7 USE CENTERLINES INDICATED ON PCB HOLE PATTERN  
TO ESTABLISH ALIGNMENT BETWEEN HEADER AND  
RECEPTACLE BOARDS.
- 8 PLATED THROUGH HOLE REQUIREMENTS - SIGNAL:  
HOLE SIZE PRIOR TO PLATING =  $\varnothing 0.420 \pm 0.013$   
COPPER PLATING THICKNESS =  $0.038 \pm 0.013$   
CALCULATED FINISHED HOLE SIZE =  $\varnothing 0.344 \pm 0.039$   
THESE DIMENSIONS APPLY TO THE TOP 1.25mm OF  
THE PCB THICKNESS FROM THE CONNECTOR MOUNTING  
SIDE.
- 9 PLATED THROUGH HOLE REQUIREMENTS - POWER:  
HOLE SIZE PRIOR TO PLATING =  $\varnothing 0.700 \pm 0.025$   
COPPER PLATING THICKNESS =  $0.038 \pm 0.013$   
CALCULATED FINISHED HOLE SIZE =  $\varnothing 0.624 \pm 0.051$   
THESE DIMENSIONS APPLY TO THE TOP 1.50mm OF  
THE PCB THICKNESS FROM THE CONNECTOR MOUNTING  
SIDE.

**SIZE 2 HOUSING W/ GUIDE POSTS**  
**32 DIFFERENTIAL PAIRS**  
**84 HIGH-DENSITY GRID**  
**193 TOTAL SIGNAL CONTACTS**  
**6 POWER CONTACTS**

|       |              |                      |             |
|-------|--------------|----------------------|-------------|
| 10.8  | 11mm         | MATTE Sn             | 6-2227706-1 |
| DIM H | STACK HEIGHT | CONTACT TAIL PLATING | PART NUMBER |

|  |   |   |                        |  |                       |
|--|---|---|------------------------|--|-----------------------|
| THIS DRAWING IS A CONTROLLED DOCUMENT. |   | OWN: M. HORNUNG<br>CHK: M. HORNUNG<br>APVD: - | TIMAR2013<br>TIMAR2013 | TE Connectivity  |                       |
| DIMENSIONS:                            | TOLERANCES UNLESS OTHERWISE SPECIFIED:                        | PRODUCT SPEC                                  |                        | NAME   |                       |
| mm                                     | 0 PLC ±<br>2 PLC ±0.13<br>3 PLC ±0.013<br>4 PLC ±<br>ANGLES ± | APPLICATION SPEC                              |                        | HEADER ASSEMBLY<br>32/84/6P<br>STRADA MESA MEZZANINE CONNECTOR |                       |
| MATERIAL:                              | FINISH:   | SIZE: 114-13249                               | WEIGHT:                | CAGE CODE: A100779   | DRAWING NO: C=2227706 |
|  |   | Customer Drawing                              |                        | SCALE: 2:1   | SHEET 1 OF 3 REV A    |

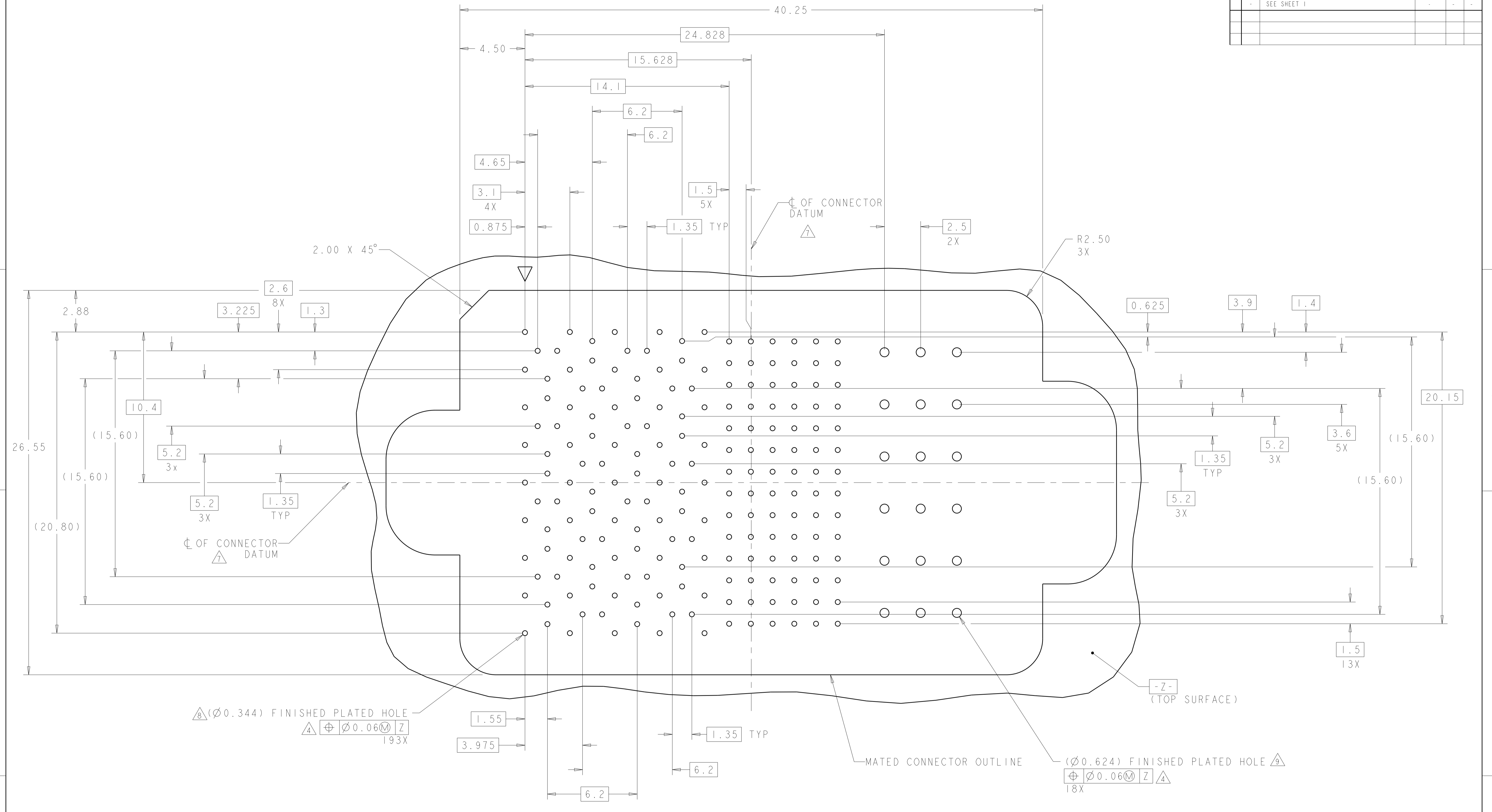
| LOC | DIST | REVISIONS   |      |     |      |
|-----|------|-------------|------|-----|------|
| P   | LTN  | DESCRIPTION | DATE | DWN | APVD |
| -   | -    | SEE SHEET 1 | -    | -   | -    |
|     |      |             |      |     |      |
|     |      |             |      |     |      |



**PCB LAYOUT AND PIN IDENTIFICATION**   
 SHOWN FROM CONNECTOR SIDE  
 SCALE 12:1

|  |  |                                |                                 |
|--|--|--------------------------------|---------------------------------|
| THIS DRAWING IS A CONTROLLED DOCUMENT. |  | DWN<br>M. HORNUNG<br>TIMAR2013 | TE Connectivity                 |
| DIMENSIONS:                            |  | CHK<br>M. HORNUNG<br>TIMAR2013 |                                 |
| mm                                     | TOLERANCES UNLESS OTHERWISE SPECIFIED: | APVD                           | NAME                            |
| 0 PLC ±                                | 1 PLC ±0.13                            | PRODUCT SPEC                   | HEADER ASSEMBLY                 |
| 2 PLC ±0.13                            | 3 PLC ±0.013                           | APPLICATION SPEC               | 32784/6P                        |
| 4 PLC ±                                | ANGLES ±1                              | SIZE                           | STRADA MESA MEZZANINE CONNECTOR |
| MATERIAL                               | FINISH                                 | 114-13249                      | RESTRICTED TO                   |
|  |  | WEIGHT                         | A100779C=2227706                |
|  |  | Customer Drawing               | SCALE 2:1 SHEET 2 OF 3 REV A    |

| LOC |    | DIST |     | REVISIONS   |      |     |      |
|-----|----|------|-----|-------------|------|-----|------|
| AD  | 00 | P.   | LTH | DESCRIPTION | DATE | DWN | APVD |
|     |    | -    | -   | SEE SHEET 1 | -    | -   | -    |



**PCB HOLE PATTERN**  
 SHOWN FROM CONNECTOR SIDE  
 SCALE 8:1

△(∅0.344) FINISHED PLATED HOLE  
 4 ⊕ ∅0.06 (M) Z 193X

∅0.624) FINISHED PLATED HOLE  
 ⊕ ∅0.06 (M) Z 18X

|  |  |                                |                  |
|--|--|--------------------------------|------------------|
| THIS DRAWING IS A CONTROLLED DOCUMENT. |  | DWN<br>M. HORNUNG<br>TIMAR2013 | NAME             |
| DIMENSIONS:                            |  | CHK<br>M. HORNUNG<br>TIMAR2013 | PRODUCT SPEC     |
| mm                                     | TOLERANCES UNLESS OTHERWISE SPECIFIED: | APVD                           | APPLICATION SPEC |
|  | 0 PLC ±                                |                                | 114-13249        |
|  | 1 PLC ±0.13                            |                                | WEIGHT           |
|  | 2 PLC ±0.013                           |                                | Customer Drawing |
|  | 3 PLC ±                                |                                | SCALE 2:1        |
|  | 4 PLC ±                                |                                | SHEET 3 OF 3     |
|  | ANGLES ±1                              |                                | REV A            |
| MATERIAL                               | FINISH                                 | SIZE CAGE CODE DRAWING NO      | RESTRICTED TO    |
|  |  | A100779C=2227706               |                  |



TE Connectivity  
 NAME: HEADER ASSEMBLY  
 32784/6P  
 STRADA MESA MEZZANINE CONNECTOR

## X-ON Electronics

Largest Supplier of Electrical and Electronic Components

*Click to view similar products for [Circular Metric Connectors](#) category:*

*Click to view products by [TE Connectivity](#) manufacturer:*

Other Similar products are found below :

[600X518037X](#) [6STD15PCR99B70A](#) [8R4000A16M020](#) [8R5000A16M005](#) [1200910002](#) [1203580030](#) [1200910008](#) [1200910011](#) [1300140094](#)  
[130203-0054](#) [1300140026](#) [1300150099](#) [RF-12S1N8A90DU](#) [1612618](#) [21036836414](#) [8R4006A16M010](#) [1604232](#) [1R3006A20M005](#) [RF-](#)  
[12P1N8A80DU](#) [RF-12P1N8A90DU](#) [41-40011](#) [42-00006](#) [42-01015](#) [4-22279-4](#) [4-22281-1](#) [4-22284-9](#) [43-00113](#) [43-01088](#) [43-01203](#) [41-](#)  
[40013](#) [42-00008](#) [43-00343](#) [43-01026](#) [43-01032](#) [43-01162](#) [43-01173](#) [43-10000](#) [XS3P-M421-2](#) [600X518050X](#) [SACC-DSI-FS-5P-PG9-L180](#)  
[SC](#) [8R5006A16M020](#) [8R5006A16M005](#) [8R4000A16M010](#) [6-22279-3](#) [1605332](#) [N03FA03144](#) [1300140077](#) [43-16213](#) [43-01338](#)  
[XS2RD4265](#)