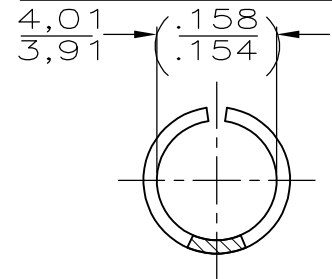
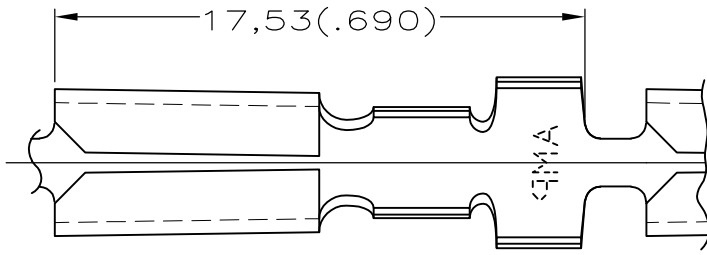
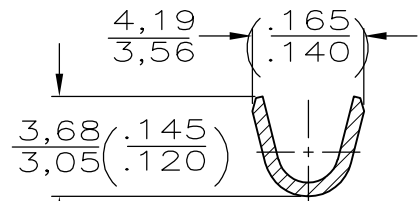
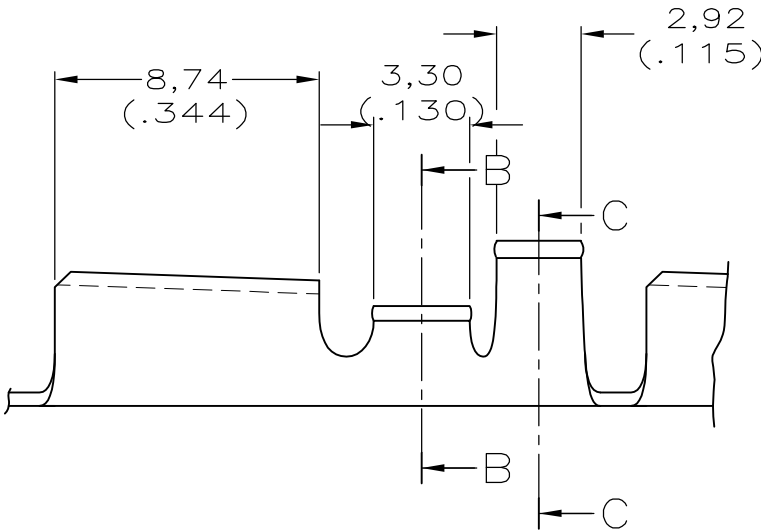


LOC	DIST	REVISIONS			DATE	DWN	APVD
—	—	P	LTR	DESCRIPTION			
		D2		REVISED PER ECO-15-005127	11MAY2015	NG	PS

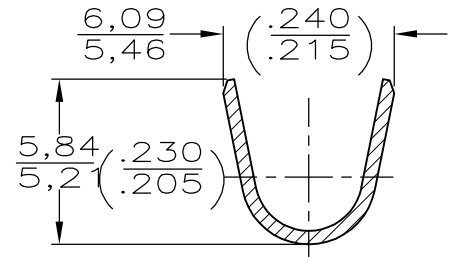
WIRE RANGE :
0,8–2,0mm² (18–14 AWG)
INSULATION RANGE :
3,30–4,45 DIA.
(.130–.175)



VIEW A-A



SECTION B-B



SECTION C-C

NOTES:

- 1 CONTINUOUS STRIP, ON REELS.
- 2 DIM'S IN BRACKETS ARE IN INCHES.

△ SPLICE-FREE.

OBSOLETE	TIN PLATED	0,46 (.018) THK. BRASS	-62734-4
OBSOLETE	SILVERPLATED	0,46 (.018) THK. BRASS	△ -62734-3
	SILVERPLATED	0,46 (.018) THK. BRASS	62734-2
	FINISH	MATERIAL	PARTNUMBER

RELEASED FOR PUBLICATION

ALL RIGHTS RESERVED.

THIS DRAWING IS UNPUBLISHED.

By -

© COPYRIGHT

DIMENSIONS: mm	DWN	R.DAAMEN	02-09-92	MATERIAL	-	FINISH	-
	CHK	R.DIJKSTRA	-				
TOLERANCES UNLESS OTHERWISE SPECIFIED:	APVD	L.v.SOEST	-				
0 PLC ± -	PRODUCT SPEC	-	-	NAME			
1 PLC ± -	APPLICATION SPEC	-	-	.156 DIA. PIN RECEPTACLE			
2 PLC ± -	WEIGHT	-	-	SIZE	A4	CAGE CODE	00779
3 PLC ± -				DRAWING NO	C-62734	RESTRICTED TO	
4 PLC ± -						-	
ANGLES ± -							
				CUSTOMER DRAWING	SCALE	1:1	SHEET 1 OF 1
							REV D2

X-ON Electronics

Largest Supplier of Electrical and Electronic Components

Click to view similar products for [Terminals](#) category:

Click to view products by [TE Connectivity](#) manufacturer:

Other Similar products are found below :

[00-054007-01074-6](#) [00-054007-70206-1](#) [00-054007-70210-8](#) [00-054007-70217-7](#) [00-054007-70226-9](#) [00-054007-70228-3](#) [00-054007-70248-1](#) [00-054007-70256-6](#) [00-054007-70301-3](#) [00-054007-70316-7](#) [00-054007-49560-4](#) [00-054007-70209-2](#) [00-054007-70225-2](#) [00-054007-70227-6](#) [00-054007-70231-3](#) [00-054007-70241-2](#) [00-054007-70242-9](#) [00-054007-70244-3](#) [00-054007-70246-7](#) [00-054007-70263-4](#) [00-054007-70288-7](#) [00-054007-70290-0](#) [00-054007-70300-6](#) [00-054007-70304-4](#) [01-2065-1-0216](#) [01-2900-1-04412](#) [00581P0075](#) [600TS-10](#) [60205-1](#) [604200-1](#) [605601-1](#) [60598-1-CUT-TAPE](#) [61314-6-C](#) [61810-3](#) [61-S](#) [61-SN](#) [626-0194](#) [62-NBM-A](#) [62-SN](#) [62-SP](#) [63-S](#) [640179-1](#) [M55155/059I03](#) [M55155/079C01](#) [M55155/099H02](#) [M55155/109H01](#) [M55155/109H02](#) [M55155/12XH05](#) [M55155/16XH02](#) [M55155/29-5S](#)