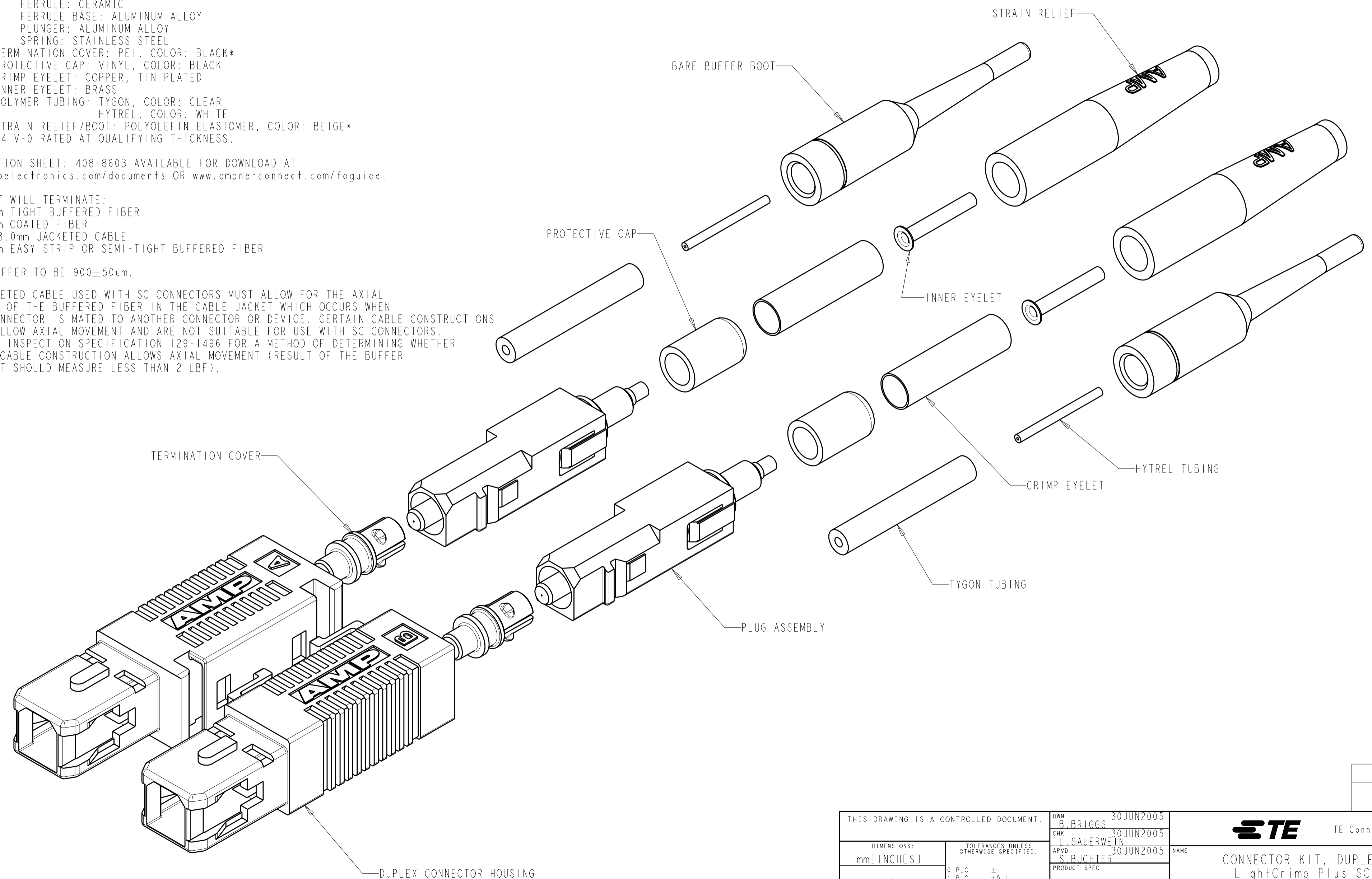


THIS DRAWING IS UNPUBLISHED. RELEASED FOR PUBLICATION 20
 © COPYRIGHT 20 ALL RIGHTS RESERVED.

LOC	DIST	REVISIONS			
P	LTR	DESCRIPTION	DATE	DWN	APVD
CE	00				
	D2	REVISED PER ECO-11-005139	27APR2011	RK	HMR

1. MATERIAL:
- CONNECTOR HOUSING: POLYESTER PBT, COLOR: BEIGE*
 - PLUG ASSEMBLY:
 - PLUG BODY: PAS, COLOR: BEIGE*
 - INTERNAL BODY: BRASS, NICKEL PLATED
 - INTERNAL COMPONENTS: PEI, COLOR: NATURAL
 - FERRULE: CERAMIC
 - FERRULE BASE: ALUMINUM ALLOY
 - PLUNGER: ALUMINUM ALLOY
 - SPRING: STAINLESS STEEL
 - TERMINATION COVER: PEI, COLOR: BLACK*
 - PROTECTIVE CAP: VINYL, COLOR: BLACK
 - CRIMP EYELET: COPPER, TIN PLATED
 - INNER EYELET: BRASS
 - POLYMER TUBING: TYGON, COLOR: CLEAR
HYTREL, COLOR: WHITE
 - STRAIN RELIEF/BOOT: POLYOLEFIN ELASTOMER, COLOR: BEIGE*
- *UL94 V-0 RATED AT QUALIFYING THICKNESS.

2. INSTRUCTION SHEET: 408-8603 AVAILABLE FOR DOWNLOAD AT
www.tycoelectronics.com/documents OR www.ampnetconnect.com/foguide.
3. THIS KIT WILL TERMINATE:
- 900um TIGHT BUFFERED FIBER
 - 250um COATED FIBER
 - 2.5-3.0mm JACKETED CABLE
 - 900um EASY STRIP OR SEMI-TIGHT BUFFERED FIBER
4. TIGHT BUFFER TO BE 900±50um.
5. ANY JACKETED CABLE USED WITH SC CONNECTORS MUST ALLOW FOR THE AXIAL MOVEMENT OF THE BUFFERED FIBER IN THE CABLE JACKET WHICH OCCURS WHEN AN SC CONNECTOR IS MATED TO ANOTHER CONNECTOR OR DEVICE. CERTAIN CABLE CONSTRUCTIONS DO NOT ALLOW AXIAL MOVEMENT AND ARE NOT SUITABLE FOR USE WITH SC CONNECTORS. REFER TO INSPECTION SPECIFICATION 129-1496 FOR A METHOD OF DETERMINING WHETHER A GIVEN CABLE CONSTRUCTION ALLOWS AXIAL MOVEMENT (RESULT OF THE BUFFER PULL TEST SHOULD MEASURE LESS THAN 2 LBF).



6278009-1
 PART NUMBER

THIS DRAWING IS A CONTROLLED DOCUMENT.		DWN B. BRIGGS 30 JUN 2005	 TE Connectivity	NAME CONNECTOR KIT, DUPLEX, LightCrimp Plus SC, 62.5/125um, MM		
DIMENSIONS: mm [INCHES]		CHK L. SAUERWEIN 30 JUN 2005		SIZE	CAGE CODE	DRAWING NO
TOLERANCES UNLESS OTHERWISE SPECIFIED:		APVD S. BUCHTER 30 JUN 2005		A2	00779	6278009
0 PLC ±- 1 PLC ±0.1 2 PLC ±0.02 3 PLC ±0.005 4 PLC ±0.0005 ANGLES ± FINISH		PRODUCT SPEC - APPLICATION SPEC - WEIGHT -		RESTRICTED TO -		
MATERIAL		CUSTOMER DRAWING		SCALE 4:1	SHEET 1 OF 1	

X-ON Electronics

Largest Supplier of Electrical and Electronic Components

Click to view similar products for [TE Connectivity](#) manufacturer:

Other Similar products are found below :

[D38999/24FJ4AN](#) [570416-000](#) [CLTEQ-M81CE-SSRELAY-4-20V](#) [4-1195131-0](#) [650069-000](#) [SMD100-2](#) [358838-000](#) [CB-1022B-78](#)
[RM707012](#) [RP410012](#) [MMS42](#) [1-640426-8](#) [2EDL4CM](#) [DTS20W19-11PD-3028-LC](#) [RM202615](#) [NC6-P104-06](#) [MSPS103B](#) [DTS26F21-](#)
[41HE-LC](#) [DTS26F21-41AE](#) [DTS26F21-41PE-LC](#) [DTS26F21-11SE-3028-LC](#) [30DCB6](#) [1932144-1](#) [293545-4](#) [LVR125S](#) [MS27466T25F4PB](#)
[CKB-38-78010](#) [TR04AI-TINELLOCKRING](#) [1206SFF150F/63-2](#) [D38999/20JB35HA](#) [TE1500A2R2J](#) [D38999/20WC8BB](#) [DTS24F19-11SC-](#)
[3028-LC](#) [D38999/24WG11HA](#) [D38999/24WG11HN](#) [MS27467T21F11H](#) [DJT16E21-11HA](#) [MS27467T21F35J](#) [MS27467T21F11J](#)
[MS27467T21F16H-LC](#) [MS27467T21F35H](#) [MS27467T21F41H-LC](#) [1206SFH150F/24-2](#) [RP330024](#) [DJT16E21-11PA-LC](#) [DJT16E21-11HA-](#)
[LC](#) [DJT16E21-11AA](#) [MS27467T21B11JA](#) [DJT16E21-11JA](#) [MS27467T21B11JA-LC](#)