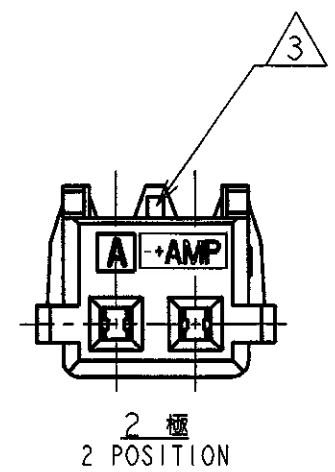
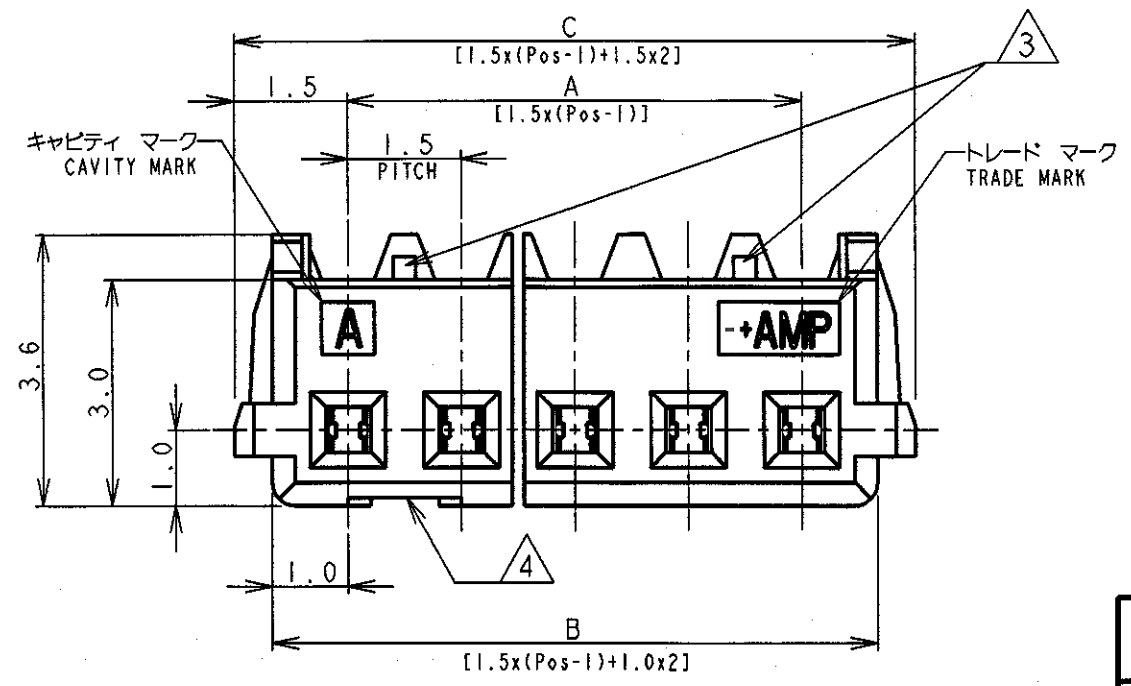
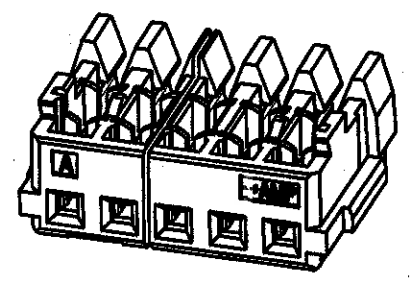
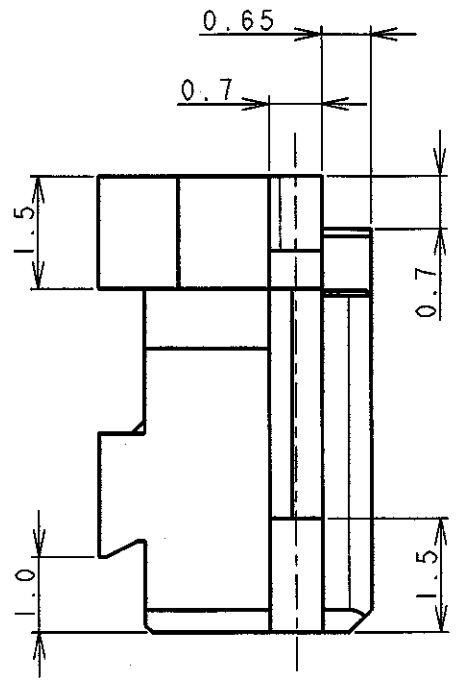
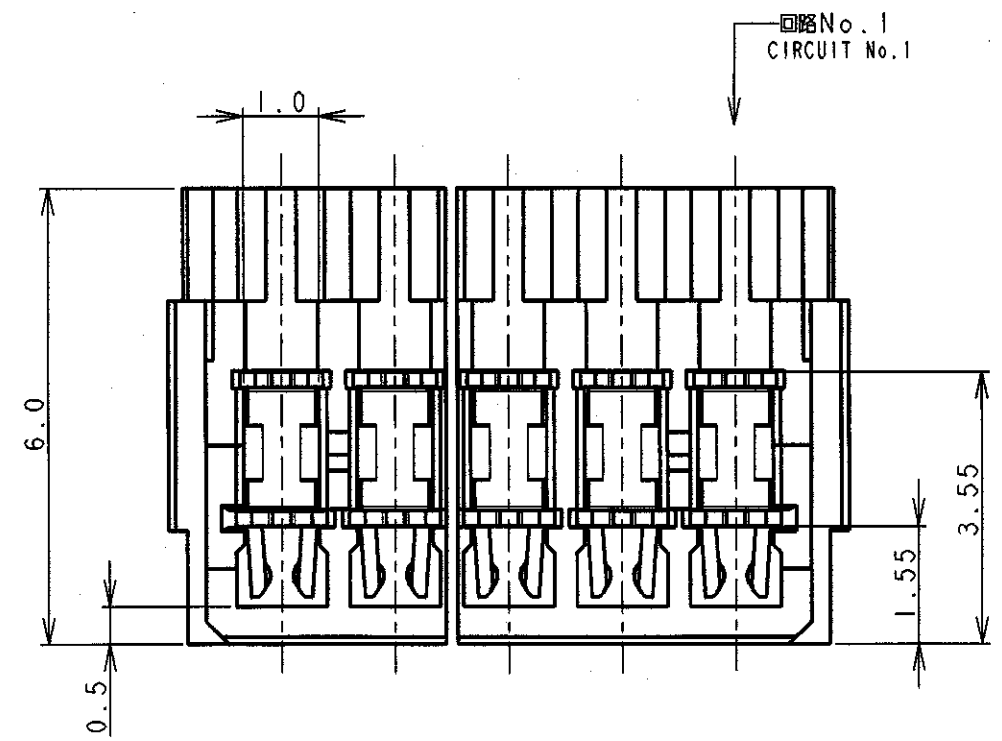


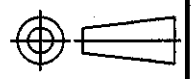

THIS DRAWING IS UNPUBLISHED. RELEASED FOR PUBLICATION
 (C) COPYRIGHT ALL RIGHTS RESERVED.

| LOC | | DIST | | REVISIONS | | | |
|-----|-----|-----------------------|--|-----------|-----|------|--|
| | | | | 変更 | | | |
| P | LTR | DESCRIPTION | | DATE | DWN | APVD | |
| | E4 | REVISED ECR-21-107353 | | 14JUL21 | T.Q | N.S | |



- 注記
1. 適用電線範囲: AWG #26
被覆外径: $\phi 0.8\text{mm} \sim \phi 0.95\text{mm}$
 2. 材料: ハウジング-ガラス入りナイロン UL94V-0, 色: グレー、青
コンタクト-錫めっき済み、りん青銅
 3. ハウジング ロック:
2極は、1箇所 3~20極は、2箇所
 4. ゲート口は左付きと右付きが存在する。(2極品を除く)

- NOTES:
1. APPLICABLE WIRE SIZE: AWG #26
INSULATION DIA RANGE: $\phi 0.8\text{mm} \sim \phi 0.95\text{mm}$
 2. MATERIAL:
HOUSING: NYLON(G.F.) UL94V-0, COLOR: GRAY, BLUE
CONTACT: PRE-TIN PHOS-BRONZE
 3. HOUSING LOCK:
2 POSITION - SINGLE LOCK
3 TO 20 POSITIONS - DOUBLE LOCK
 4. CONNECTOR HAVE THE GATE LEFT SIDE AND RIGHT SIDE. (EXCEPT 2Pos.)

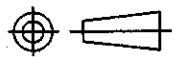

| | | | | | | | |
|---|--|---|--|---|------------|--|-------------------------------|
| DIMENSIONS: 単位: mm | | TOLERANCES UNLESS OTHERWISE SPECIFIED | | WIRE RANGE 適用電線断面積 0.08mm ² - 0.14mm ² | | INSULATION DIA 被覆外径 $\phi 0.8\text{mm} \sim \phi 0.95\text{mm}$ | |
|  | | 一般公差 10mm以上 : ± 0.2 30mm以上 : ± 0.25 100mm以上 : ± 0.3 ANGLE : $\pm 3^\circ$ | | DWN 12. JUL '96 T. FURUYA | |  | |
| | | | | CHK 12. JUL '96 J. TANIGAWA | | | |
| MATERIAL 材料 SEE NOTE 2 注記2参照 | | FINISH 仕上 SEE NOTE 2 注記2参照 | | APVD S. Kubouchi 9/15/99 製品規格 108-5525 APPLICATION SPEC 取付適用規格 114-5223 | | NAME 名称 AMP Mini Common Terminated (CT) Connector 1.5mm PITCH MT RECEPTACLE ASSEMBLY | |
| CUSTOMER DRAWING | | | | WEIGHT 表参照 | SIZE A3 | CAGE CODE 00779 | DRAWING NO. 番号 C=353293 |
| | | | | | | SCALE 尺度 NON | SHEET 1 OF 2 |
| | | | | | | REV E4 | |

RELEASED FOR PUBLICATION
ALL RIGHTS RESERVED.

THIS DRAWING IS UNPUBLISHED.
COPYRIGHT

| LOC | DIST | REVISIONS | | | |
|-----|------|-------------|------|-----|------|
| P | LTR | DESCRIPTION | DATE | DWN | APVD |
| | | SEE SHEET 1 | | | |

| | | | | | | | |
|------------|---------------|------|------|------|------------|------------|------------|
| 0.97 | 31.5 | 30.5 | 28.5 | 20 | 7-353293-0 | 4-353293-0 | 2-353293-0 |
| 0.92 | 30.0 | 29.0 | 27.0 | 19 | 6-353293-9 | 3-353293-9 | 1-353293-9 |
| 0.87 | 28.5 | 27.5 | 25.5 | 18 | 6-353293-8 | 3-353293-8 | 1-353293-8 |
| 0.83 | 27.0 | 26.0 | 24.0 | 17 | 6-353293-7 | 3-353293-7 | 1-353293-7 |
| 0.78 | 25.5 | 24.5 | 22.5 | 16 | 6-353293-6 | 3-353293-6 | 1-353293-6 |
| 0.73 | 24.0 | 23.0 | 21.0 | 15 | 6-353293-5 | 3-353293-5 | 1-353293-5 |
| 0.68 | 22.5 | 21.5 | 19.5 | 14 | 6-353293-4 | 3-353293-4 | 1-353293-4 |
| 0.64 | 21.0 | 20.0 | 18.0 | 13 | 6-353293-3 | 3-353293-3 | 1-353293-3 |
| 0.59 | 19.5 | 18.5 | 16.5 | 12 | 6-353293-2 | 3-353293-2 | 1-353293-2 |
| 0.54 | 18.0 | 17.0 | 15.0 | 11 | 6-353293-1 | 3-353293-1 | 1-353293-1 |
| 0.49 | 16.5 | 15.5 | 13.5 | 10 | 6-353293-0 | 3-353293-0 | 1-353293-0 |
| 0.45 | 15.0 | 14.0 | 12.0 | 9 | 5-353293-9 | 2-353293-9 | 353293-9 |
| 0.40 | 13.5 | 12.5 | 10.5 | 8 | 5-353293-8 | 2-353293-8 | 353293-8 |
| 0.35 | 12.0 | 11.0 | 9.0 | 7 | 5-353293-7 | 2-353293-7 | 353293-7 |
| 0.30 | 10.5 | 9.5 | 7.5 | 6 | 5-353293-6 | 2-353293-6 | 353293-6 |
| 0.26 | 9.0 | 8.0 | 6.0 | 5 | 5-353293-5 | 2-353293-5 | 353293-5 |
| 0.21 | 7.5 | 6.5 | 4.5 | 4 | 5-353293-4 | 2-353293-4 | 353293-4 |
| 0.16 | 6.0 | 5.0 | 3.0 | 3 | 5-353293-3 | 2-353293-3 | 353293-3 |
| 0.11 | 4.5 | 3.5 | 1.5 | 2 | 5-353293-2 | 2-353293-2 | 353293-2 |
| WEIGHT (g) | C | B | A | Pos. | BLUE | BLACK | GRAY |
| | 寸法 DIMENSIONS | | | | 製品型番 P/N | | |

| | | | | |
|---|---|---|--|--|
| <p>DIMENSIONS: 単位: ㎜</p> <p>TOLERANCES UNLESS OTHERWISE SPECIFIED:</p> <p>一般公差</p> <p>10 > : ±0.2</p> <p>30 > : ±0.25</p> <p>100 > : ±0.3</p> <p>ANGLE : ±3°</p>  | <p>DWN T. FURUYA 12. JUL '96</p> <p>CHK J. TANIGAWA 12. JUL '96</p> <p>APVD</p> | <p>WIRE RANGE 絕合電線断面積 0.08mm²-0.14mm²</p> <p>INSULATION DIA 被覆外径 ∅0.8mm-∅0.95mm</p> | <p>MATERIAL SEE SHEET 1 OF 2 材料 枚目参照</p> <p>FINISH SEE SHEET 1 OF 2 仕上 枚目参照</p> | |
| |  <p>TE Connectivity</p> | | <p>NAME 名称 AMP Mini Common Terminated (CT) Connector 1.5mm PITCH</p> <p>MT RECEPTACLE ASSEMBLY</p> | |
| | <p>PRODUCT SPEC 製品規格 108-5525</p> <p>APPLICATION SPEC 取付適用規格 114-5223</p> <p>WEIGHT SEE TABLE 表参照</p> | <p>SIZE A4</p> <p>CAGE CODE 00779</p> <p>DRAWING NO 番号 C-353293</p> | | |
| | <p>CUSTOMER DRAWING</p> | | <p>SCALE 尺度 NON</p> <p>SHEET 2 OF 2</p> <p>REV E4</p> | |

X-ON Electronics

Largest Supplier of Electrical and Electronic Components

Click to view similar products for [Headers & Wire Housings](#) category:

Click to view products by [TE Connectivity](#) manufacturer:

Other Similar products are found below :

[892-18-020-10-001101](#) [58102-G61-06LF](#) [582553-1](#) [0009485154](#) [009176003701906](#) [0050291907](#) [LY20-4P-DT1-P1E-BR](#) [02.125.8002.8](#)
[609-3404](#) [61062-3](#) [61082-181009](#) [622-3653LF](#) [63453-116](#) [636-1030](#) [636-1427](#) [636-3427](#) [636-4007](#) [641938-9](#) [641991-4](#) [644827-2](#) [65817-010LF](#) [65817-015LF](#) [65863-015LF](#) [66207-023LF](#) [67095-007LF](#) [67601157](#) [68645-018](#) [68648-049](#) [70.362.1628.0](#) [70-4210](#) [70-4226B](#) [70-4853B](#) [707-5020](#) [707-5028](#) [71.350.2428.0](#) [71918-208LF](#) [71961-016LF](#) [733-134](#) [733-162](#) [754199-000](#) [760-3052](#) [787-8014-00](#) [79531-3000](#)
[FCN-360C032-B](#) [FCN-367T-T012/H](#) [FCN-723D010/2](#) [80.063.4001.1](#) [800-90-001-10-001000](#) [800-90-010-10-002000](#) [801-43-002-10-013000](#)