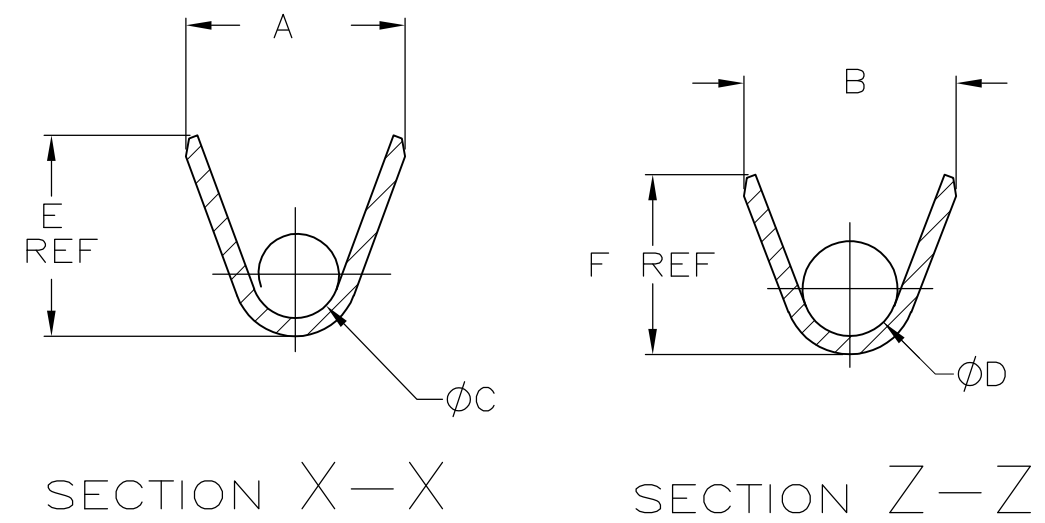
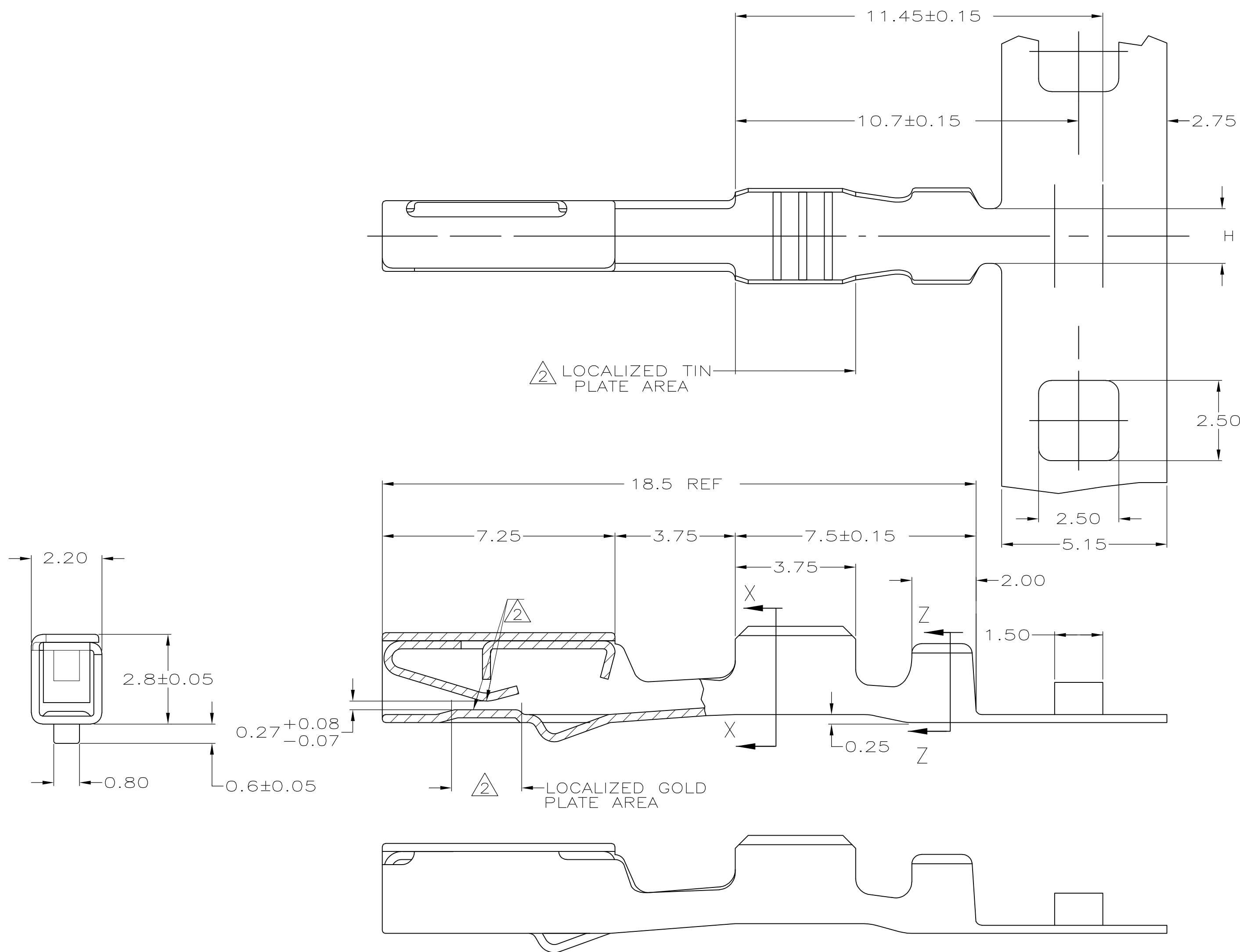


THIS DRAWING IS UNPUBLISHED. RELEASED FOR PUBLICATION  
 © COPYRIGHT BY TYCO ELECTRONICS CORPORATION. ALL RIGHTS RESERVED.

LOC	DIST	REVISIONS			
P	LTR	DESCRIPTION	DATE	DWN	APVD
FX	54	C	REV PER ECR-07-023248	01OCT07	JM JM



- 1 MATERIAL: 0.25 THK COPPER ALLOY
- 2 FINISH: PLATE 0.00076 MIN THK SELECT GOLD IN LOCALIZED GOLD PLATE AREA AND PLATE 0.0025-0.0076 THK TIN IN LOCALIZED TIN PLATE AREA, ALL OVER 0.00200 MIN THK NICKEL.

H	F	E	D	C	B	A	WIRE SIZE	PART NUMBER
1.6	1.80	2.04	1.45	0.90	2.40	2.30	22	638098-8
1.7	2.46	2.75	1.30	1.20	2.90	3.00	18-20	638098-7
638098-2 REELED FOR AMP APPLICATORS		22	638098-8					
638098-1 REELED FOR AMP APPLICATORS		18-20	638098-7					

THIS AMP PROPRIETARY INFORMATION IS CONFIDENTIAL AND IS DISCLOSED TO YOU ON CONDITION THAT NO FURTHER DISCLOSURE IS MADE BY YOU TO ANYONE OTHER THAN AMP PERSONNEL WITHOUT WRITTEN AUTHORIZATION FROM AMP INCORPORATED, HARRISBURG, PA.

THIS DRAWING IS A CONTROLLED DOCUMENT.

DIMENSIONS: mm	TOLERANCES UNLESS OTHERWISE SPECIFIED:	DWN 4-26-94 D.R.WORTHINGTON	8/1/97	Tyco Electronics Tyco Electronics Corporation Harrisburg, PA 17105-3608
0 PLC ± -	1 PLC ± 0.2	CHK C.PAUL	8/1/97	
2 PLC ± 0.1	3 PLC ± -	APVD C.PAUL	8/1/97	NAME RECEPTACLE CONTACT, SINGLE BEAM
4 PLC ± -	ANGLES ± 5°	PRODUCT SPEC		SIZE A2
MATERIAL 1	FINISH 2	APPLICATION SPEC	114-6063	CAGE CODE 00779
		WEIGHT -		DRAWING NO C-638098
		CUSTOMER DRAWING	SCALE 10:1	SHEET 1 OF 1

## X-ON Electronics

Largest Supplier of Electrical and Electronic Components

*Click to view similar products for [Terminals](#) category:*

*Click to view products by [TE Connectivity](#) manufacturer:*

Other Similar products are found below :

[HT-13-10](#) [71M-250-32-NB](#) [01-2065-1-0216](#) [00581P0075](#) [M10-10RX](#) [M10BCK](#) [60205-1](#) [604200-1](#) [60598-1-CUT-TAPE](#) [60617-1-C](#) [60873-1](#) [M14-516R/SK](#) [M14-6RSX](#) [M18-8FBX](#) [M18-8R/LX](#) [M18BCK](#) [61314-6-C](#) [61-S](#) [61-SN-A](#) [62-NBM-A](#) [63-S](#) [640179-1](#) [640917-2-CUT-TAPE](#) [6501550002](#) [66107-2-C](#) [696683-1](#) [696834-1](#) [696861-1](#) [696931-1](#) [696999-1](#) [M8-516RK](#) [M86700006](#) [MA250DMFMX-A](#) [701-2007](#) [701-2307](#) [701-7761-03](#) [70F-110-32-PB](#) [718-N-A](#) [71M-187-20-NBL](#) [71M-250-32-NBL](#) [72F-187-20-NBL](#) [72M-250-32-NBL](#) [7310](#) [73F-250-32](#) [73F-250-32-NL](#) [F14-10C](#) [F-1M](#) [751-250](#) [76650-5002](#) [76828-149](#)