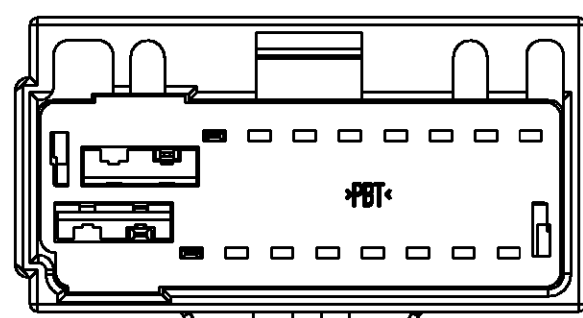
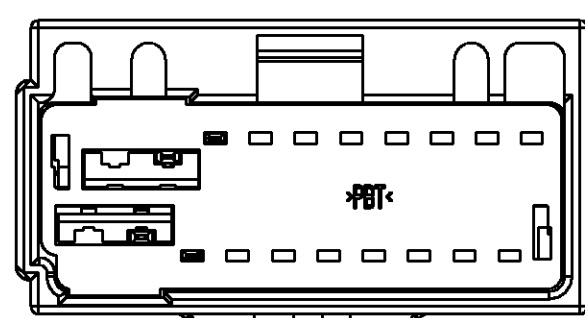


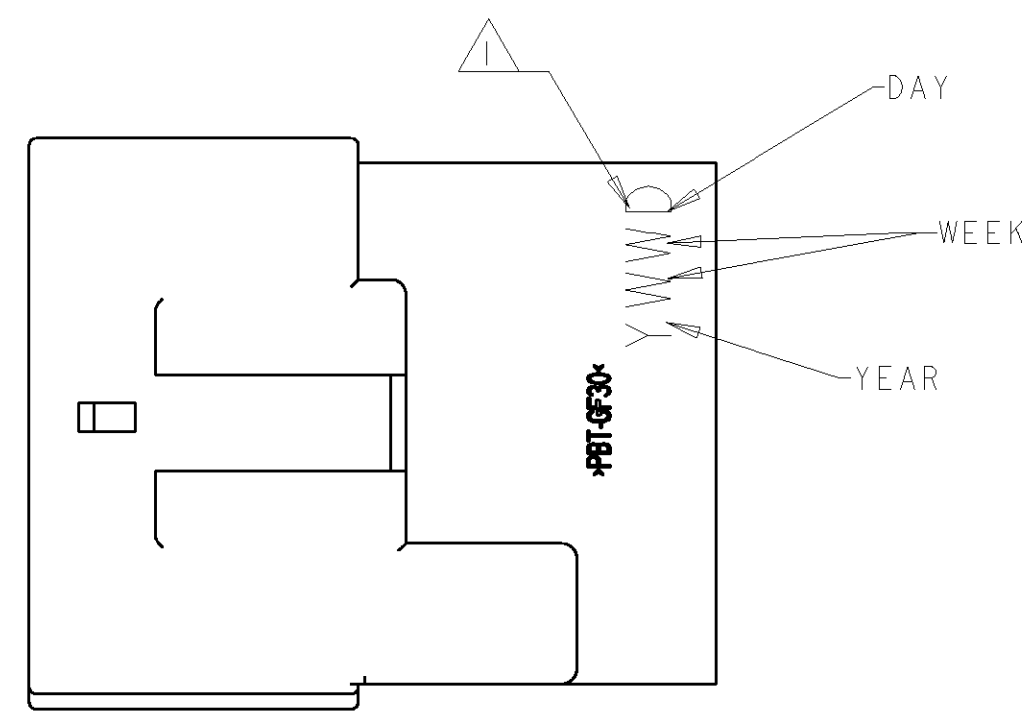
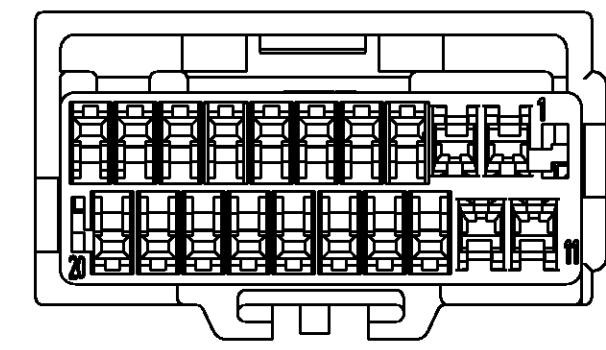
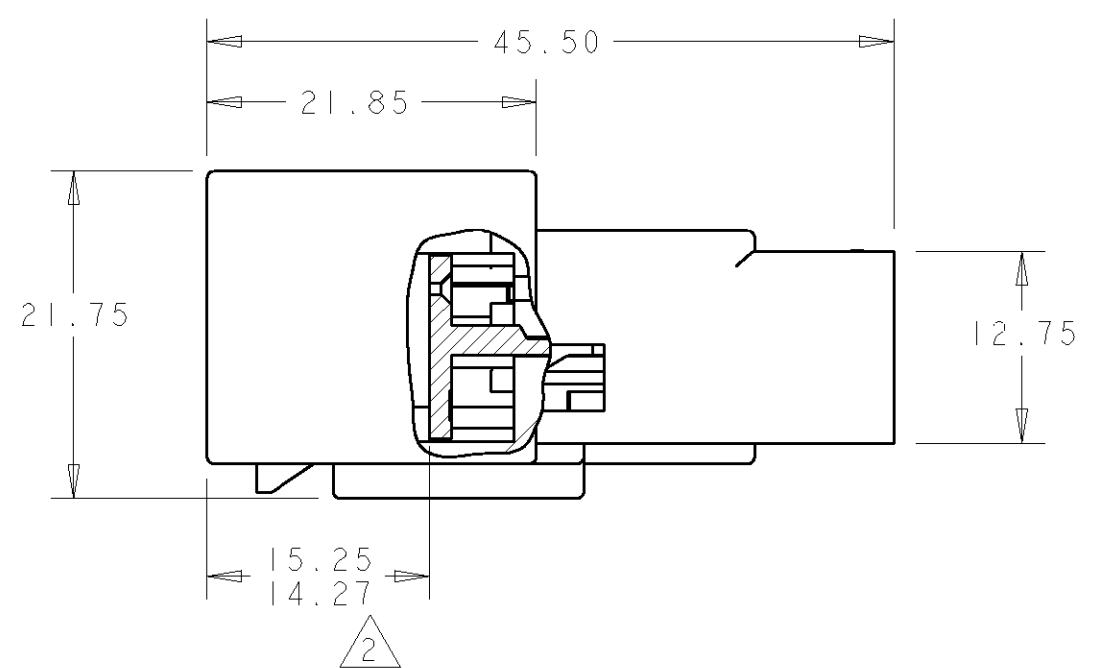
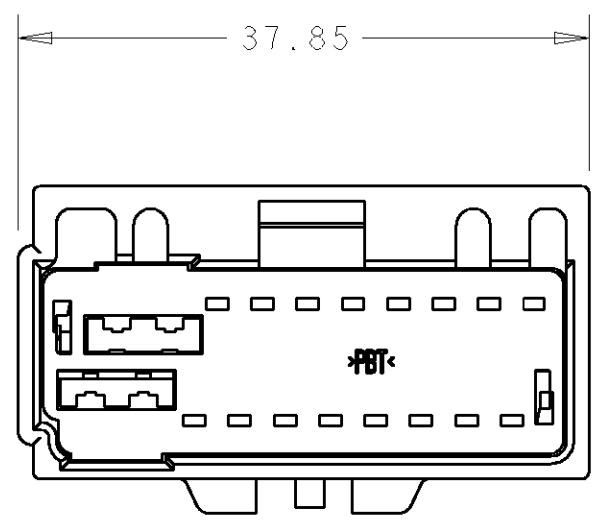
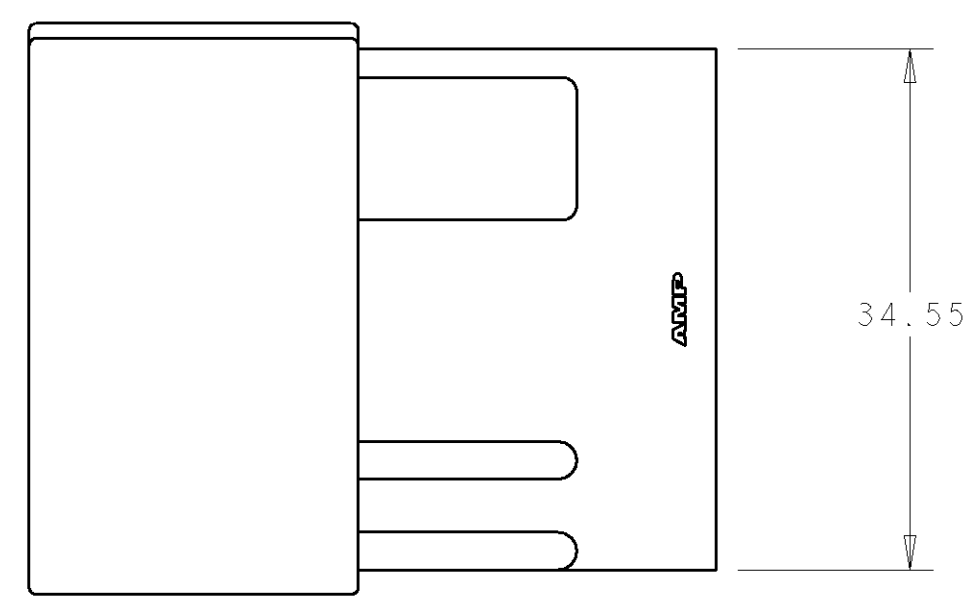
LOC	DIST	REVISIONS			
P	LTR	DESCRIPTION	DATE	DWN	APVD
	01	REVISED PER ECR-05-004357	07JUN2005	AS	AS
	0	RELEASED	09MAR2000	JRB	CBP



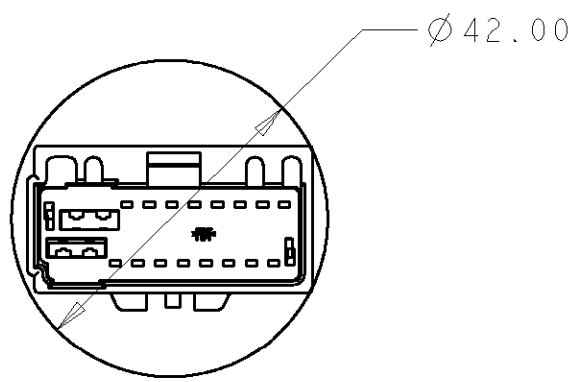
SCALE 2:1  
 638157-1  
 KEY A  
 COLOR - BLACK



SCALE 2:1  
 638157-2  
 KEY B  
 COLOR - GRAY



- ① DATE CODE TO BE PERMANENTLY APPLIED APPROX IN AREA SHOWN.
- ② TPA TO BE LATCHED POSITIVELY TO THE HOUSING IN THE STAGED POSITION AS SHOWN.



SCALE 1:1

B	GRAY	638157-2
A	BLACK	638157-1
KEY	COLOR	PART NO.

<small>THIS DRAWING IS A CONTROLLED DOCUMENT FOR AMP INCORPORATED. IT IS SUBJECT TO CHANGE AND THE CONTROLLING ENGINEERING ORGANIZATION SHOULD BE CONTACTED FOR THE LATEST REVISION.</small>		DWN J. BUSSARD 09MAR2000 CHK CB PAUL 09MAR2000 APVD CB PAUL 09MAR2000	<b>AMP</b> AMP Incorporated Harrisburg, PA 17105-3608
DIMENSIONS: mm 	TOLERANCES UNLESS OTHERWISE SPECIFIED: 0 PLC ±--- 1 PLC ±0.3 2 PLC ±0.10 3 PLC ±--- 4 PLC ±0.0001 ANGLES ± FINISH -	PRODUCT SPEC - APPLICATION SPEC - WEIGHT -	NAME 20 POSITION CAP ASSEMBLY WIRE TO WIRE CONNECTOR SIZE A2 CAGE CODE 00779 DRAWING NO. 638157
MATERIAL - CUSTOMER DRAWING			SCALE 2:1 SHEET 1 OF 1 REV 01

## X-ON Electronics

Largest Supplier of Electrical and Electronic Components

*Click to view similar products for [Headers & Wire Housings](#) category:*

*Click to view products by [TE Connectivity](#) manufacturer:*

Other Similar products are found below :

[892-18-020-10-001101](#) [58102-G61-06LF](#) [582553-1](#) [0009485154](#) [009176003701906](#) [0050291907](#) [LY20-4P-DT1-P1E-BR](#) [02.125.8002.8](#)  
[609-3404](#) [61062-3](#) [61082-181009](#) [622-3653LF](#) [63453-116](#) [636-1030](#) [636-1427](#) [636-3427](#) [636-4007](#) [641938-9](#) [641991-4](#) [644827-2](#) [65817-](#)  
[010LF](#) [65817-015LF](#) [65863-015LF](#) [66207-023LF](#) [67095-007LF](#) [67601157](#) [68645-018](#) [68648-049](#) [70.362.1628.0](#) [70-4210](#) [70-4226B](#) [70-](#)  
[4853B](#) [707-5020](#) [707-5028](#) [71.350.2428.0](#) [71918-208LF](#) [71961-016LF](#) [733-134](#) [733-162](#) [754199-000](#) [760-3052](#) [787-8014-00](#) [79531-3000](#)  
[FCN-360C032-B](#) [FCN-367T-T012/H](#) [FCN-723D010/2](#) [80.063.4001.1](#) [800-90-001-10-001000](#) [800-90-010-10-002000](#) [801-43-002-10-013000](#)