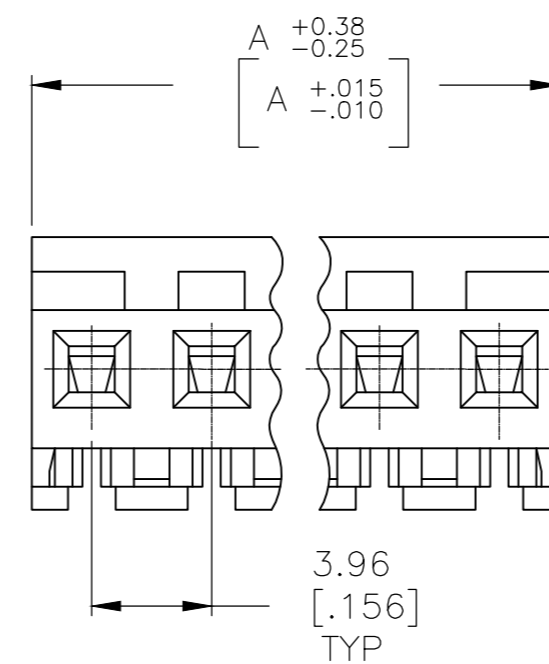
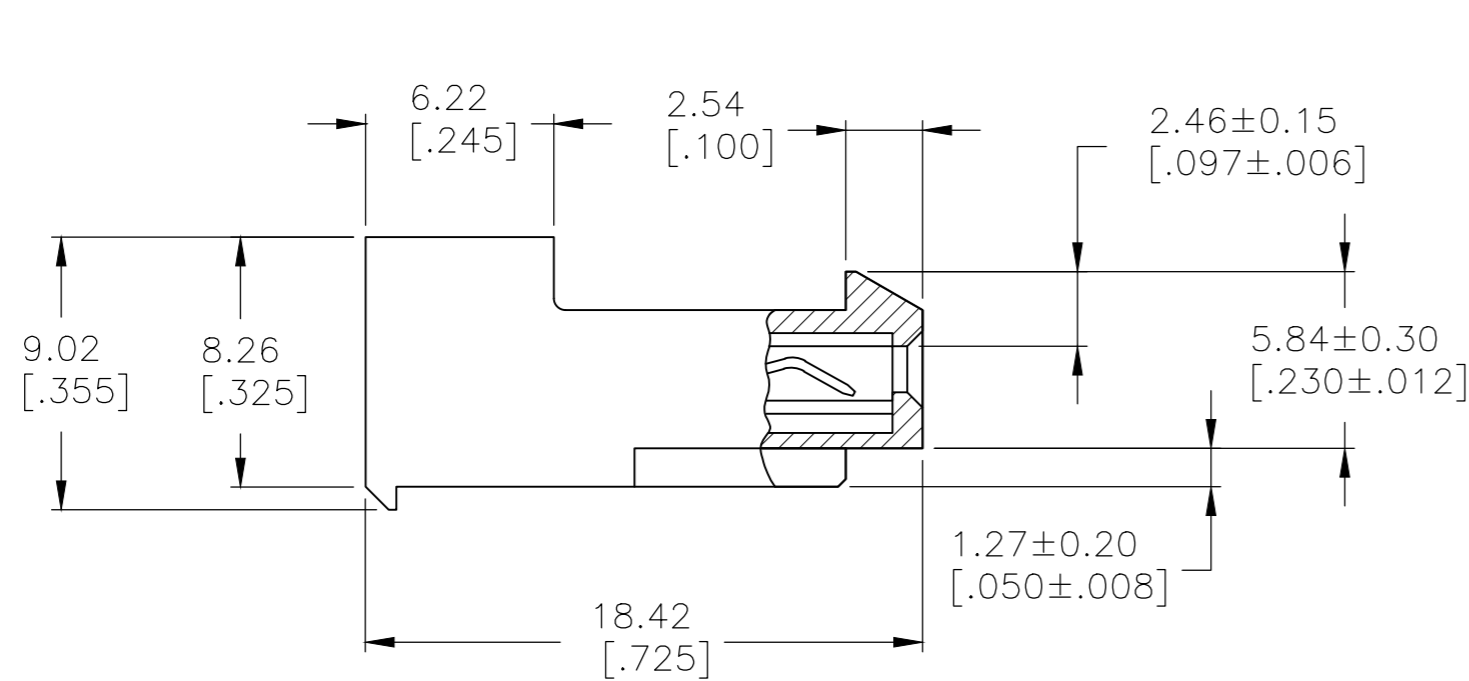
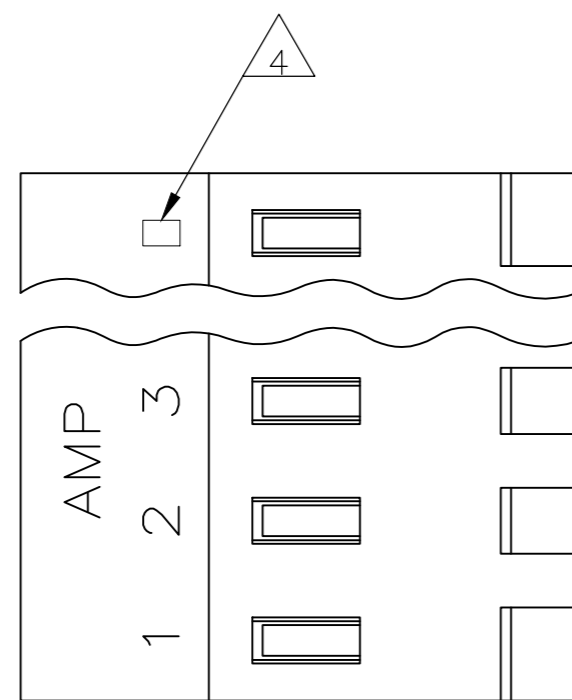


THIS DRAWING IS UNPUBLISHED. RELEASED FOR PUBLICATION  
 © COPYRIGHT - By - ALL RIGHTS RESERVED.

| LOC |     | DIST        |   | REVISIONS                 |           |       |  |
|-----|-----|-------------|---|---------------------------|-----------|-------|--|
| P   | LTR | DESCRIPTION |   | DATE                      | DWN       | APVD  |  |
| CM  | OO  | P           | P | REVISED PER ECR-20-000814 | 26MAY2020 | PC SW |  |



|              |    |            |
|--------------|----|------------|
| 95.10[3.744] | 24 | 5-640426-4 |
| 91.13[3.588] | 23 | 5-640426-3 |
| 87.17[3.432] | 22 | 5-640426-2 |
| 83.21[3.276] | 21 | 5-640426-1 |
| 79.25[3.120] | 20 | 5-640426-0 |
| 75.29[2.964] | 19 | 4-640426-9 |
| 71.32[2.808] | 18 | 4-640426-8 |
| 67.36[2.652] | 17 | 4-640426-7 |
| 63.40[2.496] | 16 | 4-640426-6 |
| 59.44[2.340] | 15 | 4-640426-5 |
| 55.47[2.184] | 14 | 4-640426-4 |
| 51.51[2.028] | 13 | 4-640426-3 |
| 47.55[1.872] | 12 | 4-640426-2 |
| 43.59[1.716] | 11 | 4-640426-1 |
| 39.62[1.560] | 10 | 4-640426-0 |
| 35.66[1.404] | 9  | 3-640426-9 |
| 31.70[1.248] | 8  | 3-640426-8 |
| 27.74[1.092] | 7  | 3-640426-7 |
| 23.77[.936]  | 6  | 3-640426-6 |
| 19.81[.780]  | 5  | 3-640426-5 |
| 15.85[.624]  | 4  | 3-640426-4 |
| 11.89[.468]  | 3  | 3-640426-3 |
| 7.92[.312]   | 2  | 3-640426-2 |

1 MATERIAL: CONNECTOR - NYLON UL94-V2 (ORANGE)  
 CONTACTS - 0.30 [.012] THICK COPPER ALLOY  
 (BRIGHT TIN-LEAD 0.00203 [.000080] MIN. THICK  
 FOR CONTACTS 640426-2 THRU 2-640426-4).  
 (MATTE WHISKER MITIGATED TIN PLATE 0.00203 [.000080]  
 MIN. THICKNESS OVER NICKEL UNDERPLATE FOR CONTACTS  
 3-640426-2 THRU 5-640426-4).

2 CONTACTS ACCEPT 18 AWG WIRE WITH 2.41 [.095] MAX  
 INSULATION DIAMETER.

3 CONTACTS MUST ACCEPT 1.14±0.03 [.045±.001]  
 POST AND REMAIN LOCKED IN POSITION.

4 IDENTIFICATION NUMBER FOR LAST CIRCUIT MAY  
 NOT APPEAR ON ALL ASSEMBLIES.

5 DIMENSIONS IN BRACKETS ARE IN INCHES.

6 HOUSING FEATURES ARE: CLOSED END WITH LOCKING  
 RAMP.

7 OBSOLETE PARTS

|   |                          |              |    |            |
|---|--------------------------|--------------|----|------------|
| 7 | SUPERSEDED BY 5-640426-4 | 95.10[3.744] | 24 | 2-640426-4 |
|   | SUPERSEDED BY 5-640426-3 | 91.13[3.588] | 23 | 2-640426-3 |
|   | SUPERSEDED BY 5-640426-2 | 87.17[3.432] | 22 | 2-640426-2 |
|   | SUPERSEDED BY 5-640426-1 | 83.21[3.276] | 21 | 2-640426-1 |
|   | SUPERSEDED BY 5-640426-0 | 79.25[3.120] | 20 | 2-640426-0 |
|   | SUPERSEDED BY 4-640426-9 | 75.29[2.964] | 19 | 1-640426-9 |
|   | SUPERSEDED BY 4-640426-8 | 71.32[2.808] | 18 | 1-640426-8 |
|   | SUPERSEDED BY 4-640426-7 | 67.36[2.652] | 17 | 1-640426-7 |
|   | SUPERSEDED BY 4-640426-6 | 63.40[2.496] | 16 | 1-640426-6 |
|   | SUPERSEDED BY 4-640426-5 | 59.44[2.340] | 15 | 1-640426-5 |
|   | SUPERSEDED BY 4-640426-4 | 55.47[2.184] | 14 | 1-640426-4 |
|   | SUPERSEDED BY 4-640426-3 | 51.51[2.028] | 13 | 1-640426-3 |
|   | SUPERSEDED BY 4-640426-2 | 47.55[1.872] | 12 | 1-640426-2 |
|   | SUPERSEDED BY 4-640426-1 | 43.59[1.716] | 11 | 1-640426-1 |
|   | SUPERSEDED BY 4-640426-0 | 39.62[1.560] | 10 | 1-640426-0 |
|   | SUPERSEDED BY 3-640426-9 | 35.66[1.404] | 9  | 1-640426-9 |
|   | SUPERSEDED BY 3-640426-8 | 31.70[1.248] | 8  | 1-640426-8 |
|   | SUPERSEDED BY 3-640426-7 | 27.74[1.092] | 7  | 1-640426-7 |
|   | SUPERSEDED BY 3-640426-6 | 23.77[.936]  | 6  | 1-640426-6 |
|   | SUPERSEDED BY 3-640426-5 | 19.81[.780]  | 5  | 1-640426-5 |
|   | SUPERSEDED BY 3-640426-4 | 15.85[.624]  | 4  | 1-640426-4 |
|   | SUPERSEDED BY 3-640426-3 | 11.89[.468]  | 3  | 1-640426-3 |
|   | SUPERSEDED BY 3-640426-2 | 7.92[.312]   | 2  | 1-640426-2 |

|  |  |  |   |               |
|--|--|--|---|---------------|
| THIS DRAWING IS A CONTROLLED DOCUMENT. |  | DWN<br>S. CARPENTER<br>26JUN2003       | TE Connectivity                                 |               |
| DIMENSIONS:<br>mm [INCHES]             |  | CHK<br>GUERRIERO, SHAYNIA<br>26JUN2003 | NAME  |               |
| TOLERANCES UNLESS OTHERWISE SPECIFIED: |  | APVD<br>D. BOSSI<br>26JUN2003          | MTA 156 CONNECTOR ASSEMBLY,<br>18 AWG, STANDARD |               |
| 0 PLC ± -                              |  | PRODUCT SPEC                           | SIZE  | CAGE CODE     |
| 1 PLC ± -                              |  | 108-1051                               | A2  | 00779         |
| 2 PLC ± -                              |  | APPLICATION SPEC                       | DRAWING NO                                      | RESTRICTED TO |
| 3 PLC ± 0.13 [.005]                    |  | 114-1020                               | C=640426  | -             |
| 4 PLC ± -                              |  | WEIGHT                                 | SCALE   | SHEET         |
| ANGLES ± -                             |  | CUSTOMER DRAWING                       | 4:1   | 1 OF 1        |
| FINISH                                 |  | SCALE                                  | REV   | P             |

## X-ON Electronics

Largest Supplier of Electrical and Electronic Components

*Click to view similar products for [Headers & Wire Housings](#) category:*

*Click to view products by [TE Connectivity](#) manufacturer:*

Other Similar products are found below :

[892-18-020-10-001101](#) [58102-G61-06LF](#) [582553-1](#) [0009485154](#) [009176003701906](#) [0050291907](#) [LY20-4P-DT1-P1E-BR](#) [02.125.8002.8](#)  
[609-3404](#) [61062-3](#) [61082-181009](#) [622-3653LF](#) [63453-116](#) [636-1030](#) [636-1427](#) [636-3427](#) [636-4007](#) [641938-9](#) [641991-4](#) [644827-2](#) [65817-](#)  
[010LF](#) [65817-015LF](#) [65863-015LF](#) [66207-023LF](#) [67095-007LF](#) [67601157](#) [68645-018](#) [68648-049](#) [70.362.1628.0](#) [70-4210](#) [70-4226B](#) [70-](#)  
[4853B](#) [707-5020](#) [707-5028](#) [71.350.2428.0](#) [71918-208LF](#) [71961-016LF](#) [733-134](#) [733-162](#) [754199-000](#) [760-3052](#) [787-8014-00](#) [79531-3000](#)  
[FCN-360C032-B](#) [FCN-367T-T012/H](#) [FCN-723D010/2](#) [80.063.4001.1](#) [800-90-001-10-001000](#) [800-90-010-10-002000](#) [801-43-002-10-013000](#)