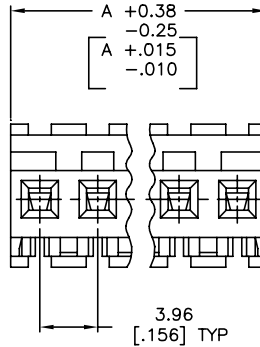
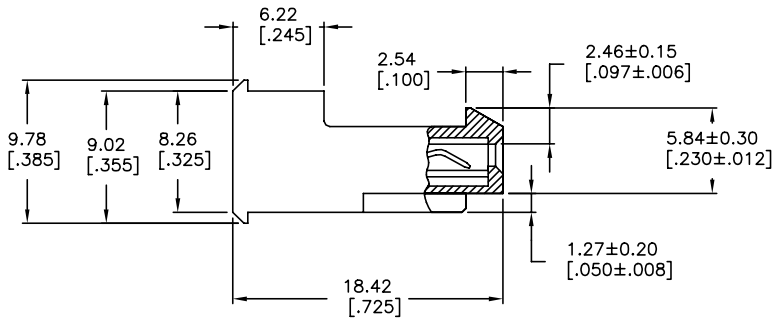
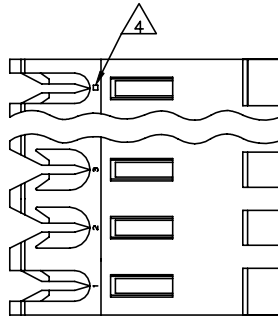


THIS DRAWING IS UNPUBLISHED. RELEASED FOR PUBLICATION
 © COPYRIGHT - By - TE CONNECTIVITY ALL RIGHTS RESERVED.

LOC	DIST	REVISIONS			
P	LTR	DESCRIPTION	DATE	DN	APD
CM	54	V	REVISED PER ECR-20-000820	27MAY2020	PC SW



REV	DATE	DESCRIPTION	NO OF CIRCUITS	PART NO
95.10	[3.744]	24	5-640600-4	
91.14	[3.588]	23	5-640600-3	
87.17	[3.432]	22	5-640600-2	
83.21	[3.276]	21	5-640600-1	
79.25	[3.120]	20	5-640600-0	
75.29	[2.964]	19	4-640600-9	
71.32	[2.808]	18	4-640600-8	
67.36	[2.652]	17	4-640600-7	
63.40	[2.496]	16	4-640600-6	
59.44	[2.340]	15	4-640600-5	
55.47	[2.184]	14	4-640600-4	
51.51	[2.028]	13	4-640600-3	
47.55	[1.872]	12	4-640600-2	
43.59	[1.716]	11	4-640600-1	
39.62	[1.560]	10	4-640600-0	
35.66	[1.404]	9	3-640600-9	
31.70	[1.248]	8	3-640600-8	
27.74	[1.092]	7	3-640600-7	
23.77	[.936]	6	3-640600-6	
19.81	[.780]	5	3-640600-5	
15.85	[.624]	4	3-640600-4	
11.89	[.468]	3	3-640600-3	
7.92	[.312]	2	3-640600-2	
95.10	[3.744]	24	2-640600-4	
91.14	[3.588]	23	2-640600-3	
87.17	[3.432]	22	2-640600-2	
83.21	[3.276]	21	2-640600-1	
79.25	[3.120]	20	2-640600-0	
75.29	[2.964]	19	1-640600-9	
71.32	[2.808]	18	1-640600-8	
67.36	[2.652]	17	1-640600-7	
63.40	[2.496]	16	1-640600-6	
59.44	[2.340]	15	1-640600-5	
55.47	[2.184]	14	1-640600-4	
51.51	[2.028]	13	1-640600-3	
47.55	[1.872]	12	1-640600-2	
43.59	[1.716]	11	1-640600-1	
39.62	[1.560]	10	1-640600-0	
35.66	[1.404]	9	640600-9	
31.70	[1.248]	8	640600-8	
27.74	[1.092]	7	640600-7	
23.77	[.936]	6	640600-6	
19.81	[.780]	5	640600-5	
15.85	[.624]	4	640600-4	
11.89	[.468]	3	640600-3	
7.92	[.312]	2	640600-2	

- △ MATERIAL: CONNECTOR - NYLON UL94V-2 (YELLOW).
CONTACTS - 0.30[.012] THICK COPPER ALLOY (BRIGHT TIN-LEAD 0.00203[.000080] MIN. THICK FOR CONTACTS 640600-2 THRU 2-640600-4) (MATTE WHISKER MITIGATED TIN 0.00203[.000080] MIN THICKNESS OVER NICKEL UNDERPLATE FOR 3-640600-2 THRU 5-640600-4).
- 2 CONTACTS ACCEPT 20 AWG WIRE WITH 2.41[.095] MAX INSULATION DIAMETER.
- 3 CONTACTS MUST ACCEPT 1.14±0.03[.045±.001] SQUARE POST AND REMAIN LOCKED IN POSITION.
- △ IDENTIFICATION NUMBER FOR LAST CIRCUIT MAY NOT APPEAR ON ALL ASSEMBLIES.
- 5 DIMENSIONS IN BRACKETS ARE IN INCHES.
- 6 HOUSING FEATURES ARE: FEED-THRU WITH LOCKING RAMP.
- △ OBSOLETE PARTS: OBSOLETE CIS STREAMLINING PER D.RENAUD/D.SINISI
- △ OBSOLETE PARTS

SUPERSEDED △	95.10	[3.744]	24	2-640600-4
	91.14	[3.588]	23	2-640600-3
	87.17	[3.432]	22	2-640600-2
	83.21	[3.276]	21	2-640600-1
	79.25	[3.120]	20	2-640600-0
	75.29	[2.964]	19	1-640600-9
	71.32	[2.808]	18	1-640600-8
	67.36	[2.652]	17	1-640600-7
	63.40	[2.496]	16	1-640600-6
	59.44	[2.340]	15	1-640600-5
△ SUPERSEDED	55.47	[2.184]	14	1-640600-4
SUPERSEDED △	51.51	[2.028]	13	1-640600-3
SUPERSEDED △	47.55	[1.872]	12	1-640600-2
	43.59	[1.716]	11	1-640600-1
	39.62	[1.560]	10	1-640600-0
	35.66	[1.404]	9	640600-9
△ SUPERSEDED	31.70	[1.248]	8	640600-8
△ SUPERSEDED	27.74	[1.092]	7	640600-7
SUPERSEDED △	23.77	[.936]	6	640600-6
	19.81	[.780]	5	640600-5
	15.85	[.624]	4	640600-4
	11.89	[.468]	3	640600-3
	7.92	[.312]	2	640600-2

THIS DRAWING IS A CONTROLLED DOCUMENT. DWN: B. LEWIS 12FEB91
 CHK: R. SWING 12FEB91
 APD: D. CLARK 19FEB91

TE Connectivity
 MTA-156 CONNECTOR ASSEMBLY, 20 AWG, STANDARD

DIMENSIONS: mm [INCHES]	TOLERANCES UNLESS OTHERWISE SPECIFIED:	0 PLC ± -	1 PLC ± -	2 PLC ± -	3 PLC ± 0.13 [0.005]	4 PLC ± -		
FINISH		ANGLES		SIZE		CAGE CODE	DRAWING NO	RESTRICTED TO
MATERIAL		FINISH		WEIGHT		A2 00779 C=640600		SCALE 4:1 SHEET 1 of 1 REV V

CUSTOMER DRAWING

X-ON Electronics

Largest Supplier of Electrical and Electronic Components

Click to view similar products for [Headers & Wire Housings](#) category:

Click to view products by [TE Connectivity](#) manufacturer:

Other Similar products are found below :

[892-18-020-10-001101](#) [58102-G61-06LF](#) [582553-1](#) [0009485154](#) [009176003701906](#) [0050291907](#) [LY20-4P-DT1-P1E-BR](#) [02.125.8002.8](#)
[609-3404](#) [61062-3](#) [61082-181009](#) [622-3653LF](#) [63453-116](#) [636-1030](#) [636-1427](#) [636-3427](#) [636-4007](#) [641938-9](#) [641991-4](#) [644827-2](#) [65817-](#)
[010LF](#) [65817-015LF](#) [65863-015LF](#) [66207-023LF](#) [67095-007LF](#) [67601157](#) [68645-018](#) [68648-049](#) [70.362.1628.0](#) [70-4210](#) [70-4226B](#) [70-](#)
[4853B](#) [707-5020](#) [707-5028](#) [71.350.2428.0](#) [71918-208LF](#) [71961-016LF](#) [733-134](#) [733-162](#) [754199-000](#) [760-3052](#) [79531-3000](#) [FCN-](#)
[360C032-B](#) [FCN-367T-T012/H](#) [FCN-723D010/2](#) [80.063.4001.1](#) [800-90-010-10-002000](#) [801-43-002-10-013000](#) [801-43-006-10-002000](#)
[801-93-011-10-001000](#)