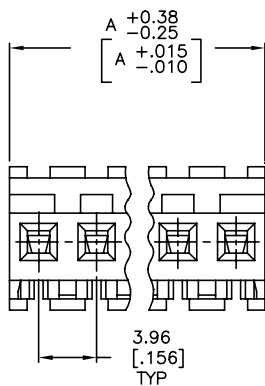
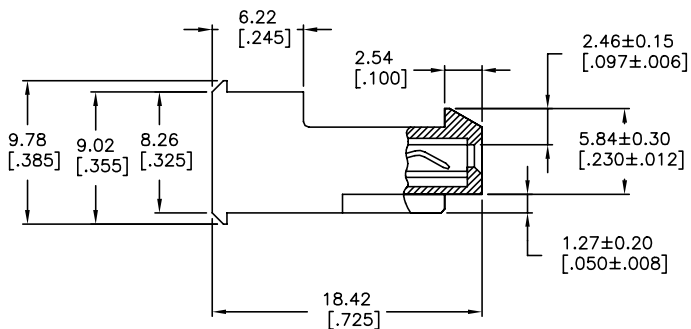
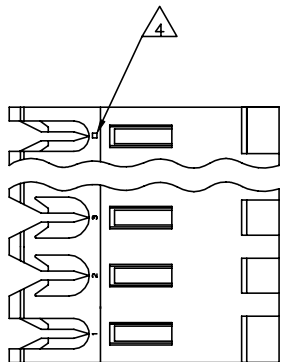


THIS DRAWING IS UNPUBLISHED. RELEASED FOR PUBLICATION
 © COPYRIGHT - By - TE CONNECTIVITY ALL RIGHTS RESERVED.

REVISIONS					
P	LTN	DESCRIPTION	DATE	DWN	APVD
V		REVISED PER ECR-20-000822	27MAY2020	PC	SW



95.10	[3.744]	24	5-640601-4
91.14	[3.588]	23	5-640601-3
87.17	[3.432]	22	5-640601-2
83.21	[3.276]	21	5-640601-1
79.25	[3.120]	20	5-640601-0
75.29	[2.964]	19	4-640601-9
71.32	[2.808]	18	4-640601-8
67.36	[2.652]	17	4-640601-7
63.40	[2.496]	16	4-640601-6
59.44	[2.340]	15	4-640601-5
55.47	[2.184]	14	4-640601-4
51.51	[2.028]	13	4-640601-3
47.55	[1.872]	12	4-640601-2
43.59	[1.716]	11	4-640601-1
39.62	[1.560]	10	4-640601-0
35.66	[1.404]	9	3-640601-9
31.70	[1.248]	8	3-640601-8
27.74	[1.092]	7	3-640601-7
23.77	[.936]	6	3-640601-6
19.81	[.780]	5	3-640601-5
15.85	[.624]	4	3-640601-4
11.89	[.468]	3	3-640601-3
7.92	[.312]	2	3-640601-2
95.10	[3.744]	24	2-640601-4
91.14	[3.588]	23	2-640601-3
87.17	[3.432]	22	2-640601-2
83.21	[3.276]	21	2-640601-1
79.25	[3.120]	20	2-640601-0
75.29	[2.964]	19	1-640601-9
71.32	[2.808]	18	1-640601-8
67.36	[2.652]	17	1-640601-7
63.40	[2.496]	16	1-640601-6
59.44	[2.340]	15	1-640601-5
55.47	[2.184]	14	1-640601-4
51.51	[2.028]	13	1-640601-3
47.55	[1.872]	12	1-640601-2
43.59	[1.716]	11	1-640601-1
39.62	[1.560]	10	1-640601-0
35.66	[1.404]	9	640601-9
31.70	[1.248]	8	640601-8
27.74	[1.092]	7	640601-7
23.77	[.936]	6	640601-6
19.81	[.780]	5	640601-5
15.85	[.624]	4	640601-4
11.89	[.468]	3	640601-3
7.92	[.312]	2	640601-2

OBSELETE	95.10	[3.744]	24	2-640601-4
SUPERSEDED	91.14	[3.588]	23	2-640601-3
SUPERSEDED	87.17	[3.432]	22	2-640601-2
SUPERSEDED	83.21	[3.276]	21	2-640601-1
SUPERSEDED	79.25	[3.120]	20	2-640601-0
SUPERSEDED	75.29	[2.964]	19	1-640601-9
SUPERSEDED	71.32	[2.808]	18	1-640601-8
SUPERSEDED	67.36	[2.652]	17	1-640601-7
SUPERSEDED	63.40	[2.496]	16	1-640601-6
SUPERSEDED	59.44	[2.340]	15	1-640601-5
SUPERSEDED	55.47	[2.184]	14	1-640601-4
SUPERSEDED	51.51	[2.028]	13	1-640601-3
SUPERSEDED	47.55	[1.872]	12	1-640601-2
SUPERSEDED	43.59	[1.716]	11	1-640601-1
SUPERSEDED	39.62	[1.560]	10	1-640601-0
SUPERSEDED	35.66	[1.404]	9	640601-9
SUPERSEDED	31.70	[1.248]	8	640601-8
SUPERSEDED	27.74	[1.092]	7	640601-7
SUPERSEDED	23.77	[.936]	6	640601-6
SUPERSEDED	19.81	[.780]	5	640601-5
SUPERSEDED	15.85	[.624]	4	640601-4
SUPERSEDED	11.89	[.468]	3	640601-3
SUPERSEDED	7.92	[.312]	2	640601-2

- 1 MATERIAL: CONNECTOR - NYLON UL94V-2 (RED).
CONTACTS - 0.30[.012] THICK COPPER ALLOY
(BRIGHT TIN-LEAD 0.00203[.000080] MIN. THICK
FOR CONTACTS 640601-2 THRU 2-640601-4)
(MATTE WHISKER MITIGATED TIN 0.00203[.000080] MIN
THICKNESS OVER NICKEL UNDERPLATE FOR
3-640601-2 THRU 5-640601-4).
- 2 CONTACTS ACCEPT 22 AWG WIRE WITH 2.41[.095] MAX INSULATION DIAMETER.
- 3 CONTACTS MUST ACCEPT 1.14±0.03[.045±.001] SQUARE POST AND REMAIN LOCKED IN POSITION.
- 4 IDENTIFICATION NUMBER FOR LAST CIRCUIT MAY NOT APPEAR ON ALL ASSEMBLIES.
- 5 DIMENSIONS IN BRACKETS ARE IN INCHES.
- 6 HOUSING FEATURES ARE: FEED-THRU WITH LOCKING RAMP.
- 7 OBSOLETE PARTS: OBSOLETE CIS STREAMLINING PER D.RENAUD/D.SINISI
- 8 OBSOLETE PARTS

THIS DRAWING IS A CONTROLLED DOCUMENT.		DWN B. LEWIS 12 FEB 91	TE Connectivity Ltd. MTA-156 CONNECTOR ASSEMBLY, 22 AWG, STANDARD
DIMENSIONS: mm [INCHES]		CHK R. SWING 12 FEB 91	
TOLERANCES UNLESS OTHERWISE SPECIFIED:		APVD D. CLARK 19 FEB 91	RESTRICTED TO
0 PLC ± - 1 PLC ± - 2 PLC ± - 3 PLC ± - 4 PLC ± -		NAME	
ANGLES ± - FINISH		PRODUCT SPEC 108-1051	
MATERIAL		APPLICATION SPEC 114-1020	SIZE A2
		WEIGHT	CAGE CODE 00779
		CUSTOMER DRAWING	DRAWING NO C=640601
		SCALE 4:1	SHEET 1 of 1
		REV V	

X-ON Electronics

Largest Supplier of Electrical and Electronic Components

Click to view similar products for [Headers & Wire Housings](#) category:

Click to view products by [TE Connectivity](#) manufacturer:

Other Similar products are found below :

[892-18-020-10-001101](#) [58102-G61-06LF](#) [582553-1](#) [0009485154](#) [009176003701906](#) [0050291907](#) [LY20-4P-DT1-P1E-BR](#) [02.125.8002.8](#)
[609-3404](#) [61062-3](#) [61082-181009](#) [622-3653LF](#) [63453-116](#) [636-1030](#) [636-1427](#) [636-3427](#) [636-4007](#) [641938-9](#) [641991-4](#) [644827-2](#) [65817-010LF](#) [65817-015LF](#) [65863-015LF](#) [66207-023LF](#) [67095-007LF](#) [67601157](#) [68645-018](#) [68648-049](#) [70.362.1628.0](#) [70-4210](#) [70-4226B](#) [70-4853B](#) [707-5020](#) [707-5028](#) [71.350.2428.0](#) [71918-208LF](#) [71961-016LF](#) [733-134](#) [733-162](#) [754199-000](#) [760-3052](#) [787-8014-00](#) [79531-3000](#)
[FCN-360C032-B](#) [FCN-367T-T012/H](#) [FCN-723D010/2](#) [80.063.4001.1](#) [800-90-001-10-001000](#) [800-90-010-10-002000](#) [801-43-002-10-013000](#)