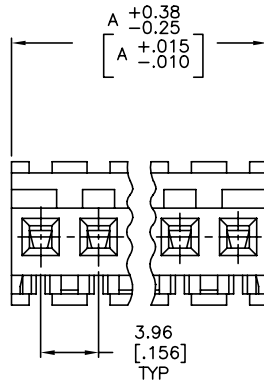
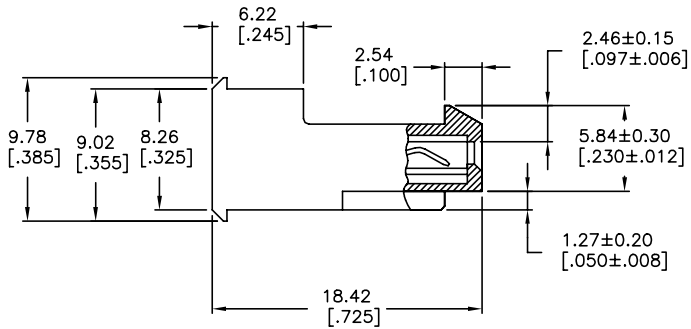
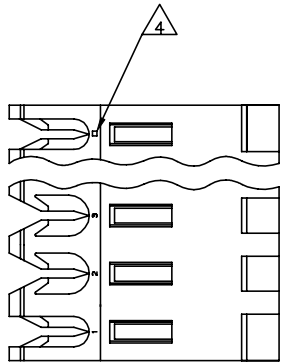


THIS DRAWING IS UNPUBLISHED. RELEASED FOR PUBLICATION  
 © COPYRIGHT - By - TE CONNECTIVITY ALL RIGHTS RESERVED.

REVISIONS					
P	LTN	DESCRIPTION	DATE	DMN	APVD
V		REVISED PER ECR-20-000822	27MAY2020	PC	SW



95.10	[3.744]	24	5-640601-4
91.14	[3.588]	23	5-640601-3
87.17	[3.432]	22	5-640601-2
83.21	[3.276]	21	5-640601-1
79.25	[3.120]	20	5-640601-0
75.29	[2.964]	19	4-640601-9
71.32	[2.808]	18	4-640601-8
67.36	[2.652]	17	4-640601-7
63.40	[2.496]	16	4-640601-6
59.44	[2.340]	15	4-640601-5
55.47	[2.184]	14	4-640601-4
51.51	[2.028]	13	4-640601-3
47.55	[1.872]	12	4-640601-2
43.59	[1.716]	11	4-640601-1
39.62	[1.560]	10	4-640601-0
35.66	[1.404]	9	3-640601-9
31.70	[1.248]	8	3-640601-8
27.74	[1.092]	7	3-640601-7
23.77	[.936]	6	3-640601-6
19.81	[.780]	5	3-640601-5
15.85	[.624]	4	3-640601-4
11.89	[.468]	3	3-640601-3
7.92	[.312]	2	3-640601-2
<b>OBSOLETE</b>	95.10 [3.744]	24	<del>2-640601-4</del>
<b>SUPERSEDED</b>	91.14 [3.588]	23	<del>2-640601-3</del>
<b>SUPERSEDED</b>	87.17 [3.432]	22	<del>2-640601-2</del>
<b>SUPERSEDED</b>	83.21 [3.276]	21	<del>2-640601-1</del>
<b>SUPERSEDED</b>	79.25 [3.120]	20	<del>2-640601-0</del>
<b>SUPERSEDED</b>	75.29 [2.964]	19	<del>1-640601-9</del>
<b>SUPERSEDED</b>	71.32 [2.808]	18	<del>1-640601-8</del>
<b>SUPERSEDED</b>	67.36 [2.652]	17	<del>1-640601-7</del>
<b>SUPERSEDED</b>	63.40 [2.496]	16	<del>1-640601-6</del>
<b>OBSOLETE</b>	59.44 [2.340]	15	<del>1-640601-5</del>
<b>SUPERSEDED</b>	55.47 [2.184]	14	<del>1-640601-4</del>
<b>SUPERSEDED</b>	51.51 [2.028]	13	<del>1-640601-3</del>
<b>SUPERSEDED</b>	47.55 [1.872]	12	<del>1-640601-2</del>
<b>SUPERSEDED</b>	43.59 [1.716]	11	<del>1-640601-1</del>
<b>SUPERSEDED</b>	39.62 [1.560]	10	<del>1-640601-0</del>
<b>SUPERSEDED</b>	35.66 [1.404]	9	<del>640601-9</del>
<b>SUPERSEDED</b>	31.70 [1.248]	8	<del>640601-8</del>
<b>SUPERSEDED</b>	27.74 [1.092]	7	<del>640601-7</del>
<b>SUPERSEDED</b>	23.77 [.936]	6	<del>640601-6</del>
<b>SUPERSEDED</b>	19.81 [.780]	5	<del>640601-5</del>
<b>SUPERSEDED</b>	15.85 [.624]	4	<del>640601-4</del>
<b>SUPERSEDED</b>	11.89 [.468]	3	<del>640601-3</del>
<b>SUPERSEDED</b>	7.92 [.312]	2	<del>640601-2</del>

- 1 MATERIAL: CONNECTOR - NYLON UL94V-2 (RED).  
CONTACTS - 0.30[.012] THICK COPPER ALLOY  
(BRIGHT TIN-LEAD 0.00203[.000080] MIN. THICK  
FOR CONTACTS 640601-2 THRU 2-640601-4)  
(MATTE WHISKER MITIGATED TIN 0.00203[.000080] MIN  
THICKNESS OVER NICKEL UNDERPLATE FOR  
3-640601-2 THRU 5-640601-4).
- 2 CONTACTS ACCEPT 22 AWG WIRE WITH 2.41[.095] MAX INSULATION DIAMETER.
- 3 CONTACTS MUST ACCEPT 1.14±0.03[.045±.001] SQUARE POST AND REMAIN LOCKED IN POSITION.
- 4 IDENTIFICATION NUMBER FOR LAST CIRCUIT MAY NOT APPEAR ON ALL ASSEMBLIES.
- 5 DIMENSIONS IN BRACKETS ARE IN INCHES.
- 6 HOUSING FEATURES ARE: FEED-THRU WITH LOCKING RAMP.
- 7 OBSOLETE PARTS: OBSOLETE CIS STREAMLINING PER D.RENAUD/D.SINISI
- 8 OBSOLETE PARTS

THIS DRAWING IS A CONTROLLED DOCUMENT. DWG: B. LEWIS 12 FEB 91  
 CHK: R. SWING 12 FEB 91  
 APVD: D. CLARK 19 FEB 91

TE Connectivity Ltd.

MTA-156 CONNECTOR ASSEMBLY,  
22 AWG, STANDARD

SIZE: A2 CAGE CODE: 00779 DRAWING NO: 640601 RESTRICTED TO: -  
 WEIGHT: 114-1020 SCALE: 4:1 SHEET: 1 OF 1 REV: V

CUSTOMER DRAWING

## X-ON Electronics

Largest Supplier of Electrical and Electronic Components

*Click to view similar products for [Headers & Wire Housings](#) category:*

*Click to view products by [TE Connectivity](#) manufacturer:*

Other Similar products are found below :

[892-18-020-10-001101](#) [58102-G61-06LF](#) [582553-1](#) [0009485154](#) [009176003701906](#) [0050291907](#) [LY20-4P-DT1-P1E-BR](#) [02.125.8002.8](#)  
[609-3404](#) [61062-3](#) [61082-181009](#) [622-3653LF](#) [63453-116](#) [636-1030](#) [636-1427](#) [636-3427](#) [636-4007](#) [641938-9](#) [641991-4](#) [644827-2](#) [65817-](#)  
[010LF](#) [65817-015LF](#) [65863-015LF](#) [66207-023LF](#) [67095-007LF](#) [67601157](#) [68645-018](#) [68648-049](#) [70.362.1628.0](#) [70-4210](#) [70-4226B](#) [70-](#)  
[4853B](#) [707-5020](#) [707-5028](#) [71.350.2428.0](#) [71918-208LF](#) [71961-016LF](#) [733-134](#) [733-162](#) [754199-000](#) [760-3052](#) [787-8014-00](#) [79531-3000](#)  
[FCN-360C032-B](#) [FCN-367T-T012/H](#) [FCN-723D010/2](#) [80.063.4001.1](#) [800-90-001-10-001000](#) [800-90-010-10-002000](#) [801-43-002-10-013000](#)