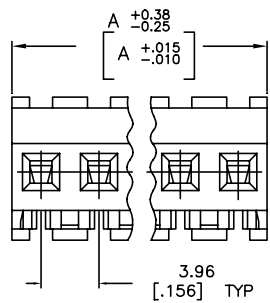
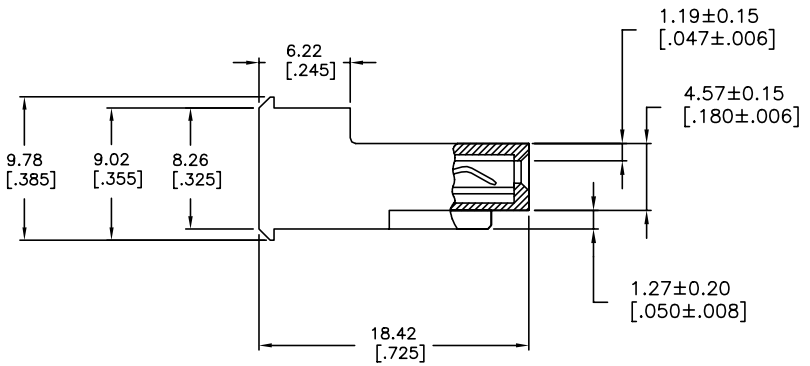
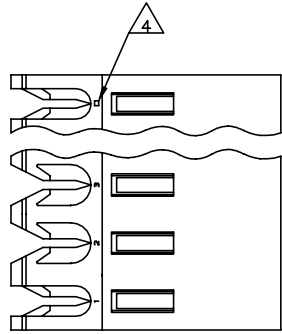


THIS DRAWING IS UNPUBLISHED. RELEASED FOR PUBLICATION
 © COPYRIGHT - By - TE CONNECTIVITY ALL RIGHTS RESERVED.

LOC	DIST	REVISIONS				
P	LTR	DESCRIPTION	DATE	DN	APD	
CM	54	V	REVISED PER ECR-20-000814	26MAY2020	PC SW	



95.10	[3.744]	24	5-640604-4
91.14	[3.588]	23	5-640604-3
87.17	[3.432]	22	5-640604-2
83.21	[3.276]	21	5-640604-1
79.25	[3.120]	20	5-640604-0
75.29	[2.964]	19	4-640604-9
71.32	[2.808]	18	4-640604-8
67.36	[2.652]	17	4-640604-7
63.40	[2.496]	16	4-640604-6
59.44	[2.340]	15	4-640604-5
55.47	[2.184]	14	4-640604-4
51.51	[2.028]	13	4-640604-3
47.55	[1.872]	12	4-640604-2
43.59	[1.716]	11	4-640604-1
39.62	[1.560]	10	4-640604-0
35.66	[1.404]	9	3-640604-9
31.70	[1.248]	8	3-640604-8
27.74	[1.092]	7	3-640604-7
23.77	[.936]	6	3-640604-6
19.81	[.780]	5	3-640604-5
15.85	[.624]	4	3-640604-4
11.89	[.468]	3	3-640604-3
7.92	[.312]	2	3-640604-2
95.10	[3.744]	24	2-640604-4
91.14	[3.588]	23	2-640604-3
87.17	[3.432]	22	2-640604-2
83.21	[3.276]	21	2-640604-1
79.25	[3.120]	20	2-640604-0
75.29	[2.964]	19	1-640604-9
71.32	[2.808]	18	1-640604-8
67.36	[2.652]	17	1-640604-7
63.40	[2.496]	16	1-640604-6
59.44	[2.340]	15	1-640604-5
55.47	[2.184]	14	1-640604-4
51.51	[2.028]	13	1-640604-3
47.55	[1.872]	12	1-640604-2
43.59	[1.716]	11	1-640604-1
39.62	[1.560]	10	1-640604-0
35.66	[1.404]	9	640604-9
31.70	[1.248]	8	640604-8
27.74	[1.092]	7	640604-7
23.77	[.936]	6	640604-6
19.81	[.780]	5	640604-5
15.85	[.624]	4	640604-4
11.89	[.468]	3	640604-3
7.92	[.312]	2	640604-2

- 1 MATERIAL: CONNECTOR - NYLON UL94V-2 (ORANGE).
CONTACTS - 0.30[.012] THICK COPPER ALLOY (BRIGHT TIN-LEAD 0.00203[.000080] MIN. THICK FOR CONTACTS 640604-2 THRU 2-640604-4) (MATTE WHISKER MITIGATED TIN 0.00203[.000080] MIN THICKNESS OVER NICKEL UNDERPLATE FOR CONTACTS 3-640604-2 THRU 5-640604-4).
- 2 CONTACTS ACCEPT 18 AWG WIRE WITH 2.41[.095] MAX INSULATION DIAMETER.
- 3 CONTACTS MUST ACCEPT 1.14±0.03[.045±.001] SQUARE POST AND REMAIN LOCKED IN POSITION.
- 4 IDENTIFICATION NUMBER FOR LAST CIRCUIT MAY NOT APPEAR ON ALL ASSEMBLIES.
- 5 DIMENSIONS IN BRACKETS ARE IN INCHES.
- 6 HOUSING FEATURES ARE: FEED-THRU WITHOUT LOCKING RAMP.
- 7 OBSOLETE PARTS: OBSOLETE CIS STREAMLINING PER D.RENAUD/D.SINISI
- 8 OBSOLETE PARTS

DIM A	NO OF CIRCUITS	PART NO
7		
8		
9		
10		
11		
12		
13		
14		
15		
16		
17		
18		
19		
20		
21		
22		
23		
24		

THIS DRAWING IS A CONTROLLED DOCUMENT. DWG: B. LEWIS 12FEB91
 CHK: R. SWING 12FEB91
 APD: D. CLARK 19FEB91

TE Connectivity
 MTA-156 CONNECTOR ASSEMBLY, 18 AWG, STANDARD

108-1051
 114-1020

A2 00779 C=640604

CUSTOMER DRAWING SCALE: 4:1 SHEET 1 OF 1 REV V

X-ON Electronics

Largest Supplier of Electrical and Electronic Components

Click to view similar products for [Headers & Wire Housings](#) category:

Click to view products by [TE Connectivity](#) manufacturer:

Other Similar products are found below :

[95000-104TRLF](#) [10135584-644402LF](#) [DF62W-EP2022PCA](#) [95000-106TRLF](#) [DF62W-2022SCA](#) [DF62W-EP2022PC](#) [2203348](#) [DF62W-2022SC](#) [1084018](#) [1029039](#) [1084017](#) [802-10-012-10-002000](#) [1112640](#) [1112639](#) [000-34000](#) [0009482033](#) [0009507031](#) [57102-S06-03LF](#) [57202-S52-04LF](#) [PCN6-15S-2.5E](#) [0039019024](#) [58102-G61-06LF](#) [582553-1](#) [0009508121](#) [0050291907](#) [018731A](#) [LY20-4P-DT1-P1E-BR](#) [02.125.8002.8](#) [60101931](#) [60598-1 \(Cut Strip\)](#) [M1625-3R/100](#) [61062-3](#) [61082-181009](#) [636-1427](#) [638009-1](#) [641938-9](#) [641991-4](#) [644168-1](#) [647662-1](#) [65039-019ELF](#) [65817-002LF](#) [65817-015LF](#) [65863-015LF](#) [66207-023LF](#) [67016-026LF](#) [67046-001LF](#) [67095-007LF](#) [68002-116](#) [68016-236H](#) [68648-049](#)