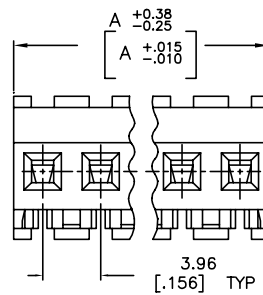
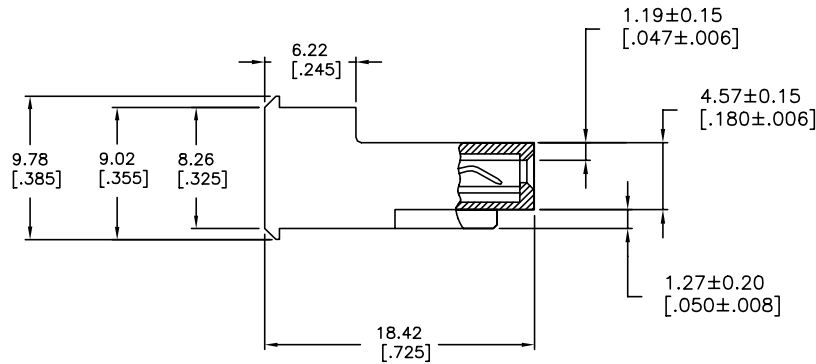
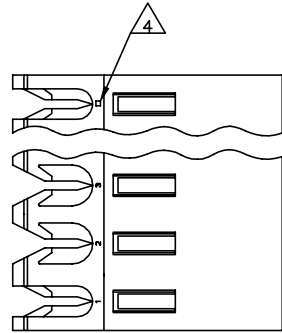


THIS DRAWING IS UNPUBLISHED. RELEASED FOR PUBLICATION  
 © COPYRIGHT - By - TE CONNECTIVITY ALL RIGHTS RESERVED.

LOC		DIST		REVISIONS				
P	LT	REVISED	PER	DESCRIPTION	DATE	DM	APD	
CM	54	W		REVIS PER ECR-20-000822	27MAY2020	PC	SW	



DIM A	NO OF CIRCUITS	PART NO
95.10 [3.744]	24	5-640606-4
91.14 [3.588]	23	5-640606-3
87.17 [3.432]	22	5-640606-2
83.21 [3.276]	21	5-640606-1
79.25 [3.120]	20	5-640606-0
75.29 [2.964]	19	4-640606-9
71.32 [2.808]	18	4-640606-8
67.36 [2.652]	17	4-640606-7
63.40 [2.496]	16	4-640606-6
59.44 [2.340]	15	4-640606-5
55.47 [2.184]	14	4-640606-4
51.51 [2.028]	13	4-640606-3
47.55 [1.872]	12	4-640606-2
43.59 [1.716]	11	4-640606-1
39.62 [1.560]	10	4-640606-0
35.66 [1.404]	9	3-640606-9
31.70 [1.248]	8	3-640606-8
27.74 [1.092]	7	3-640606-7
23.77 [.936]	6	3-640606-6
19.81 [.780]	5	3-640606-5
15.85 [.624]	4	3-640606-4
11.89 [.468]	3	3-640606-3
7.92 [.312]	2	3-640606-2
95.10 [3.744]	24	<del>2-640606-4</del>
91.14 [3.588]	23	<del>2-640606-3</del>
87.17 [3.432]	22	<del>2-640606-2</del>
83.21 [3.276]	21	<del>2-640606-1</del>
79.25 [3.120]	20	<del>2-640606-0</del>
75.29 [2.964]	19	<del>1-640606-9</del>
71.32 [2.808]	18	<del>1-640606-8</del>
67.36 [2.652]	17	<del>1-640606-7</del>
63.40 [2.496]	16	<del>1-640606-6</del>
59.44 [2.340]	15	<del>1-640606-5</del>
55.47 [2.184]	14	<del>1-640606-4</del>
51.51 [2.028]	13	<del>1-640606-3</del>
47.55 [1.872]	12	<del>1-640606-2</del>
43.59 [1.716]	11	<del>1-640606-1</del>
39.62 [1.560]	10	<del>1-640606-0</del>
35.66 [1.404]	9	<del>640606-9</del>
31.70 [1.248]	8	<del>640606-8</del>
27.74 [1.092]	7	<del>640606-7</del>
23.77 [.936]	6	<del>640606-6</del>
19.81 [.780]	5	<del>640606-5</del>
15.85 [.624]	4	<del>640606-4</del>
11.89 [.468]	3	<del>640606-3</del>
7.92 [.312]	2	<del>640606-2</del>

- △ MATERIAL: CONNECTOR - NYLON UL94V-2 (RED).  
CONTACTS - 0.30[.012] THICK COPPER ALLOY  
(BRIGHT TIN-LEAD 0.00203[.000080] MIN. THICK  
FOR CONTACTS 640606-2 THRU 2-640606-4)  
(MATTE WHISKER MITIGATED TIN 0.00203[.000080] MIN  
THICKNESS OVER NICKEL UNDERPLATE FOR  
3-640606-2 THRU 5-640606-4).
- 2 CONTACTS ACCEPT 22 AWG WIRE WITH 2.41[.095] MAX INSULATION DIAMETER.
- 3 CONTACTS MUST ACCEPT 1.14±0.03[.045±.001] SQUARE POST AND REMAIN LOCKED IN POSITION.
- △ IDENTIFICATION NUMBER FOR LAST CIRCUIT MAY NOT APPEAR ON ALL ASSEMBLIES.
- 5 DIMENSIONS IN BRACKETS ARE IN INCHES.
- 6 HOUSING FEATURES ARE: FEED-THRU WITHOUT LOCKING RAMP.
- △ OBSOLETE PARTS: OBSOLETE CIS STREAMLINING PER D.RENAUD/D.SINISI
- △ OBSOLETE PARTS

SUPERSEDED △	95.10 [3.744]	24	<del>2-640606-4</del>
	91.14 [3.588]	23	<del>2-640606-3</del>
	87.17 [3.432]	22	<del>2-640606-2</del>
	83.21 [3.276]	21	<del>2-640606-1</del>
	79.25 [3.120]	20	<del>2-640606-0</del>
	75.29 [2.964]	19	<del>1-640606-9</del>
	71.32 [2.808]	18	<del>1-640606-8</del>
	67.36 [2.652]	17	<del>1-640606-7</del>
	63.40 [2.496]	16	<del>1-640606-6</del>
	59.44 [2.340]	15	<del>1-640606-5</del>
	55.47 [2.184]	14	<del>1-640606-4</del>
	51.51 [2.028]	13	<del>1-640606-3</del>
△	47.55 [1.872]	12	<del>1-640606-2</del>
△	43.59 [1.716]	11	<del>1-640606-1</del>
△	39.62 [1.560]	10	<del>1-640606-0</del>
△	35.66 [1.404]	9	<del>640606-9</del>
△	31.70 [1.248]	8	<del>640606-8</del>
△	27.74 [1.092]	7	<del>640606-7</del>
△	23.77 [.936]	6	<del>640606-6</del>
△	19.81 [.780]	5	<del>640606-5</del>
△	15.85 [.624]	4	<del>640606-4</del>
△	11.89 [.468]	3	<del>640606-3</del>
△	7.92 [.312]	2	<del>640606-2</del>

THIS DRAWING IS A CONTROLLED DOCUMENT. DWG: B. LEWIS 12FEB91  
 CHK: R. SWING 12FEB91  
 APD: D. CLARK 19FEB91

TE Connectivity  
 MTA-156 CONNECTOR ASSEMBLY,  
 22 AWG, STANDARD

PRODUCT SPEC: 108-1051  
 APPLICATION SPEC: 114-1020

MATERIAL: 1  
 FINISH: 1

SIZE: A2 CAGE CODE: W DRAWING NO: 640606 RESTRICTED TO: -  
 WEIGHT: -  
 CUSTOMER DRAWING SCALE: 4:1 SHEET: 1 OF 1 REV: W

## X-ON Electronics

Largest Supplier of Electrical and Electronic Components

*Click to view similar products for [Headers & Wire Housings](#) category:*

*Click to view products by [TE Connectivity](#) manufacturer:*

Other Similar products are found below :

[95000-104TRLF](#) [10135584-644402LF](#) [DF62W-EP2022PCA](#) [95000-106TRLF](#) [DF62W-2022SCA](#) [DF62W-EP2022PC](#) [2203348](#) [DF62W-2022SC](#) [1084018](#) [1029039](#) [1084017](#) [802-10-012-10-002000](#) [1112640](#) [1112639](#) [000-34000](#) [0009482033](#) [0009507031](#) [57102-S06-03LF](#) [57202-S52-04LF](#) [PCN6-15S-2.5E](#) [0039019024](#) [58102-G61-06LF](#) [582553-1](#) [0009508121](#) [0050291907](#) [018731A](#) [LY20-4P-DT1-P1E-BR](#) [02.125.8002.8](#) [60101931](#) [60598-1 \(Cut Strip\)](#) [M1625-3R/100](#) [61062-3](#) [61082-181009](#) [636-1427](#) [638009-1](#) [641938-9](#) [641991-4](#) [644168-1](#) [647662-1](#) [65039-019ELF](#) [65817-002LF](#) [65817-015LF](#) [65863-015LF](#) [66207-023LF](#) [67016-026LF](#) [67046-001LF](#) [67095-007LF](#) [68002-116](#) [68016-236H](#) [68648-049](#)