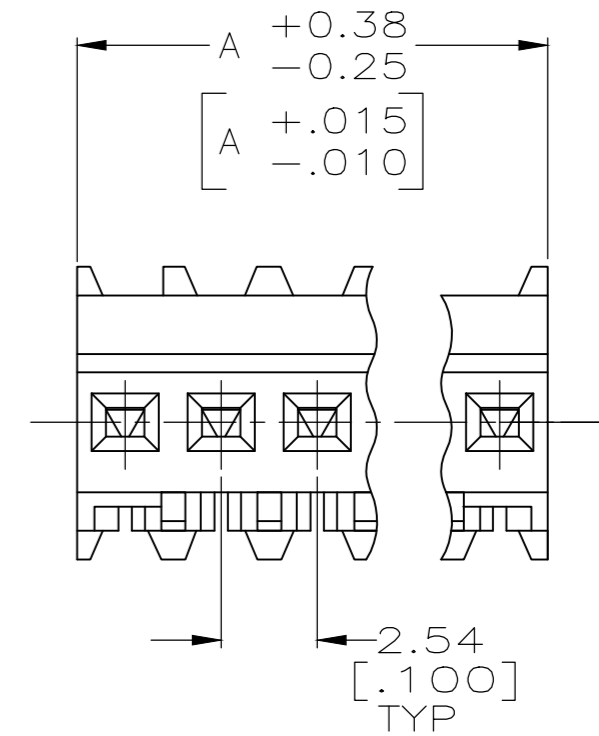
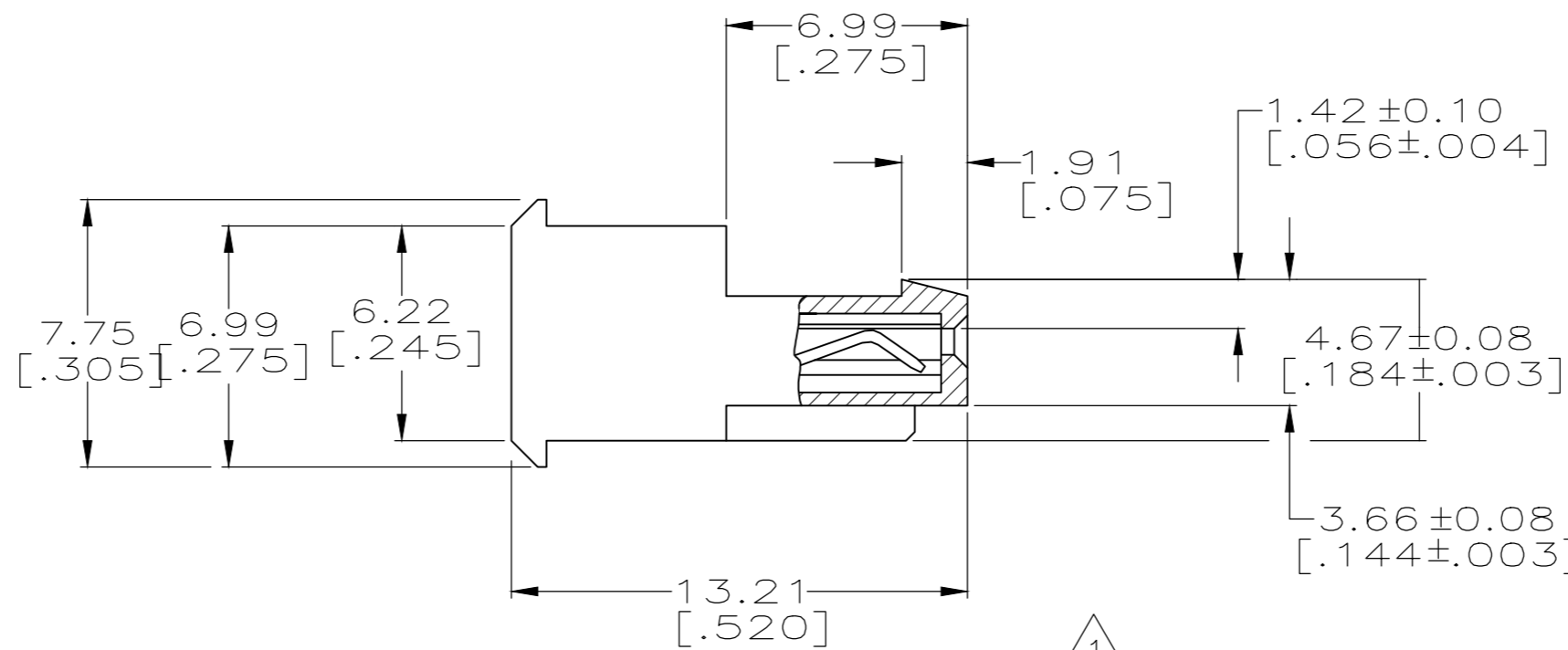
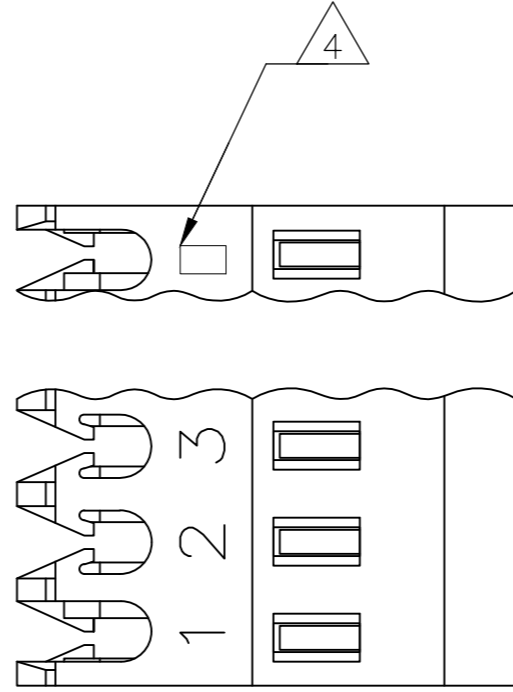


THIS DRAWING IS UNPUBLISHED. RELEASED FOR PUBLICATION  
 © COPYRIGHT - By - TE CONNECTIVITY ALL RIGHTS RESERVED.

LOC	DIST	REVISIONS					
CM	00	P	LTR	DESCRIPTION	DATE	DWN	APVD
		T		REVISED PER ECR-20-000541	15MAY2020	PC	SW



- 1 MATERIAL: CONNECTOR - NYLON UL94V-2. (RED)  
CONTACTS - 0.30[.012] THICK COPPER ALLOY  
BRIGHT TIN-LEAD .00203[.000080] MIN THICKNESS  
FOR 640620-2 THRU 2-640620-8.  
MATTE WHISKER MITIGATED TIN .00203[.000080] MIN THICKNESS OVER  
NICKEL UNDERPLATE FOR 3-640620-2 THRU 5-640620-8.
- 2 CONTACTS ACCEPT 22 AWG WIRE WITH 1.52[.060] MAX  
INSULATION DIAMETER.
- 3 CONTACTS MUST ACCEPT 0.64#0.03[.025# .762]  
POST AND REMAIN LOCKED IN POSITION.
- 4 IDENTIFICATION NUMBER FOR LAST CIRCUIT MAY  
NOT APPEAR ON ALL ASSEMBLIES.
- 5 DIMENSIONS IN BRACKETS ARE IN INCHES.
- 6 HOUSING FEATURES ARE: FEED THRU WITH LOCKING  
RAMP.
- 7 OBSOLETE PARTS: OBSOLETE CIS STREAMLINING PER D.RENAUD/D.SINISI
- 8 OBSOLETE PARTS

YES	DIM A	NO. OF CIRCUITS	PART NO.
YES	71.12[2.800]	28	5-640620-8
YES	68.58[2.700]	27	5-640620-7
YES	66.04[2.600]	26	5-640620-6
YES	63.50[2.500]	25	5-640620-5
YES	60.96[2.400]	24	5-640620-4
YES	58.42[2.300]	23	5-640620-3
YES	55.88[2.200]	22	5-640620-2
YES	53.34[2.100]	21	5-640620-1
YES	50.80[2.000]	20	5-640620-0
YES	48.26[1.900]	19	4-640620-9
YES	45.72[1.800]	18	4-640620-8
YES	43.18[1.700]	17	4-640620-7
YES	40.64[1.600]	16	4-640620-6
YES	38.10[1.500]	15	4-640620-5
YES	35.56[1.400]	14	4-640620-4
YES	33.02[1.300]	13	4-640620-3
YES	30.48[1.200]	12	4-640620-2
YES	27.94[1.100]	11	4-640620-1
YES	25.40[1.000]	10	4-640620-0
YES	22.86[.900]	9	3-640620-9
YES	20.32[.800]	8	3-640620-8
YES	17.78[.700]	7	3-640620-7
YES	15.24[.600]	6	3-640620-6
YES	12.70[.500]	5	3-640620-5
YES	10.16[.400]	4	3-640620-4
YES	7.62[.300]	3	3-640620-3
YES	5.08[.200]	2	3-640620-2

NO	DIM A	NO. OF CIRCUITS	PART NO.	STATUS	REASON
NO	71.12[2.800]	28	<del>2-640620-8</del>	SUPERSEDED	
NO	68.58[2.700]	27	<del>2-640620-7</del>	SUPERSEDED	
NO	66.04[2.600]	26	<del>2-640620-6</del>	SUPERSEDED	
NO	63.50[2.500]	25	<del>2-640620-5</del>	SUPERSEDED	
NO	60.96[2.400]	24	<del>2-640620-4</del>	SUPERSEDED	
NO	58.42[2.300]	23	<del>2-640620-3</del>	SUPERSEDED	
NO	55.88[2.200]	22	<del>2-640620-2</del>	SUPERSEDED	
NO	53.34[2.100]	21	<del>2-640620-1</del>	SUPERSEDED	
NO	50.80[2.000]	20	<del>2-640620-0</del>	SUPERSEDED	
NO	48.26[1.900]	19	<del>1-640620-9</del>	SUPERSEDED	8
NO	45.72[1.800]	18	<del>1-640620-8</del>	SUPERSEDED	7
NO	43.18[1.700]	17	<del>1-640620-7</del>	OBSOLETE	
NO	40.64[1.600]	16	<del>1-640620-6</del>	SUPERSEDED	8
NO	38.10[1.500]	15	<del>1-640620-5</del>	SUPERSEDED	7
NO	35.56[1.400]	14	<del>1-640620-4</del>	SUPERSEDED	7
NO	33.02[1.300]	13	<del>1-640620-3</del>	SUPERSEDED	8
NO	30.48[1.200]	12	<del>1-640620-2</del>	SUPERSEDED	8
NO	27.94[1.100]	11	<del>1-640620-1</del>	SUPERSEDED	7
NO	25.40[1.000]	10	<del>1-640620-0</del>	SUPERSEDED	8
NO	22.86[.900]	9	<del>640620-9</del>	SUPERSEDED	8
NO	20.32[.800]	8	<del>640620-8</del>	SUPERSEDED	7
NO	17.78[.700]	7	<del>640620-7</del>	SUPERSEDED	7
NO	15.24[.600]	6	<del>640620-6</del>	SUPERSEDED	8
NO	12.70[.500]	5	<del>640620-5</del>	SUPERSEDED	8
NO	10.16[.400]	4	<del>640620-4</del>	SUPERSEDED	8
NO	7.62[.300]	3	<del>640620-3</del>	SUPERSEDED	8
NO	5.08[.200]	2	<del>640620-2</del>	SUPERSEDED	8

LEADFREE	DIM A	NO. OF CIRCUITS	PART NO.
YES	71.12[2.800]	28	5-640620-8

THIS DRAWING IS A CONTROLLED DOCUMENT.		DWN S. CARPENTER 11JUN2003		TE Connectivity	
DIMENSIONS: mm [INCHES]		CHK D. BOSSI 11JUN2003		NAME	
TOLERANCES UNLESS OTHERWISE SPECIFIED:		APVD D. BOSSI 11JUN2003	MTA 100 CONNECTOR ASSEMBLY, 22 AWG, STANDARD		
0 PLC ± -		PRODUCT SPEC	SIZE	CAGE CODE	DRAWING NO
1 PLC ± -		APPLICATION SPEC	A2	00779	C=640620
2 PLC ± -		108-1050	RESTRICTED TO		
3 PLC ± 0.13 [.005]		114-1019	SCALE 5:1 SHEET 1 OF 1 REV T		
4 PLC ± -		WEIGHT			
ANGLES ± -		CUSTOMER DRAWING			
FINISH					

## X-ON Electronics

Largest Supplier of Electrical and Electronic Components

*Click to view similar products for [Headers & Wire Housings](#) category:*

*Click to view products by [TE Connectivity](#) manufacturer:*

Other Similar products are found below :

[95000-104TRLF](#) [10135584-644402LF](#) [DF62W-EP2022PCA](#) [95000-106TRLF](#) [DF62W-2022SCA](#) [DF62W-EP2022PC](#) [2203348](#) [DF62W-2022SC](#) [1084018](#) [1029039](#) [1084017](#) [802-10-012-10-002000](#) [1112640](#) [1112639](#) [000-34000](#) [0009482033](#) [0009507031](#) [57102-S06-03LF](#) [57202-S52-04LF](#) [PCN6-15S-2.5E](#) [0039019024](#) [58102-G61-06LF](#) [582553-1](#) [0009508121](#) [0050291907](#) [018731A](#) [LY20-4P-DT1-P1E-BR](#) [02.125.8002.8](#) [60101931](#) [60598-1 \(Cut Strip\)](#) [M1625-3R/100](#) [61062-3](#) [61082-181009](#) [636-1427](#) [638009-1](#) [641938-9](#) [641991-4](#) [644168-1](#) [647662-1](#) [65039-019ELF](#) [65817-002LF](#) [65817-015LF](#) [65863-015LF](#) [66207-023LF](#) [67016-026LF](#) [67046-001LF](#) [67095-007LF](#) [68002-116](#) [68016-236H](#) [68648-049](#)