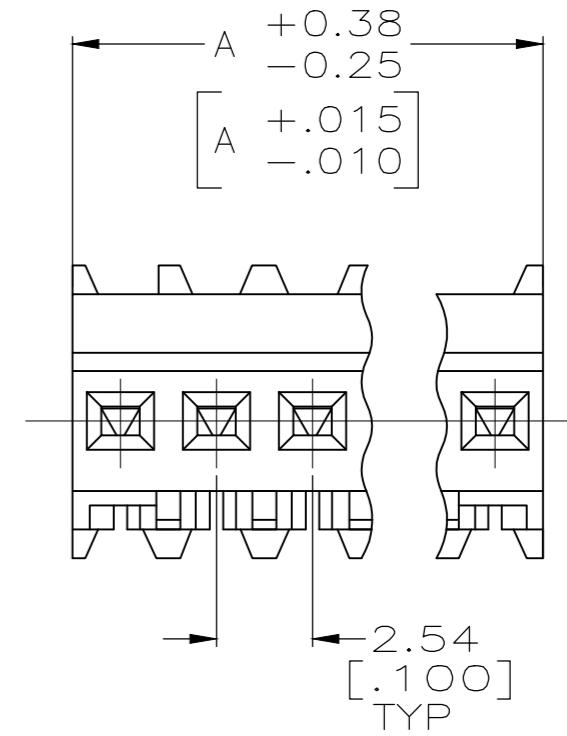
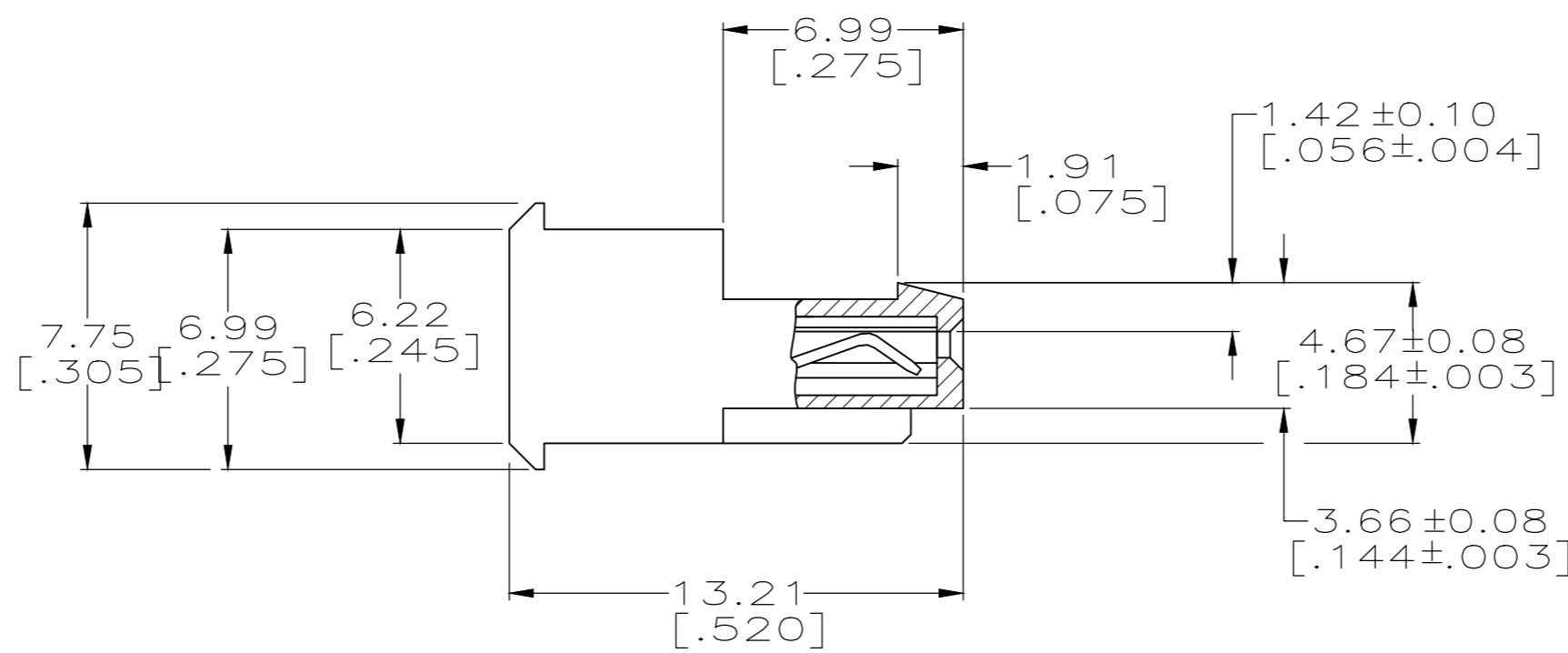
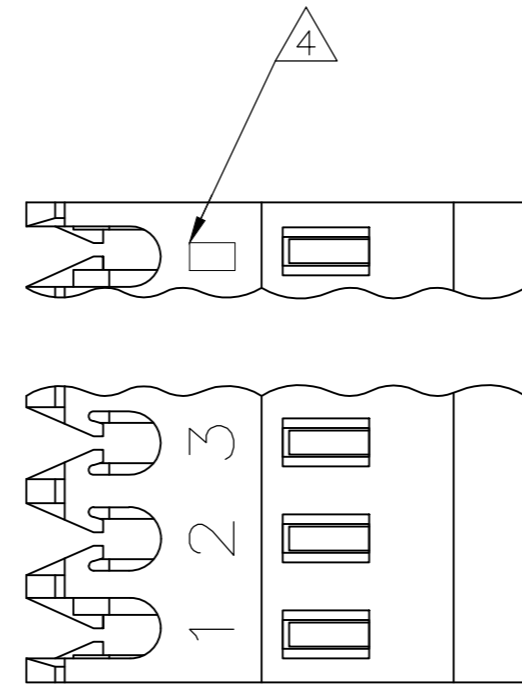


THIS DRAWING IS UNPUBLISHED. RELEASED FOR PUBLICATION  
 © COPYRIGHT - By - ALL RIGHTS RESERVED.

| LOC |  | DIST |  | REVISIONS |     |                           |           |     |      |
|-----|--|------|--|-----------|-----|---------------------------|-----------|-----|------|
| CM  |  | 00   |  | P         | LTR | DESCRIPTION               | DATE      | DWN | APVD |
|     |  |      |  | W         |     | REVISED PER ECR-20-000721 | 04MAR2020 | PC  | SW   |

|     |              |    |            |
|-----|--------------|----|------------|
| YES | 71.12[2.800] | 28 | 5-640621-8 |
| YES | 68.58[2.700] | 27 | 5-640621-7 |
| YES | 66.04[2.600] | 26 | 5-640621-6 |
| YES | 63.50[2.500] | 25 | 5-640621-5 |
| YES | 60.96[2.400] | 24 | 5-640621-4 |
| YES | 58.42[2.300] | 23 | 5-640621-3 |
| YES | 55.88[2.200] | 22 | 5-640621-2 |
| YES | 53.34[2.100] | 21 | 5-640621-1 |
| YES | 50.80[2.000] | 20 | 5-640621-0 |
| YES | 48.26[1.900] | 19 | 4-640621-9 |
| YES | 45.72[1.800] | 18 | 4-640621-8 |
| YES | 43.18[1.700] | 17 | 4-640621-7 |
| YES | 40.64[1.600] | 16 | 4-640621-6 |
| YES | 38.10[1.500] | 15 | 4-640621-5 |
| YES | 35.56[1.400] | 14 | 4-640621-4 |
| YES | 33.02[1.300] | 13 | 4-640621-3 |
| YES | 30.48[1.200] | 12 | 4-640621-2 |
| YES | 27.94[1.100] | 11 | 4-640621-1 |
| YES | 25.40[1.000] | 10 | 4-640621-0 |
| YES | 22.86[.900]  | 9  | 3-640621-9 |
| YES | 20.32[.800]  | 8  | 3-640621-8 |
| YES | 17.78[.700]  | 7  | 3-640621-7 |
| YES | 15.24[.600]  | 6  | 3-640621-6 |
| YES | 12.70[.500]  | 5  | 3-640621-5 |
| YES | 10.16[.400]  | 4  | 3-640621-4 |
| YES | 7.62[.300]   | 3  | 3-640621-3 |
| YES | 5.08[.200]   | 2  | 3-640621-2 |



|    |              |    |            |                          |
|----|--------------|----|------------|--------------------------|
| NO | 71.12[2.800] | 28 | 2-640621-8 | SUPERSEDED BY 5-640621-8 |
| NO | 68.58[2.700] | 27 | 2-640621-7 | SUPERSEDED BY 5-640621-7 |
| NO | 66.04[2.600] | 26 | 2-640621-6 | SUPERSEDED BY 5-640621-6 |
| NO | 63.50[2.500] | 25 | 2-640621-5 | SUPERSEDED BY 5-640621-5 |
| NO | 60.96[2.400] | 24 | 2-640621-4 | SUPERSEDED BY 5-640621-4 |
| NO | 58.42[2.300] | 23 | 2-640621-3 | SUPERSEDED BY 5-640621-3 |
| NO | 55.88[2.200] | 22 | 2-640621-2 | SUPERSEDED BY 5-640621-2 |
| NO | 53.34[2.100] | 21 | 2-640621-1 | SUPERSEDED BY 5-640621-1 |
| NO | 50.80[2.000] | 20 | 2-640621-0 | SUPERSEDED BY 5-640621-0 |
| NO | 48.26[1.900] | 19 | 1-640621-9 | SUPERSEDED BY 4-640621-9 |
| NO | 45.72[1.800] | 18 | 1-640621-8 | SUPERSEDED BY 4-640621-8 |
| NO | 43.18[1.700] | 17 | 1-640621-7 | SUPERSEDED BY 4-640621-7 |
| NO | 40.64[1.600] | 16 | 1-640621-6 | SUPERSEDED BY 4-640621-6 |
| NO | 38.10[1.500] | 15 | 1-640621-5 | SUPERSEDED BY 4-640621-5 |
| NO | 35.56[1.400] | 14 | 1-640621-4 | SUPERSEDED BY 4-640621-4 |
| NO | 33.02[1.300] | 13 | 1-640621-3 | SUPERSEDED BY 4-640621-3 |
| NO | 30.48[1.200] | 12 | 1-640621-2 | SUPERSEDED BY 4-640621-2 |
| NO | 27.94[1.100] | 11 | 1-640621-1 | SUPERSEDED BY 4-640621-1 |
| NO | 25.40[1.000] | 10 | 1-640621-0 | SUPERSEDED BY 4-640621-0 |
| NO | 22.86[.900]  | 9  | -640621-9  | SUPERSEDED BY 3-640621-9 |
| NO | 20.32[.800]  | 8  | -640621-8  | SUPERSEDED BY 3-640621-8 |
| NO | 17.78[.700]  | 7  | -640621-7  | SUPERSEDED BY 3-640621-7 |
| NO | 15.24[.600]  | 6  | -640621-6  | SUPERSEDED BY 3-640621-6 |
| NO | 12.70[.500]  | 5  | -640621-5  | SUPERSEDED BY 3-640621-5 |
| NO | 10.16[.400]  | 4  | -640621-4  | SUPERSEDED BY 3-640621-4 |
| NO | 7.62[.300]   | 3  | -640621-3  | SUPERSEDED BY 3-640621-3 |
| NO | 5.08[.200]   | 2  | -640621-2  | SUPERSEDED BY 3-640621-2 |

- 1 MATERIAL: CONNECTOR - NYLON UL94V-2 (WHITE).  
CONTACTS - 0.30[.012] THICK COPPER ALLOY  
BRIGHT TIN-LEAD .00203[.000080] MIN THICKNESS  
FOR 640621-2 THRU 2-640621-8.  
MATTE WHISKER MITIGATED TIN .00203[.000080] MIN THICKNESS  
OVER NICKEL UNDERPLATE FOR 3-640621-2 THRU 5-640621-8.
- 2. CONTACTS ACCEPT 24 AWG WIRE WITH 1.52[.060] MAX INSULATION DIAMETER.
- 3. CONTACTS MUST ACCEPT 0.64±0.03[.025] POST AND REMAIN LOCKED IN POSITION.
- 4 IDENTIFICATION NUMBER FOR LAST CIRCUIT MAY NOT APPEAR ON ALL ASSEMBLIES.
- 5. DIMENSIONS IN BRACKETS ARE IN INCHES.
- 6. HOUSING FEATURES ARE: FEED THRU WITH LOCKING RAMP.
- 7 OBSOLETE PARTS: OBSOLETE CIS STREAMLINING PER D.RENAUD/D.SINISI
- 8 OBSOLETE PARTS

|   |  |                                  |   |                    |
|---|--|----------------------------------|---|--------------------|
| THIS DRAWING IS A CONTROLLED DOCUMENT.                                      |  | DWN<br>S. CARPENTER<br>11JUN2003 | TE Connectivity                                 |                    |
| DIMENSIONS:<br>mm [INCHES]  |  | CHK<br>D. BOSSI<br>11JUN2003     |   |                    |
| TOLERANCES UNLESS OTHERWISE SPECIFIED:                                      |  | APVD<br>D. BOSSI<br>11JUN2003    | NAME  |                    |
| 0 PLC ±<br>1 PLC ±<br>2 PLC ±<br>3 PLC ± 0.13 [.005]<br>4 PLC ±<br>ANGLES ± |  | PRODUCT SPEC<br>108-1050         | MTA-100 CONNECTOR ASSEMBLY,<br>24 AWG, STANDARD |                    |
| MATERIAL 1  |  | FINISH 1                         | SIZE<br>A2                                      | CAGE CODE<br>00779 |
| CUSTOMER DRAWING  |  | WEIGHT                           | DRAWING NO<br>C=640621                          | RESTRICTED TO<br>- |
| SCALE 5:1   |  | SHEET 1 of 1                     | REV W   |                    |

## X-ON Electronics

Largest Supplier of Electrical and Electronic Components

*Click to view similar products for [Headers & Wire Housings](#) category:*

*Click to view products by [TE Connectivity](#) manufacturer:*

Other Similar products are found below :

[95000-104TRLF](#) [10135584-644402LF](#) [DF62W-EP2022PCA](#) [95000-106TRLF](#) [DF62W-2022SCA](#) [DF62W-EP2022PC](#) [2203348](#) [DF62W-2022SC](#) [1084018](#) [1029039](#) [1084017](#) [802-10-012-10-002000](#) [1112640](#) [1112639](#) [000-34000](#) [0009482033](#) [0009507031](#) [57102-S06-03LF](#) [57202-S52-04LF](#) [PCN6-15S-2.5E](#) [0039019024](#) [58102-G61-06LF](#) [582553-1](#) [0009508121](#) [0050291907](#) [018731A](#) [LY20-4P-DT1-P1E-BR](#) [02.125.8002.8](#) [60101931](#) [60598-1 \(Cut Strip\)](#) [M1625-3R/100](#) [61062-3](#) [61082-181009](#) [636-1427](#) [638009-1](#) [641938-9](#) [641991-4](#) [644168-1](#) [647662-1](#) [65039-019ELF](#) [65817-002LF](#) [65817-015LF](#) [65863-015LF](#) [66207-023LF](#) [67016-026LF](#) [67046-001LF](#) [67095-007LF](#) [68002-116](#) [68016-236H](#) [68648-049](#)