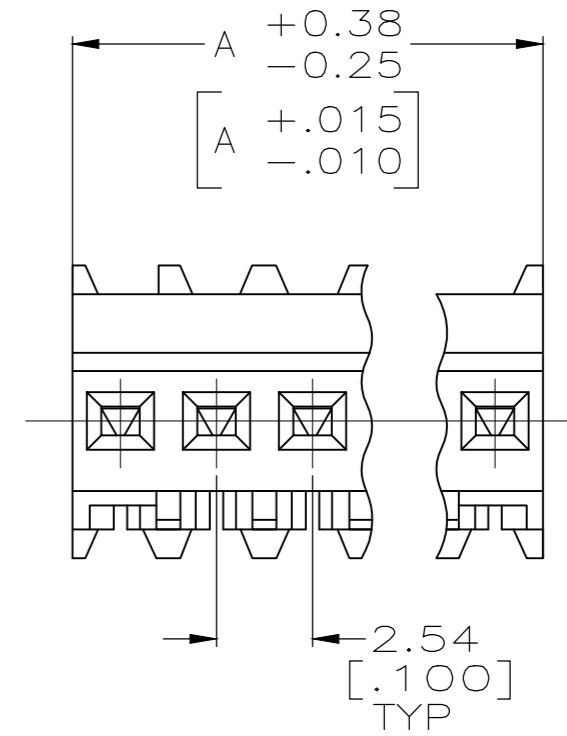
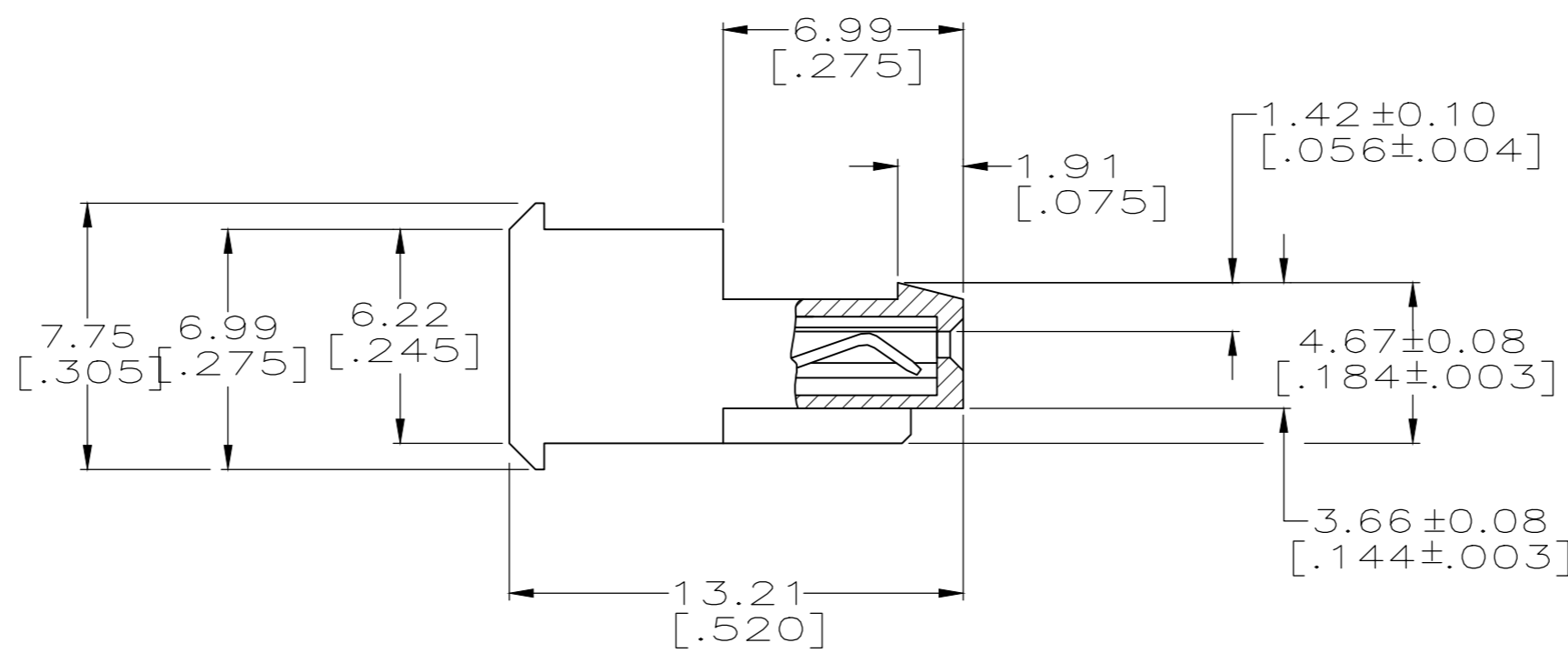
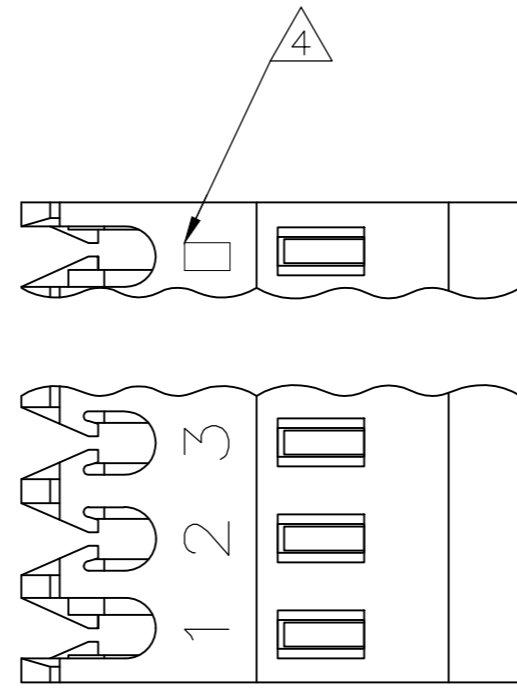


THIS DRAWING IS UNPUBLISHED. RELEASED FOR PUBLICATION  
 © COPYRIGHT - By - ALL RIGHTS RESERVED.

| LOC |     | DIST        |                           | REVISIONS |     |      |  |
|-----|-----|-------------|---------------------------|-----------|-----|------|--|
| P   | LTR | DESCRIPTION |                           | DATE      | DWN | APVD |  |
| CM  | 00  | W           | REVISED PER ECR-20-000721 | 04MAR2020 | PC  | SW   |  |



| YES | DIM A        | NO. OF CIRCUITS | PART NO.   |
|-----|--------------|-----------------|------------|
| YES | 71.12[2.800] | 28              | 5-640621-8 |
| YES | 68.58[2.700] | 27              | 5-640621-7 |
| YES | 66.04[2.600] | 26              | 5-640621-6 |
| YES | 63.50[2.500] | 25              | 5-640621-5 |
| YES | 60.96[2.400] | 24              | 5-640621-4 |
| YES | 58.42[2.300] | 23              | 5-640621-3 |
| YES | 55.88[2.200] | 22              | 5-640621-2 |
| YES | 53.34[2.100] | 21              | 5-640621-1 |
| YES | 50.80[2.000] | 20              | 5-640621-0 |
| YES | 48.26[1.900] | 19              | 4-640621-9 |
| YES | 45.72[1.800] | 18              | 4-640621-8 |
| YES | 43.18[1.700] | 17              | 4-640621-7 |
| YES | 40.64[1.600] | 16              | 4-640621-6 |
| YES | 38.10[1.500] | 15              | 4-640621-5 |
| YES | 35.56[1.400] | 14              | 4-640621-4 |
| YES | 33.02[1.300] | 13              | 4-640621-3 |
| YES | 30.48[1.200] | 12              | 4-640621-2 |
| YES | 27.94[1.100] | 11              | 4-640621-1 |
| YES | 25.40[1.000] | 10              | 4-640621-0 |
| YES | 22.86[.900]  | 9               | 3-640621-9 |
| YES | 20.32[.800]  | 8               | 3-640621-8 |
| YES | 17.78[.700]  | 7               | 3-640621-7 |
| YES | 15.24[.600]  | 6               | 3-640621-6 |
| YES | 12.70[.500]  | 5               | 3-640621-5 |
| YES | 10.16[.400]  | 4               | 3-640621-4 |
| YES | 7.62[.300]   | 3               | 3-640621-3 |
| YES | 5.08[.200]   | 2               | 3-640621-2 |

|    |              |    |            |                          |
|----|--------------|----|------------|--------------------------|
| NO | 71.12[2.800] | 28 | 2-640621-8 | SUPERSEDED BY 5-640621-8 |
| NO | 68.58[2.700] | 27 | 2-640621-7 | SUPERSEDED BY 5-640621-7 |
| NO | 66.04[2.600] | 26 | 2-640621-6 | SUPERSEDED BY 5-640621-6 |
| NO | 63.50[2.500] | 25 | 2-640621-5 | SUPERSEDED BY 5-640621-5 |
| NO | 60.96[2.400] | 24 | 2-640621-4 | SUPERSEDED BY 5-640621-4 |
| NO | 58.42[2.300] | 23 | 2-640621-3 | SUPERSEDED BY 5-640621-3 |
| NO | 55.88[2.200] | 22 | 2-640621-2 | SUPERSEDED BY 5-640621-2 |
| NO | 53.34[2.100] | 21 | 2-640621-1 | SUPERSEDED BY 5-640621-1 |
| NO | 50.80[2.000] | 20 | 2-640621-0 | SUPERSEDED BY 5-640621-0 |
| NO | 48.26[1.900] | 19 | 1-640621-9 | SUPERSEDED BY 4-640621-9 |
| NO | 45.72[1.800] | 18 | 1-640621-8 | SUPERSEDED BY 4-640621-8 |
| NO | 43.18[1.700] | 17 | 1-640621-7 | SUPERSEDED BY 4-640621-7 |
| NO | 40.64[1.600] | 16 | 1-640621-6 | SUPERSEDED BY 4-640621-6 |
| NO | 38.10[1.500] | 15 | 1-640621-5 | SUPERSEDED BY 4-640621-5 |
| NO | 35.56[1.400] | 14 | 1-640621-4 | SUPERSEDED BY 4-640621-4 |
| NO | 33.02[1.300] | 13 | 1-640621-3 | SUPERSEDED BY 4-640621-3 |
| NO | 30.48[1.200] | 12 | 1-640621-2 | SUPERSEDED BY 4-640621-2 |
| NO | 27.94[1.100] | 11 | 1-640621-1 | SUPERSEDED BY 4-640621-1 |
| NO | 25.40[1.000] | 10 | 1-640621-0 | SUPERSEDED BY 4-640621-0 |
| NO | 22.86[.900]  | 9  | -640621-9  | SUPERSEDED BY 3-640621-9 |
| NO | 20.32[.800]  | 8  | -640621-8  | SUPERSEDED BY 3-640621-8 |
| NO | 17.78[.700]  | 7  | -640621-7  | SUPERSEDED BY 3-640621-7 |
| NO | 15.24[.600]  | 6  | -640621-6  | SUPERSEDED BY 3-640621-6 |
| NO | 12.70[.500]  | 5  | -640621-5  | SUPERSEDED BY 3-640621-5 |
| NO | 10.16[.400]  | 4  | -640621-4  | SUPERSEDED BY 3-640621-4 |
| NO | 7.62[.300]   | 3  | -640621-3  | SUPERSEDED BY 3-640621-3 |
| NO | 5.08[.200]   | 2  | -640621-2  | SUPERSEDED BY 3-640621-2 |

- 1 MATERIAL: CONNECTOR - NYLON UL94V-2 (WHITE).  
CONTACTS - 0.30[.012] THICK COPPER ALLOY BRIGHT TIN-LEAD .00203[.000080] MIN THICKNESS FOR 640621-2 THRU 2-640621-8.  
MATTE WHISKER MITIGATED TIN .00203[.000080] MIN THICKNESS OVER NICKEL UNDERPLATE FOR 3-640621-2 THRU 5-640621-8.
- 2. CONTACTS ACCEPT 24 AWG WIRE WITH 1.52[.060] MAX INSULATION DIAMETER.
- 3. CONTACTS MUST ACCEPT 0.64±0.03[.025] POST AND REMAIN LOCKED IN POSITION.
- 4 IDENTIFICATION NUMBER FOR LAST CIRCUIT MAY NOT APPEAR ON ALL ASSEMBLIES.
- 5. DIMENSIONS IN BRACKETS ARE IN INCHES.
- 6. HOUSING FEATURES ARE: FEED THRU WITH LOCKING RAMP.
- 7 OBSOLETE PARTS: OBSOLETE CIS STREAMLINING PER D.RENAUD/D.SINISI
- 8 OBSOLETE PARTS

|  |  |                            |   |
|--|--|----------------------------|---|
| THIS DRAWING IS A CONTROLLED DOCUMENT. |  | DWN S. CARPENTER 11JUN2003 | <b>STE</b> TE Connectivity                        |
| DIMENSIONS: mm [INCHES]                |  | CHK D. BOSSI 11JUN2003     |   |
| TOLERANCES UNLESS OTHERWISE SPECIFIED: |  | APVD D. BOSSI 11JUN2003    | NAME MTA-100 CONNECTOR ASSEMBLY, 24 AWG, STANDARD |
| 0 PLC ±                                |  | PRODUCT SPEC 108-1050      |   |
| 1 PLC ±                                |  | APPLICATION SPEC 114-1019  | SIZE A2   |
| 2 PLC ±                                |  | WEIGHT                     | CAGE CODE 00779                                   |
| 3 PLC ± 0.13 [0.005]                   |  | FINISH                     | DRAWING NO C=640621                               |
| 4 PLC ±                                |  | MATERIAL 1                 | RESTRICTED TO -                                   |
| ANGLES ±                               |  | CUSTOMER DRAWING           | SCALE 5:1 SHEET 1 OF 1 REV W                      |

## X-ON Electronics

Largest Supplier of Electrical and Electronic Components

*Click to view similar products for [Headers & Wire Housings](#) category:*

*Click to view products by [TE Connectivity](#) manufacturer:*

Other Similar products are found below :

[892-18-020-10-001101](#) [58102-G61-06LF](#) [582553-1](#) [0009485154](#) [009176003701906](#) [0050291907](#) [LY20-4P-DT1-P1E-BR](#) [02.125.8002.8](#)  
[609-3404](#) [61062-3](#) [61082-181009](#) [622-3653LF](#) [63453-116](#) [636-1030](#) [636-1427](#) [636-3427](#) [636-4007](#) [641938-9](#) [641991-4](#) [644827-2](#) [65817-010LF](#) [65817-015LF](#) [65863-015LF](#) [66207-023LF](#) [67095-007LF](#) [67601157](#) [68645-018](#) [68648-049](#) [70.362.1628.0](#) [70-4210](#) [70-4226B](#) [70-4853B](#) [707-5020](#) [707-5028](#) [71.350.2428.0](#) [71918-208LF](#) [71961-016LF](#) [733-134](#) [733-162](#) [754199-000](#) [760-3052](#) [787-8014-00](#) [79531-3000](#)  
[FCN-360C032-B](#) [FCN-367T-T012/H](#) [FCN-723D010/2](#) [80.063.4001.1](#) [800-90-001-10-001000](#) [800-90-010-10-002000](#) [801-43-002-10-013000](#)