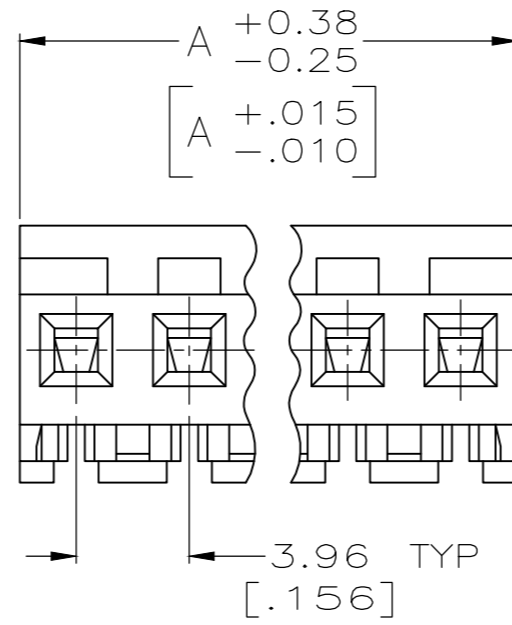
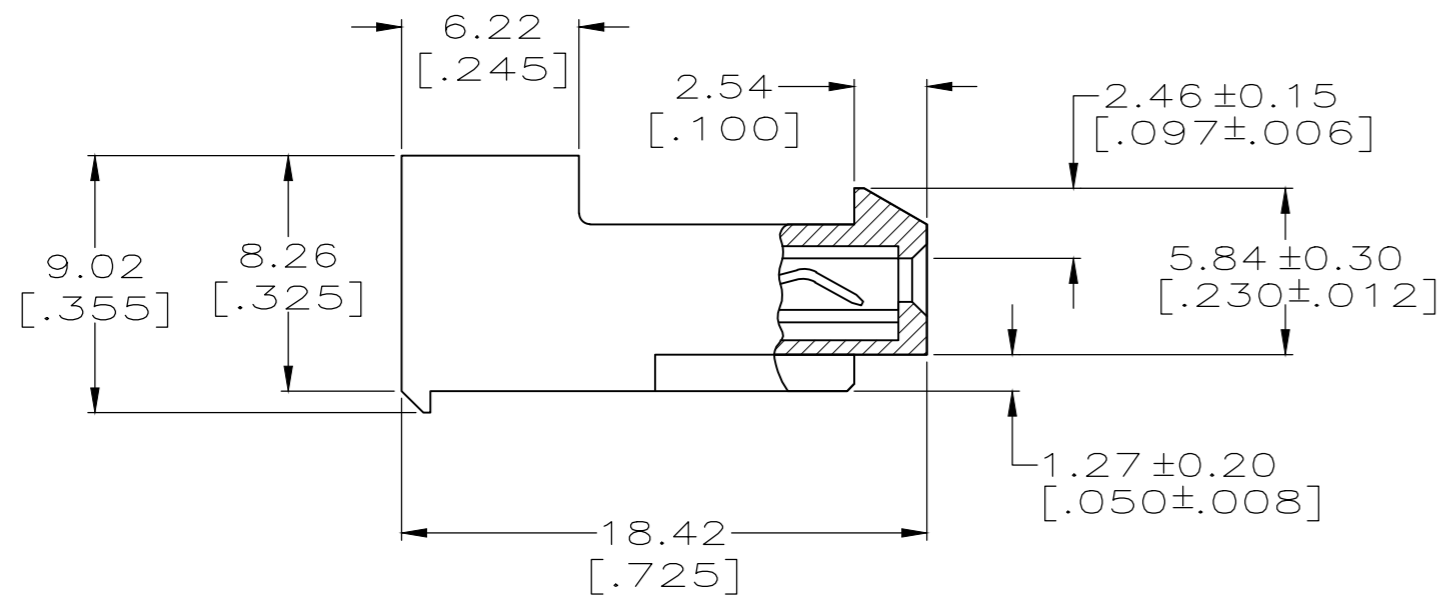
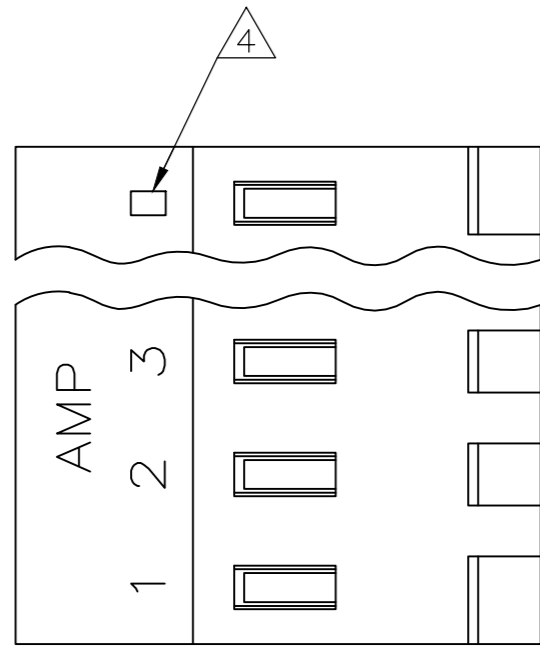


THIS DRAWING IS UNPUBLISHED. RELEASED FOR PUBLICATION
 © COPYRIGHT - By - TE CONNECTIVITY ALL RIGHTS RESERVED.

LOC	DIST	REVISIONS					
		P	LTR	DESCRIPTION	DATE	DWN	APVD
CM	00		V	ECR-13-008537	16SEP13	M.T	D.Z
			V1	ECO-14-012257	31OCT2014	KR	OC



1 MATERIAL: CONNECTOR - NYLON UL94V-2 (ORANGE).
 CONTACTS - 0.00076[.000030] GOLD THK OR 0.00008[.000003] MIN THK GOLD FLASH OVER 0.00068[.000027] THK PALLADIUM NICKEL, PER TE CONNECTIVITY'S DISCRETION, IN CONTACT AREA WITH MATTE TIN FOR -2 THRU -28, MATTE WHISKER MITIGATED TIN FOR 3-641217-2 THRU 5-641217-4 OVER NICKEL UNDERPLATE.

2 CONTACTS ACCEPT 18 AWG WIRE WITH 2.41[.095] MAX INSULATION DIAMETER.

3 CONTACTS MUST ACCEPT 1.14±0.03[.045±.001] SQUARE POST AND REMAIN LOCKED IN POSITION.

4 IDENTIFICATION NUMBER FOR LAST CIRCUIT MAY NOT APPEAR ON ALL ASSEMBLIES.

5 DIMENSIONS IN BRACKETS ARE IN INCHES.

6 HOUSING FEATURES ARE: CLOSED END WITH LOCKING RAMP.

7 OBSOLETE PARTS: OBSOLETE CIS STREAMLINING PER D.RENAUD/D.SINISI

YES	95.10[3.744]	24	5-641217-4
YES	91.13[3.588]	23	5-641217-3
YES	87.17[3.432]	22	5-641217-2
YES	83.21[3.276]	21	5-641217-1
YES	79.25[3.120]	20	5-641217-0
YES	75.29[2.964]	19	4-641217-9
YES	71.32[2.808]	18	4-641217-8
YES	67.36[2.652]	17	4-641217-7
YES	63.40[2.496]	16	4-641217-6
YES	59.44[2.340]	15	4-641217-5
YES	55.47[2.184]	14	4-641217-4
YES	51.51[2.028]	13	4-641217-3
YES	47.55[1.872]	12	4-641217-2
YES	43.59[1.716]	11	4-641217-1
YES	39.62[1.560]	10	4-641217-0
YES	35.66[1.404]	9	3-641217-9
YES	31.70[1.248]	8	3-641217-8
YES	27.74[1.092]	7	3-641217-7
YES	23.77[.936]	6	3-641217-6
YES	19.81[.780]	5	3-641217-5
YES	15.85[.624]	4	3-641217-4
YES	11.89[.468]	3	3-641217-3
YES	7.92[.312]	2	3-641217-2
NO	95.10[3.744]	24	2-641217-4
NO	91.13[3.588]	23	2-641217-3
NO	87.17[3.432]	22	2-641217-2
NO	83.21[3.276]	21	2-641217-1
NO	79.25[3.120]	20	2-641217-0
NO	75.29[2.964]	19	1-641217-9
NO	71.32[2.808]	18	1-641217-8
NO	67.36[2.652]	17	1-641217-7
NO	63.40[2.496]	16	1-641217-6
NO	59.44[2.340]	15	1-641217-5
NO	55.47[2.184]	14	1-641217-4
NO	51.51[2.028]	13	1-641217-3
NO	47.55[1.872]	12	1-641217-2
NO	43.59[1.716]	11	1-641217-1
NO	39.62[1.560]	10	1-641217-0
NO	35.66[1.404]	9	641217-9
NO	31.70[1.248]	8	641217-8
NO	27.74[1.092]	7	641217-7
NO	23.77[.936]	6	641217-6
NO	19.81[.780]	5	641217-5
NO	15.85[.624]	4	641217-4
NO	11.89[.468]	3	641217-3
NO	7.92[.312]	2	641217-2
LEADFREE	DIM A	NO. OF CIRCUITS	PART NO.

7	SUPERCEDED BY 5-641217-4	NO	95.10[3.744]	24	2-641217-4
	SUPERCEDED BY 5-641217-3	NO	91.13[3.588]	23	2-641217-3
	SUPERCEDED BY 5-641217-2	NO	87.17[3.432]	22	2-641217-2
	SUPERCEDED BY 5-641217-1	NO	83.21[3.276]	21	2-641217-1
	SUPERCEDED BY 5-641217-0	NO	79.25[3.120]	20	2-641217-0
	SUPERCEDED BY 4-641217-9	NO	75.29[2.964]	19	1-641217-9
	SUPERCEDED BY 4-641217-8	NO	71.32[2.808]	18	1-641217-8
	SUPERCEDED BY 4-641217-7	NO	67.36[2.652]	17	1-641217-7
	SUPERCEDED BY 4-641217-6	NO	63.40[2.496]	16	1-641217-6
	SUPERCEDED BY 4-641217-5	NO	59.44[2.340]	15	1-641217-5

THIS DRAWING IS A CONTROLLED DOCUMENT. DWN 15MAR2004
 K. WHITAKER
 CHK 15-MAR-04
 D. BOSSI
 APVD 15-MAR-04
 D. BOSSI
 PRODUCT SPEC
 108-1051
 APPLICATION SPEC
 114-1020
 WEIGHT -
 CUSTOMER DRAWING

TE Connectivity
 MTA-156 CONNECTOR ASSEMBLY,
 18 AWG STANDARD

SIZE A2 CAGE CODE 00779 DRAWING NO. C-641217 RESTRICTED TO -
 SCALE 1:1 SHEET 1 OF 1 REV V1

METRIC

X-ON Electronics

Largest Supplier of Electrical and Electronic Components

Click to view similar products for te connectivity manufacturer:

Other Similar products are found below :

[570416-000](#) [CLTEQ-M81CE-SSRELAY-4-20V](#) [D38999/24FJ4AN](#) [358838-000](#) [4-1195131-0](#) [650069-000](#) [SMD100-2](#) [CB-1022B-78](#)
[RM707012](#) [RP410012](#) [MMS42](#) [1-640426-8](#) [2EDL4CM](#) [DTS20W19-11PD-3028-LC](#) [RM202615](#) [NC6-P104-06](#) [MSPS103B](#) [DTS26F21-41AE](#) [DTS26F21-41PE-LC](#) [DTS26F21-11SE-3028-LC](#) [1932144-1](#) [293545-4](#) [LVR125S](#) [MS27466T25F4PB](#) [CKB-38-78010](#)
[1206SFF150F/63-2](#) [D38999/20JB35HA](#) [D38999/24WJ20PA](#) [1754138-1](#) [TE1500A2R2J](#) [DTS24F25-29PC-3028-LC](#) [D38999/24WG11HA](#)
[D38999/24WG11HN](#) [MS27467T21F11H](#) [DJT16E21-11HA](#) [1206SFH150F/24-2](#) [DTS24F19-11SC-3028-LC](#) [DTS24F21-41HN-LC](#)
[DTS24F21-41AN](#) [DTS24F21-41PN-LC](#) [RP330024](#) [MS27467T21F35J](#) [MS27467T21F11J](#) [MS27467T21F16H-LC](#) [MS27467T21F35H](#)
[MS27467T21F41H-LC](#) [DJT16E21-11PA-LC](#) [DJT16E21-11HA-LC](#) [DJT16E21-11AA](#) [MS27467T21B11JA](#)