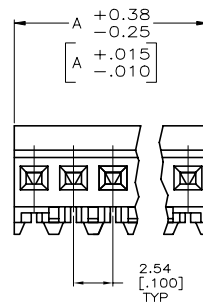
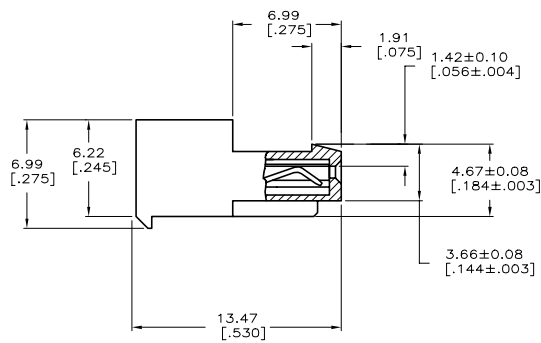
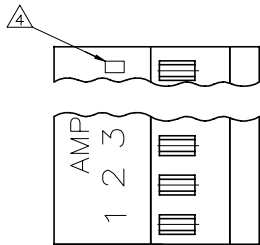


| LOC | QTY | REV | DATE | BY | APP |
|---------------------------|-----|-----|-----------|----|-----|
| CM | 00 | | | | |
| REVISED PER ECR-20-000721 | | | 04MAR2020 | PC | SW |

- 1 MATERIAL: CONNECTOR-NYLON UL94V-2 (WHITE).
 CONTACTS-0.30 [.012] THICK COPPER ALLOY
 BRIGHT TIN-LEAD 0.00203 [.000080] MINIMUM THICK FOR CONTACTS
 641535-2 THRU 641535-6,
 MATTE WHISKER MITIGATED TIN PLATE 0.00203 [.000080] MINIMUM THICK OVER
 NICKEL UNDERPLATE FOR CONTACTS 3-641535-2 THRU 3-641535-6.
- 2. CONTACTS ACCEPT 24 AWG WIRE WITH 1.52 [.060] MAXIMUM INSULATION DIAMETER.
- 3. CONTACTS MUST ACCEPT 0.36-0.51 [.014-.020] SQUARE OR ROUND POST AND
 REMAINED LOCKED IN POSITION.
- 4 IDENTIFICATION NUMBER FOR LAST CIRCUIT MAY NOT APPEAR ON ALL ASSEMBLIES.
- 5. DIMENSIONS IN BRACKETS ARE IN INCHES.
- 6. HOUSING FEATURES ARE: CLOSED END WITH LOCKING RAMP & LED CONTACT.
- 7 OBSOLETE PARTS: OBSOLETE CIS STREAMLINING PER D.RENAUD/D.SINIS
- 8 OBSOLETE PARTS



| LEAD FREE | DIM A | NO.OF POSN | ASSEMBLY |
|-----------|--------------|------------|------------|
| | 15.24 [.600] | 6 | 3-641535-6 |
| | 12.70 [.500] | 5 | 3-641535-5 |
| | 7.62 [.300] | 3 | 3-641535-3 |
| | 5.08 [.200] | 2 | 3-641535-2 |

| CONTAINS LEAD | DIM A | NO.OF POSN | ASSEMBLY |
|---------------|--------------|------------|-----------------------|
| 8 SUPERSEDED | 15.24 [.600] | 6 | 3-641535-6 |
| 7 SUPERSEDED | 12.70 [.500] | 5 | 3-641535-5 |
| 7 SUPERSEDED | 7.62 [.300] | 3 | 3-641535-3 |
| OBSOLETE | 5.08 [.200] | 2 | 3-641535-2 |

THIS DRAWING IS A CONTROLLED DOCUMENT. DR: S. HOOVER 10-DEC-2004
 CH: B. BOSSI 10-DEC-2004
 DIMENSIONS: mm (INCHES)
 DIMENSIONS: 114-1019
 PRODUCT SPEC: 108-1050
 APPLICATION SPEC: 114-1019
 MATERIAL: 1
 FINISH: 1
 WEIGHT: A100779
 SCALE: 5:1
 SHEET: 1 of 1
 REV: P
 CUSTOMER DRAWING

TE Connectivity
 MTA-100 CONNECTOR ASSEMBLY,
 24 AWG, FOR .014 TO .020 POST, SPECIAL

X-ON Electronics

Largest Supplier of Electrical and Electronic Components

Click to view similar products for [Headers & Wire Housings](#) category:

Click to view products by [TE Connectivity](#) manufacturer:

Other Similar products are found below :

[95000-104TRLF](#) [10135584-644402LF](#) [DF62W-EP2022PCA](#) [95000-106TRLF](#) [DF62W-2022SCA](#) [DF62W-EP2022PC](#) [2203348](#) [DF62W-2022SC](#) [1084018](#) [1029039](#) [1084017](#) [802-10-012-10-002000](#) [1112640](#) [1112639](#) [000-34000](#) [0009482033](#) [0009507031](#) [57102-S06-03LF](#) [57202-S52-04LF](#) [PCN6-15S-2.5E](#) [0039019024](#) [58102-G61-06LF](#) [582553-1](#) [0009508121](#) [0050291907](#) [018731A](#) [LY20-4P-DT1-P1E-BR](#) [02.125.8002.8](#) [60101931](#) [60598-1 \(Cut Strip\)](#) [M1625-3R/100](#) [61062-3](#) [61082-181009](#) [636-1427](#) [638009-1](#) [641938-9](#) [641991-4](#) [644168-1](#) [647662-1](#) [65039-019ELF](#) [65817-002LF](#) [65817-015LF](#) [65863-015LF](#) [66207-023LF](#) [67016-026LF](#) [67046-001LF](#) [67095-007LF](#) [68002-116](#) [68016-236H](#) [68648-049](#)