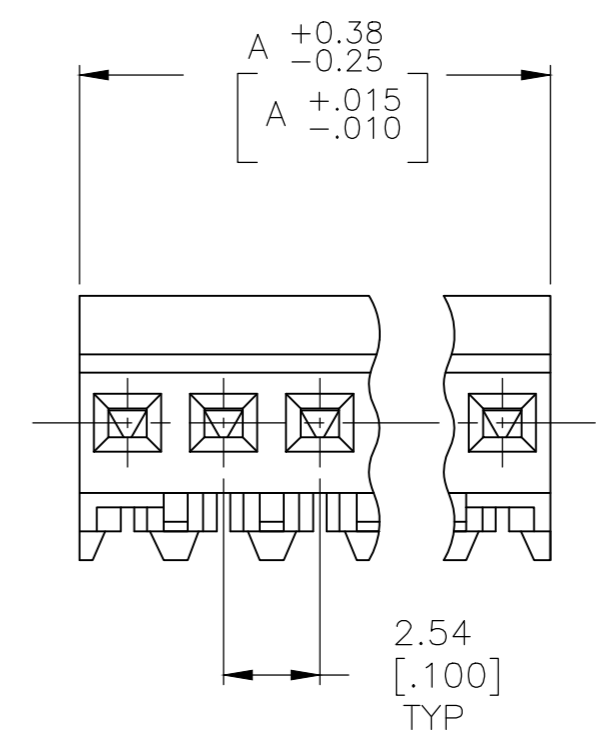
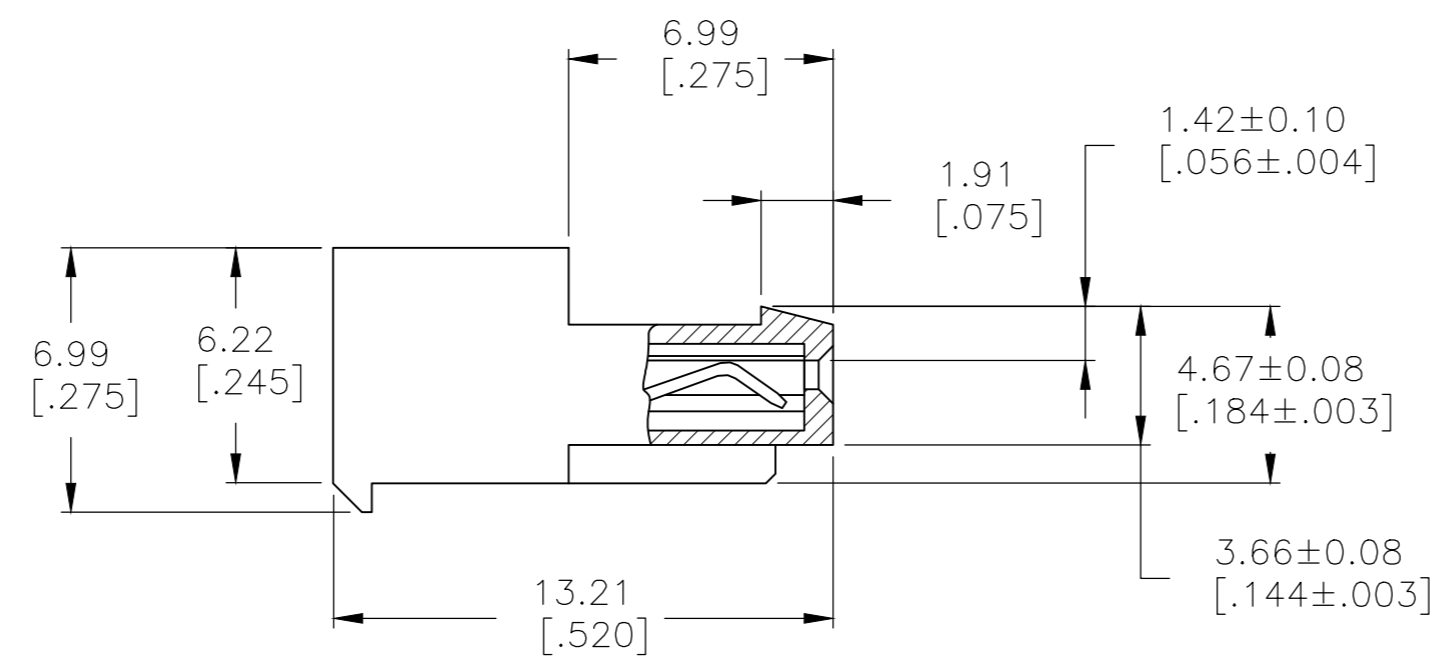
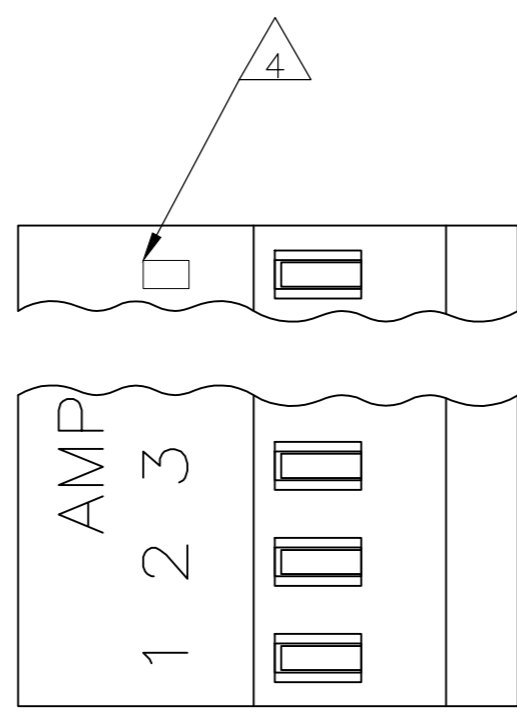


THIS DRAWING IS UNPUBLISHED. RELEASED FOR PUBLICATION
 © COPYRIGHT - By - TE CONNECTIVITY ALL RIGHTS RESERVED.

| LOC | | DIST | | REVISIONS | | | |
|-----|-----|-------------|--|---------------------------|-----------|------|----|
| P | LTR | DESCRIPTION | | DATE | DWN | APVD | |
| CM | 00 | S | | REVISED PER ECR-20-000725 | 20MAY2020 | PC | SW |

- 1 MATERIAL: CONNECTOR-NYLON UL94V-2 (BLUE).
CONTACTS-0.30 [.012] THICK COPPER ALLOY
BRIGHT TIN-LEAD 0.00203 [.000080] MINIMUM
THICK FOR CONTACTS 641536-2 THRU 1-641536-0,
MATTE WHISKER MITIGATED TIN PLATE 0.00203 [.000080]
MINIMUM THICK OVER NICKEL UNDERPLATE FOR CONTACTS
3-641536-2 THRU 4-641536-0.
- 2 CONTACTS ACCEPT 26 AWG WIRE WITH 1.52[.060] MAX
INSULATION DIAMETER.
- 3 CONTACTS MUST ACCEPT 0.36-0.51[.014-.020] SQUARE
OR ROUND POST AND REMAIN LOCKED IN POSITION.
- 4 IDENTIFICATION NUMBER FOR LAST CIRCUIT MAY
NOT APPEAR ON ALL ASSEMBLIES.
- 5 DIMENSIONS IN BRACKETS ARE IN INCHES.
- 6 HOUSING FEATURES ARE: CLOSED END WITH LOCKING
RAMP & LED CONTACT.
- 7 OBSOLETE PARTS



| | | |
|-------------|---|------------|
| 12.70[.500] | 5 | 3-641536-5 |
| 7.62[.300] | 3 | 3-641536-3 |
| 5.08[.200] | 2 | 3-641536-2 |

| DIM A | NO. OF CIRCUITS | PART NO. | |
|-------------|-----------------|---------------------|--------------|
| 12.70[.500] | 5 | 641536-5 | SUPERSEDED 7 |
| 7.62[.300] | 3 | 641536-3 | SUPERSEDED 7 |
| 5.08[.200] | 2 | 641536-2 | OBSOLETE |

| | | | | | | |
|---|--|-----------------------------------|------------------|--|-----------|---------------|
| THIS DRAWING IS A CONTROLLED DOCUMENT. | | DWN S. CARPENTER 08AUG2003 | | NAME | | |
| DIMENSIONS: mm [INCHES] | | CHK S. CARPENTER 08AUG2003 | | MTA-100 CONNECTOR ASSEMBLY, 26 AWG, FOR .014 TO .020 POST, SPECIAL | | |
| TOLERANCES UNLESS OTHERWISE SPECIFIED: | | APVD S. CARPENTER 08AUG2003 | | SIZE | CAGE CODE | DRAWING NO |
| 0 PLC ± - 1 PLC ± - 2 PLC ± - 3 PLC ± - 4 PLC ± - ANGLES ± - | | PRODUCT SPEC 108-1050 | | A2 | 00779 | C-641536 |
| MATERIAL | | FINISH | WEIGHT | SCALE | SHEET | RESTRICTED TO |
| 1 | | 1 | CUSTOMER DRAWING | 5:1 | 1 of 1 | - |
| | | | | REV | S | |

X-ON Electronics

Largest Supplier of Electrical and Electronic Components

Click to view similar products for [Headers & Wire Housings](#) category:

Click to view products by [TE Connectivity](#) manufacturer:

Other Similar products are found below :

[95000-104TRLF](#) [10135584-644402LF](#) [DF62W-EP2022PCA](#) [95000-106TRLF](#) [DF62W-2022SCA](#) [DF62W-EP2022PC](#) [2203348](#) [DF62W-2022SC](#) [1084018](#) [1029039](#) [1084017](#) [802-10-012-10-002000](#) [1112640](#) [1112639](#) [000-34000](#) [0009482033](#) [0009507031](#) [57102-S06-03LF](#) [57202-S52-04LF](#) [PCN6-15S-2.5E](#) [0039019024](#) [58102-G61-06LF](#) [582553-1](#) [0009508121](#) [0050291907](#) [018731A](#) [LY20-4P-DT1-P1E-BR](#) [02.125.8002.8](#) [60101931](#) [60598-1 \(Cut Strip\)](#) [M1625-3R/100](#) [61062-3](#) [61082-181009](#) [636-1427](#) [638009-1](#) [641938-9](#) [641991-4](#) [644168-1](#) [647662-1](#) [65039-019ELF](#) [65817-002LF](#) [65817-015LF](#) [65863-015LF](#) [66207-023LF](#) [67016-026LF](#) [67046-001LF](#) [67095-007LF](#) [68002-116](#) [68016-236H](#) [68648-049](#)