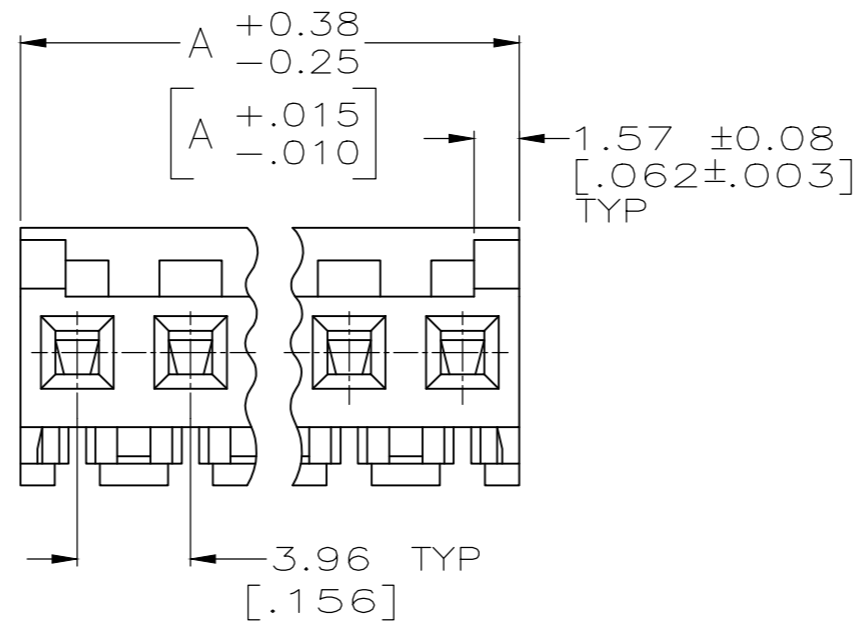
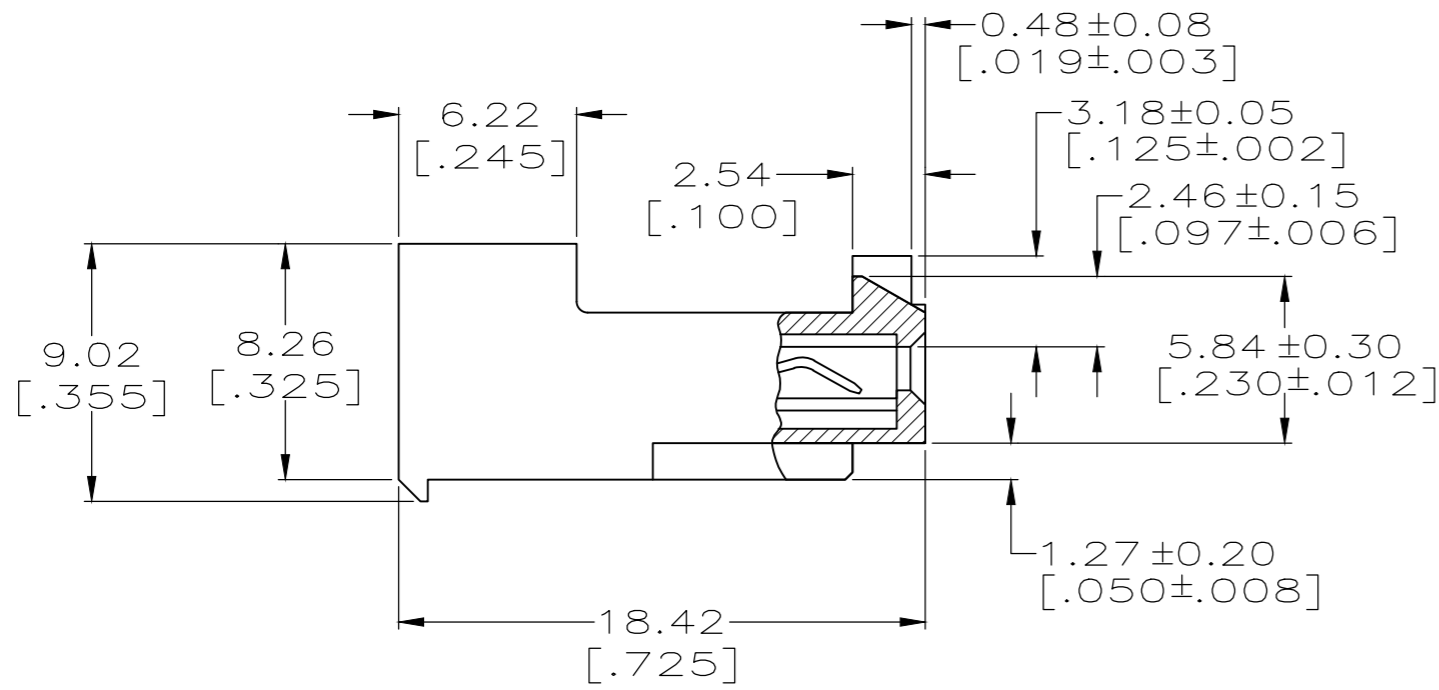
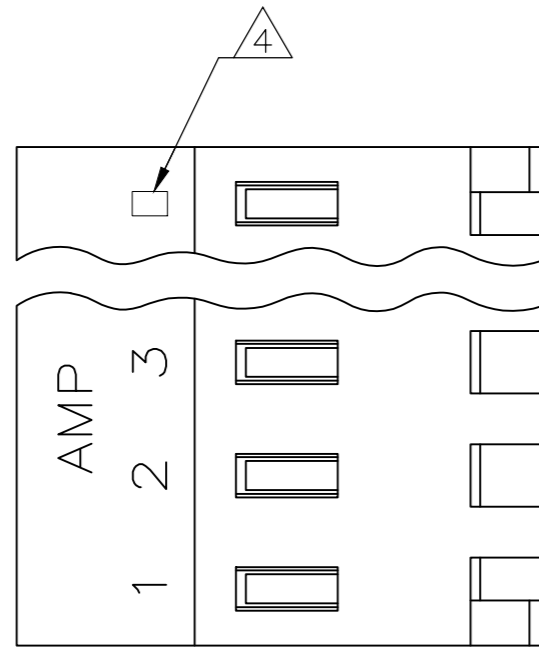


THIS DRAWING IS UNPUBLISHED. RELEASED FOR PUBLICATION  
 © COPYRIGHT - By - TE CONNECTIVITY ALL RIGHTS RESERVED.

LOC	DIST	REVISIONS			
P	LTR	DESCRIPTION	DATE	DWN	APVD
CM	00				
	N	REVISED PER ECR-20-000814	26MAY2020	PC	SW



1 MATERIAL: CONNECTOR - NYLON UL94V-2 (ORANGE).  
 CONTACTS - 0.00076[.000030] GOLD THK OR 0.00008[.000003] MIN THK GOLD FLASH OVER 0.00068[.000027] THK PALLADIUM NICKEL, PER TE CONNECTIVITY'S DISCRETION. IN CONTACT AREA WITH MATTE TIN FOR -2 THRU -28, MATTE WHISKER MITIGATED TIN FOR 3-644460-2 THRU 4-644460-8 OVER NICKEL UNDERPLATE.

2 CONTACTS ACCEPT 18 AWG WIRE WITH 2.41[.095] MAX INSULATION DIAMETER.

3 CONTACTS MUST ACCEPT 1.14±0.03[.045±.001] POST AND REMAIN LOCKED IN POSITION.

4 IDENTIFICATION NUMBER FOR LAST CIRCUIT MAY NOT APPEAR ON ALL ASSEMBLIES.

5 DIMENSIONS IN BRACKETS ARE IN INCHES.

6 HOUSING FEATURES ARE: CLOSED END WITH LOCKING RAMP AND POLARIZING TAB.

7 OBSOLETE PARTS: OBSOLETE CIS STREAMLINING PER D.RENAUD/D.SINISI

NO	DESCRIPTION	DATE	REV
NO	71.32[2.808]	18	4-644460-8
NO	67.36[2.652]	17	4-644460-7
NO	63.40[2.496]	16	4-644460-6
NO	59.44[2.340]	15	4-644460-5
NO	55.47[2.184]	14	4-644460-4
NO	51.51[2.028]	13	4-644460-3
NO	47.55[1.872]	12	4-644460-2
NO	43.59[1.716]	11	4-644460-1
NO	39.62[1.560]	10	4-644460-0
NO	35.66[1.404]	9	3-644460-9
NO	31.70[1.248]	8	3-644460-8
NO	27.74[1.092]	7	3-644460-7
NO	23.77[.936]	6	3-644460-6
NO	19.81[.780]	5	3-644460-5
NO	15.85[.624]	4	3-644460-4
NO	11.89[.468]	3	3-644460-3
NO	7.92[.312]	2	3-644460-2

OBSOLETE NO 71.32[2.808] 18 1-644460-8

7 SUPERSEDED BY 4-644460-6 NO 63.40[2.496] 16 1-644460-6  
 OBSOLETE NO 59.44[2.340] 15 1-644460-5

NO	DESCRIPTION	DATE	REV
NO	47.55[1.872]	12	1-644460-2
NO	43.59[1.716]	11	1-644460-1
NO	39.62[1.560]	10	1-644460-0
NO	35.66[1.404]	9	644460-9
NO	31.70[1.248]	8	644460-8
NO	27.74[1.092]	7	644460-7
NO	23.77[.936]	6	644460-6
NO	19.81[.780]	5	644460-5
NO	15.85[.624]	4	644460-4
NO	11.89[.468]	3	644460-3
NO	7.92[.312]	2	644460-2

THIS DRAWING IS A CONTROLLED DOCUMENT.		DWN K. WHITAKER 15MAR2004		
DIMENSIONS: mm [INCHES]		CHK D. BOSSI 15-MAR-04		
TOLERANCES UNLESS OTHERWISE SPECIFIED:		APVD D. BOSSI 15-MAR-04	NAME	
0 PLC ± -		PRODUCT SPEC	MTA-156 CONNECTOR ASSEMBLY, 18 AWG, STANDARD	
1 PLC ± -		APPLICATION SPEC	SIZE	CAGE CODE
2 PLC ± 0.13 [.005]		114-1020	A2	00779
3 PLC ± -		WEIGHT	DRAWING NO	RESTRICTED TO
4 PLC ± -		-	C=644460	-
ANGLES ± 0°30'		CUSTOMER DRAWING	SCALE	SHEET
MATERIAL 1		FINISH 1	4:1	1 OF 1
			REV	N

## X-ON Electronics

Largest Supplier of Electrical and Electronic Components

*Click to view similar products for [Headers & Wire Housings](#) category:*

*Click to view products by [TE Connectivity](#) manufacturer:*

Other Similar products are found below :

[95000-104TRLF](#) [10135584-644402LF](#) [DF62W-EP2022PCA](#) [95000-106TRLF](#) [DF62W-2022SCA](#) [DF62W-EP2022PC](#) [2203348](#) [DF62W-2022SC](#) [1084018](#) [1029039](#) [1084017](#) [802-10-012-10-002000](#) [1112640](#) [1112639](#) [000-34000](#) [0009482033](#) [0009507031](#) [57102-S06-03LF](#) [57202-S52-04LF](#) [PCN6-15S-2.5E](#) [0039019024](#) [58102-G61-06LF](#) [582553-1](#) [0009508121](#) [0050291907](#) [018731A](#) [LY20-4P-DT1-P1E-BR](#) [02.125.8002.8](#) [60101931](#) [60598-1 \(Cut Strip\)](#) [M1625-3R/100](#) [61062-3](#) [61082-181009](#) [636-1427](#) [638009-1](#) [641938-9](#) [641991-4](#) [644168-1](#) [647662-1](#) [65039-019ELF](#) [65817-002LF](#) [65817-015LF](#) [65863-015LF](#) [66207-023LF](#) [67016-026LF](#) [67046-001LF](#) [67095-007LF](#) [68002-116](#) [68016-236H](#) [68648-049](#)