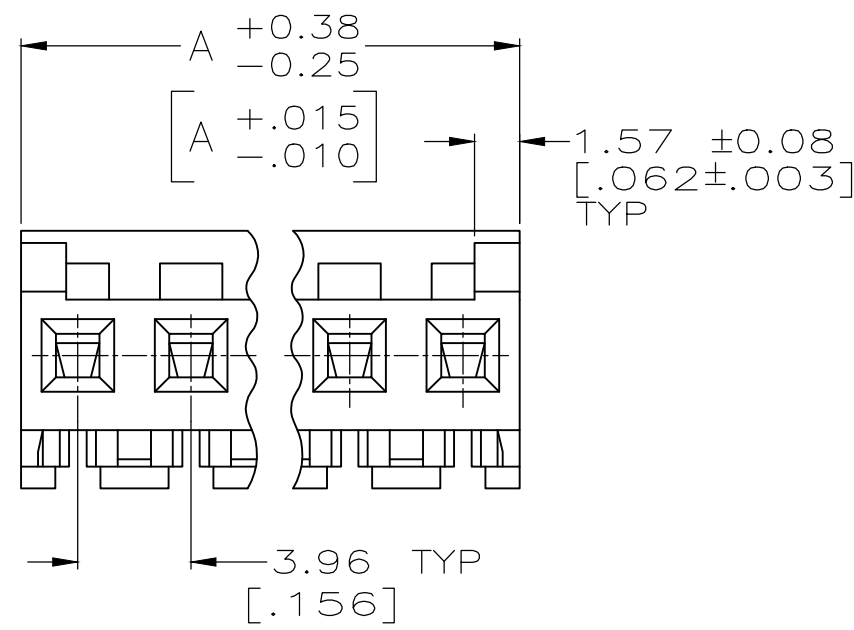
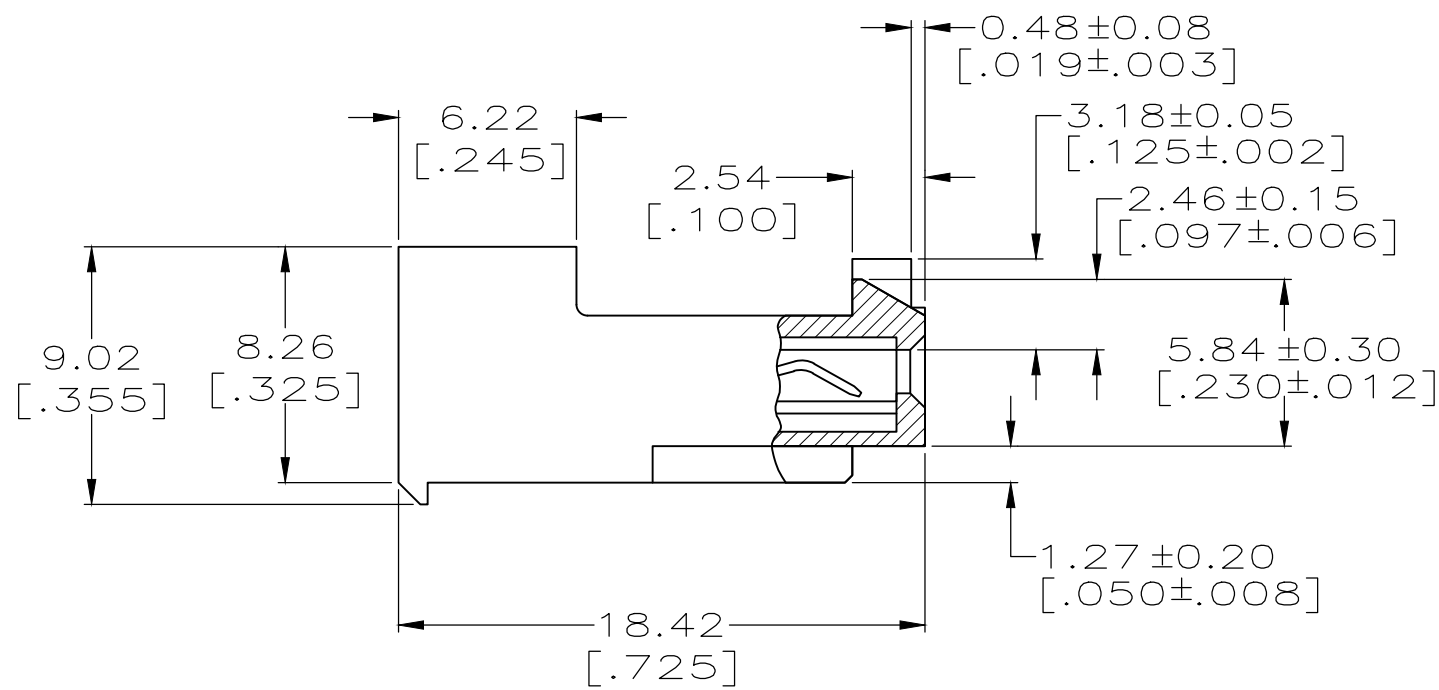
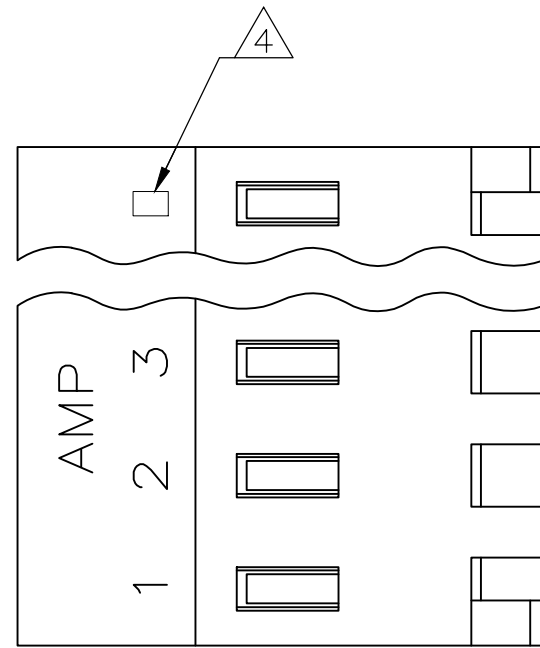


THIS DRAWING IS UNPUBLISHED. RELEASED FOR PUBLICATION
 © COPYRIGHT - By - TE CONNECTIVITY ALL RIGHTS RESERVED.

LOC	DIST	REVISIONS					
CM	00	P	LTR	DESCRIPTION	DATE	DWN	APVD
		N		REVISED PER ECR-20-000814	26MAY2020	PC	SW



1 MATERIAL: CONNECTOR - NYLON UL94V-2 (ORANGE).
 CONTACTS - 0.00076[.000030] GOLD THK OR 0.00008[.000003] MIN THK GOLD FLASH OVER 0.00068[.000027] THK PALLADIUM NICKEL, PER TE CONNECTIVITY'S DISCRETION. IN CONTACT AREA WITH MATTE TIN FOR -2 THRU -28, MATTE WHISKER MITIGATED TIN FOR 3-644460-2 THRU 4-644460-8 OVER NICKEL UNDERPLATE.

2 CONTACTS ACCEPT 18 AWG WIRE WITH 2.41[.095] MAX INSULATION DIAMETER.

3 CONTACTS MUST ACCEPT 1.14±0.03[.045±.001] POST AND REMAIN LOCKED IN POSITION.

4 IDENTIFICATION NUMBER FOR LAST CIRCUIT MAY NOT APPEAR ON ALL ASSEMBLIES.

5 DIMENSIONS IN BRACKETS ARE IN INCHES.

6 HOUSING FEATURES ARE: CLOSED END WITH LOCKING RAMP AND POLARIZING TAB.

7 OBSOLETE PARTS: OBSOLETE CIS STREAMLINING PER D.RENAUD/D.SINISI

NO	DESCRIPTION	DATE	REV
NO	71.32[2.808]	18	4-644460-8
NO	67.36[2.652]	17	4-644460-7
NO	63.40[2.496]	16	4-644460-6
NO	59.44[2.340]	15	4-644460-5
NO	55.47[2.184]	14	4-644460-4
NO	51.51[2.028]	13	4-644460-3
NO	47.55[1.872]	12	4-644460-2
NO	43.59[1.716]	11	4-644460-1
NO	39.62[1.560]	10	4-644460-0
NO	35.66[1.404]	9	3-644460-9
NO	31.70[1.248]	8	3-644460-8
NO	27.74[1.092]	7	3-644460-7
NO	23.77[.936]	6	3-644460-6
NO	19.81[.780]	5	3-644460-5
NO	15.85[.624]	4	3-644460-4
NO	11.89[.468]	3	3-644460-3
NO	7.92[.312]	2	3-644460-2

OBSOLETE NO 71.32[2.808] 18 1-644460-8

7 SUPERSEDED BY 4-644460-6 NO 63.40[2.496] 16 1-644460-6
 OBSOLETE NO 59.44[2.340] 15 1-644460-5

OBSOLETE NO 47.55[1.872] 12 1-644460-2
 NO 43.59[1.716] 11 1-644460-1
 NO 39.62[1.560] 10 1-644460-0
 NO 35.66[1.404] 9 644460-9
 NO 31.70[1.248] 8 644460-8
 NO 27.74[1.092] 7 644460-7
 NO 23.77[.936] 6 644460-6
 NO 19.81[.780] 5 644460-5
 NO 15.85[.624] 4 644460-4
 NO 11.89[.468] 3 644460-3
 NO 7.92[.312] 2 644460-2

LEADFREE DIM A NO. OF CIRCUITS PART NO.

THIS DRAWING IS A CONTROLLED DOCUMENT.		DWN K. WHITAKER 15MAR2004		
DIMENSIONS: mm [INCHES]		CHK D. BOSSI 15-MAR-04		
TOLERANCES UNLESS OTHERWISE SPECIFIED:		APVD D. BOSSI 15-MAR-04	NAME	
0 PLC ± -		PRODUCT SPEC	MTA-156 CONNECTOR ASSEMBLY, 18 AWG, STANDARD	
1 PLC ± -		APPLICATION SPEC	-	
2 PLC ± 0.13 [.005]		114-1020	SIZE	CAGE CODE
3 PLC ± -		114-1020	A2	00779
4 PLC ± -		WEIGHT	DRAWING NO	RESTRICTED TO
ANGLES ± 0°30'		-	C=644460	-
MATERIAL	FINISH	CUSTOMER DRAWING	SCALE	SHEET
1	1		4:1	1 OF 1
			REV	N

X-ON Electronics

Largest Supplier of Electrical and Electronic Components

Click to view similar products for [Headers & Wire Housings](#) category:

Click to view products by [TE Connectivity](#) manufacturer:

Other Similar products are found below :

[95000-104TRLF](#) [10135584-644402LF](#) [DF62W-EP2022PCA](#) [95000-106TRLF](#) [DF62W-2022SCA](#) [DF62W-EP2022PC](#) [2203348](#) [DF62W-2022SC](#) [1084018](#) [1029039](#) [1084017](#) [802-10-012-10-002000](#) [1112640](#) [1112639](#) [000-34000](#) [0009482033](#) [0009507031](#) [57102-S06-03LF](#) [57202-S52-04LF](#) [PCN6-15S-2.5E](#) [0039019024](#) [58102-G61-06LF](#) [582553-1](#) [0009508121](#) [0050291907](#) [018731A](#) [LY20-4P-DT1-P1E-BR](#) [02.125.8002.8](#) [60101931](#) [60598-1 \(Cut Strip\)](#) [M1625-3R/100](#) [61062-3](#) [61082-181009](#) [636-1427](#) [638009-1](#) [641938-9](#) [641991-4](#) [644168-1](#) [647662-1](#) [65039-019ELF](#) [65817-002LF](#) [65817-015LF](#) [65863-015LF](#) [66207-023LF](#) [67016-026LF](#) [67046-001LF](#) [67095-007LF](#) [68002-116](#) [68016-236H](#) [68648-049](#)