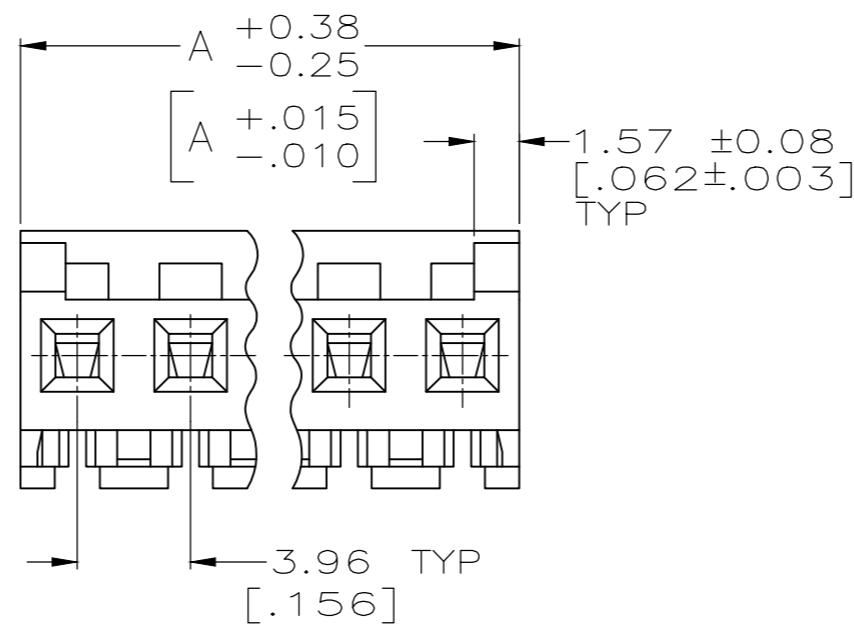
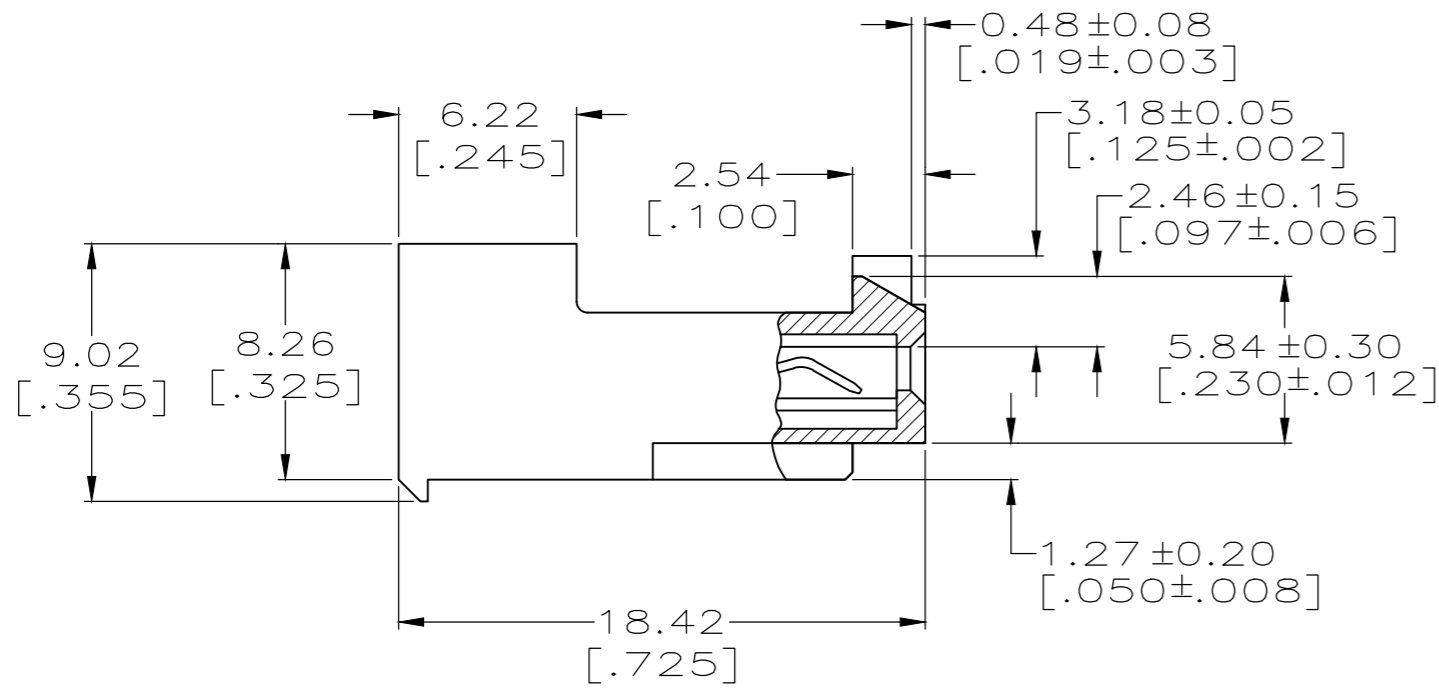
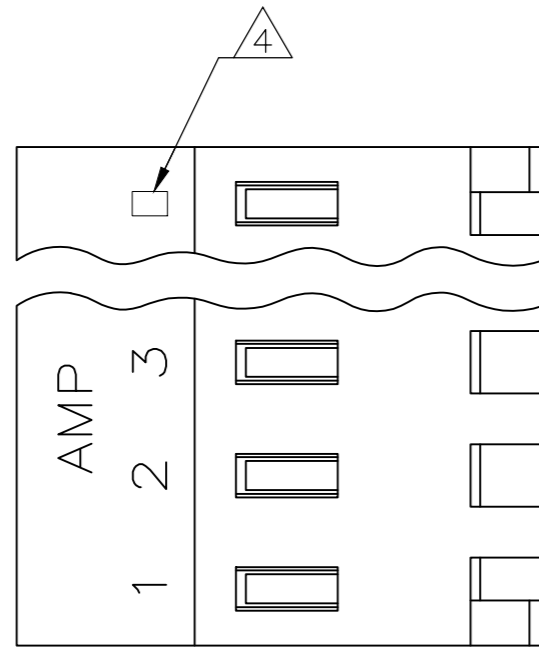


THIS DRAWING IS UNPUBLISHED. RELEASED FOR PUBLICATION
 © COPYRIGHT - By - TE CONNECTIVITY ALL RIGHTS RESERVED.

LOC	DIST	REVISIONS			
P	LTR	DESCRIPTION	DATE	DWN	APVD
CM	00				
N		REVISED PER ECR-20-000814	26MAY2020	PC	SW



1 MATERIAL: CONNECTOR - NYLON UL94V-2 (ORANGE).
 CONTACTS - 0.00076[.000030] GOLD THK OR 0.00008[.000003] MIN THK GOLD FLASH OVER 0.00068[.000027] THK PALLADIUM NICKEL, PER TE CONNECTIVITY'S DISCRETION. IN CONTACT AREA WITH MATTE TIN FOR -2 THRU -28, MATTE WHISKER MITIGATED TIN FOR 3-644460-2 THRU 4-644460-8 OVER NICKEL UNDERPLATE.

2 CONTACTS ACCEPT 18 AWG WIRE WITH 2.41[.095] MAX INSULATION DIAMETER.

3 CONTACTS MUST ACCEPT 1.14±0.03[.045±.001] POST AND REMAIN LOCKED IN POSITION.

4 IDENTIFICATION NUMBER FOR LAST CIRCUIT MAY NOT APPEAR ON ALL ASSEMBLIES.

5 DIMENSIONS IN BRACKETS ARE IN INCHES.

6 HOUSING FEATURES ARE: CLOSED END WITH LOCKING RAMP AND POLARIZING TAB.

7 OBSOLETE PARTS: OBSOLETE CIS STREAMLINING PER D.RENAUD/D.SINISI

NO	DESCRIPTION	DATE	REV
NO	71.32[2.808]	18	4-644460-8
NO	67.36[2.652]	17	4-644460-7
NO	63.40[2.496]	16	4-644460-6
NO	59.44[2.340]	15	4-644460-5
NO	55.47[2.184]	14	4-644460-4
NO	51.51[2.028]	13	4-644460-3
NO	47.55[1.872]	12	4-644460-2
NO	43.59[1.716]	11	4-644460-1
NO	39.62[1.560]	10	4-644460-0
NO	35.66[1.404]	9	3-644460-9
NO	31.70[1.248]	8	3-644460-8
NO	27.74[1.092]	7	3-644460-7
NO	23.77[.936]	6	3-644460-6
NO	19.81[.780]	5	3-644460-5
NO	15.85[.624]	4	3-644460-4
NO	11.89[.468]	3	3-644460-3
NO	7.92[.312]	2	3-644460-2

OBSOLETE	NO	71.32[2.808]	18	1-644460-8		
7	SUPERSEDED BY	4-644460-6	NO	63.40[2.496]	16	1-644460-6
OBSOLETE	NO	59.44[2.340]	15	1-644460-5		

OBSOLETE	NO	47.55[1.872]	12	1-644460-2
	NO	43.59[1.716]	11	1-644460-1
	NO	39.62[1.560]	10	1-644460-0
	NO	35.66[1.404]	9	644460-9
	NO	31.70[1.248]	8	644460-8
	NO	27.74[1.092]	7	644460-7
	NO	23.77[.936]	6	644460-6
	NO	19.81[.780]	5	644460-5
	NO	15.85[.624]	4	644460-4
	NO	11.89[.468]	3	644460-3
NO	7.92[.312]	2	644460-2	

THIS DRAWING IS A CONTROLLED DOCUMENT.		DWN	15MAR2004	TE Connectivity	
		CHK	K. WHITAKER		
		APVD	D. BOSSI		
		PRODUCT SPEC	D. BOSSI		
		APPLICATION SPEC	108-1051		
		WEIGHT	114-1020		
		CUSTOMER DRAWING			
DIMENSIONS: mm [INCHES]		TOLERANCES UNLESS OTHERWISE SPECIFIED:		NAME	
0 PLC ± -		1 PLC ± -		MTA-156 CONNECTOR ASSEMBLY, 18 AWG, STANDARD	
2 PLC ± 0.13 [.005]		3 PLC ± -		SIZE	
4 PLC ± -		ANGLES ± 0°30'		CAGE CODE	
MATERIAL		FINISH		DRAWING NO	
1		1		A2 00779 C=644460	
				RESTRICTED TO	
				SCALE 4:1 SHEET 1 OF 1 REV N	

X-ON Electronics

Largest Supplier of Electrical and Electronic Components

Click to view similar products for [Headers & Wire Housings](#) category:

Click to view products by [TE Connectivity](#) manufacturer:

Other Similar products are found below :

[892-18-020-10-001101](#) [58102-G61-06LF](#) [582553-1](#) [0009485154](#) [009176003701906](#) [0050291907](#) [LY20-4P-DT1-P1E-BR](#) [02.125.8002.8](#)
[609-3404](#) [61062-3](#) [61082-181009](#) [622-3653LF](#) [63453-116](#) [636-1030](#) [636-1427](#) [636-3427](#) [636-4007](#) [641938-9](#) [641991-4](#) [644827-2](#) [65817-010LF](#) [65817-015LF](#) [65863-015LF](#) [66207-023LF](#) [67095-007LF](#) [67601157](#) [68645-018](#) [68648-049](#) [70.362.1628.0](#) [70-4210](#) [70-4226B](#) [70-4853B](#) [707-5020](#) [707-5028](#) [71.350.2428.0](#) [71918-208LF](#) [71961-016LF](#) [733-134](#) [733-162](#) [754199-000](#) [760-3052](#) [787-8014-00](#) [79531-3000](#)
[FCN-360C032-B](#) [FCN-367T-T012/H](#) [FCN-723D010/2](#) [80.063.4001.1](#) [800-90-001-10-001000](#) [800-90-010-10-002000](#) [801-43-002-10-013000](#)