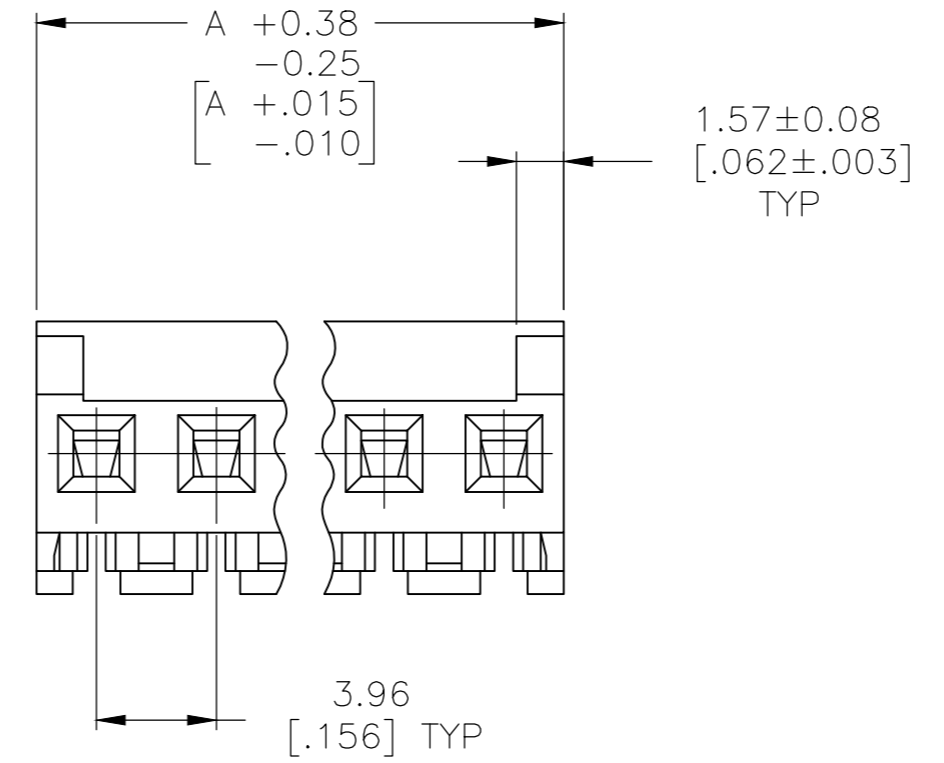
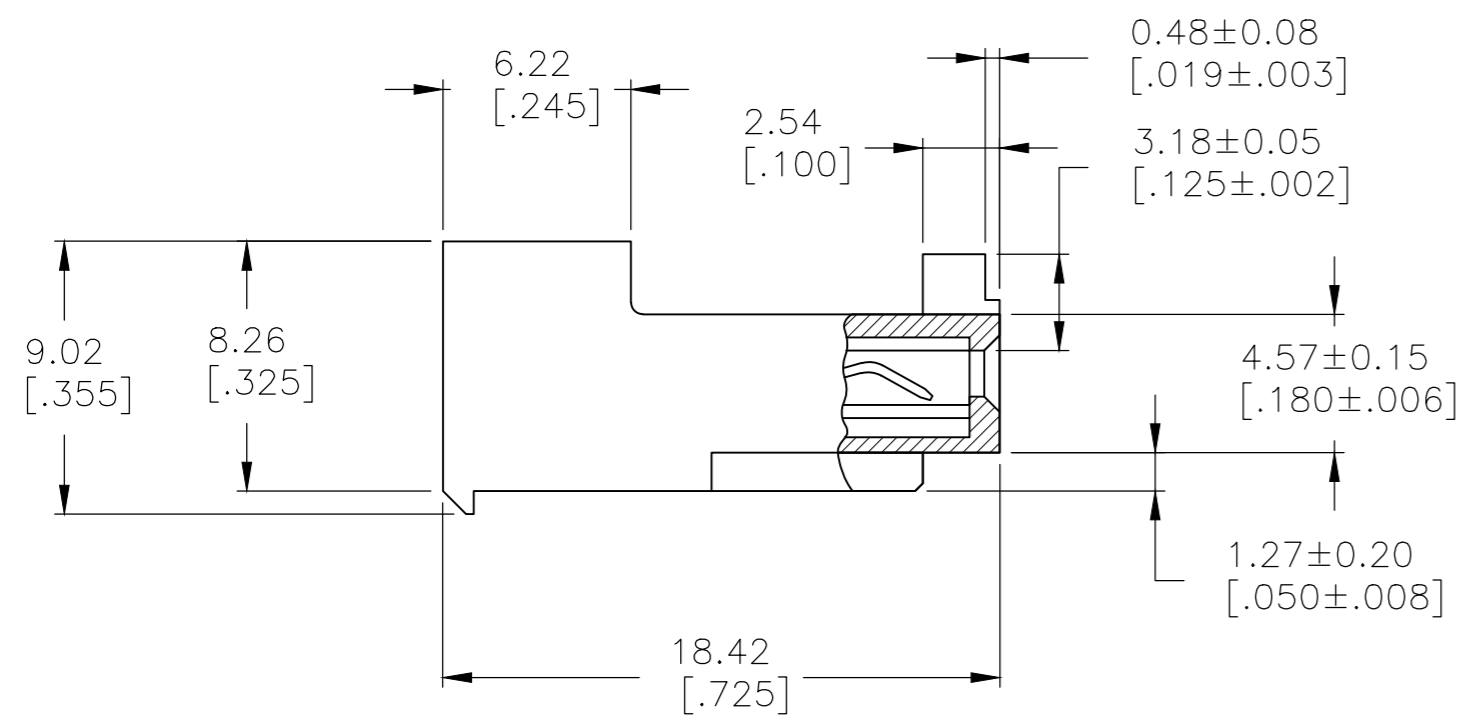
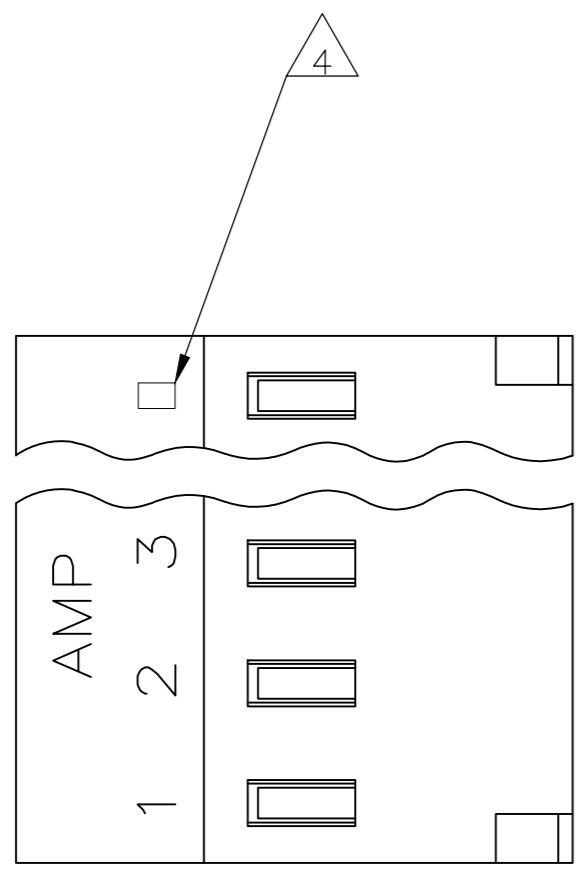


THIS DRAWING IS UNPUBLISHED. RELEASED FOR PUBLICATION
 © COPYRIGHT - By - TE CONNECTIVITY ALL RIGHTS RESERVED.

LOC	DIST	REVISIONS					
		P	LTR	DESCRIPTION	DATE	DWN	APVD
CM	54						
		E		REVISED PER ECR-20-000814	26MAY2020	PC	SW

- 1 MATERIAL: CONNECTOR - NYLON UL94V-2 (ORANGE).
 CONTACTS - 0.30 [.012] THICK COPPER ALLOY (BRIGHT-TIN LEAD 0.00203 [.000080] MIN THK FOR CONTACTS 644461-2 THRU 1-644461-4, MATTE WHISKER MITIGATED TIN 0.00203 [.000080] MIN THICK FOR CONTACTS 3-644461-2 THRU 4-644461-4)
- 2 CONTACTS ACCEPT 18 AWG WIRE WITH 2.41 [.095] MAX INSULATION DIAMETER.
- 3 CONTACTS MUST ACCEPT 1.14±0.03 [.045±.001] SQUARE POST AND REMAIN LOCKED IN POSITION.
- 4 IDENTIFICATION NUMBER FOR LAST CIRCUIT MAY NOT APPEAR ON ALL ASSEMBLIES.
- 5 DIMENSIONS IN BRACKETS ARE IN INCHES.
- 6 HOUSING FEATURES ARE: CLOSED END WITHOUT LOCKING RAMP AND WITH POLARIZING TAB.3
- 7 OBSOLETE PARTS: OBSOLETE CIS STREAMLINING PER D.RENAUD/D.SINISI
- 8 OBSOLETE PARTS



	DIM A	NO. OF CIRCUITS	PART NO.
	55.47 [2.184]	14	4-644461-4
	51.51 [2.028]	13	4-644461-3
	47.55 [1.872]	12	4-644461-2
	43.59 [1.716]	11	4-644461-1
	39.62 [1.560]	10	4-644461-0
	35.66 [1.404]	9	3-644461-9
	31.70 [1.248]	8	3-644461-8
	27.74 [1.092]	7	3-644461-7
	23.77 [.936]	6	3-644461-6
	19.81 [.780]	5	3-644461-5
	15.85 [.624]	4	3-644461-4
	11.89 [.468]	3	3-644461-3
	7.92 [.312]	2	3-644461-2
7 SUPERCEDED	55.47 [2.184]	14	1-644461-4
7 OBSOLETE	51.51 [2.028]	13	1-644461-3
7 SUPERCEDED	47.55 [1.872]	12	1-644461-2
7 SUPERCEDED	43.59 [1.716]	11	1-644461-1
8 SUPERCEDED	39.62 [1.560]	10	1-644461-0
8 SUPERCEDED	35.66 [1.404]	9	-644461-9-
8 SUPERCEDED	31.70 [1.248]	8	-644461-8-
8 SUPERCEDED	27.74 [1.092]	7	-644461-7-
8 SUPERCEDED	23.77 [.936]	6	-644461-6-
8 SUPERCEDED	19.81 [.780]	5	-644461-5-
8 SUPERCEDED	15.85 [.624]	4	-644461-4-
8 SUPERCEDED	11.89 [.468]	3	-644461-3-
8 SUPERCEDED	7.92 [.312]	2	-644461-2-

THIS DRAWING IS A CONTROLLED DOCUMENT.		DWN B. LEWIS 12FEB91	TE Connectivity	
DIMENSIONS: mm [INCHES]		CHK R. SWING 12FEB91	MTA 156 CONNECTOR ASSEMBLY, 18 AWG, STANDARD	
TOLERANCES UNLESS OTHERWISE SPECIFIED:		APVD D.R. CLARK 20FEB91	NAME	
0 PLC ± -	1 PLC ± -	PRODUCT SPEC 108-1051	SIZE	
2 PLC ± -	3 PLC ± -	APPLICATION SPEC 114-1020	CAGE CODE 00779	DRAWING NO C-644461
4 PLC ± -	ANGLES ± -	WEIGHT	SCALE 4:1	SHEET 1 OF 1
MATERIAL 1	FINISH 1	CUSTOMER DRAWING		REV E

X-ON Electronics

Largest Supplier of Electrical and Electronic Components

Click to view similar products for [Headers & Wire Housings](#) category:

Click to view products by [TE Connectivity](#) manufacturer:

Other Similar products are found below :

[95000-104TRLF](#) [10135584-644402LF](#) [DF62W-EP2022PCA](#) [95000-106TRLF](#) [DF62W-2022SCA](#) [DF62W-EP2022PC](#) [2203348](#) [DF62W-2022SC](#) [1084018](#) [1029039](#) [1084017](#) [802-10-012-10-002000](#) [1112640](#) [1112639](#) [000-34000](#) [0009482033](#) [0009507031](#) [57102-S06-03LF](#) [57202-S52-04LF](#) [PCN6-15S-2.5E](#) [0039019024](#) [58102-G61-06LF](#) [582553-1](#) [0009508121](#) [0050291907](#) [018731A](#) [LY20-4P-DT1-P1E-BR](#) [02.125.8002.8](#) [60101931](#) [60598-1 \(Cut Strip\)](#) [M1625-3R/100](#) [61062-3](#) [61082-181009](#) [636-1427](#) [638009-1](#) [641938-9](#) [641991-4](#) [644168-1](#) [647662-1](#) [65039-019ELF](#) [65817-002LF](#) [65817-015LF](#) [65863-015LF](#) [66207-023LF](#) [67016-026LF](#) [67046-001LF](#) [67095-007LF](#) [68002-116](#) [68016-236H](#) [68648-049](#)