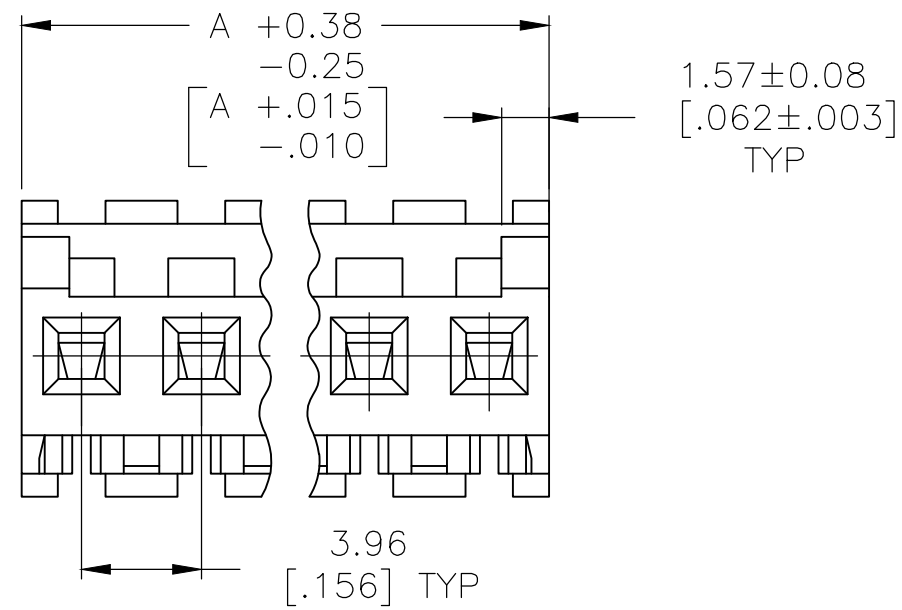
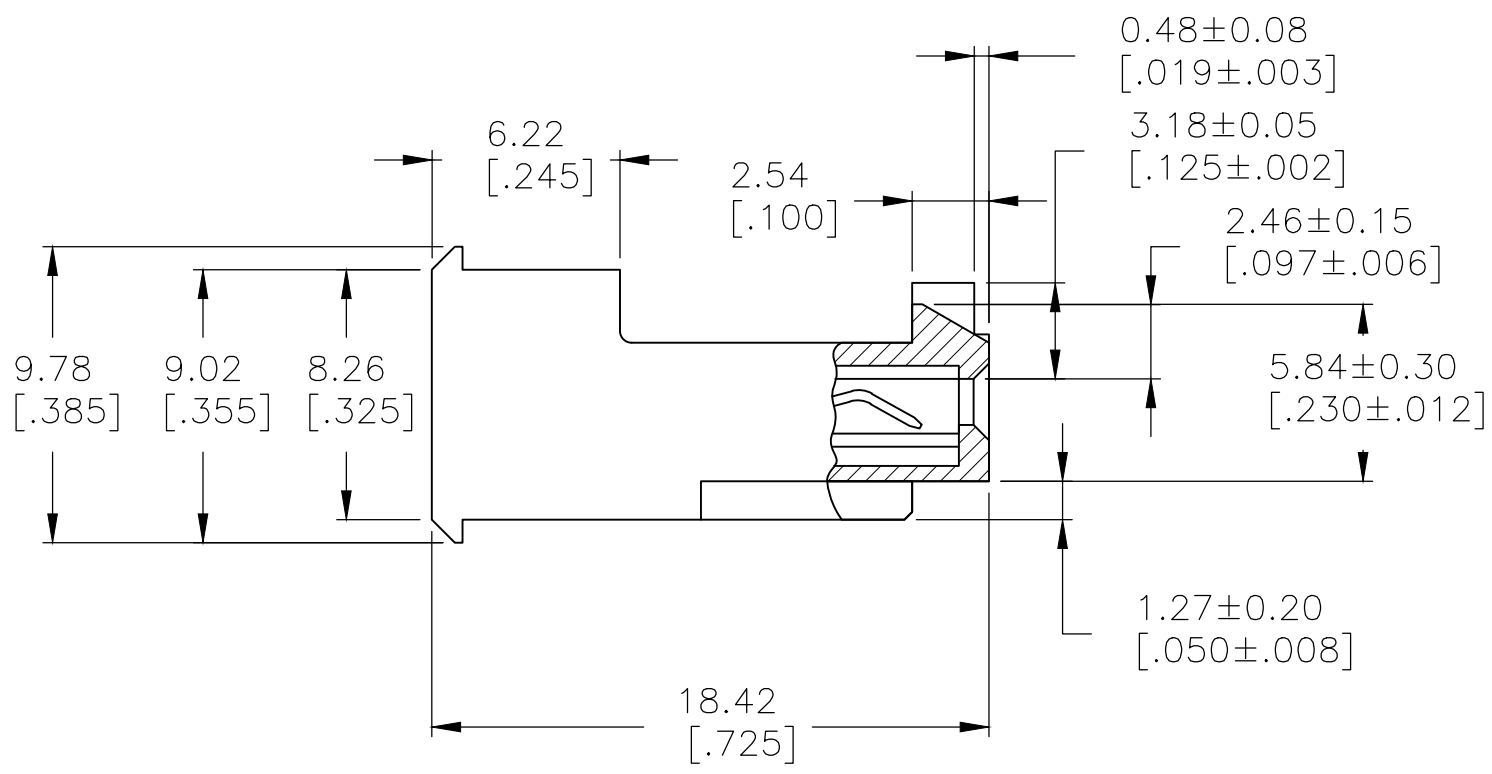
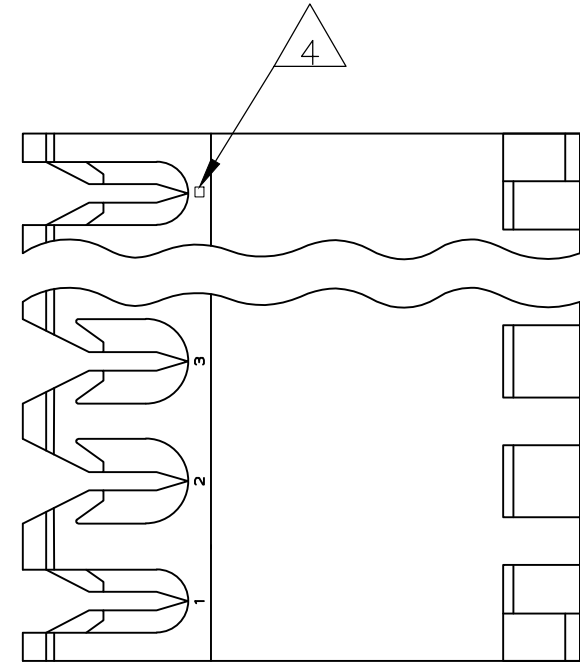


THIS DRAWING IS UNPUBLISHED. RELEASED FOR PUBLICATION
 © COPYRIGHT - By - TE CONNECTIVITY ALL RIGHTS RESERVED.

LOC	DIST	REVISIONS					
CM	00	P	LTR	DESCRIPTION	DATE	DWN	APVD
		F		REVISED PER ECR-20-000814	26MAY2020	PC	SW



55.47[2.184]	14	4-644465-4
51.51[2.028]	13	4-644465-3
47.55[1.872]	12	4-644465-2
43.59[1.716]	11	4-644465-1
39.62[1.560]	10	4-644465-0
35.66[1.404]	9	3-644465-9
31.70[1.248]	8	3-644465-8
27.74[1.092]	7	3-644465-7
23.77[.936]	6	3-644465-6
19.81[.780]	5	3-644465-5
15.85[.624]	4	3-644465-4
11.89[.468]	3	3-644465-3
7.92[.312]	2	3-644465-2
7 SUPERSEDED	14	1-644465-4
7 SUPERSEDED	13	1-644465-3
8 SUPERSEDED	12	1-644465-2
	11	1-644465-1
	10	1-644465-0
	9	644465-9
	8	644465-8
	7	644465-7
	6	644465-6
	5	644465-5
	4	644465-4
	3	644465-3
2	644465-2	

1 MATERIAL: CONNECTOR - NYLON UL94V-2 (ORANGE).
 CONTACTS - 0.30[.012] THICK COPPER ALLOY
 (BRIGHT TIN-LEAD 0.00203[.000080] MIN. THICK FOR CONTACTS 644465-2 THRU 1-644465-4)
 (WHISKER MITIGATED TIN 0.00203[.000080] MIN THICKNESS OVER NICKEL UNDERPLATE FOR 3-644465-2 THRU 4-644465-4).

- 2 CONTACTS ACCEPT 18 AWG WIRE WITH 2.41[.095] MAX INSULATION DIAMETER.
- 3 CONTACTS MUST ACCEPT 1.14±0.03[.045±.001] SQUARE POST AND REMAIN LOCKED IN POSITION.

- 4** IDENTIFICATION NUMBER FOR LAST CIRCUIT MAY NOT APPEAR ON ALL ASSEMBLIES.
- 5 DIMENSIONS IN BRACKETS ARE IN INCHES.
- 6 HOUSING FEATURES ARE: FEED-THRU WITH LOCKING RAMP AND POLARIZING TAB.

- 7** OBSOLETE PARTS: OBSOLETE CIS STREAMLINING PER D.RENAUD/D.SINISI
- 8** OBSOLETE PARTS

7 SUPERSEDED
7 SUPERSEDED
8 SUPERSEDED

DIM A NO. OF CIRCUITS PART NO.

THIS DRAWING IS A CONTROLLED DOCUMENT.		DWN S. CARPENTER 14AUG2003		
DIMENSIONS: mm [INCHES]		CHK D. BOSSI 14AUG2003		
TOLERANCES UNLESS OTHERWISE SPECIFIED:		APVD D. BOSSI 14AUG2003	NAME MTA 156 CONNECTOR ASSEMBLY, 18 AWG, STANDARD	
0 PLC ± -		PRODUCT SPEC 108-1051	SIZE A2	
1 PLC ± -		APPLICATION SPEC 114-1020	CAGE CODE 00779	DRAWING NO C-644465
2 PLC ± -		MATERIAL 1	RESTRICTED TO -	
3 PLC ± 0.13 [.005]		FINISH 1	SCALE 4:1	SHEET 1 OF 1
4 PLC ± -		CUSTOMER DRAWING	REV F	
ANGLES ± -				

X-ON Electronics

Largest Supplier of Electrical and Electronic Components

Click to view similar products for [Headers & Wire Housings](#) category:

Click to view products by [TE Connectivity](#) manufacturer:

Other Similar products are found below :

[95000-104TRLF](#) [10135584-644402LF](#) [DF62W-EP2022PCA](#) [95000-106TRLF](#) [DF62W-2022SCA](#) [DF62W-EP2022PC](#) [2203348](#) [DF62W-2022SC](#) [1084018](#) [1029039](#) [1084017](#) [802-10-012-10-002000](#) [1112640](#) [1112639](#) [000-34000](#) [0009482033](#) [0009507031](#) [57102-S06-03LF](#) [57202-S52-04LF](#) [PCN6-15S-2.5E](#) [0039019024](#) [58102-G61-06LF](#) [582553-1](#) [0009508121](#) [0050291907](#) [018731A](#) [LY20-4P-DT1-P1E-BR](#) [02.125.8002.8](#) [60101931](#) [60598-1 \(Cut Strip\)](#) [M1625-3R/100](#) [61062-3](#) [61082-181009](#) [636-1427](#) [638009-1](#) [641938-9](#) [641991-4](#) [644168-1](#) [647662-1](#) [65039-019ELF](#) [65817-002LF](#) [65817-015LF](#) [65863-015LF](#) [66207-023LF](#) [67016-026LF](#) [67046-001LF](#) [67095-007LF](#) [68002-116](#) [68016-236H](#) [68648-049](#)