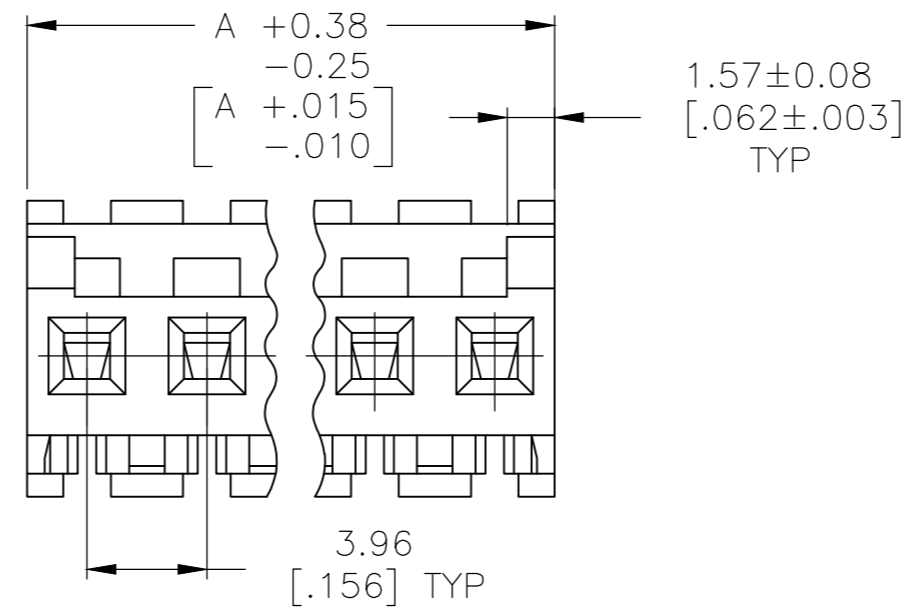
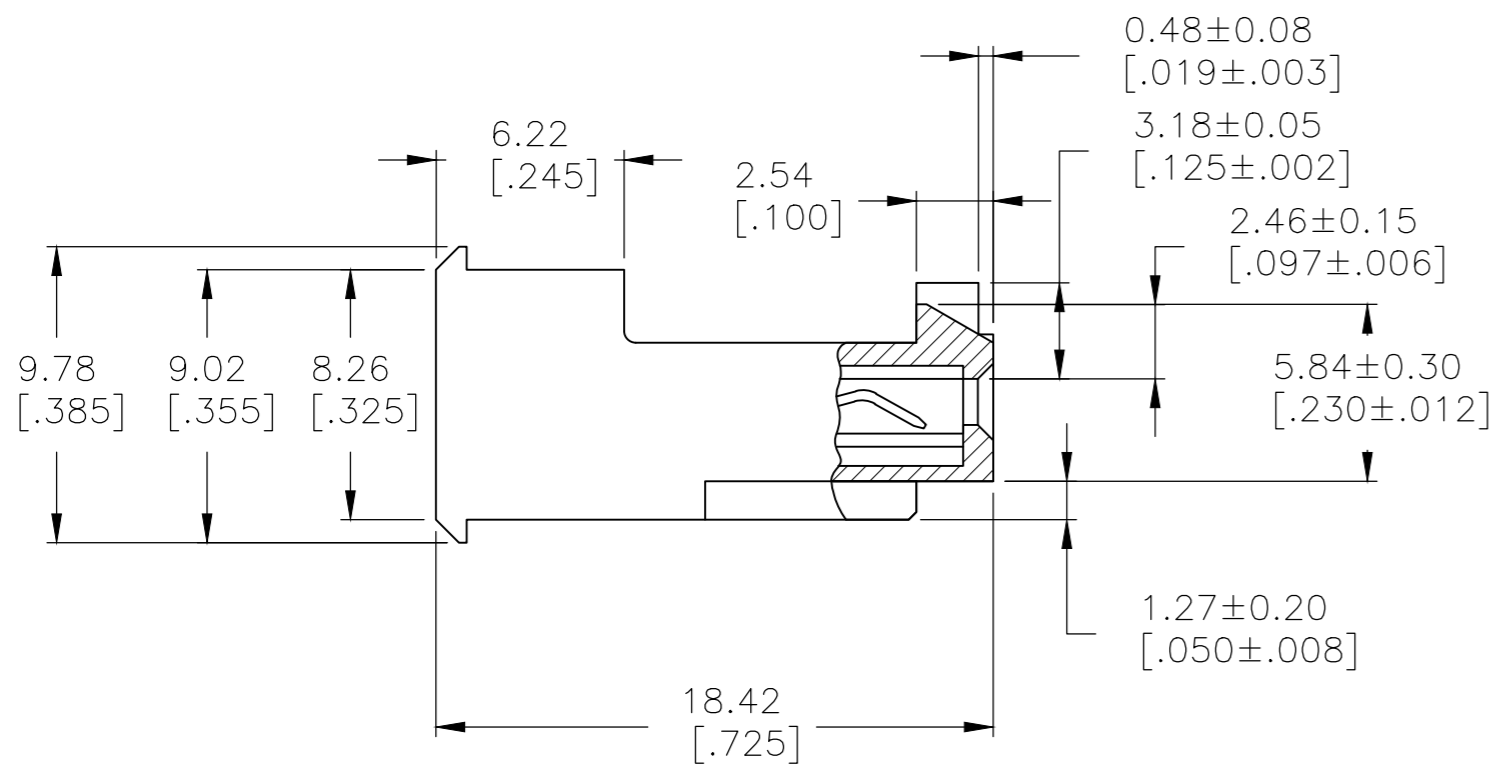
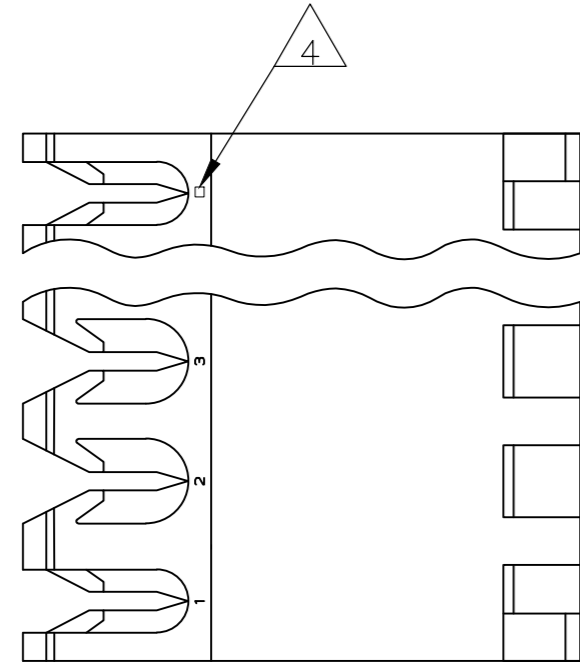


THIS DRAWING IS UNPUBLISHED. RELEASED FOR PUBLICATION
 © COPYRIGHT - By - TE CONNECTIVITY ALL RIGHTS RESERVED.

LOC	DIST	REVISIONS			
P	LTR	DESCRIPTION	DATE	DWN	APVD
CM	00	F	REVISED PER ECR-20-000814	26MAY2020	PC SW



1 MATERIAL: CONNECTOR - NYLON UL94V-2 (ORANGE).
 CONTACTS - 0.30[.012] THICK COPPER ALLOY
 (BRIGHT TIN-LEAD 0.00203[.000080] MIN. THICK
 FOR CONTACTS 644465-2 THRU 1-644465-4)
 (WHISKER MITIGATED TIN 0.00203[.000080] MIN
 THICKNESS OVER NICKEL UNDERPLATE FOR
 3-644465-2 THRU 4-644465-4).

2 CONTACTS ACCEPT 18 AWG WIRE WITH 2.41[.095] MAX INSULATION DIAMETER.
 3 CONTACTS MUST ACCEPT 1.14±0.03[.045±.001] SQUARE POST AND REMAIN LOCKED IN POSITION.

4 IDENTIFICATION NUMBER FOR LAST CIRCUIT MAY NOT APPEAR ON ALL ASSEMBLIES.

5 DIMENSIONS IN BRACKETS ARE IN INCHES.

6 HOUSING FEATURES ARE: FEED-THRU WITH LOCKING RAMP AND POLARIZING TAB.

7 OBSOLETE PARTS: OBSOLETE CIS STREAMLINING PER D.RENAUD/D.SINISI

8 OBSOLETE PARTS

55.47[2.184]	14	4-644465-4
51.51[2.028]	13	4-644465-3
47.55[1.872]	12	4-644465-2
43.59[1.716]	11	4-644465-1
39.62[1.560]	10	4-644465-0
35.66[1.404]	9	3-644465-9
31.70[1.248]	8	3-644465-8
27.74[1.092]	7	3-644465-7
23.77[.936]	6	3-644465-6
19.81[.780]	5	3-644465-5
15.85[.624]	4	3-644465-4
11.89[.468]	3	3-644465-3
7.92[.312]	2	3-644465-2
7 SUPERSEDED	14	1-644465-4
7 SUPERSEDED	13	1-644465-3
8 SUPERSEDED	12	1-644465-2
	11	1-644465-1
	10	1-644465-0
	9	644465-9
	8	644465-8
	7	644465-7
	6	644465-6
	5	644465-5
	4	644465-4
	3	644465-3
2	644465-2	

7 SUPERSEDED
 7 SUPERSEDED
 8 SUPERSEDED

DIM A	NO. OF CIRCUITS	PART NO.
-------	-----------------	----------

THIS DRAWING IS A CONTROLLED DOCUMENT.		DWN S. CARPENTER 14AUG2003		
DIMENSIONS: mm [INCHES]		CHK D. BOSSI 14AUG2003		
TOLERANCES UNLESS OTHERWISE SPECIFIED:		APVD D. BOSSI 14AUG2003	NAME MTA 156 CONNECTOR ASSEMBLY, 18 AWG, STANDARD	
0 PLC ± - 1 PLC ± - 2 PLC ± - 3 PLC ± 0.13 [.005] 4 PLC ± - ANGLES ± -		PRODUCT SPEC 108-1051	RESTRICTED TO	
MATERIAL 1		APPLICATION SPEC 114-1020	SIZE A2	CAGE CODE 00779
FINISH 1		WEIGHT	DRAWING NO C-644465	SCALE 4:1
		CUSTOMER DRAWING	SHEET 1 OF 1	REV F

X-ON Electronics

Largest Supplier of Electrical and Electronic Components

Click to view similar products for [Headers & Wire Housings](#) category:

Click to view products by [TE Connectivity](#) manufacturer:

Other Similar products are found below :

[892-18-020-10-001101](#) [58102-G61-06LF](#) [582553-1](#) [0009485154](#) [009176003701906](#) [0050291907](#) [LY20-4P-DT1-P1E-BR](#) [02.125.8002.8](#)
[609-3404](#) [61062-3](#) [61082-181009](#) [622-3653LF](#) [63453-116](#) [636-1030](#) [636-1427](#) [636-3427](#) [636-4007](#) [641938-9](#) [641991-4](#) [644827-2](#) [65817-010LF](#) [65817-015LF](#) [65863-015LF](#) [66207-023LF](#) [67095-007LF](#) [67601157](#) [68645-018](#) [68648-049](#) [70.362.1628.0](#) [70-4210](#) [70-4226B](#) [70-4853B](#) [707-5020](#) [707-5028](#) [71.350.2428.0](#) [71918-208LF](#) [71961-016LF](#) [733-134](#) [733-162](#) [754199-000](#) [760-3052](#) [787-8014-00](#) [79531-3000](#)
[FCN-360C032-B](#) [FCN-367T-T012/H](#) [FCN-723D010/2](#) [80.063.4001.1](#) [800-90-001-10-001000](#) [800-90-010-10-002000](#) [801-43-002-10-013000](#)