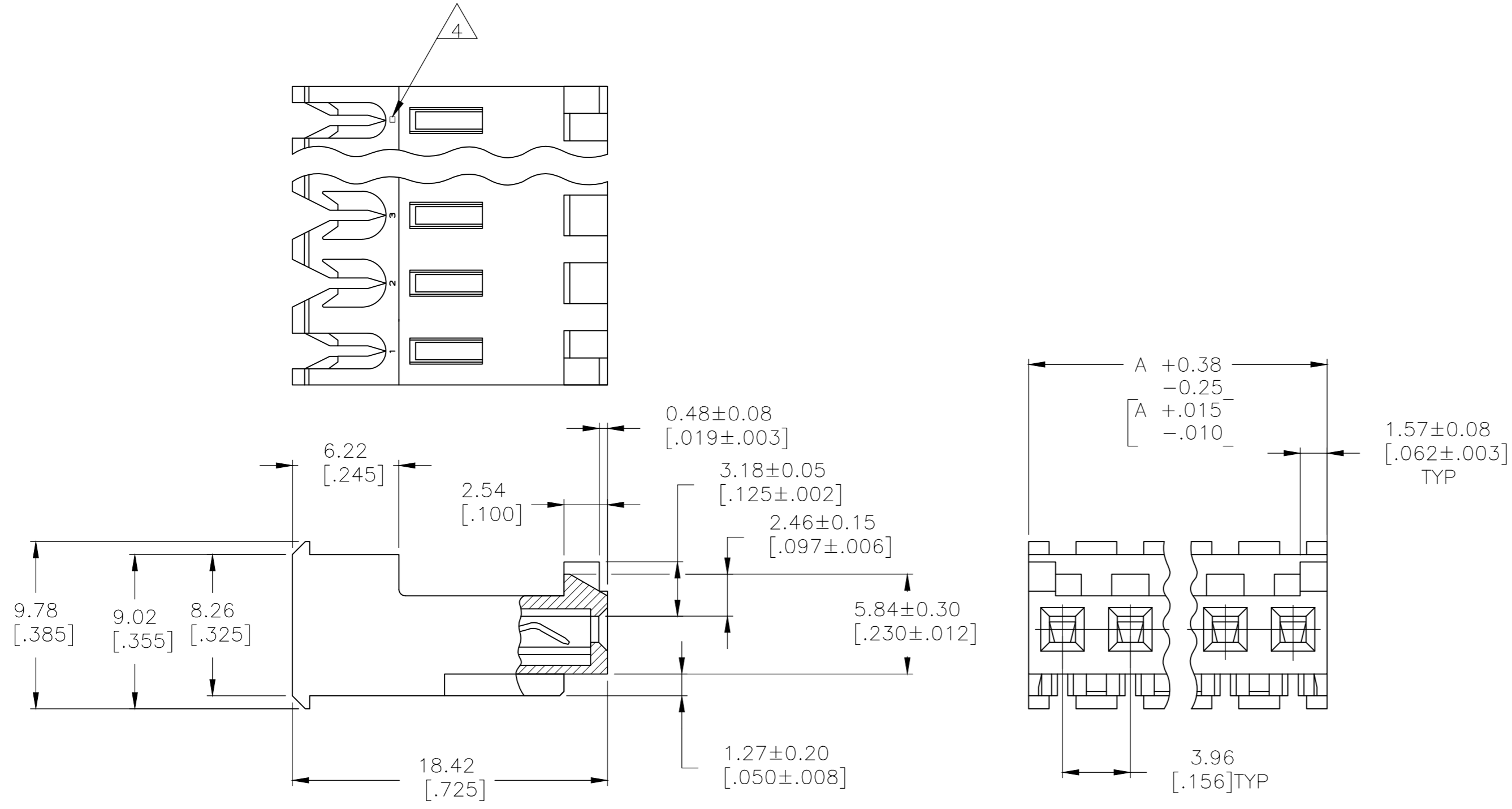


THIS DRAWING IS UNPUBLISHED. RELEASED FOR PUBLICATION
 © COPYRIGHT - By - TE CONNECTIVITY ALL RIGHTS RESERVED.

LOC		DIST		REVISIONS			
P	LTR	DESCRIPTION		DATE	DWN	APVD	
CM	00	F		REVISED PER ECR-20-000820	27MAY2020	PC SW	



55.47[2.184]	14	4-644466-4
51.51[2.028]	13	4-644466-3
47.55[1.872]	12	4-644466-2
43.59[1.716]	11	4-644466-1
39.62[1.560]	10	4-644466-0
35.66[1.404]	9	3-644466-9
31.70[1.248]	8	3-644466-8
27.74[1.092]	7	3-644466-7
23.77[.936]	6	3-644466-6
19.81[.780]	5	3-644466-5
15.85[.624]	4	3-644466-4
11.89[.468]	3	3-644466-3
7.92[.312]	2	3-644466-2

- 1 MATERIAL: CONNECTOR - NYLON UL94V-2 (YELLOW).
CONTACTS - 0.30[.012] THICK COPPER ALLOY (BRIGHT TIN-LEAD 0.00203[.000080] MIN. THICK FOR CONTACTS 644466-2 THRU 1-644466-4) (MATTE WHISKER MITIGATED TIN 0.00203[.000080] MIN THICKNESS OVER NICKEL UNDERPLATE FOR 3-644466-2 THRU 4-644466-4).
- 2 CONTACTS ACCEPT 20 AWG WIRE WITH 2.41[.095] MAX INSULATION DIAMETER.
- 3 CONTACTS MUST ACCEPT 1.14±0.03[.045±.001] SQUARE POST AND REMAIN LOCKED IN POSITION.
- 4 IDENTIFICATION NUMBER FOR LAST CIRCUIT MAY NOT APPEAR ON ALL ASSEMBLIES.
- 5 DIMENSIONS IN BRACKETS ARE IN INCHES.
- 6 HOUSING FEATURES ARE: FEED-THRU WITH LOCKING RAMP AND POLARIZING TAB.
- 7 OBSOLETE PARTS: OBSOLETE CIS STREAMLINING PER D.RENAUD/D.SINISI
- 8 OBSOLETE PARTS

8	SUPERSEDED BY 4-644466-4	55.47[2.184]	14	4-644466-4
8	SUPERSEDED BY 4-644466-3	51.51[2.028]	13	4-644466-3
7	SUPERSEDED BY 4-644466-2	47.55[1.872]	12	4-644466-2
7	SUPERSEDED BY 4-644466-1	43.59[1.716]	11	4-644466-1
8	SUPERSEDED BY 4-644466-0	39.62[1.560]	10	4-644466-0
7	SUPERSEDED BY 3-644466-9	35.66[1.404]	9	3-644466-9
8	SUPERSEDED BY 3-644466-8	31.70[1.248]	8	3-644466-8
7	SUPERSEDED BY 3-644466-7	27.74[1.092]	7	3-644466-7
7	SUPERSEDED BY 3-644466-6	23.77[.936]	6	3-644466-6
7	SUPERSEDED BY 3-644466-5	19.81[.780]	5	3-644466-5
8	SUPERSEDED BY 3-644466-4	15.85[.624]	4	3-644466-4
7	SUPERSEDED BY 3-644466-3	11.89[.468]	3	3-644466-3
8	SUPERSEDED BY 3-644466-2	7.92[.312]	2	3-644466-2

DIM A NO OF CIRCUITS PART NO.

THIS DRAWING IS A CONTROLLED DOCUMENT.		DWN S. CARPENTER 14AUG2003		
DIMENSIONS: mm [INCHES]		CHK D.BOSSI 14AUG2003		
TOLERANCES UNLESS OTHERWISE SPECIFIED:		APVD D.BOSSI 14AUG2003	NAME	
0 PLC ± -	1 PLC ± -	PRODUCT SPEC 108-1051	MTA 156 CONNECTOR ASSEMBLY, 20 AWG, STANDARD	
2 PLC ± -	3 PLC ± 0.13 [.005]	APPLICATION SPEC 114-1020	SIZE A2	CAGE CODE 00779
4 PLC ± -	ANGLES ± -	WEIGHT	DRAWING NO C-644466	RESTRICTED TO -
MATERIAL 1	FINISH 1	CUSTOMER DRAWING	SCALE 4:1	SHEET 1 OF 1
			REV F	

X-ON Electronics

Largest Supplier of Electrical and Electronic Components

Click to view similar products for [Headers & Wire Housings](#) category:

Click to view products by [TE Connectivity](#) manufacturer:

Other Similar products are found below :

[95000-104TRLF](#) [10135584-644402LF](#) [DF62W-EP2022PCA](#) [95000-106TRLF](#) [DF62W-2022SCA](#) [DF62W-EP2022PC](#) [2203348](#) [DF62W-2022SC](#) [1084018](#) [1029039](#) [1084017](#) [802-10-012-10-002000](#) [1112640](#) [1112639](#) [000-34000](#) [0009482033](#) [0009507031](#) [57102-S06-03LF](#) [57202-S52-04LF](#) [PCN6-15S-2.5E](#) [0039019024](#) [58102-G61-06LF](#) [582553-1](#) [0009508121](#) [0050291907](#) [018731A](#) [LY20-4P-DT1-P1E-BR](#) [02.125.8002.8](#) [60101931](#) [60598-1 \(Cut Strip\)](#) [M1625-3R/100](#) [61062-3](#) [61082-181009](#) [636-1427](#) [638009-1](#) [641938-9](#) [641991-4](#) [644168-1](#) [647662-1](#) [65039-019ELF](#) [65817-002LF](#) [65817-015LF](#) [65863-015LF](#) [66207-023LF](#) [67016-026LF](#) [67046-001LF](#) [67095-007LF](#) [68002-116](#) [68016-236H](#) [68648-049](#)