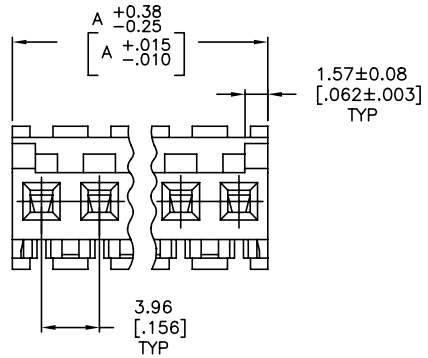
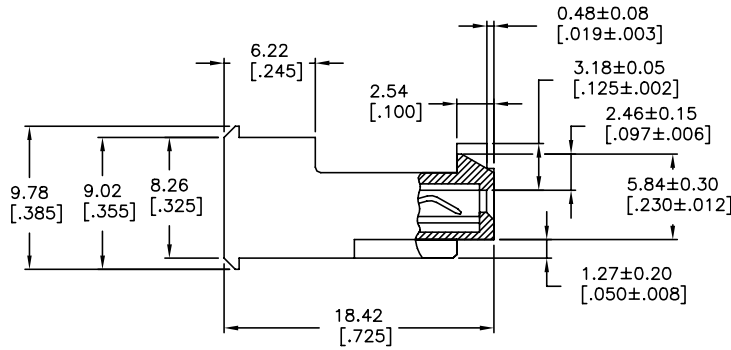
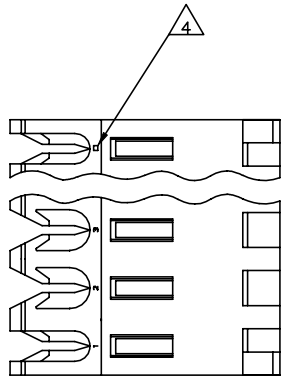


THIS DRAWING IS UNPUBLISHED. RELEASED FOR PUBLICATION
 © COPYRIGHT - TE Connectivity Ltd. ALL RIGHTS RESERVED.

REVISIONS					
P	LYR	DESCRIPTION	DATE	DWN	APVD
E		REVISED PER ECR-20-000824	29MAY2020	PC	SW



1 MATERIAL: CONNECTOR - NYLON UL94V-2 (WHITE).
 CONTACTS - 0.30[.012] THICK COPPER ALLOY
 BRIGHT TIN-LEAD 0.00203[.000080] MIN THICK
 FOR CONTACTS 644468-2 THRU 1-644468-4
 MATTE WHISKER MITIGATED TIN 0.00203[.000080] MIN
 THICKNESS OVER NICKEL UNDERPLATE FOR
 3-644468-2 THRU 4-644468-4

- 2. CONTACTS ACCEPT 24 AWG WIRE WITH 2.41[.095] MAX INSULATION DIAMETER.
- 3. CONTACTS MUST ACCEPT 1.14±0.03[.045±.001] SQUARE POST AND REMAIN LOCKED IN POSITION.
- 4 IDENTIFICATION NUMBER FOR LAST CIRCUIT MAY NOT APPEAR ON ALL ASSEMBLIES.
- 5. DIMENSIONS IN BRACKETS ARE IN INCHES.
- 6. HOUSING FEATURES ARE: FEED-THRU WITH LOCKING RAMP AND POLARIZING TAB.

7 OBSOLETE PARTS: OBSOLETE CIS STREAMLINING PER D.RENAUD/D.SINISI
 8 OBSOLETE PARTS

55.47	[2.184]	14	4-644468-4
51.51	[2.028]	13	4-644468-3
47.55	[1.872]	12	4-644468-2
43.59	[1.716]	11	4-644468-1
39.62	[1.560]	10	4-644468-0
35.66	[1.404]	9	3-644468-9
31.70	[1.248]	8	3-644468-8
27.74	[1.092]	7	3-644468-7
23.77	[.936]	6	3-644468-6
19.81	[.780]	5	3-644468-5
15.85	[.624]	4	3-644468-4
11.89	[.468]	3	3-644468-3
7.92	[.312]	2	3-644468-2
55.47	[2.184]	14	1-644468-4
51.51	[2.028]	13	1-644468-3
47.55	[1.872]	12	1-644468-2
43.59	[1.716]	11	1-644468-1
39.62	[1.560]	10	1-644468-0
35.66	[1.404]	9	644468-9
31.70	[1.248]	8	644468-8
27.74	[1.092]	7	644468-7
23.77	[.936]	6	644468-6
19.81	[.780]	5	644468-5
15.85	[.624]	4	644468-4
11.89	[.468]	3	644468-3
7.92	[.312]	2	644468-2
DIM A		NO. OF CIRCUITS	PART NO

THIS DRAWING IS A CONTROLLED DOCUMENT.

DWN: B. LEWIS 12 FEB 91
 CHK: R. SWING 12 FEB 91
 APVD: D. CLARK 20 FEB 91

TE Connectivity Ltd.

MTA-156 CONNECTOR ASSEMBLY, 24 AWG, STANDARD

SIZE: A2 CAGE CODE: 00779 DRAWING NO: 644468

CUSTOMER DRAWING SCALE: 4:1 SHEET: 1 of 1 REV: E

X-ON Electronics

Largest Supplier of Electrical and Electronic Components

Click to view similar products for [Headers & Wire Housings](#) category:

Click to view products by [TE Connectivity](#) manufacturer:

Other Similar products are found below :

[95000-104TRLF](#) [10135584-644402LF](#) [DF62W-EP2022PCA](#) [95000-106TRLF](#) [DF62W-2022SCA](#) [DF62W-EP2022PC](#) [2203348](#) [DF62W-2022SC](#) [1084018](#) [1029039](#) [1084017](#) [802-10-012-10-002000](#) [1112640](#) [1112639](#) [000-34000](#) [0009482033](#) [0009507031](#) [57102-S06-03LF](#) [57202-S52-04LF](#) [PCN6-15S-2.5E](#) [0039019024](#) [58102-G61-06LF](#) [582553-1](#) [0009508121](#) [0050291907](#) [018731A](#) [LY20-4P-DT1-P1E-BR](#) [02.125.8002.8](#) [60101931](#) [60598-1 \(Cut Strip\)](#) [M1625-3R/100](#) [61062-3](#) [61082-181009](#) [636-1427](#) [638009-1](#) [641938-9](#) [641991-4](#) [644168-1](#) [647662-1](#) [65039-019ELF](#) [65817-002LF](#) [65817-015LF](#) [65863-015LF](#) [66207-023LF](#) [67016-026LF](#) [67046-001LF](#) [67095-007LF](#) [68002-116](#) [68016-236H](#) [68648-049](#)