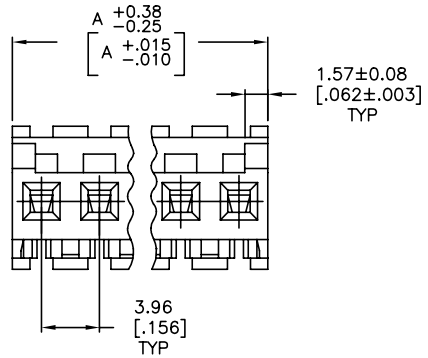
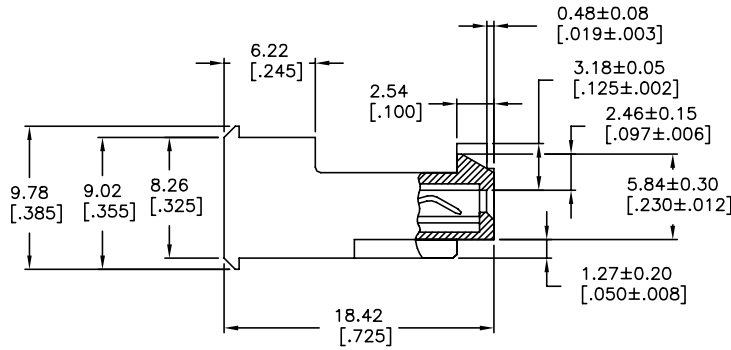
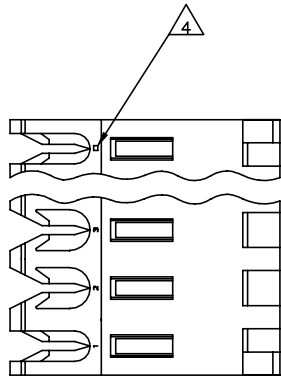


THIS DRAWING IS UNPUBLISHED. RELEASED FOR PUBLICATION
 © COPYRIGHT - TE Connectivity Ltd. ALL RIGHTS RESERVED.

REVISIONS					
P	LYR	DESCRIPTION	DATE	DWN	APVD
E		REVISED PER ECR-20-000824	29MAY2020	PC	SW



1 MATERIAL: CONNECTOR - NYLON UL94V-2 (WHITE).
 CONTACTS - 0.30[.012] THICK COPPER ALLOY
 BRIGHT TIN-LEAD 0.00203[.000080] MIN THICK
 FOR CONTACTS 644468-2 THRU 1-644468-4
 MATTE WHISKER MITIGATED TIN 0.00203[.000080] MIN
 THICKNESS OVER NICKEL UNDERPLATE FOR
 3-644468-2 THRU 4-644468-4

- 2. CONTACTS ACCEPT 24 AWG WIRE WITH 2.41[.095] MAX INSULATION DIAMETER.
- 3. CONTACTS MUST ACCEPT 1.14±0.03[.045±.001] SQUARE POST AND REMAIN LOCKED IN POSITION.
- 4 IDENTIFICATION NUMBER FOR LAST CIRCUIT MAY NOT APPEAR ON ALL ASSEMBLIES.
- 5. DIMENSIONS IN BRACKETS ARE IN INCHES.
- 6. HOUSING FEATURES ARE: FEED-THRU WITH LOCKING RAMP AND POLARIZING TAB.

7 OBSOLETE PARTS: OBSOLETE CIS STREAMLINING PER D.RENAUD/D.SINISI
 8 OBSOLETE PARTS

55.47	[2.184]	14	4-644468-4
51.51	[2.028]	13	4-644468-3
47.55	[1.872]	12	4-644468-2
43.59	[1.716]	11	4-644468-1
39.62	[1.560]	10	4-644468-0
35.66	[1.404]	9	3-644468-9
31.70	[1.248]	8	3-644468-8
27.74	[1.092]	7	3-644468-7
23.77	[.936]	6	3-644468-6
19.81	[.780]	5	3-644468-5
15.85	[.624]	4	3-644468-4
11.89	[.468]	3	3-644468-3
7.92	[.312]	2	3-644468-2
55.47	[2.184]	14	1-644468-4
51.51	[2.028]	13	1-644468-3
47.55	[1.872]	12	1-644468-2
43.59	[1.716]	11	1-644468-1
39.62	[1.560]	10	1-644468-0
35.66	[1.404]	9	644468-9
31.70	[1.248]	8	644468-8
27.74	[1.092]	7	644468-7
23.77	[.936]	6	644468-6
19.81	[.780]	5	644468-5
15.85	[.624]	4	644468-4
11.89	[.468]	3	644468-3
7.92	[.312]	2	644468-2
DIM A		NO. OF CIRCUITS	PART NO

THIS DRAWING IS A CONTROLLED DOCUMENT.

DIMENSIONS: mm [INCHES]	TOLERANCES UNLESS OTHERWISE SPECIFIED:	DWN E. LEWIS 12 FEB 91	12 FEB 91
0 PLC ± -	1 PLC ± -	CHK R. SWING	12 FEB 91
2 PLC ± -	3 PLC ± -	APVD D. CLARK	20 FEB 91
4 PLC ± -	ANGLES ± -	NAME	
MATERIAL	FINISH	PRODUCT SPEC	
		108-1051	
		APPLICATION SPEC	
		114-1020	
		SIZE	CAGE CODE
		A2	00779
		DRAWING NO	644468
		RESTRICTED TO	
		CUSTOMER DRAWING	

TE Connectivity Ltd.
 MTA-156 CONNECTOR ASSEMBLY,
 24 AWG, STANDARD

SCALE 4:1 SHEET 1 of 1 REV E

X-ON Electronics

Largest Supplier of Electrical and Electronic Components

Click to view similar products for [Headers & Wire Housings](#) category:

Click to view products by [TE Connectivity](#) manufacturer:

Other Similar products are found below :

[892-18-020-10-001101](#) [58102-G61-06LF](#) [582553-1](#) [0009485154](#) [009176003701906](#) [0050291907](#) [LY20-4P-DT1-P1E-BR](#) [02.125.8002.8](#)
[609-3404](#) [61062-3](#) [61082-181009](#) [622-3653LF](#) [63453-116](#) [636-1030](#) [636-1427](#) [636-3427](#) [636-4007](#) [641938-9](#) [641991-4](#) [644827-2](#) [65817-010LF](#) [65817-015LF](#) [65863-015LF](#) [66207-023LF](#) [67095-007LF](#) [67601157](#) [68645-018](#) [68648-049](#) [70.362.1628.0](#) [70-4210](#) [70-4226B](#) [70-4853B](#) [707-5020](#) [707-5028](#) [71.350.2428.0](#) [71918-208LF](#) [71961-016LF](#) [733-134](#) [733-162](#) [754199-000](#) [760-3052](#) [787-8014-00](#) [79531-3000](#)
[FCN-360C032-B](#) [FCN-367T-T012/H](#) [FCN-723D010/2](#) [80.063.4001.1](#) [800-90-001-10-001000](#) [800-90-010-10-002000](#) [801-43-002-10-013000](#)