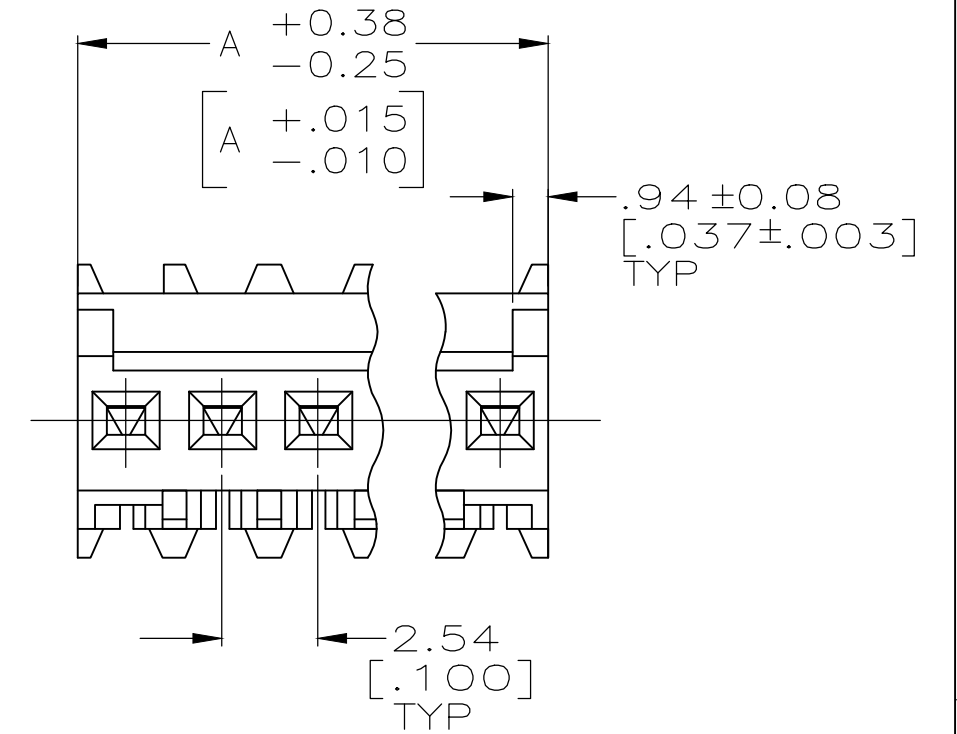
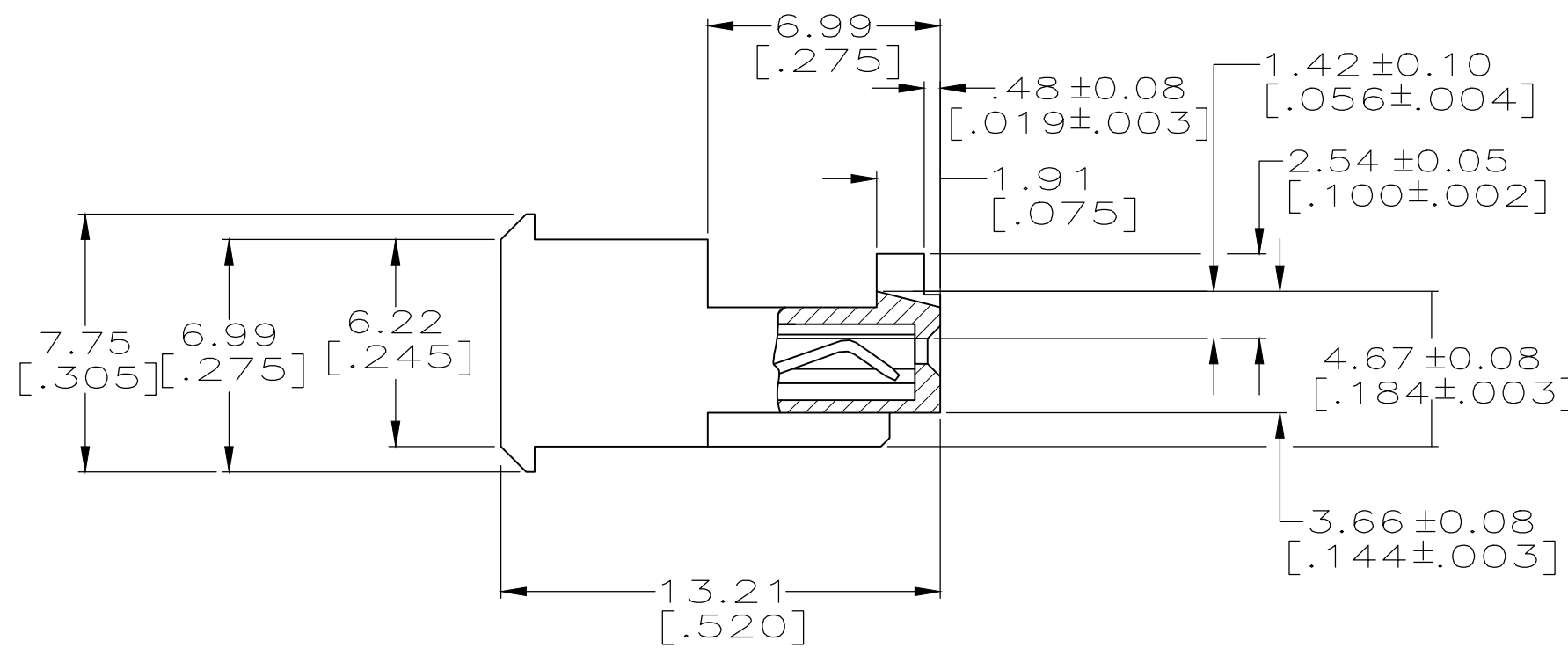
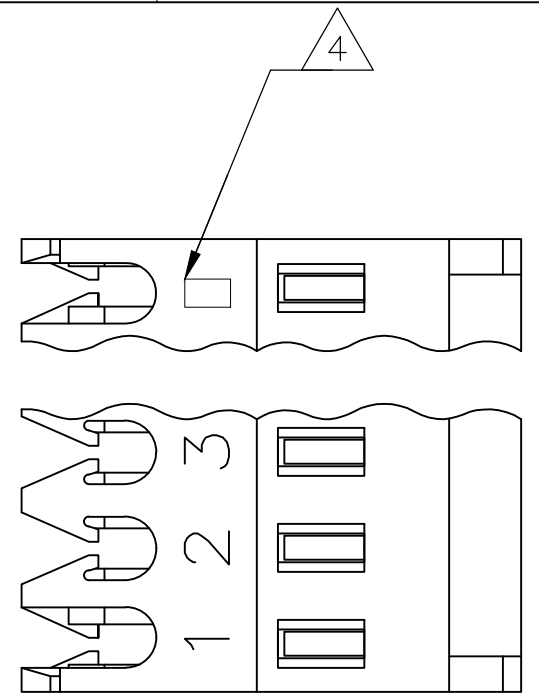


THIS DRAWING IS UNPUBLISHED. RELEASED FOR PUBLICATION
 © COPYRIGHT - By - ALL RIGHTS RESERVED.

LOC		DIST		REVISIONS			
P	LTR	DESCRIPTION		DATE	DWN	APVD	
CM	00	F		REVISED PER ECR-20-000541	09MAR2020	PC	SW



1 MATERIAL: CONNECTOR - NYLON UL94V-2 (RED).
 CONTACTS - 0.30[.012] THICK COPPER ALLOY
 BRIGHT TIN-LEAD .00203[.000080] MIN THICKNESS
 FOR 644540-2 THRU 2-644540-8.
 MATTE WHISKER MITIGATED TIN .00203[.000080] MIN THICKNESS OVER
 NICKEL UNDERPLATE FOR 3-644540-2 THRU 4-644540-5.

2 CONTACTS ACCEPT 22 AWG WIRE WITH 1.52[.060] MAX
 INSULATION DIAMETER.

3 CONTACTS MUST ACCEPT 0.64±0.03[.025±.001] SQUARE
 POST AND REMAIN LOCKED IN POSITION.

4 IDENTIFICATION NUMBER FOR LAST CIRCUIT MAY
 NOT APPEAR ON ALL ASSEMBLIES.

5 DIMENSIONS IN BRACKETS ARE IN INCHES.

6 HOUSING FEATURES ARE: FEED THRU WITH
 LOCKING RAMP AND WITH POLARIZING TAB.

7 OBSOLETE PARTS: OBSOLETE CIS STREAMLINING PER D.RENAUD/D.SINISI

8 OBSOLETE PARTS

YES	DIM A	NO. OF CIRCUITS	PART NO.
YES	38.10[1.500]	15	4-644540-5
YES	35.56[1.400]	14	4-644540-4
YES	33.02[1.300]	13	4-644540-3
YES	30.48[1.200]	12	4-644540-2
YES	27.94[1.100]	11	4-644540-1
YES	25.40[1.000]	10	4-644540-0
YES	22.86[.900]	9	3-644540-9
YES	20.32[.800]	8	3-644540-8
YES	17.78[.700]	7	3-644540-7
YES	15.24[.600]	6	3-644540-6
YES	12.70[.500]	5	3-644540-5
YES	10.16[.400]	4	3-644540-4
YES	7.62[.300]	3	3-644540-3
YES	5.08[.200]	2	3-644540-2

NO	DIM A	NO. OF CIRCUITS	PART NO.	REVISION	DESCRIPTION
NO	38.10[1.500]	15	1-644540-5	7	SUPERSEDED BY 4-644540-5
NO	35.56[1.400]	14	1-644540-4	8	SUPERSEDED BY 4-644540-4
NO	33.02[1.300]	13	1-644540-3	7	SUPERSEDED BY 4-644540-3
NO	30.48[1.200]	12	1-644540-2	8	SUPERSEDED BY 4-644540-2
NO	27.94[1.100]	11	1-644540-1	8	SUPERSEDED BY 4-644540-1
NO	25.40[1.000]	10	1-644540-0	7	SUPERSEDED BY 4-644540-0
NO	22.86[.900]	9	-644540-9	8	SUPERSEDED BY 3-644540-9
NO	20.32[.800]	8	-644540-8	8	SUPERSEDED BY 3-644540-8
NO	17.78[.700]	7	-644540-7	8	SUPERSEDED BY 3-644540-7
NO	15.24[.600]	6	-644540-6	8	SUPERSEDED BY 3-644540-6
NO	12.70[.500]	5	-644540-5	8	SUPERSEDED BY 3-644540-5
NO	10.16[.400]	4	-644540-4	8	SUPERSEDED BY 3-644540-4
NO	7.62[.300]	3	-644540-3	8	SUPERSEDED BY 3-644540-3
NO	5.08[.200]	2	-644540-2	8	SUPERSEDED BY 3-644540-2

LEADFREE DIM A NO. OF CIRCUITS PART NO.

THIS DRAWING IS A CONTROLLED DOCUMENT.		DWN S. CARPENTER 12JUN2003	TE Connectivity	
DIMENSIONS: mm [INCHES]		CHK D. BOSSI 12JUN2003		
TOLERANCES UNLESS OTHERWISE SPECIFIED:		APVD D. BOSSI 12JUN2003	NAME MTA 100 CONNECTOR ASSEMBLY, 22 AWG, STANDARD	
0 PLC ±		PRODUCT SPEC 108-1050	SIZE A2	
1 PLC ±		APPLICATION SPEC 114-1019	CAGE CODE 00779	DRAWING NO C=644540
2 PLC ±		WEIGHT	RESTRICTED TO	
3 PLC ± 0.13 [.005]		CUSTOMER DRAWING	SCALE 5:1	SHEET 1 of 1
4 PLC ANGLES ±			REV F	
MATERIAL 1	FINISH 1			

X-ON Electronics

Largest Supplier of Electrical and Electronic Components

Click to view similar products for [Headers & Wire Housings](#) category:

Click to view products by [TE Connectivity](#) manufacturer:

Other Similar products are found below :

[892-18-020-10-001101](#) [58102-G61-06LF](#) [582553-1](#) [0009485154](#) [009176003701906](#) [0050291907](#) [LY20-4P-DT1-P1E-BR](#) [02.125.8002.8](#)
[609-3404](#) [61062-3](#) [61082-181009](#) [622-3653LF](#) [63453-116](#) [636-1030](#) [636-1427](#) [636-3427](#) [636-4007](#) [641938-9](#) [641991-4](#) [644827-2](#) [65817-](#)
[010LF](#) [65817-015LF](#) [65863-015LF](#) [66207-023LF](#) [67095-007LF](#) [67601157](#) [68645-018](#) [68648-049](#) [70.362.1628.0](#) [70-4210](#) [70-4226B](#) [70-](#)
[4853B](#) [707-5020](#) [707-5028](#) [71.350.2428.0](#) [71918-208LF](#) [71961-016LF](#) [733-134](#) [733-162](#) [754199-000](#) [760-3052](#) [787-8014-00](#) [79531-3000](#)
[FCN-360C032-B](#) [FCN-367T-T012/H](#) [FCN-723D010/2](#) [80.063.4001.1](#) [800-90-001-10-001000](#) [800-90-010-10-002000](#) [801-43-002-10-013000](#)