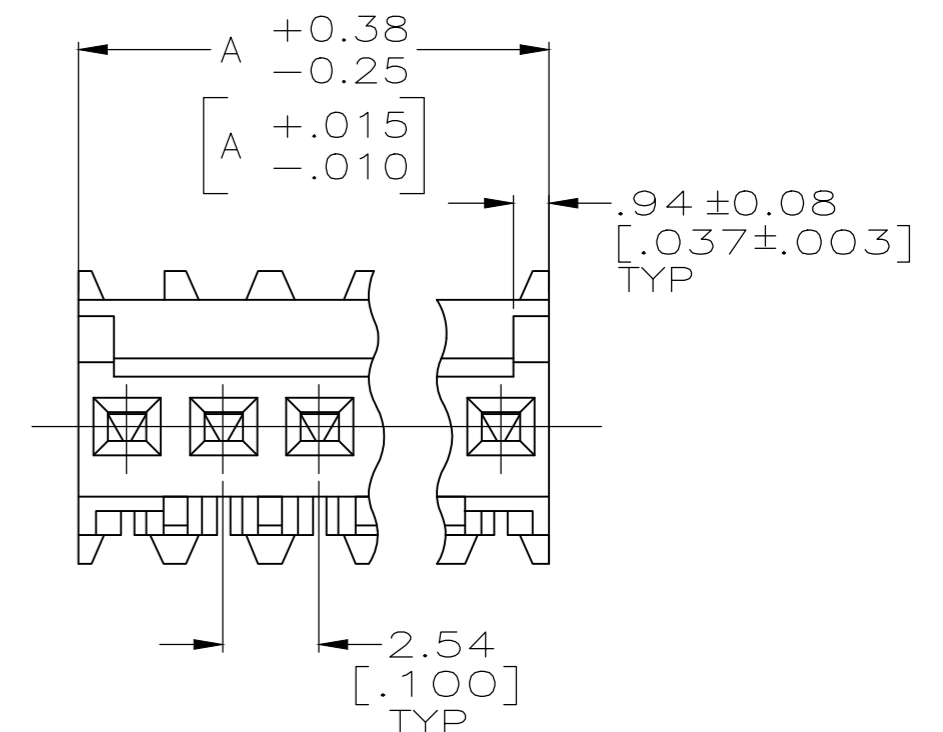
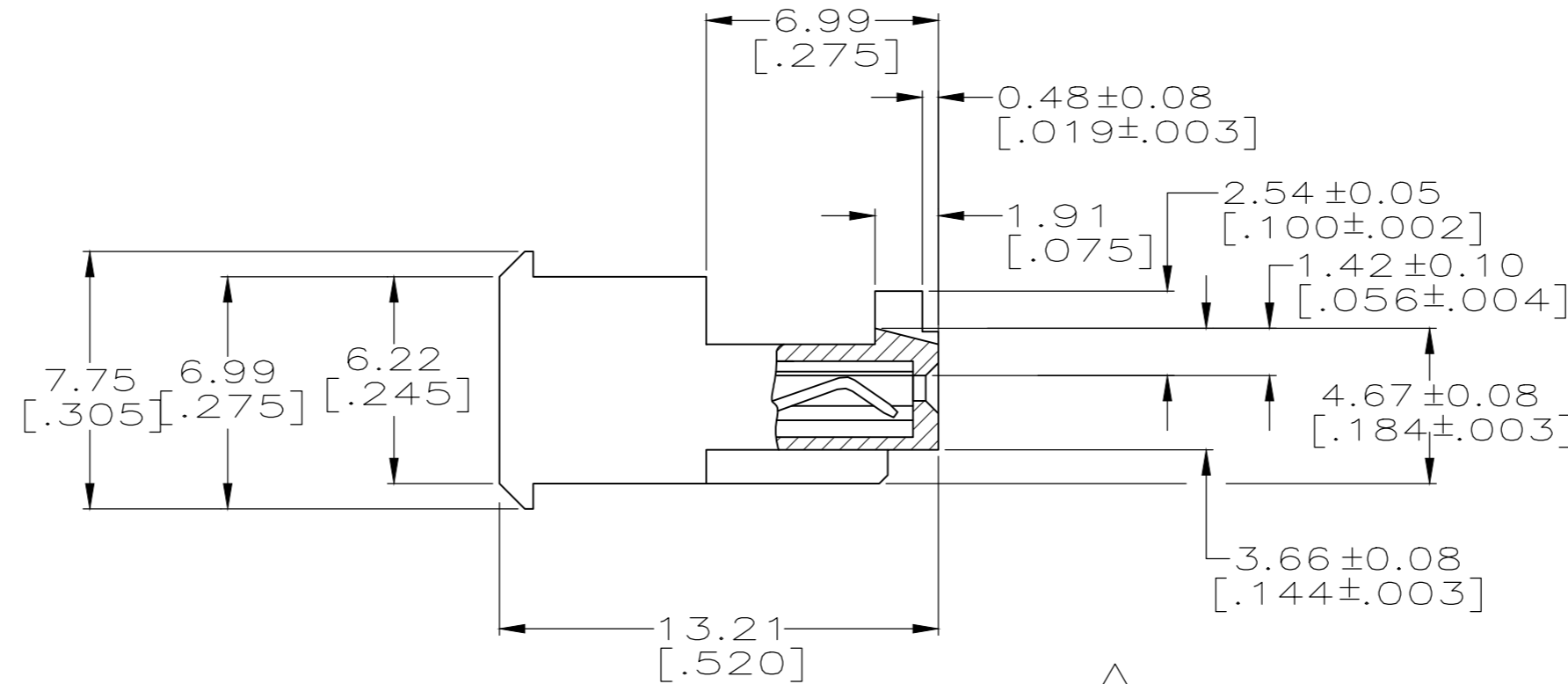
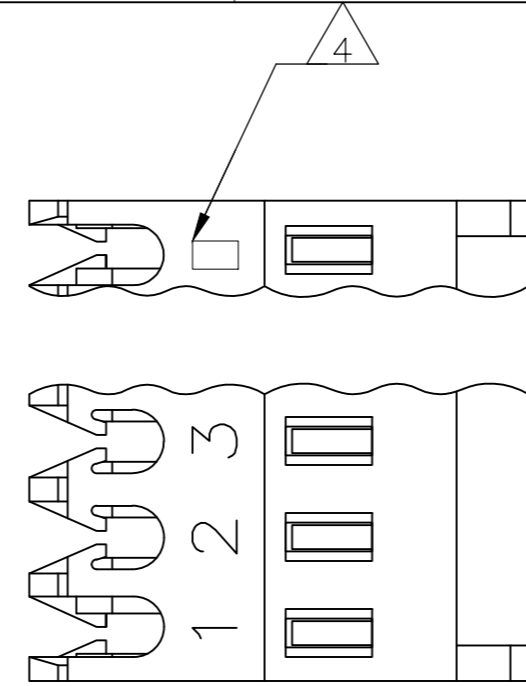


THIS DRAWING IS UNPUBLISHED. RELEASED FOR PUBLICATION  
 © COPYRIGHT - By - TE CONNECTIVITY ALL RIGHTS RESERVED.

LOC		DIST		REVISIONS			
P	LTR	DESCRIPTION		DATE	DWN	APVD	
D		REVISED PER ECR-20-000727		22MAY2020	PC	SW	



YES	38.10[1.500]	15	4-644565-5
YES	35.56[1.400]	14	4-644565-4
YES	33.02[1.300]	13	4-644565-3
YES	30.48[1.200]	12	4-644565-2
YES	27.94[1.100]	11	4-644565-1
YES	25.40[1.000]	10	4-644565-0
YES	22.86[.900]	9	3-644565-9
YES	20.32[.800]	8	3-644565-8
YES	17.78[.700]	7	3-644565-7
YES	15.24[.600]	6	3-644565-6
YES	12.70[.500]	5	3-644565-5
YES	10.16[.400]	4	3-644565-4
YES	7.62[.300]	3	3-644565-3
YES	5.08[.200]	2	3-644565-2

NO	38.10[1.500]	15	1-644565-5
NO	35.56[1.400]	14	1-644565-4
NO	33.02[1.300]	13	1-644565-3
NO	30.48[1.200]	12	1-644565-2
NO	27.94[1.100]	11	1-644565-1
NO	25.40[1.000]	10	1-644565-0
NO	22.86[.900]	9	-644565-9
NO	20.32[.800]	8	-644565-8
NO	17.78[.700]	7	-644565-7
NO	15.24[.600]	6	-644565-6
NO	12.70[.500]	5	-644565-5
NO	10.16[.400]	4	-644565-4
NO	7.62[.300]	3	-644565-3
NO	5.08[.200]	2	-644565-2

7 SUPERSEDED			
NO	38.10[1.500]	15	1-644565-5
NO	35.56[1.400]	14	1-644565-4
NO	33.02[1.300]	13	1-644565-3
NO	30.48[1.200]	12	1-644565-2
NO	27.94[1.100]	11	1-644565-1
NO	25.40[1.000]	10	1-644565-0
NO	22.86[.900]	9	-644565-9
NO	20.32[.800]	8	-644565-8
NO	17.78[.700]	7	-644565-7
NO	15.24[.600]	6	-644565-6
NO	12.70[.500]	5	-644565-5
NO	10.16[.400]	4	-644565-4
NO	7.62[.300]	3	-644565-3
NO	5.08[.200]	2	-644565-2
7 SUPERSEDED			
8 SUPERSEDED			
7 SUPERSEDED			
8 SUPERSEDED			
7 SUPERSEDED			
7 SUPERSEDED			

LEADFREE	DIM A	NO. OF CIRCUITS	PART NO.
NO	38.10[1.500]	15	1-644565-5
NO	35.56[1.400]	14	1-644565-4
NO	33.02[1.300]	13	1-644565-3
NO	30.48[1.200]	12	1-644565-2
NO	27.94[1.100]	11	1-644565-1
NO	25.40[1.000]	10	1-644565-0
NO	22.86[.900]	9	-644565-9
NO	20.32[.800]	8	-644565-8
NO	17.78[.700]	7	-644565-7
NO	15.24[.600]	6	-644565-6
NO	12.70[.500]	5	-644565-5
NO	10.16[.400]	4	-644565-4
NO	7.62[.300]	3	-644565-3
NO	5.08[.200]	2	-644565-2

- 1 MATERIAL: CONNECTOR - NYLON UL94V-2 (GREEN).  
CONTACTS - 0.30[.012] THICK COPPER ALLOY BRIGHT TIN-LEAD .00203[.000080] MIN THICKNESS FOR 644565-2 THRU 2-644565-8.  
MATTE WHISKER MITIGATED TIN .00203[.000080] MIN THICKNESS OVER NICKEL UNDERPLATE FOR 3-644565-2 THRU 4-644565-5.
- 2 CONTACTS ACCEPT 28 AWG WIRE WITH 1.52[.060] MAX INSULATION DIAMETER.
- 3 CONTACTS MUST ACCEPT 0.64±0.03[.025±.001] SQUARE POST AND REMAIN LOCKED IN POSITION.
- 4 IDENTIFICATION NUMBER FOR LAST CIRCUIT MAY NOT APPEAR ON ALL ASSEMBLIES.
- 5 DIMENSIONS IN BRACKETS ARE IN INCHES.
- 6 HOUSING FEATURES ARE: FEED THRU WITH LOCKING RAMP AND WITH POLARIZING TAB.
- 7 OBSOLETE PARTS: OBSOLETE CIS STREAMLINING PER D.RENAUD/D.SINISI
- 8 OBSOLETE PARTS

THIS DRAWING IS A CONTROLLED DOCUMENT.		DWN S. CARPENTER 08AUG2003	<b>TE</b> TE Connectivity	
DIMENSIONS: mm [INCHES]		CHK D. BOSSI 08AUG2003		
TOLERANCES UNLESS OTHERWISE SPECIFIED: 0 PLC ± 1 PLC ± 2 PLC ± 3 PLC ± 0.13 [.005] 4 PLC ± ANGLES ±		APVD D. BOSSI 08AUG2003	NAME MTA 100 CONNECTOR ASSEMBLY, 28 AWG, STANDARD	
MATERIAL 1		FINISH 1	PRODUCT SPEC 108-1050	SIZE A2
			APPLICATION SPEC 114-1019	CAGE CODE 00779
			WEIGHT	DRAWING NO C=644565
			CUSTOMER DRAWING	RESTRICTED TO -
			SCALE 5:1	SHEET 1 of 1
				REV D

A/C BUSINESS GROUP 3323 177-34 'NICK GANNON'

644565

## X-ON Electronics

Largest Supplier of Electrical and Electronic Components

*Click to view similar products for [Headers & Wire Housings](#) category:*

*Click to view products by [TE Connectivity](#) manufacturer:*

Other Similar products are found below :

[95000-104TRLF](#) [10135584-644402LF](#) [DF62W-EP2022PCA](#) [95000-106TRLF](#) [DF62W-2022SCA](#) [DF62W-EP2022PC](#) [2203348](#) [DF62W-2022SC](#) [1084018](#) [1029039](#) [1084017](#) [802-10-012-10-002000](#) [1112640](#) [1112639](#) [000-34000](#) [0009482033](#) [0009507031](#) [57102-S06-03LF](#) [57202-S52-04LF](#) [PCN6-15S-2.5E](#) [0039019024](#) [58102-G61-06LF](#) [582553-1](#) [0009508121](#) [0050291907](#) [018731A](#) [LY20-4P-DT1-P1E-BR](#) [02.125.8002.8](#) [60101931](#) [60598-1 \(Cut Strip\)](#) [M1625-3R/100](#) [61062-3](#) [61082-181009](#) [636-1427](#) [638009-1](#) [641938-9](#) [641991-4](#) [644168-1](#) [647662-1](#) [65039-019ELF](#) [65817-002LF](#) [65817-015LF](#) [65863-015LF](#) [66207-023LF](#) [67016-026LF](#) [67046-001LF](#) [67095-007LF](#) [68002-116](#) [68016-236H](#) [68648-049](#)