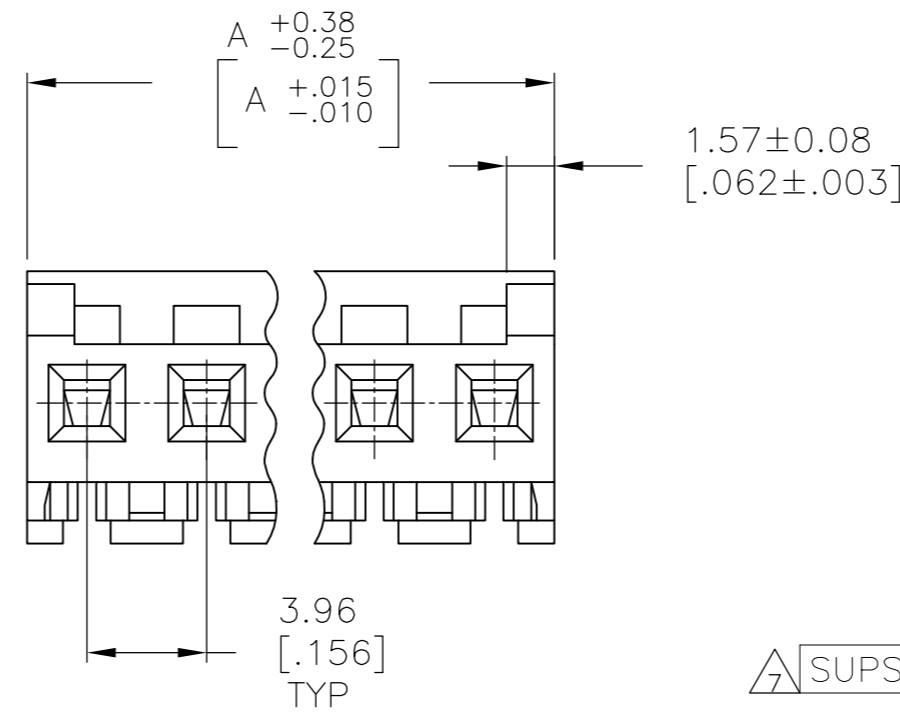
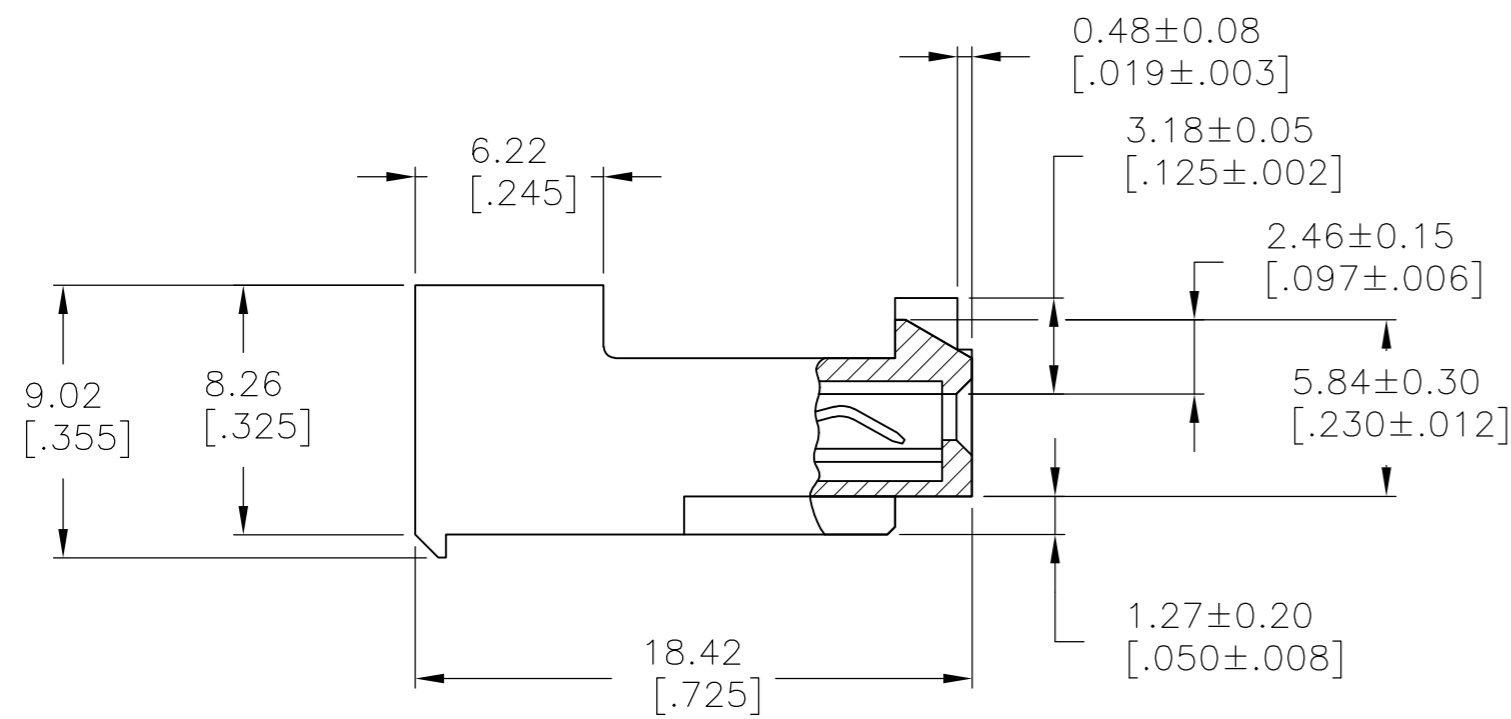
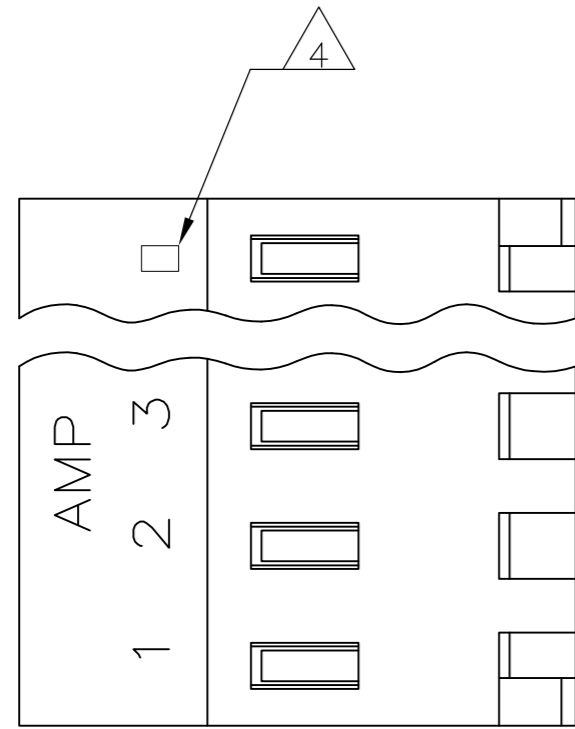


THIS DRAWING IS UNPUBLISHED. RELEASED FOR PUBLICATION
 © COPYRIGHT - By - TE CONNECTIVITY ALL RIGHTS RESERVED.

LOC		DIST		REVISIONS			
P	LTR	DESCRIPTION		DATE	DWN	APVD	
CM	00	F		REVISED PER ECR-20-000820	27MAY2020	PC SW	

- 1 MATERIAL: CONNECTOR - NYLON UL94V-2 (YELLOW).
 CONTACTS - 0.00076[.000030] GOLD THK OR 0.00008[.000003] MIN THK GOLD FLASH OVER 0.00068[.000027] THK PALLADIUM NICKEL, PER TE CONNECTIVITY'S DISCRETION, IN CONTACT AREA WITH MATTE TIN FOR 644663-2 THRU 1-644663-2, MATTE WHISKER MITIGATED TIN FOR 3-644663-2 THRU 4-644663-2 OVER NICKEL UNDERPLATE.
- 2 CONTACTS ACCEPT 20 AWG WIRE WITH 2.41[.095] MAX INSULATION DIAMETER.
- 3 CONTACTS MUST ACCEPT 1.14±0.03[.045±.001] POST AND REMAIN LOCKED IN POSITION.
- 4 IDENTIFICATION NUMBER FOR LAST CIRCUIT MAY NOT APPEAR ON ALL ASSEMBLIES.
- 5 DIMENSIONS IN BRACKETS ARE IN INCHES.
- 6 HOUSING FEATURES ARE: CLOSED END WITH LOCKING RAMP AND POLARIZING TAB.
- 7 OBSOLETE PARTS: OBSOLETE CIS STREAMLINING PER D.RENAUD/D.SINISI



47.55 [1.872]	12	4-644663-2
43.59 [1.716]	11	4-644663-1
39.62 [1.560]	10	4-644663-0
35.66 [1.404]	9	3-644663-9
31.70 [1.248]	8	3-644663-8
27.74 [1.092]	7	3-644663-7
23.77 [.936]	6	3-644663-6
19.81 [.780]	5	3-644663-5
15.85 [.624]	4	3-644663-4
11.89 [.468]	3	3-644663-3
7.92 [.312]	2	3-644663-2
7.92 [.312]	2	1-644663-2
43.59 [1.716]	11	1-644663-1
39.62 [1.560]	10	1-644663-0
35.66 [1.404]	9	644663-9
31.70 [1.248]	8	644663-8
27.74 [1.092]	7	644663-7
23.77 [.936]	6	644663-6
19.81 [.780]	5	644663-5
15.85 [.624]	4	644663-4
11.89 [.468]	3	644663-3
7.92 [.312]	2	644663-2
DIM A		NO OF CIRCUITS
		PART NO

THIS DRAWING IS A CONTROLLED DOCUMENT.		DWN D. SOLOMON 09 JAN 92		
DIMENSIONS: mm [INCHES]		CHK R. SWING 09 JAN 92		
TOLERANCES UNLESS OTHERWISE SPECIFIED:		APVD T. WERT 09 JAN 92	NAME	
0 PLC ± -	1 PLC ± -	PRODUCT SPEC	MTA 156 CONNECTOR ASSEMBLY, 20 AWG, STANDARD	
2 PLC ± -	3 PLC ± -	108-1051	SIZE	CAGE CODE
4 PLC ± -	ANGLES ± -	114-1020	A2	00779
MATERIAL	FINISH	WEIGHT	DRAWING NO	RESTRICTED TO
1	1	-	C=644663	-
CUSTOMER DRAWING			SCALE	SHEET
			4:1	1 OF 1
			REV	F

X-ON Electronics

Largest Supplier of Electrical and Electronic Components

Click to view similar products for [Headers & Wire Housings](#) category:

Click to view products by [TE Connectivity](#) manufacturer:

Other Similar products are found below :

[95000-104TRLF](#) [10135584-644402LF](#) [DF62W-EP2022PCA](#) [95000-106TRLF](#) [DF62W-2022SCA](#) [DF62W-EP2022PC](#) [2203348](#) [DF62W-2022SC](#) [1084018](#) [1029039](#) [1084017](#) [802-10-012-10-002000](#) [1112640](#) [1112639](#) [000-34000](#) [0009482033](#) [0009507031](#) [57102-S06-03LF](#) [57202-S52-04LF](#) [PCN6-15S-2.5E](#) [0039019024](#) [58102-G61-06LF](#) [582553-1](#) [0009508121](#) [0050291907](#) [018731A](#) [LY20-4P-DT1-P1E-BR](#) [02.125.8002.8](#) [60101931](#) [60598-1 \(Cut Strip\)](#) [M1625-3R/100](#) [61062-3](#) [61082-181009](#) [636-1427](#) [638009-1](#) [641938-9](#) [641991-4](#) [644168-1](#) [647662-1](#) [65039-019ELF](#) [65817-002LF](#) [65817-015LF](#) [65863-015LF](#) [66207-023LF](#) [67016-026LF](#) [67046-001LF](#) [67095-007LF](#) [68002-116](#) [68016-236H](#) [68648-049](#)