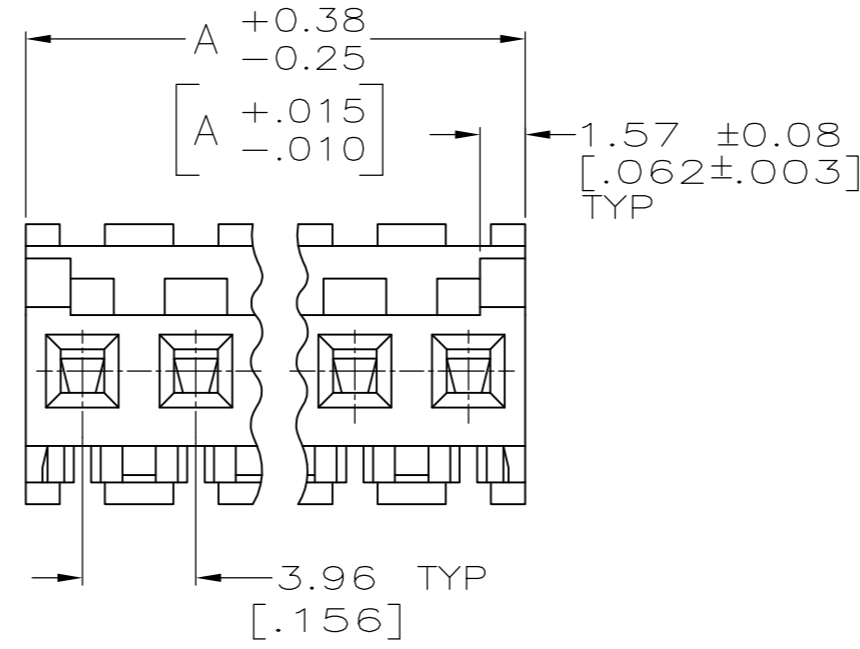
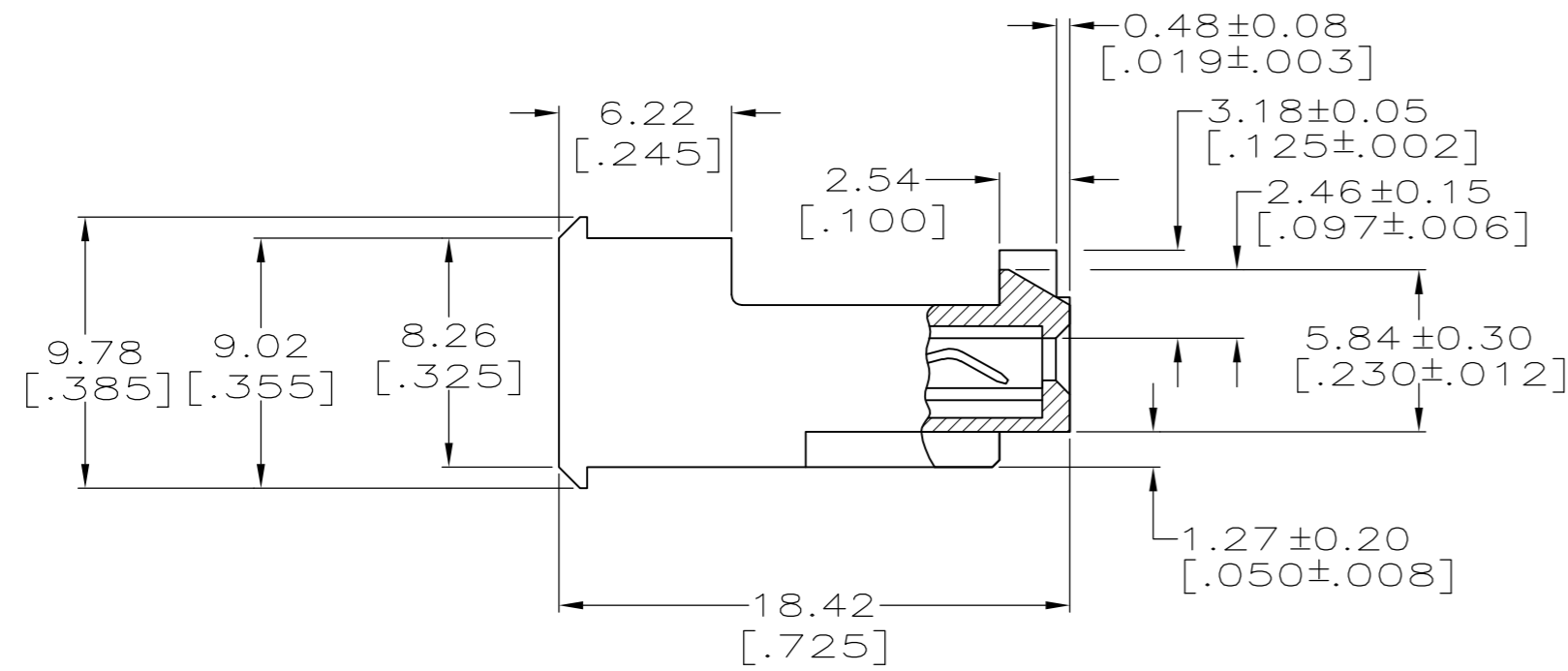
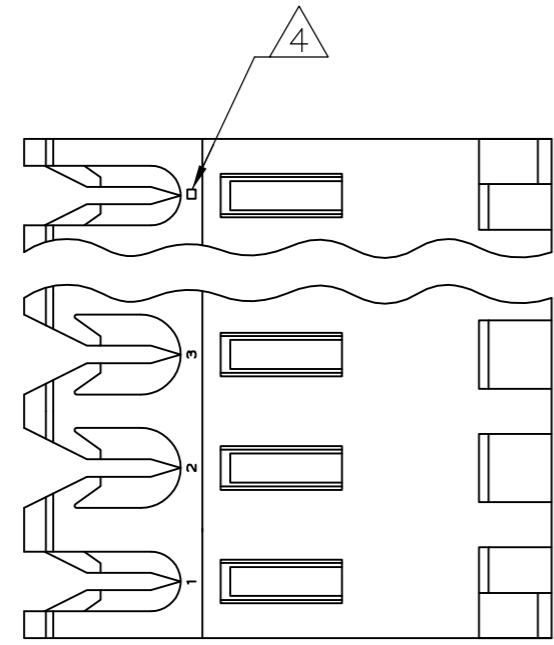


THIS DRAWING IS UNPUBLISHED. RELEASED FOR PUBLICATION  
 © COPYRIGHT - By - TE CONNECTIVITY ALL RIGHTS RESERVED.

LOC	DIST	REVISIONS			
P	LTR	DESCRIPTION	DATE	DWN	APVD
CM	00				
	L2	REVISED PER ECR-15-006687	21OCT2015	NK	NL



1 MATERIAL: CONNECTOR - NYLON UL94V-2 (ORANGE).  
 CONTACTS - 0.00076[.000030] GOLD THK OR 0.00008[.000003] MIN THK  
 GOLD FLASH OVER 0.00068[.000027] THK PALLADIUM NICKEL,  
 PER TE CONNECTIVITY'S DISCRETION. IN CONTACT AREA WITH MATTE TIN FOR  
 -2 THRU -28, MATTE WHISKER MITIGATED TIN FOR  
 3-644718-2 THRU 4-644718-4 OVER NICKEL UNDERPLATE.

- 2 CONTACTS ACCEPT 18 AWG WIRE WITH 2.41[.095] MAX INSULATION DIAMETER.
- 3 CONTACTS MUST ACCEPT 1.14±0.03[.045±.001] POST AND REMAIN LOCKED IN POSITION.
- 4 IDENTIFICATION NUMBER FOR LAST CIRCUIT MAY NOT APPEAR ON ALL ASSEMBLIES.
- 5 DIMENSIONS IN BRACKETS ARE IN INCHES.
- 6 HOUSING FEATURES ARE: FEED-THRU WITH LOCKING RAMP AND POLARIZING TAB.
- 7 OBSOLETE PARTS: OBSOLETE CIS STREAMLINING PER D.RENAUD/D.SINISI

YES	55.47[2.184]	14	4-644718-4
YES	51.51[2.028]	13	4-644718-3
YES	47.55[1.872]	12	4-644718-2
YES	43.59[1.716]	11	4-644718-1
YES	39.62[1.560]	10	4-644718-0
YES	35.66[1.404]	9	3-644718-9
YES	31.70[1.248]	8	3-644718-8
YES	27.74[1.092]	7	3-644718-7
YES	23.77[.936]	6	3-644718-6
YES	19.81[.780]	5	3-644718-5
YES	15.85[.624]	4	3-644718-4
YES	11.89[.468]	3	3-644718-3
YES	7.92[.312]	2	3-644718-2
NO	55.47[2.184]	14	1-644718-4
NO	51.51[2.028]	13	1-644718-3
NO	47.55[1.872]	12	1-644718-2
NO	43.59[1.716]	11	1-644718-1
NO	39.62[1.560]	10	1-644718-0
NO	35.66[1.404]	9	644718-9
NO	31.70[1.248]	8	644718-8
NO	27.74[1.092]	7	644718-7
NO	23.77[.936]	6	644718-6
NO	19.81[.780]	5	644718-5
NO	15.85[.624]	4	644718-4
NO	11.89[.468]	3	644718-3
NO	7.92[.312]	2	644718-2
OBSOLETE			
NO	55.47[2.184]	14	LEADFREE DIM A NO. OF CIRCUITS PART NO.
SUPERSEDED BY 4-644718-4			
SUPERSEDED BY 4-644718-3			
SUPERSEDED BY 4-644718-2			
SUPERSEDED BY 4-644718-1			
SUPERSEDED BY 4-644718-0			
SUPERSEDED BY 3-644718-9			
SUPERSEDED BY 3-644718-8			
SUPERSEDED BY 3-644718-7			
SUPERSEDED BY 3-644718-6			
SUPERSEDED BY 3-644718-5			
SUPERSEDED BY 3-644718-4			
SUPERSEDED BY 3-644718-3			
SUPERSEDED BY 3-644718-2			

THIS DRAWING IS A CONTROLLED DOCUMENT.		DWN K. WHITAKER 15MAR2004		
DIMENSIONS: mm [INCHES]		CHK D. BOSSI 15-MAR-04		
TOLERANCES UNLESS OTHERWISE SPECIFIED:		APVD D. BOSSI 15-MAR-04	NAME	
0 PLC ± -		PRODUCT SPEC	MTA 156 CONNECTOR ASSEMBLY, 18 AWG, STANDARD	
1 PLC ± -		APPLICATION SPEC	SIZE	CAGE CODE
2 PLC ± 0.13 [.005]		108-1051	A2	00779
3 PLC ± -		114-1020	DRAWING NO	RESTRICTED TO
4 PLC ± -		WEIGHT	C=644718	-
ANGLES ± 0°30'		CUSTOMER DRAWING	SCALE	SHEET
FINISH			4:1	1 OF 1
			REV	L2

## X-ON Electronics

Largest Supplier of Electrical and Electronic Components

*Click to view similar products for [Headers & Wire Housings](#) category:*

*Click to view products by [TE Connectivity](#) manufacturer:*

Other Similar products are found below :

[892-18-020-10-001101](#) [58102-G61-06LF](#) [582553-1](#) [0009485154](#) [009176003701906](#) [0050291907](#) [LY20-4P-DT1-P1E-BR](#) [02.125.8002.8](#)  
[609-3404](#) [61062-3](#) [61082-181009](#) [622-3653LF](#) [63453-116](#) [636-1030](#) [636-1427](#) [636-3427](#) [636-4007](#) [641938-9](#) [641991-4](#) [644827-2](#) [65817-010LF](#) [65817-015LF](#) [65863-015LF](#) [66207-023LF](#) [67095-007LF](#) [67601157](#) [68645-018](#) [68648-049](#) [70.362.1628.0](#) [70-4210](#) [70-4226B](#) [70-4853B](#) [707-5020](#) [707-5028](#) [71.350.2428.0](#) [71918-208LF](#) [71961-016LF](#) [733-134](#) [733-162](#) [754199-000](#) [760-3052](#) [787-8014-00](#) [79531-3000](#)  
[FCN-360C032-B](#) [FCN-367T-T012/H](#) [FCN-723D010/2](#) [80.063.4001.1](#) [800-90-001-10-001000](#) [800-90-010-10-002000](#) [801-43-002-10-013000](#)