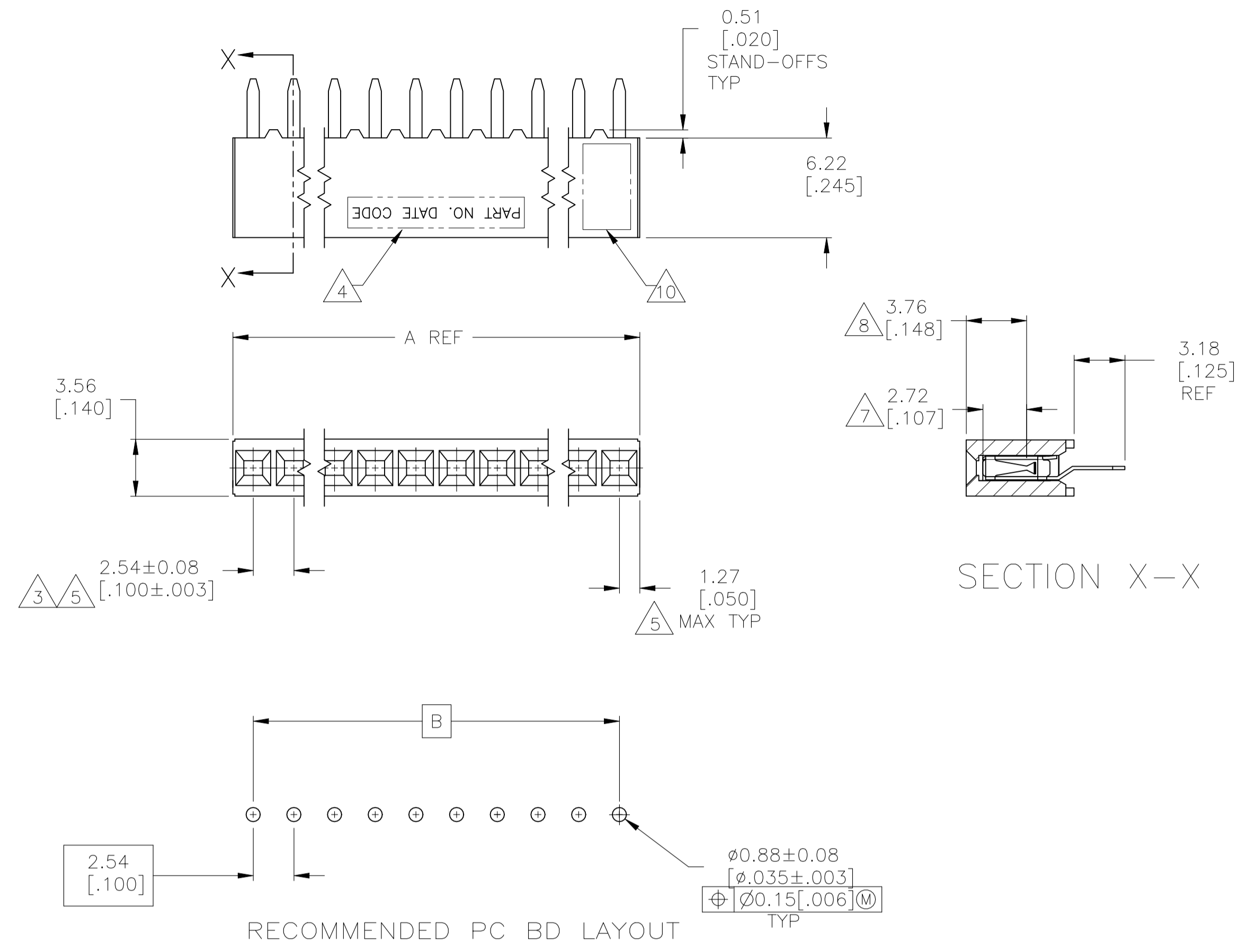


REVISIONS					
P	LTR	DESCRIPTION	DATE	DRN	APVD
P		HOUSING RESIN CHANGED	27OCT2021	SCB	KJK



- 1 HOUSING: FLAME RETARDANT, GLASS FILLED, POLYESTER, COLOR: BLACK. CONTACT: PHOSPHOR BRONZE
- 2 CONTACT: DUPLEX PLATED 0.76µm[.000030] MIN GOLD IN CONTACT AREA, 3.81-7.62µm[.000150-.000300] BRIGHT TIN-LEAD ON LEADS ALL OVER 1.27µm[.000050] MIN NICKEL
- 3 THESE DIMENSIONS PERTAIN TO CAVITY CENTERLINES ONLY - NOT TO CONTACT LOCATIONS
- 4 PART NUMBER AND DATE CODE ARE MARKED IN APPROXIMATE LOCATION SHOWN, EITHER SIDE.
- 5 TOLERANCE IS NON-CUMULATIVE.
- 6 2 POSITION DATE CODE IS MARKED OPPOSITE SIDE OF TE CONNECTIVITY LOGO.
- 7 POINT-OF-MEASUREMENT DIMENSION FOR PLATING THICKNESS (INSIDE CONTACT BEAM).
- 8 POINT-OF-CONTACT DIMENSION.
- 9 NO PART NUMBER MARKING REQUIRED FOR THIS PART.
- 10 TE LOGO AND CSA LOGO ARE MOLDED INTO HOUSING.
- 11 CONTACT: DUPLEX PLATED 0.76µm[.000030] MIN GOLD IN CONTACT AREA, 3.81-7.62µm[.000150-.000300] MATTE TIN ON LEADS ALL OVER 1.27µm[.000050] MIN NICKEL
- 12 ROHS 2002/95/EC COMPLIANT.

FINISH	B	A	NO OF POSN	PART NUMBER
	2.54 [.100]	5.08 [.200]	2	8-535541-9
	99.06 [3.900]	101.60 [4.000]	40	8-535541-8
	96.52 [3.800]	99.06 [3.900]	39	8-535541-7
	93.98 [3.700]	96.52 [3.800]	38	8-535541-6
	91.44 [3.600]	93.98 [3.700]	37	8-535541-5
	88.90 [3.500]	91.44 [3.600]	36	8-535541-4
	86.36 [3.400]	88.90 [3.500]	35	8-535541-3
	83.82 [3.300]	86.36 [3.400]	34	8-535541-2
	81.28 [3.200]	83.82 [3.300]	33	8-535541-1
	78.74 [3.100]	81.28 [3.200]	32	8-535541-0
	76.20 [3.000]	78.74 [3.100]	31	7-535541-9
	73.66 [2.900]	76.20 [3.000]	30	7-535541-8
	71.12 [2.800]	73.66 [2.900]	29	7-535541-7
	68.58 [2.700]	71.12 [2.800]	28	7-535541-6
	66.04 [2.600]	68.58 [2.700]	27	7-535541-5
	63.50 [2.500]	66.04 [2.600]	26	7-535541-4
	60.96 [2.400]	63.50 [2.500]	25	7-535541-3
	58.42 [2.300]	60.96 [2.400]	24	7-535541-2
	55.88 [2.200]	58.42 [2.300]	23	7-535541-1
	53.34 [2.100]	55.88 [2.200]	22	7-535541-0
	50.80 [2.000]	53.34 [2.100]	21	6-535541-9
	48.26 [1.900]	50.80 [2.000]	20	6-535541-8
	45.72 [1.800]	48.26 [1.900]	19	6-535541-7
	43.18 [1.700]	45.72 [1.800]	18	6-535541-6
	40.64 [1.600]	43.18 [1.700]	17	6-535541-5
	38.10 [1.500]	40.64 [1.600]	16	6-535541-4
	35.56 [1.400]	38.10 [1.500]	15	6-535541-3
	33.02 [1.300]	35.56 [1.400]	14	6-535541-2
	30.48 [1.200]	33.02 [1.300]	13	6-535541-1
	27.94 [1.100]	30.48 [1.200]	12	6-535541-0
	25.40 [1.000]	27.94 [1.100]	11	5-535541-9
	22.86 [.900]	25.40 [1.000]	10	5-535541-8
	20.32 [.800]	22.86 [.900]	9	5-535541-7
	17.78 [.700]	20.32 [.800]	8	5-535541-6
	15.24 [.600]	17.78 [.700]	7	5-535541-5
	12.70 [.500]	15.24 [.600]	6	5-535541-4
	10.16 [.400]	12.70 [.500]	5	5-535541-3
	7.62 [.300]	10.16 [.400]	4	5-535541-2
	5.08 [.200]	7.62 [.300]	3	5-535541-1

	2.54 [.100]	5.08 [.200]	2	3-535541-9
	99.06 [3.900]	101.60 [4.000]	40	3-535541-8
	96.52 [3.800]	99.06 [3.900]	39	3-535541-7
	93.98 [3.700]	96.52 [3.800]	38	3-535541-6
	91.44 [3.600]	93.98 [3.700]	37	3-535541-5
	88.90 [3.500]	91.44 [3.600]	36	3-535541-4
	86.36 [3.400]	88.90 [3.500]	35	3-535541-3
	83.82 [3.300]	86.36 [3.400]	34	3-535541-2
	81.28 [3.200]	83.82 [3.300]	33	3-535541-1
	78.74 [3.100]	81.28 [3.200]	32	3-535541-0
	76.20 [3.000]	78.74 [3.100]	31	2-535541-9
	73.66 [2.900]	76.20 [3.000]	30	2-535541-8
	71.12 [2.800]	73.66 [2.900]	29	2-535541-7
	68.58 [2.700]	71.12 [2.800]	28	2-535541-6
	66.04 [2.600]	68.58 [2.700]	27	2-535541-5
	63.50 [2.500]	66.04 [2.600]	26	2-535541-4
	60.96 [2.400]	63.50 [2.500]	25	2-535541-3
	58.42 [2.300]	60.96 [2.400]	24	2-535541-2
	55.88 [2.200]	58.42 [2.300]	23	2-535541-1
	53.34 [2.100]	55.88 [2.200]	22	2-535541-0
	50.80 [2.000]	53.34 [2.100]	21	1-535541-9
	48.26 [1.900]	50.80 [2.000]	20	1-535541-8
	45.72 [1.800]	48.26 [1.900]	19	1-535541-7
	43.18 [1.700]	45.72 [1.800]	18	1-535541-6
	40.64 [1.600]	43.18 [1.700]	17	1-535541-5
	38.10 [1.500]	40.64 [1.600]	16	1-535541-4
	35.56 [1.400]	38.10 [1.500]	15	1-535541-3
	33.02 [1.300]	35.56 [1.400]	14	1-535541-2
	30.48 [1.200]	33.02 [1.300]	13	1-535541-1
	27.94 [1.100]	30.48 [1.200]	12	1-535541-0
	25.40 [1.000]	27.94 [1.100]	11	535541-9
	22.86 [.900]	25.40 [1.000]	10	535541-8
	20.32 [.800]	22.86 [.900]	9	535541-7
	17.78 [.700]	20.32 [.800]	8	535541-6
	15.24 [.600]	17.78 [.700]	7	535541-5
	12.70 [.500]	15.24 [.600]	6	535541-4
	10.16 [.400]	12.70 [.500]	5	535541-3
	7.62 [.300]	10.16 [.400]	4	535541-2
	5.08 [.200]	7.62 [.300]	3	535541-1

THIS DRAWING IS A CONTROLLED DOCUMENT.

DIMENSIONS: mm [INCHES]

TOLERANCES UNLESS OTHERWISE SPECIFIED:

0. PLC	± .0005
1. PLC	± .001
2. PLC	± 0.25(.010)
3. PLC	± 0.13(.005)
4. PLC	± .001
ANGLES	± .001

MATERIAL: FINISH

FINISH: B A

NO OF POSN: 2 40 39 38 37 36 35 34 33 32 31 30 29 28 27 26 25 24 23 22 21 20 19 18 17 16 15 14 13 12 11 10 9 8 7 6 5 4 3

PART NUMBER: 8-535541-9 8-535541-8 8-535541-7 8-535541-6 8-535541-5 8-535541-4 8-535541-3 8-535541-2 8-535541-1 8-535541-0 7-535541-9 7-535541-8 7-535541-7 7-535541-6 7-535541-5 7-535541-4 7-535541-3 7-535541-2 7-535541-1 7-535541-0 6-535541-9 6-535541-8 6-535541-7 6-535541-6 6-535541-5 6-535541-4 6-535541-3 6-535541-2 6-535541-1 6-535541-0 5-535541-9 5-535541-8 5-535541-7 5-535541-6 5-535541-5 5-535541-4 5-535541-3 5-535541-2 5-535541-1

TE Connectivity

RECPT ASSY, MOD IV, SINGLE ROW, .100CL, VERTICAL BOARD MOUNT, CLOSED, TOP ENTRY, SHORT PNT. OF CONTACT

108-25022

114-25018

00779 535541

CUSTOMER DRAWING

SCALE: 4:1

SHEET 1 of 1

REV P

X-ON Electronics

Largest Supplier of Electrical and Electronic Components

Click to view similar products for [Headers & Wire Housings](#) category:

Click to view products by [TE Connectivity](#) manufacturer:

Other Similar products are found below :

[892-18-020-10-001101](#) [58102-G61-06LF](#) [582553-1](#) [0009485154](#) [009176003701906](#) [0050291907](#) [LY20-4P-DT1-P1E-BR](#) [02.125.8002.8](#)
[609-3404](#) [61062-3](#) [61082-181009](#) [622-3653LF](#) [63453-116](#) [636-1030](#) [636-1427](#) [636-3427](#) [636-4007](#) [641938-9](#) [641991-4](#) [644827-2](#) [65817-](#)
[010LF](#) [65817-015LF](#) [65863-015LF](#) [66207-023LF](#) [67095-007LF](#) [67601157](#) [68645-018](#) [68648-049](#) [70.362.1628.0](#) [70-4210](#) [70-4226B](#) [70-](#)
[4853B](#) [707-5020](#) [707-5028](#) [71.350.2428.0](#) [71918-208LF](#) [71961-016LF](#) [733-134](#) [733-162](#) [754199-000](#) [760-3052](#) [787-8014-00](#) [79531-3000](#)
[FCN-360C032-B](#) [FCN-367T-T012/H](#) [FCN-723D010/2](#) [80.063.4001.1](#) [800-90-001-10-001000](#) [800-90-010-10-002000](#) [801-43-002-10-013000](#)