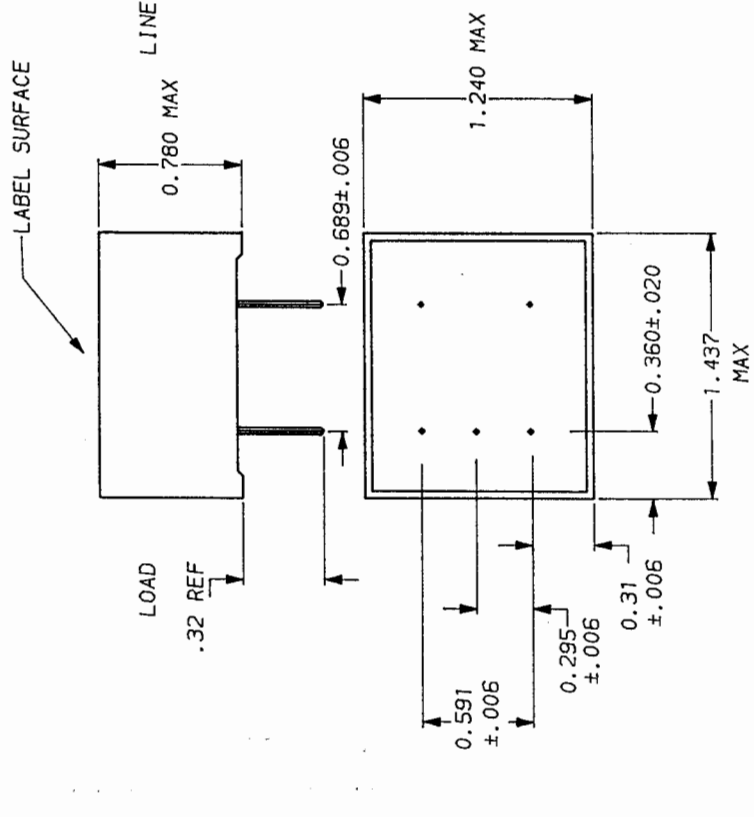


TAM 11/20/97
 APPROVED BY/DATE
 REV

SAFETY ORGANIZATION(S):

THIS FILTER HAS BEEN FORMALLY RECOGNIZED, CERTIFIED OR APPROVED BY THE LISTED AGENCY. THEREFORE, ALL TEST/REQUIREMENTS SPECIFIED IN THE LATEST REVISION OF THE FOLLOWING AGENCY STANDARDS HAVE BEEN MET.

- UL RECOGNIZED
- IN PROCESS
- CSA CERTIFIED
- IN PROCESS
- VDE APPROVED
- IN PROCESS



OPERATING SPECIFICATIONS:

- LINE VOLTAGE/CURRENT, 1 AMP., 120/250 VAC
- 50-60Hz
- MAX. LEAKAGE CURRENT, EACH LINE TO GROUND .25mA. at 120V 60 Hz
- .42mA at 250V 50 Hz
- OPERATING AMBIENT TEMP. RANGE, -10°C TO +40°C @ RATED CURRENT, I_r
- IN AN AMBIENT, T_a, HIGHER THAN 40°C, THE MAXIMUM OPERATING CURRENT, I_o, IS AS FOLLOWS:

$$I_o = I_r \sqrt{\frac{95 - T_a}{45}}$$

RELIABILITY SPECIFICATIONS:

- STORAGE TEMPERATURE, -25°C TO +85°C
- HUMIDITY, 21 DAYS @ 40°C 95% RH
- CURRENT OVERLOAD TEST, 6 TIMES RATED CURRENT FOR 8 SECONDS

TEST SPECIFICATIONS:

- INDUCTANCE, 10.0 mH NOMINAL
- CAPACITANCE, (MEASURED @ 1 KHz, 0.25 VAC MAX., 25°C ±1°C) .003µF ±20%
- LINE TO GROUND, .02µF ±20%
- LINE TO LINE, 1.5mH
- DISCHARGE RESISTOR, 6000 Ohm (MIN) AT 100 VDC
- LINE/GROUND AND LINE/LINE INSULATION RESISTANCE 20°C AND 50% RH
- (W/O DISCHARGE RESISTOR)

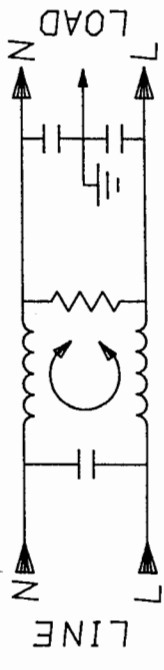
RECOMMENDED RECEIVING INSPECTION HIPOT:

- LINES TO GROUND, 1500 Vdc FOR 1 MINUTE
- LINE TO LINE, 1450 Vdc FOR 1 MINUTE

FILTER APPROVAL:
 THE BEST WAY TO SELECT AND QUALIFY A FILTER IS FOR YOUR ENGINEERING TO TEST THE UNIT IN YOUR EQUIPMENT.

50Ω - 50Ω MINIMUM INSERTION LOSS

FREQUENCY MHz	.01	.15	.50	1	3	4	5	8	10	20	30
COMMON	20	34	44	47	49	43	43	50	40	20	10
DIFF. dB	1	6	14	19	52	48	48	50	50	38	35



TOLERANCE EXCEPT AS NOTED
 DECIMAL, .XXX .XX .X ANGLES ± 1°
 ENGLISH, ±.025
 METRIC, ±

MATERIAL: AS SUPPLIED

FINISH:

This document is proprietary to CORCOM INC. and is not to be reproduced nor used for manufacturing purposes except on CORCOM's order or prior written consent.



LIBERTYVILLE, IL 60048

POWER LINE FILTER

SCALE	DATE	DRG. NO.	REV.
NTS	10/21/92		1EOP.00
DRW. BY	ORIGINATOR		
TAM	TAM		

X-ON Electronics

Largest Supplier of Electrical and Electronic Components

Click to view similar products for [Power Line Filters](#) category:

Click to view products by [TE Connectivity](#) manufacturer:

Other Similar products are found below :

[6609019-3](#) [6609026-5](#) [6609030-6](#) [6609973-2](#) [D30A](#) [7-1609090-5](#) [F2810](#) [F4456A](#) [F7382Z](#) [F7863Z](#) [FAHAV3100ZC000](#) [806276](#) [FN2020B-1-06](#) [FN2080B-10-06](#) [FN2410H-32-33](#) [FN2410H-80-34](#) [FP144](#) [FS4153-20-06](#) [FS4353-500-99](#) [12-MMB-030-11-D](#) [DB4-393](#) [15811T200](#) [20B1](#) [LC630](#) [2B1](#) [1609080-2](#) [1609993-8](#) [1-6609070-1](#) [F1100AA02](#) [F1150CC10](#) [F1500CA10](#) [F1500CA15](#) [F4041Z](#) [F7585E](#) [1B1](#) [FN2070A-16-06](#) [FN2090A-20-06](#) [FN2090B-12-06](#) [FN2090Z-1-06](#) [FN2410H-25-33](#) [FN2410H-60-34](#) [FN2410H-8-44](#) [FN2412H-8-44](#) [FN323B-6-01](#) [FN3258H-130-35](#) [FN610R-3-06](#) [20EHQ7](#) [20EHZ7](#) [20K1](#) [30B6](#)