

**PC Board Mountable RFI Filters for General Purpose Applications**

# EDP, EOP Series



**UL Recognized**  
**CSA Certified**  
**VDE Approved**

## EDP Series

The EDP series RFI filters provide enhanced differential mode performance for applications requiring more line-to-line protection. The EDP filters feature low leakage current for European safety requirements.

PC board mounted and only slightly taller than the EOP series filters, the EDP filters are available up to 10 amps.

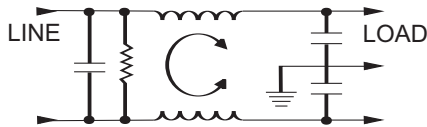
## EOP Series

The EOP series RFI power line filters are general purpose filters which are effective in removing both common and differential mode noise for susceptibility applications. These filters have low leakage current for European safety requirements.

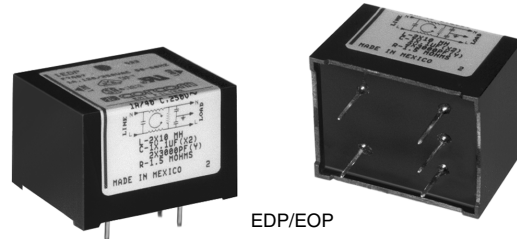
The compact design allows PC board mounting with minimal space requirements. Available from 1 to 10 amps, the filters provide a cost effective alternative to on board components.

## Electrical Schematic

### EDP/EOP Models



Resistor location for reference only.



## Specifications

### Maximum leakage current, each line-to-ground

@ 120 VAC 60 Hz:	.22 mA
@ 250 VAC 50 Hz:	.38 mA

### Hipot rating (one minute):

line-to-ground	1500 VAC
line-to-line	1450 VDC

### Operating frequency:

50/60 Hz

### Rated voltage (max.):

250 VAC

### Rated current:

1EDP/1EOP	1A
3EDP/3EOP	3A
6EDP/6EOP	6A
10EDP/10EOP	10A

### Minimum insertion loss in dB:

Line-to-ground in 50 ohm circuit

Current Rating	Frequency-MHz					
	.15	.5	1	5	10	30
<b>EDP Models</b>						
1A	32	41	54	54	46	40
3A	18	28	35	41	40	40
6A	10	20	28	37	40	40
10A	5	14	19	27	33	40
<b>EOP Models</b>						
1A	32	41	54	54	46	40
3A	18	28	35	41	40	40
6A	10	20	28	37	40	40
10A	5	14	19	27	33	40

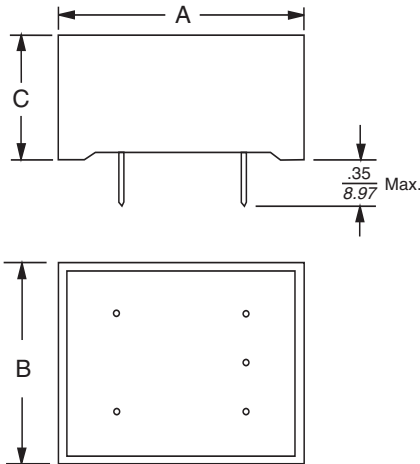
Line-to-line in 50 ohm circuit

Current Rating	Frequency-MHz							
	.15	.5	1	2	4	10	20	30
<b>EDP Models</b>								
1A	4	14	42	42	44	38		
3A	4	14	24	38	38	38		
6A	4	14	22	30	34	34		
10A	6	16	22	40	50	45		
<b>EOP Models</b>								
1A	1	6	19	39	48	52	38	35
3A	1	4	9	9	28	41	36	35
6A	1	4	9	9	40	40	42	35
10A	1	4	9	9	14	35	42	35

# EDP, EOP Series

## Case Style

EDP/EOP



Pins .025 square

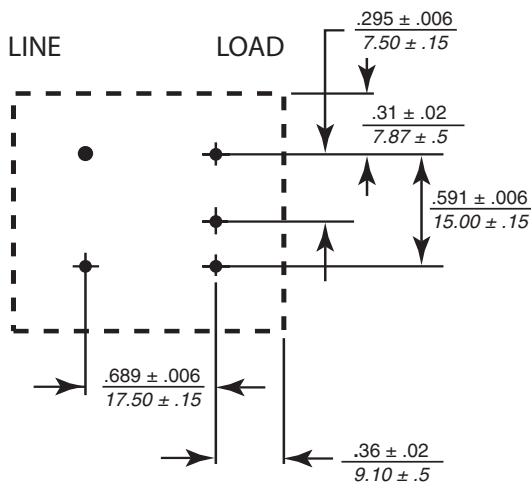
## Case Dimensions

Part No.	A (max)	B (max)	C (max)
EDP	1.44 <i>36.6</i>	1.24 <i>31.5</i>	0.95 <i>24.15</i>
EOP	1.44 <i>36.6</i>	1.24 <i>31.5</i>	0.78 <i>19.9</i>

## Part Numbers

1EDP	1EOP
3EDP	3EOP
6EDP	6EOP
10EDP	10EOP

## Mounting Holes Pattern & Clearance



## X-ON Electronics

Largest Supplier of Electrical and Electronic Components

*Click to view similar products for [EMI Filter Circuits](#) category:*

*Click to view products by [TE Connectivity](#) manufacturer:*

Other Similar products are found below :

[EMI2180MTTBG](#) [EMI8041BMUTAG](#) [CM1442-08CP](#) [CSPEMI204FCTAG](#) [SBSPP1000152MXT](#) [SBSGC5000473MXT](#)  
[SBSMC0500474MXT](#) [EMI8043MUTAG](#) [1-6609037-5](#) [BNX022-01L](#) [BNX024H01L](#) [NZF220DFT1G](#) [MEM2012SC151T001](#)  
[MEA2010PE150T001](#) [MEA1608PE220TA0G](#) [MEA1608LC150T001](#) [742730023](#) [MEM2012F101R](#) [NFA21SL287V1A45L](#)  
[MEM1608P101RT001](#) [SBSMP1000224MXT](#) [SBSMC5000683MXT](#) [SBSMC0500474MXB](#) [SBSGP1000104MXB](#) [SBSGP1000104MXT](#)  
[SBSGC5000102MXB](#) [MEM2012V301R](#) [MEM1608P75R0T001](#) [NFA18SD187X1A45L](#) [VEMI355A-HAF-G-08](#) [4420P-601-250/181](#)  
[EMI220T-RC](#) [EMI221T-RC](#) [EMI271T-RC](#) [EMI470T-RC](#) [EMI101T-RC](#) [EMI222T-RC](#) [SBSMP0500474MXB](#) [SBSGC0500224MXT](#)  
[BNP002-02](#) [BNP002-03](#) [BNX002-11](#) [BNX003-11](#) [BNX005-11](#) [BNX012-01](#) [NFA18SL407V1A45L](#) [NFA21SL317V1A45L](#)  
[NFW31SP206X1E4L](#) [NFW31SP506X1E4L](#) [IP4254CZ16-8-TTL,1](#)