

SAFETY ORGANIZATION(S).

THIS FILTER HAS BEEN FORMALLY RECOGNIZED, CERTIFIED OR APPROVED BY THE LISTED AGENCY. THEREFORE, ALL TEST/REQUIREMENTS SPECIFIED IN THE LATEST REVISION OF THE FOLLOWING AGENCY STANDARDS HAVE BEEN MET.

UL 1283
 CSA 22.2 NO. 0, 0.4, 8
 TUV LICENSED AT 19.5 AMPS
 VDE 0565-3 (20AYT6C ONLY)

OPERATING SPECIFICATIONS.

LINE VOLTAGE/CURRENT, 20 OR 30 AMP., 250VAC PHASE/NEUTRAL-GND
 20 OR 30 AMP., 440VAC PHASE/PHASE
 LINE FREQUENCY, 50-60HZ
 MAX. CASE RISE θ RATED CURRENT, 40°C
 MAX. LEAKAGE CURRENT, EACH 1.4mA @ 120V 60HZ
 3.4mA @ 250V 50HZ
 OPERATING AMBIENT TEMP. RANGE, -10°C TO +40°C @ RATED CURRENT, I_r

IN AN AMBIENT, T_a, HIGHER THAN 40°C, THE MAXIMUM OPERATING CURRENT, I_o, IS AS FOLLOWS:

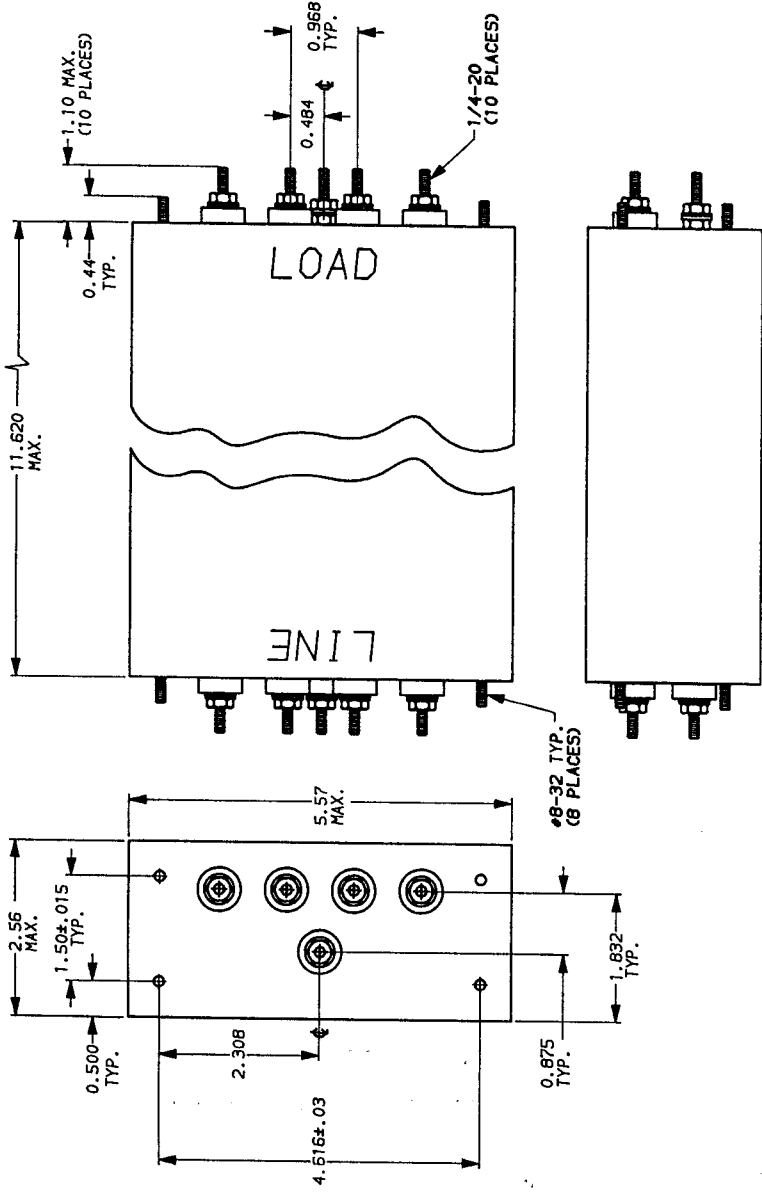
$$I_o = I_r \sqrt{\frac{85 - T_a}{45}}$$

RELIABILITY SPECIFICATIONS.

STORAGE TEMPERATURE, -25°C TO +85°C
 HUMIDITY, 21 DAYS @ 40°C 95% RH

TEST SPECIFICATIONS.

INDUCTANCE, 20A = 7.0mH NOMINAL 30A = 3.32mH NOMINAL
 GROUND CHOKE, .261mH NOMINAL
 CAPACITANCE, (MEASURED @ 1 KHz, 0.25 VAC MAX., 25°C ±1°C)
 PHASE/NEUTRAL TO GROUND, .025μF ±20%
 PHASE TO NEUTRAL, 4.47μF ±20%
 DISCHARGE RESISTOR, 73.3K OHMS
 LINE/GROUND AND LINE/LINE INSULATION RESISTANCE 5000 MΩ (MIN) AT 100 VDC
 (W/O DISCHARGE RESISTOR) 20°C AND 50% RH
 RECOMMENDED RECEIVING INSPECTION HIPOIT, 1500 VAC FOR 1 MINUTE
 PHASE/NEUTRAL TO GROUND, 1450 VDC FOR 1 MINUTE
 PHASE TO NEUTRAL,

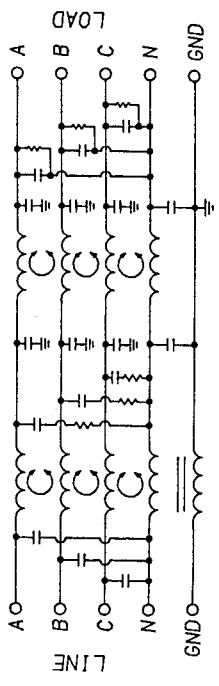


NOTES:
 1.) UNLESS OTHERWISE SPECIFIED, TOLERANCE TO BE ±.030
 2.) LINE SIDE HAS INSULATED GROUND TERMINAL.

NOTE: COMMON MODE A-B-C & N SHORTED TOGETHER.
 DIFF. MODE MEASURED N TO A-B-C SHORTED TOGETHER.

50Ω - 50Ω (MINIMUM) INSERTION LOSS		TOLERANCE EXCEPT AS NOTED	
FREQUENCY MHZ	DECIMAL	.XXX	.XX
20A	.05	.15	.5
30A	.05	.15	.5
45	.05	.15	.5
60	.05	.15	.5
75	.05	.15	.5
90	.05	.15	.5
105	.05	.15	.5
120	.05	.15	.5
135	.05	.15	.5
150	.05	.15	.5
165	.05	.15	.5
180	.05	.15	.5
200	.05	.15	.5
225	.05	.15	.5
250	.05	.15	.5
275	.05	.15	.5
300	.05	.15	.5
315	.05	.15	.5
330	.05	.15	.5
345	.05	.15	.5
360	.05	.15	.5
375	.05	.15	.5
390	.05	.15	.5
405	.05	.15	.5
420	.05	.15	.5
435	.05	.15	.5
450	.05	.15	.5
465	.05	.15	.5
480	.05	.15	.5
495	.05	.15	.5
510	.05	.15	.5
525	.05	.15	.5
540	.05	.15	.5
555	.05	.15	.5
570	.05	.15	.5
585	.05	.15	.5
600	.05	.15	.5
615	.05	.15	.5
630	.05	.15	.5
645	.05	.15	.5
660	.05	.15	.5
675	.05	.15	.5
690	.05	.15	.5
705	.05	.15	.5
720	.05	.15	.5
735	.05	.15	.5
750	.05	.15	.5
765	.05	.15	.5
780	.05	.15	.5
795	.05	.15	.5
810	.05	.15	.5
825	.05	.15	.5
840	.05	.15	.5
855	.05	.15	.5
870	.05	.15	.5
885	.05	.15	.5
900	.05	.15	.5
915	.05	.15	.5
930	.05	.15	.5
945	.05	.15	.5
960	.05	.15	.5
975	.05	.15	.5
990	.05	.15	.5
1005	.05	.15	.5
1020	.05	.15	.5
1035	.05	.15	.5
1050	.05	.15	.5
1065	.05	.15	.5
1080	.05	.15	.5
1095	.05	.15	.5
1110	.05	.15	.5
1125	.05	.15	.5
1140	.05	.15	.5
1155	.05	.15	.5
1170	.05	.15	.5
1185	.05	.15	.5
1200	.05	.15	.5
1215	.05	.15	.5
1230	.05	.15	.5
1245	.05	.15	.5
1260	.05	.15	.5
1275	.05	.15	.5
1290	.05	.15	.5
1305	.05	.15	.5
1320	.05	.15	.5
1335	.05	.15	.5
1350	.05	.15	.5
1365	.05	.15	.5
1380	.05	.15	.5
1395	.05	.15	.5
1410	.05	.15	.5
1425	.05	.15	.5
1440	.05	.15	.5
1455	.05	.15	.5
1470	.05	.15	.5
1485	.05	.15	.5
1500	.05	.15	.5
1515	.05	.15	.5
1530	.05	.15	.5
1545	.05	.15	.5
1560	.05	.15	.5
1575	.05	.15	.5
1590	.05	.15	.5
1605	.05	.15	.5
1620	.05	.15	.5
1635	.05	.15	.5
1650	.05	.15	.5
1665	.05	.15	.5
1680	.05	.15	.5
1695	.05	.15	.5
1710	.05	.15	.5
1725	.05	.15	.5
1740	.05	.15	.5
1755	.05	.15	.5
1770	.05	.15	.5
1785	.05	.15	.5
1800	.05	.15	.5
1815	.05	.15	.5
1830	.05	.15	.5
1845	.05	.15	.5
1860	.05	.15	.5
1875	.05	.15	.5
1890	.05	.15	.5
1905	.05	.15	.5
1920	.05	.15	.5
1935	.05	.15	.5
1950	.05	.15	.5
1965	.05	.15	.5
1980	.05	.15	.5
1995	.05	.15	.5
2010	.05	.15	.5
2025	.05	.15	.5
2040	.05	.15	.5
2055	.05	.15	.5
2070	.05	.15	.5
2085	.05	.15	.5
2100	.05	.15	.5
2115	.05	.15	.5
2130	.05	.15	.5
2145	.05	.15	.5
2160	.05	.15	.5
2175	.05	.15	.5
2190	.05	.15	.5
2205	.05	.15	.5
2220	.05	.15	.5
2235	.05	.15	.5
2250	.05	.15	.5
2265	.05	.15	.5
2280	.05	.15	.5
2295	.05	.15	.5
2310	.05	.15	.5
2325	.05	.15	.5
2340	.05	.15	.5
2355	.05	.15	.5
2370	.05	.15	.5
2385	.05	.15	.5
2400	.05	.15	.5
2415	.05	.15	.5
2430	.05	.15	.5
2445	.05	.15	.5
2460	.05	.15	.5
2475	.05	.15	.5
2490	.05	.15	.5
2505	.05	.15	.5
2520	.05	.15	.5
2535	.05	.15	.5
2550	.05	.15	.5
2565	.05	.15	.5
2580	.05	.15	.5
2595	.05	.15	.5
2610	.05	.15	.5
2625	.05	.15	.5
2640	.05	.15	.5
2655	.05	.15	.5
2670	.05	.15	.5
2685	.05	.15	.5
2700	.05	.15	.5
2715	.05	.15	.5
2730	.05	.15	.5
2745	.05	.15	.5
2760	.05	.15	.5
2775	.05	.15	.5
2790	.05	.15	.5
2805	.05	.15	.5
2820	.05	.15	.5
2835	.05	.15	.5
2850	.05	.15	.5
2865	.05	.15	.5
2880	.05	.15	.5
2895	.05	.15	.5
2910	.05	.15	.5
2925	.05	.15	.5
2940	.05	.15	.5
2955	.05	.15	.5
2970	.05	.15	.5
2985	.05	.15	.5
3000	.05	.15	.5

This document is proprietary to CORCOM INC. and is not to be reproduced nor used for manufacturing purposes except on CORCOM's order or prior written consent.



FILTER APPROVAL.
 THE BEST WAY TO SELECT AND QUALIFY A FILTER IS FOR YOUR ENGINEERING TO TEST THE UNIT IN YOUR EQUIPMENT.



POWER LINE FILTER

SCALE	DATE	DRG. NO.	REV.
NTS	4-25-88	20AYT6C & 30AYT6C	4
DESIGNED BY	ORIGINATOR		
LJD	CFW		

X-ON Electronics

Largest Supplier of Electrical and Electronic Components

Click to view similar products for [Power Line Filters](#) category:

Click to view products by [TE Connectivity](#) manufacturer:

Other Similar products are found below :

[6609019-3](#) [6609026-5](#) [6609030-6](#) [6609973-2](#) [D30A](#) [7-1609090-5](#) [F2810](#) [F4456A](#) [F7382Z](#) [F7863Z](#) [FAHAV3100ZC000](#) [806276](#) [FN2020B-1-06](#) [FN2080B-10-06](#) [FN2410H-32-33](#) [FN2410H-80-34](#) [FP144](#) [FS4153-20-06](#) [FS4353-500-99](#) [12-MMB-030-11-D](#) [DB4-393](#) [15811T200](#) [20B1](#) [LC630](#) [2B1](#) [1609080-2](#) [1609993-8](#) [1-6609070-1](#) [F1100AA02](#) [F1150CC10](#) [F1500CA10](#) [F1500CA15](#) [F4041Z](#) [F7585E](#) [1B1](#) [FN2070A-16-06](#) [FN2090A-20-06](#) [FN2090B-12-06](#) [FN2090Z-1-06](#) [FN2410H-25-33](#) [FN2410H-60-34](#) [FN2410H-8-44](#) [FN2412H-8-44](#) [FN323B-6-01](#) [FN3258H-130-35](#) [FN610R-3-06](#) [20EHQ7](#) [20EHZ7](#) [20K1](#) [30B6](#)