

4

3

2

1

This drawing involves proprietary design rights of Tyco Electronics Corporation, and all design, manufacture, reproduction, use and sale rights regarding the same are expressly reserved. It is submitted for a specific purpose and the recipient by accepting this drawing, assumes custody and control and agrees to take reasonable precautions: (a) that this drawing will not be copied and reproduced, in whole or in part, or its contents revealed in any manner, or to any person except to meet the purpose for which it was delivered and (b) that any special features peculiar to this design will not be incorporated in other projects without the expressed written permission of Tyco Electronics Corporation.

REVISIONS			
EC	REV	DESCRIPTION	DATE
CPR	A	NEW RELEASE	11/28/05

7 ITEM PROVIDED TO THIS SPECIFICATION TO BE PERMANENTLY IDENTIFIED PER THE FOLLOWING IDENTIFIER:



6. REFERENCE DIMENSION (X.XX) IS WITHOUT TOLERANCE AND USED FOR INFORMATION ONLY.

5 MOUNTING HARDWARE: SHOULDER SCREW REF. ELCON PN 903-0134-02113 TO BE ORDERED SEPARATELY. SHOWN FOR REFERENCE ONLY.

4 SOCKET CRIMP CONTACTS TO BE PACKAGED SEPARATELY AND SHIPPED LOOSE WITH THE CONNECTOR ASSEMBLY.

3. FINISHES:
 SIZE #16 CRIMP CONTACTS: SILVER PLATED.
 SIZE #20 CRIMP CONTACTS: GOLD PLATED.
 CROWN BANDS: GOLD PLATED.

2. MATERIALS:
 HOUSINGS: THERMOPLASTIC, GLASS REINFORCED,
 UL94V-0 FLAMMABILITY RATED, COLOR-BLACK.
 PIN CONTACTS: TELLURIUM COPPER ALLOY
 SOCKET CONTACTS: LEAD COPPER
 CROWN BANDS: BERYLLIUM COPPER
 RETENTION CLIPS: BERYLLIUM COPPER OR STAINLESS STEEL

1. PART NUMBER CHANGES AND/OR DESIGN CHANGES AFFECTING ITEM INTERCHANGEABILITY REQUIRE PRIOR ELCON APPROVAL AND AUTHORIZATION BY REVISION TO THIS DRAWING.

NOTES: UNLESS OTHERWISE SPECIFIED

TABLE - SOCKET CONNECTOR PN 6643739-1			
PART NUMBER	DESCRIPTION	POSITION	QTY
1648712-1	HOUSING, SOCKET, FRONT	N/A	1
1648714-1	HOUSING, SOCKET, REAR INSERT	N/A	1
1650483-1	RETENTION CLIP, #16	1-6, 19-24	12
1650484-1	RETENTION CLIP, #20	7-18	12
1766841-1	SCREW, SELF TAPPING, Ø2.5 X 10.00mm LONG	N/A	2
6648319-1	CONTACT, SOCKET #16, CRIMP	1-6, 19-24	12
1648325-1	CONTACT, SOCKET, #20, CRIMP	7-18	12

 THIRD ANGLE PROJECTION	DRAWN MC CANT/M. ALIM	DATE 11/28/05	Tyco Electronics Corporation Menlo Park, Ca 94025		
	CHECKED		TITLE CONNECTOR, SOCKET P12S12 MINI DRAWER PN 6643739-1		
UNLESS OTHERWISE SPECIFIED DIMENSIONS ARE IN METRIC [INCHES] TOLERANCES ANGLES ± .5° DECIMALS .XX ± .25 [.010] .X ± .5 [.020]	APPROVED		SIZE B		DWG NUMBER C = 6643739
	APPROVED D. CHAU	11/28/05	REV. A		
	DCA APPROVED M. ALIM	11/28/05	ACAD FILE NUMBER C6643739A.DWG		DWG SCALE 1=1 SH 1 OF 4

4

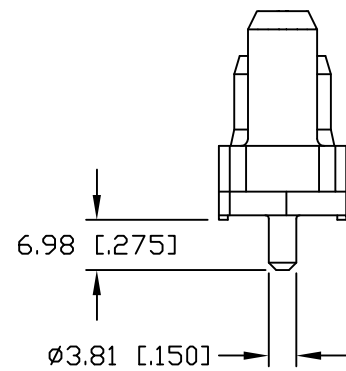
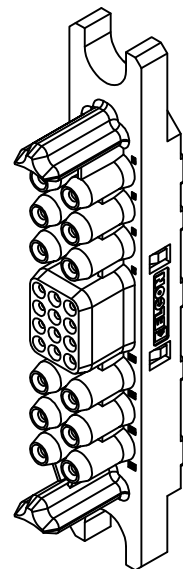
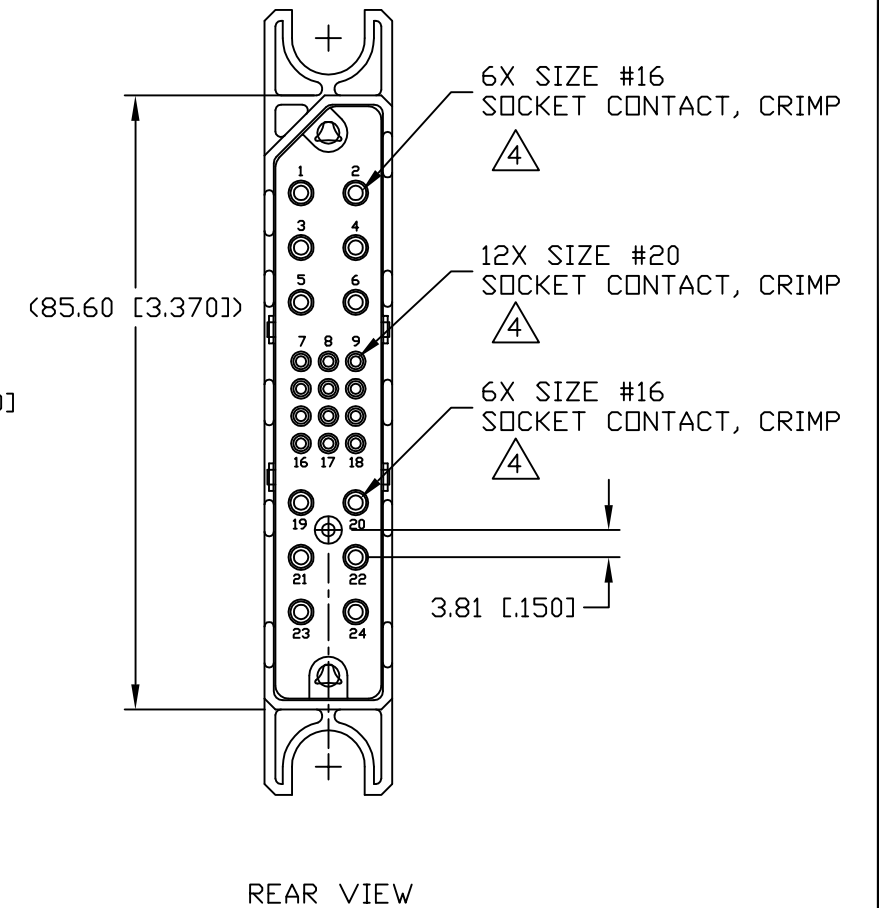
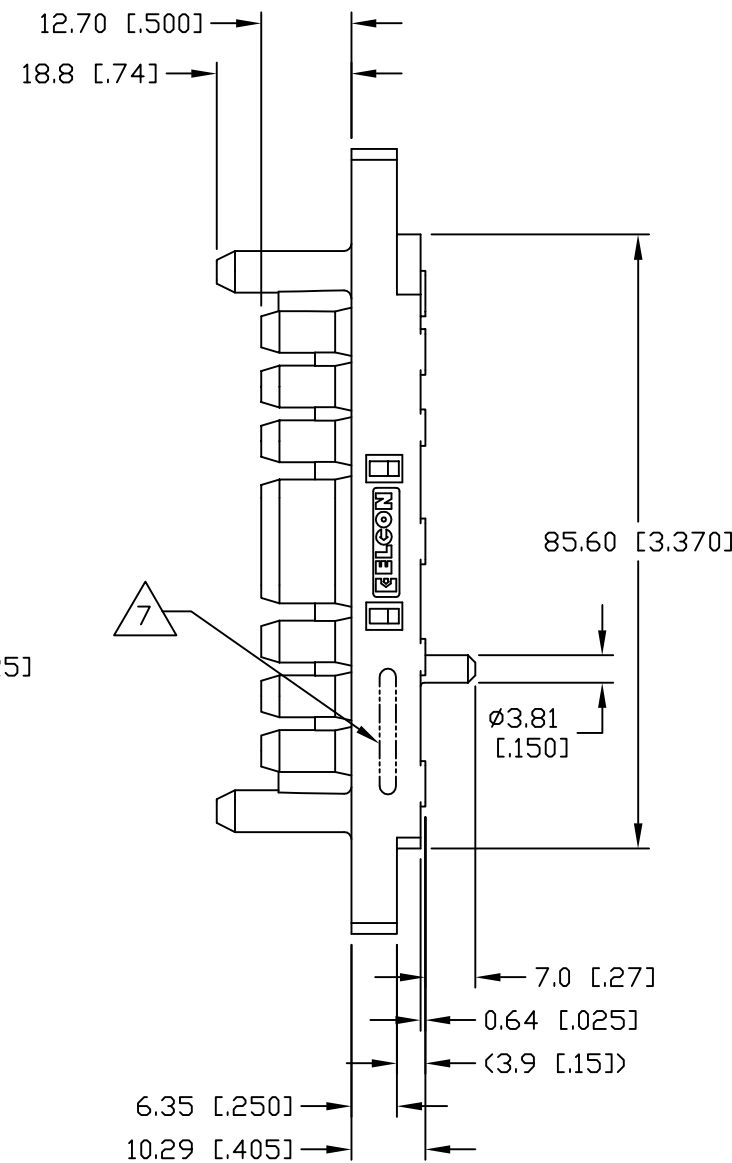
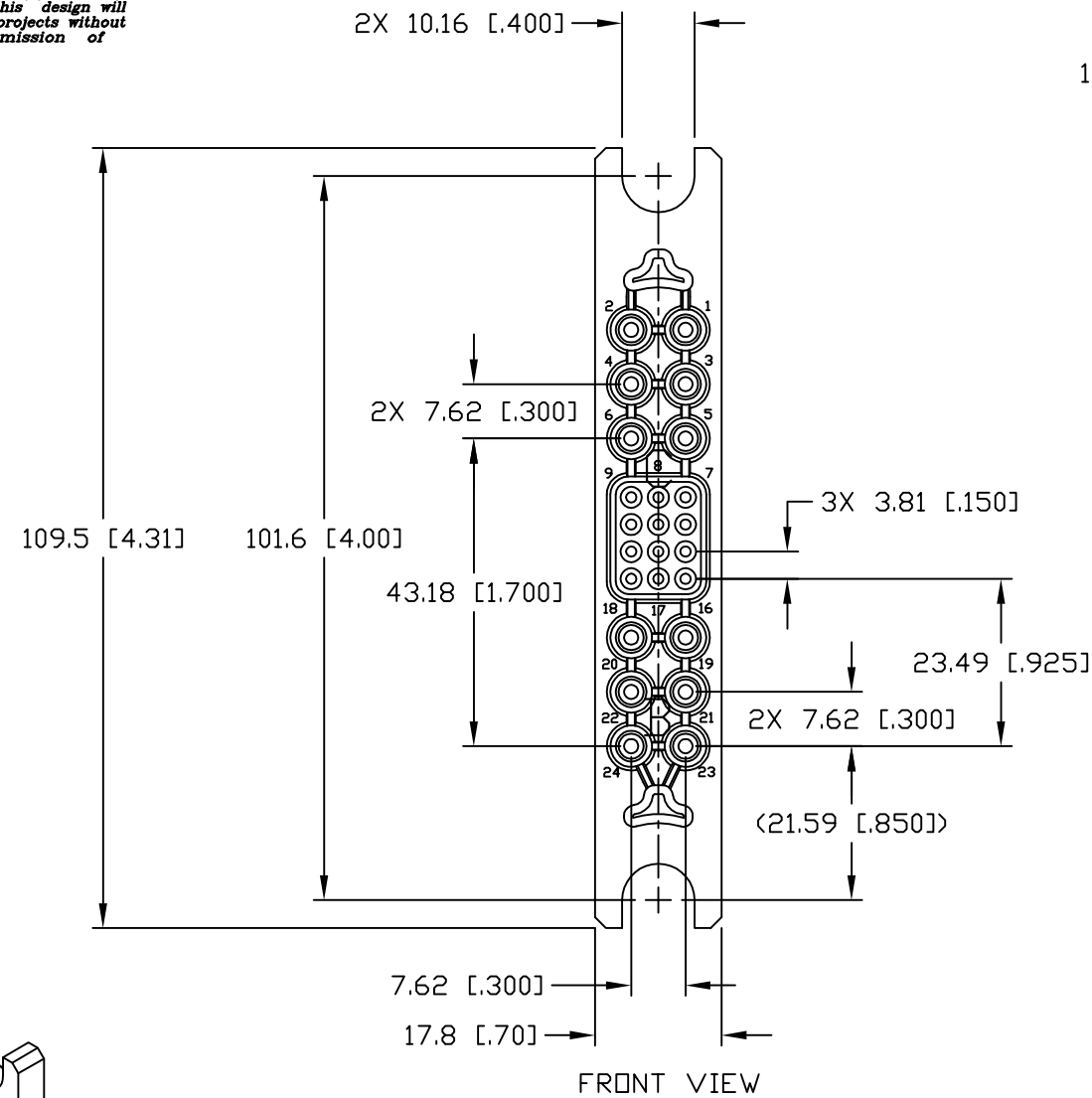
3

2

1

This drawing involves proprietary design rights of Tyco Electronics Corporation, and all design, manufacture, reproduction, use and sale rights regarding the same are expressly reserved. It is submitted for a specific purpose and the recipient by accepting this drawing, assumes custody and control and agrees to take reasonable precautions: (a) that this drawing will not be copied and reproduced in whole or in part, or its contents revealed in any manner, or to any person except to meet the purpose for which it was delivered and (b) that any special features peculiar to this design will not be incorporated in other projects without the expressed written permission of Tyco Electronics Corporation.

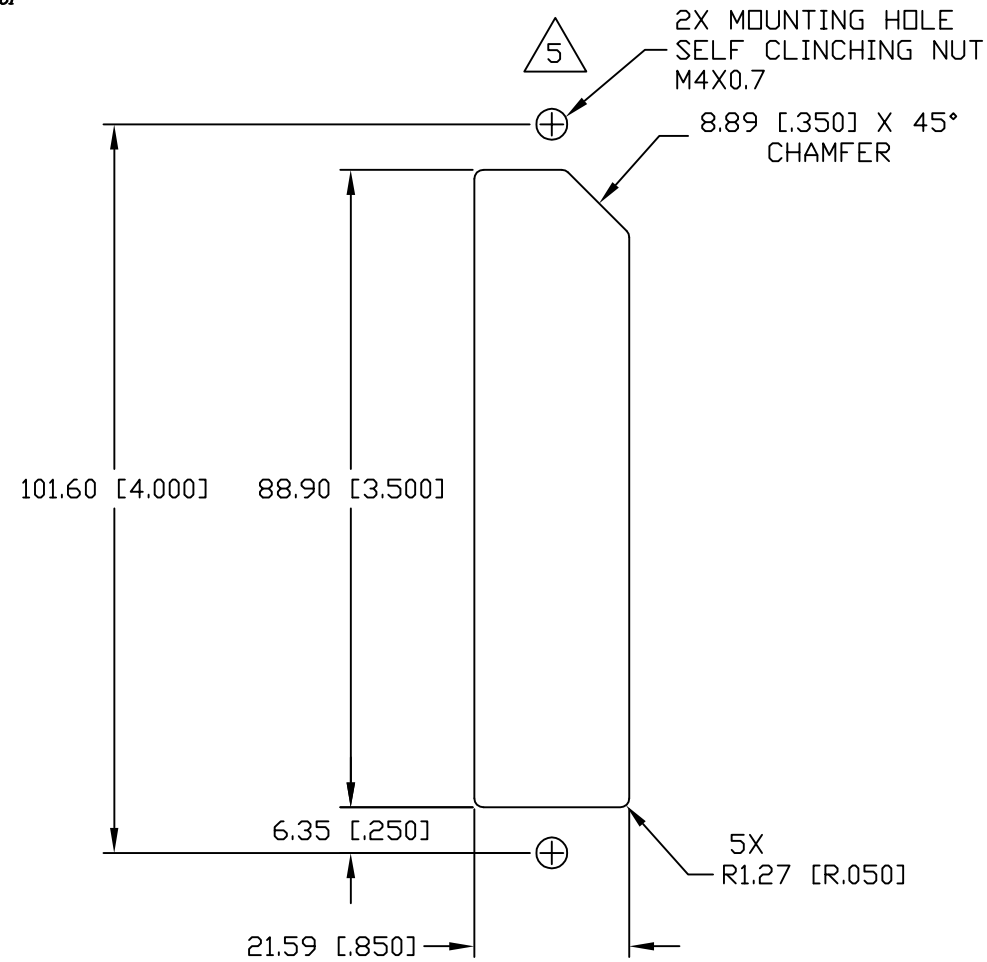
REVISIONS			
EC	REV	DESCRIPTION	DATE
		SEE SHEET 1	



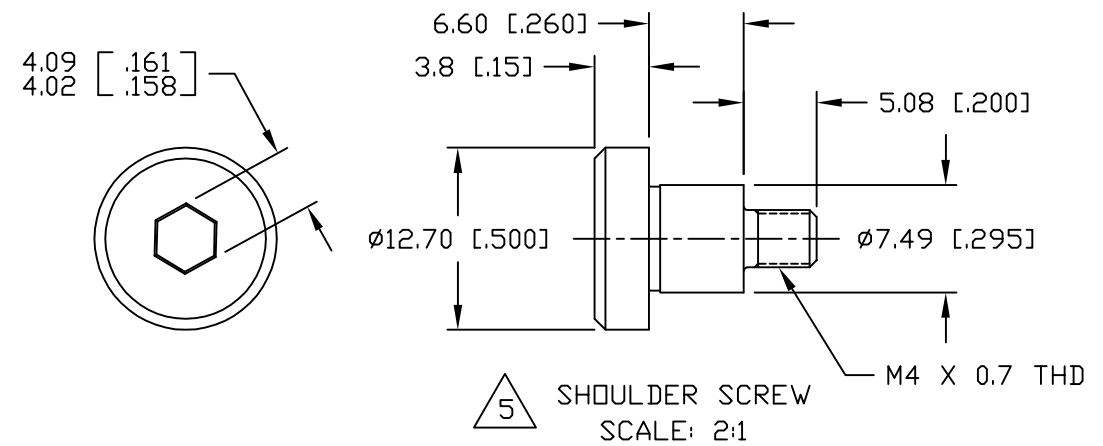
← MM OR MM [INCH] THIRD ANGLE PROJECTION UNLESS OTHERWISE SPECIFIED DIMENSIONS ARE IN METRIC [INCHES] TOLERANCES ANGLES ± .5° DECIMALS .XX ± .25 [.010] .X ± .5 [.020]	DRAWN	MC CANT/M. ALIM	DATE	Tyco Electronics Corporation Menlo Park, Ca 94025	
	CHECKED			TITLE	
	APPROVED			CONNECTOR, SOCKET P12S12 MINI DRAWER PN 6643739-1	
	APPROVED	D. CHAU	11/28/05	SIZE	DWG NUMBER
	M. ALIM	11/28/05	B	C = 6643739	A
	ACAD FILE NUMBER	C6643739A.DWG		DWG SCALE	1=1 SH 2 OF 4

This drawing involves proprietary design rights of Tyco Electronics Corporation, and all design, manufacture, reproduction, use and sale rights regarding the same are expressly reserved. It is submitted for a specific purpose and the recipient by accepting this drawing, assumes custody and control and agrees to take reasonable precautions: (a) that this drawing will not be copied and reproduced in whole or in part, or its contents revealed in any manner, or to any person except to meet the purpose for which it was delivered and (b) that any special features peculiar to this design will not be incorporated in other projects without the expressed written permission of Tyco Electronics Corporation.

REVISIONS			
EC	REV	DESCRIPTION	DATE
		SEE SHEET 1	



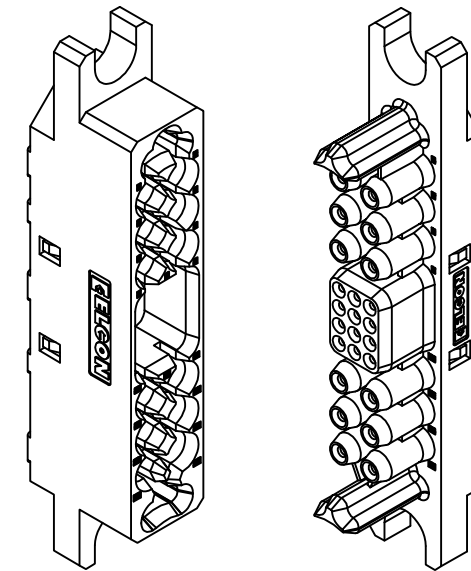
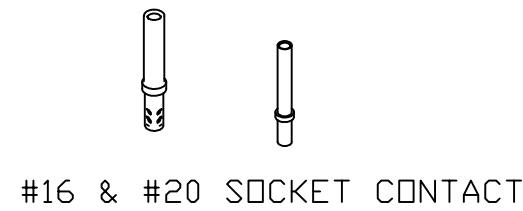
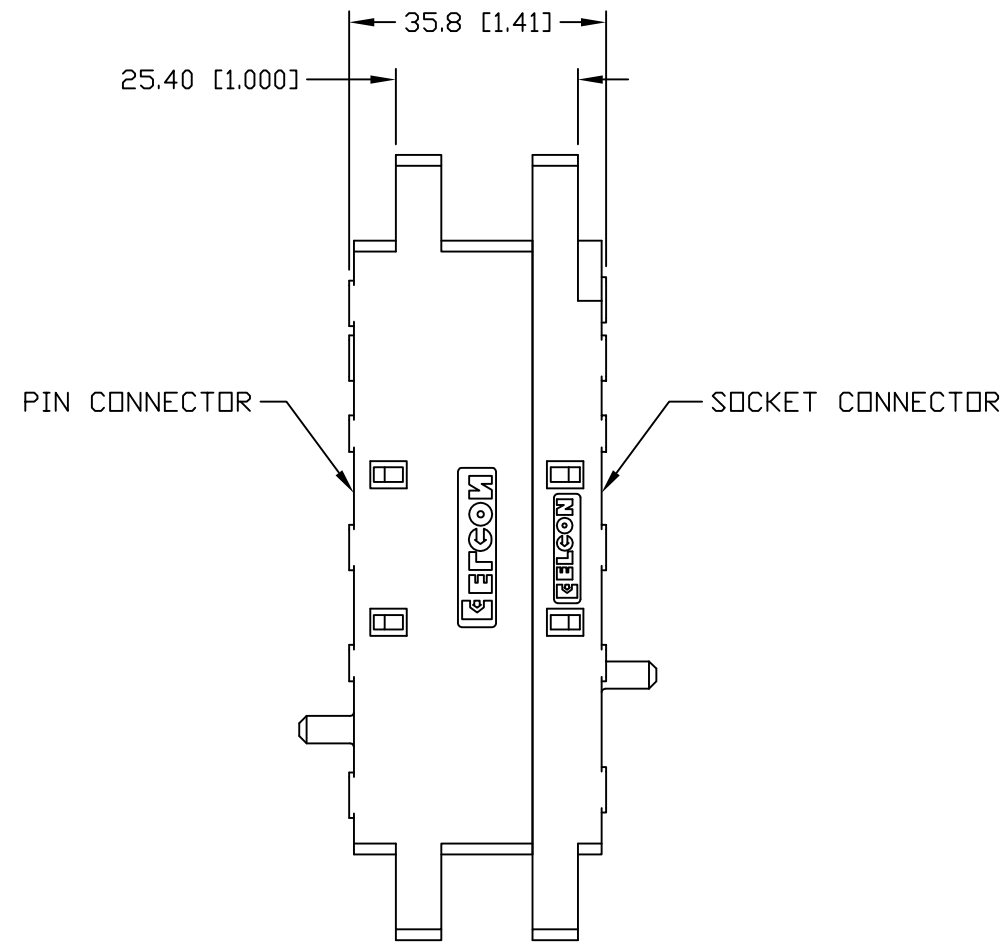
SUGGESTED PANEL CUTOUT
VIEWED FROM CONNECTOR MOUNTING SIDE



<p>THIRD ANGLE PROJECTION</p> <p>UNLESS OTHERWISE SPECIFIED DIMENSIONS ARE IN METRIC [INCHES]</p> <p>TOLERANCES</p> <p>ANGLES ± .5°</p> <p>DECIMALS</p> <p>.XX ± .25 [.010]</p> <p>.X ± .5 [.020]</p>	<p>MM OR MM [INCH]</p>	<p>DRAWN</p> <p>MC CANT/M. ALIM</p>	<p>DATE</p> <p>11/28/05</p>	<p>tyco Tyco Electronics Corporation ELCON</p> <p>Menlo Park, Ca 94025</p>		
	<p>CHECKED</p>	<p>APPROVED</p>	<p>APPROVED</p>	<p>TITLE</p> <p>CONNECTOR, SOCKET</p> <p>P12S12 MINI DRAWER</p> <p>PN 6643739-1</p>		
	<p>D. CHAU</p>	<p>DCA APPROVED</p>	<p>M. ALIM</p>	<p>11/28/05</p>	<p>11/28/05</p>	<p>SIZE DWG NUMBER</p> <p>B C = 6643739</p>
	<p>ACAD FILE NUMBER</p> <p>C6643739A.DWG</p>	<p>DWG SCALE</p> <p>1=1</p>	<p>SH</p> <p>3 OF 4</p>	<p>REV.</p> <p>A</p>		

This drawing involves proprietary design rights of Tyco Electronics Corporation, and all design, manufacture, reproduction, use and sale rights regarding the same are expressly reserved. It is submitted for a specific purpose and the recipient by accepting this drawing, assumes custody and control and agrees to take reasonable precautions; (a) that this drawing will not be copied and reproduced, in whole or in part, or its contents revealed in any manner, or to any person except to meet the purpose for which it was delivered and (b) that any special features peculiar to this design will not be incorporated in other projects without the expressed written permission of Tyco Electronics Corporation.

REVISIONS			
EC	REV	DESCRIPTION	DATE
		SEE SHEET 1	



MATED CONDITION

<p>THIRD ANGLE PROJECTION</p> <p>UNLESS OTHERWISE SPECIFIED DIMENSIONS ARE IN METRIC [INCHES]</p> <p>TOLERANCES</p> <p>ANGLES ± .5°</p> <p>DECIMALS</p> <p>.XX ± .25 [.010]</p> <p>.X ± .5 [.020]</p>	<p>DRAWN</p> <p>MC CANT/M. ALIM</p>	<p>DATE</p> <p>11/28/05</p>	<p>tyco Tyco Electronics Corporation ELCON Menlo Park, Ca 94025</p>	
	CHECKED		TITLE	
	APPROVED		USER INFORMATION AND MATED CONDITION	
	APPROVED		PN 6643739-1	
	D. CHAU	11/28/05	SIZE	DWG NUMBER
	DCA APPROVED		B	C = 6643739
	M. ALIM	11/28/05		REV. A
	ACAD FILE NUMBER	C6643739A.DWG	DWG SCALE	1=1 SH 4 OF 4

X-ON Electronics

Largest Supplier of Electrical and Electronic Components

Click to view similar products for [Heavy Duty Power Connectors](#) category:

Click to view products by [TE Connectivity](#) manufacturer:

Other Similar products are found below :

[1424439](#) [1424438](#) [09330062652](#) [2-8675P1](#) [605601-1](#) [6340G1](#) [6341G1](#) [6360G1](#) [6373G1](#) [6374g2](#) [6396G1](#) [647757-1](#) [66394-4](#) [6643411-1](#)
[6646058-2](#) [6646137-1](#) [6646138-1](#) [6646348-1](#) [6646479-1](#) [6646608-1](#) [6646786-1](#) [6646940-1](#) [6651091-1](#) [6651525-1](#) [6651529-1](#) [6651778-1](#)
[6651788-1](#) [696465-1](#) [696475-1](#) [73000005059](#) [73000005349](#) [73000005642](#) [73080255059](#) [73080965046](#) [765-15-0080A](#) [765-16-0080B](#)
[789.700-44](#) [789.700-54](#) [80-1010](#) [80-9](#) [827381-1](#) [829992-1](#) [902-77-02113](#) [PL00U-301-10D10](#) [PM103MOOLOO](#) [PM16S1620S32-50](#)
[PM212MOOLOO](#) [PM309FOOLOO](#) [PM324FOOLCH](#) [PMHPAF11S03](#)