

This drawing involves proprietary design rights of Tyco Electronics Corporation, and all design, manufacture, reproduction, use and sale rights regarding the same are expressly reserved. It is submitted for a specific purpose and the recipient by accepting this drawing, assumes custody and control and agrees to take reasonable precautions; (a) that this drawing will not be copied and reproduced, in whole or in part, or its contents revealed in any manner, or to any person except to meet the purpose for which it was delivered and (b) that any special features peculiar to this design will not be incorporated in other projects without the expressed written permission of Tyco Electronics Corporation.

REVISIONS			
EC	REV	DESCRIPTION	DATE
-	A	NEW RELEASE	08/29/05
-	A1	UPDATED REFERENCE TYCO PART NUMBERS	09/23/05

NOTES: UNLESS OTHERWISE SPECIFIED

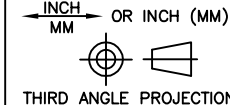


- PART NUMBER CHANGES AND OR DESIGN CHANGES AFFECTING ITEM INTERCHANGEABILITY REQUIRE PRIOR ELCON APPROVAL AND AUTHORIZATION BY REVISION TO THIS DRAWING.
- ITEMS PROVIDED TO THIS SPECIFICATION SHALL BE PERMANENTLY IDENTIFIED WITH THE FOLLOWING INFORMATION: MFG. IDENTIFICATION, PART NUMBER AND DATE CODE OF MANUFACTURE.
- MOUNTING FLANGES BUSHING ACCEPT 6/32 SCREW (ϕ .156 CLEARANCE HOLE, FLOAT MOUNT) OR 8/32 SCREW (ϕ .173 CLEARANCE HOLE, FIXED MOUNT), USER SUPPLIED.
- FINISH:
SIZE #12 CRIMP CONTACT - SILVER PLATED
- A MODULE CRIMP CONTACTS ARE PACKAGED SEPARATELY WITH THE CONNECTOR ASSEMBLY AND SHIPPED AS A KIT.
- SOCKET CONNECTOR ASSEMBLY INCLUDES END CAPS, LOCKING RAILS, SCREWS, HEX NUTS AND WASHERS.

7. REFERENCE SOCKET MODULE/CONTACT TABLE

MODULE	MOD QTY	PART NUMBER	DESCRIPTION	CONTACT SIZE	CONTACT QTY
A	1	1648466-1	SOCKET HOUSING, A MODULE	NONE	NONE
		6648318-1	SOCKET CONTACT, CRIMP	12	3

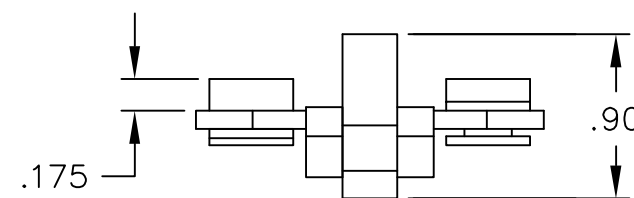
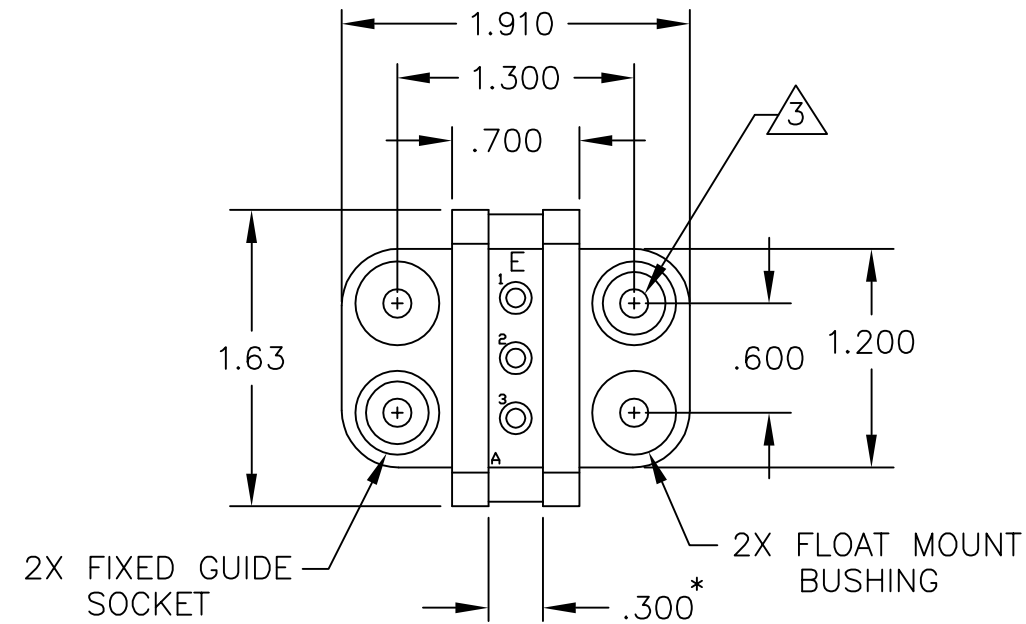
- MATES WITH PIN CONNECTOR PN 6646085-1 (CUSTOMER DRAWING C-6646085).
- REFERENCE TYCO PART NUMBER 6646086-1.

PART NUMBER	DESCRIPTION	QTY
6648252-1	END CAP, FLOAT MOUNT GUIDE SOCKET	2
1650469-1	LOCKING RAIL, EXTRUDED (TOP & BOTTOM RAILS)	2
1766846-1	SCREW, PAN HEAD, #2-64 x .625 LONG	2
1-5021068-7	NUT, HEX, MACHINE SCREW	2
1766850-1	WASHER, FLAT	2
5021074-1	WASHER, SPRING LOCK	2

 THIRD ANGLE PROJECTION UNLESS OTHERWISE SPECIFIED DIMENSIONS ARE IN INCHES (METRIC) TOLERANCES ANGLES \pm .5' DECIMALS .XXX \pm .010 (.25) .XX \pm .02 (.3)	DRAWN M. ALIM	DATE 08/29/05	 Tyco Electronics Corporation Menlo Park, Ca 94025 
	CHECKED		
	APPROVED		
	APPROVED	09/23/05	SIZE DWG NUMBER B C-6646086
	D. CHAU	09/23/05	REV. A1
	DCA APPROVED		
	M. ALIM	09/23/05	
	ACAD FILE NUMBER	C6646086A1.DWG	DWG SCALE 1=1 SH 1 OF 3

This drawing involves proprietary design rights of Tyco Electronics Corporation, and all design, manufacture, reproduction, use and sale rights regarding the same are expressly reserved. It is submitted for a specific purpose and the recipient by accepting this drawing, assumes custody and control and agrees to take reasonable precautions: (a) that this drawing will not be copied and reproduced, in whole or in part, or its contents revealed in any manner, or to any person except to meet the purpose for which it was delivered and (b) that any special features peculiar to this design will not be incorporated in other projects without the expressed written permission of Tyco Electronics Corporation.

REVISIONS			
EC	REV	DESCRIPTION	DATE
		SEE SHEET 1	

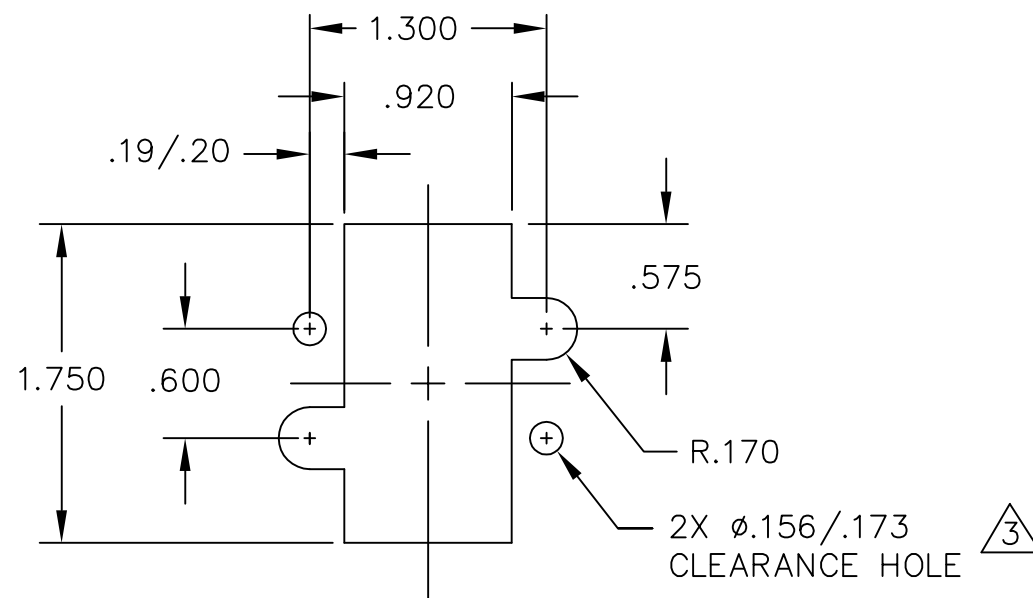


* ACTUAL RAIL LENGTH SHALL BE .400

INCH OR INCH (MM) THIRD ANGLE PROJECTION UNLESS OTHERWISE SPECIFIED DIMENSIONS ARE IN INCHES (METRIC) TOLERANCES ANGLES ± .5' DECIMALS .XXX ± .010 (.25) .XX ± .02 (.3)	DRAWN M. ALIM	DATE 08/29/05	 Tyco Electronics Corporation Menlo Park, Ca 94025 	TITLE CONNECTOR, SOCKET, DOMINO SOCKET CONFIGURATION PN 6646086-1	
	CHECKED				
	APPROVED		APPROVED		
	D. CHAU	09/23/05	APPROVED		
	DCA APPROVED M. ALIM	09/23/05	SIZE B	DWG NUMBER C-6646086	
	ACAD FILE NUMBER C6646086A1.DWG		DWG SCALE 1=1	REV. A1	
				SH 2 OF 3	

This drawing involves proprietary design rights of Tyco Electronics Corporation, and all design, manufacture, reproduction, use and sale rights regarding the same are expressly reserved. It is submitted for a specific purpose and the recipient by accepting this drawing, assumes custody and control and agrees to take reasonable precautions: (a) that this drawing will not be copied and reproduced, in whole or in part, or its contents revealed in any manner, or to any person except to meet the purpose for which it was delivered and (b) that any special features peculiar to this design will not be incorporated in other projects without the expressed written permission of Tyco Electronics Corporation.

REVISIONS			
EC	REV	DESCRIPTION	DATE
		SEE SHEET 1	



SOCKET PANEL MOUNT CUTOUT

INCH OR INCH (MM) THIRD ANGLE PROJECTION UNLESS OTHERWISE SPECIFIED DIMENSIONS ARE IN INCHES (METRIC) TOLERANCES ANGLES ± .5' DECIMALS .XXX ± .010 (.25) .XX ± .02 (.3)	DRAWN M. ALIM	DATE 08/29/05	 Tyco Electronics Corporation Menlo Park, Ca 94025 	TITLE CONNECTOR, SOCKET, DOMINO PANEL MOUNT CUTOUT PN 6646086-1				
	CHECKED							
	APPROVED		APPROVED	D. CHAU	09/23/05	SIZE B	DWG NUMBER C= 6646086	REV. A1
	DCA APPROVED	M. ALIM	09/23/05	ACAD FILE NUMBER C6646086A1.DWG		DWG SCALE 1=1	SH 3 OF 3	

X-ON Electronics

Largest Supplier of Electrical and Electronic Components

Click to view similar products for [Heavy Duty Power Connectors](#) category:

Click to view products by [TE Connectivity](#) manufacturer:

Other Similar products are found below :

[647757-1](#) [6643411-1](#) [6646058-2](#) [6646137-1](#) [6646138-1](#) [6646479-1](#) [6646608-1](#) [6646786-1](#) [6646940-1](#) [6651091-1](#) [6651525-1](#) [6651529-1](#)
[6651788-1](#) [696475-1](#) [702-32-01109](#) [703-25-02205](#) [73000005059](#) [73000005642](#) [73080255059](#) [73080965046](#) [765-15-0080A](#) [765-16-0080B](#)
[765-18-0080D](#) [829992-1](#) [902-77-02113](#) [PS00/A0620/6300](#) [PS25/A0420/63](#) [129-1J](#) [1409400](#) [AN0024023](#) [E6374G1](#) [e6389g2](#) [157-43GW8](#)
[MS3117-14AC](#) [1643543-1](#) [1650540-1](#) [1651811-2](#) [1766260-1](#) [1766282-1](#) [1766966-1](#) [1791340000](#) [NLDFT-3-BL-L-S120-M40A](#) [NLDFT-N-](#)
[W-L-C240-M40B](#) [NLS-2-R-C240-M40B](#) [NLS-N-W-C240-M40B](#) [NPS-3-BL-T6](#) [1986615-1](#) [2-1589900-8](#) [2199314-1](#) [KA8102](#)