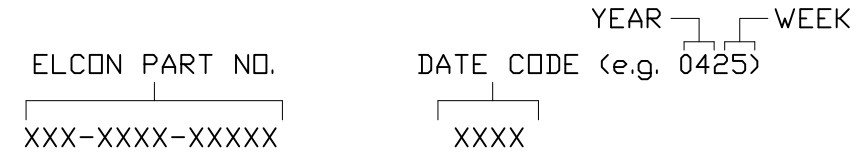


REVISIONS			
EC	REV	DESCRIPTION	DATE
	A2	REVISED PER ECO-11-005140	25MAR11

8. ITEMS PROVIDED TO THIS SPECIFICATION TO BE PERMANENTLY IDENTIFIED PER THE FOLLOWING IDENTIFIER:



7. RECOMMENDED PRESSING FIXTURE: FIX00058 FOR COMPLIANT APPLICATION IS AVAILABLE. PLEASE CONSULT FACTORY.

6. EXAMPLE PCB CONFIGURATION.

5. THIS CONFIGURATION WITH 2-SEGMENT POWER CONNECTOR IS SHOWN FOR REFERENCE ONLY. COMBINATION OF MULTIPLE NUMBERS OF 2 AND 3 SEGMENT MODULES COULD BE USED PER USER PREFERENCE. OVERALL COMBINATION SHOULD NOT EXCEED 8.0" IN LENGTH.

4. SOCKETS ACCEPT 1.6 [.062] ± 10% THICK PC BOARD.

3. FINISHES:

CONTACTS: SELECTIVE GOLD PER MIL-G-45204, .000030" MIN. THK, OVER NICKEL PER QQ-N-290

TERMINALS: SELECTIVE TIN PER ASTM B-545, OVER NICKEL PER QQ-N-290

2. MATERIALS:

INSULATORS: THERMOPLASTIC, GLASS REINFORCED, COLOR-BLACK UL94V-0 FLAMMABILITY RATED.

POWER CONTACTS: COPPER ALLOY

1. PART NUMBER CHANGES AND OR DESIGN CHANGES AFFECTING ITEM INTERCHANGEABILITY REQUIRE PRIOR ELCON APPROVAL AND AUTHORIZATION BY REVISION TO THIS DRAWING.

NOTES: UNLESS OTHERWISE SPECIFIED;

10. OBSOLETE PARTS: OBSOLETE CIS STREAMLINING PER D.RENAUD/D.SINISI

9. PART NUMBER INFORMATION

	CONNECTOR	REFERENCE PART NO	ELCON PART NUMBER	TERMINATION TYPE	PC TAIL LENGTH DIM "A"	RECOMMENDED MOUNTING BOARD	MATING BOARD
10 OBSOLETE	SOCKET	6650534-2	287-0022-12100	SOLDER TAIL (SHORT)	3.56 [.140] 2.54 [.100]	1.6 [.062] THICK	1.6 [.062] THICK
	SOCKET	6650534-3	287-0022-12300	SOLDER TAIL (STANDARD)	5.08 [.200] 4.06 [.160]	3.2 [.125] OR THINNER	1.6 [.062] THICK
	SOCKET	6650534-1	287-0022-11300	COMPLIANT TAIL	5.08 [.200] 4.06 [.160]	2.3 [.093] OR THICKER	1.6 [.062] THICK

<p>THIRD ANGLE PROJECTION</p> <p>UNLESS OTHERWISE SPECIFIED DIMENSIONS ARE IN METRIC [INCHES]</p> <p>TOLERANCES</p> <p>ANGLES ± .5°</p> <p>DECIMALS</p> <p>.XX ± .25 [.010]</p> <p>.X ± .5 [.020]</p>	<p>← MM OR MM [INCH]</p> <p>INCH</p>	DRAWN	DATE	TE Connectivity				
	HA NGUYEN	06/24/04	CHECKED		<p>TITLE</p> <p>SOCKET CONNECTOR, CROWNEDGE</p> <p>PN: 287-0022-12100/287-0022-12300</p> <p>PN: 287-0022-11300</p>			
	APPROVED		APPROVED					
	APPROVED	06/25/04	D. CHAU			DATE		
		DCA APPROVED	07/21/04	M. ALIM	SIZE	DWG NUMBER	REV.	
		ACAD FILE NUMBER	C6650534A.DWG		B	C = 6650534	A2	
						DWG SCALE	2=1	SH 1 OF 5

4

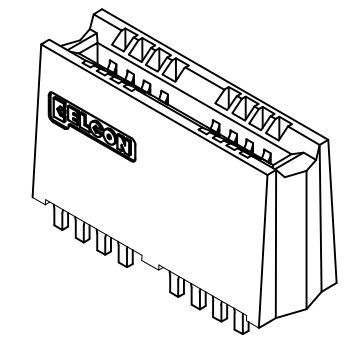
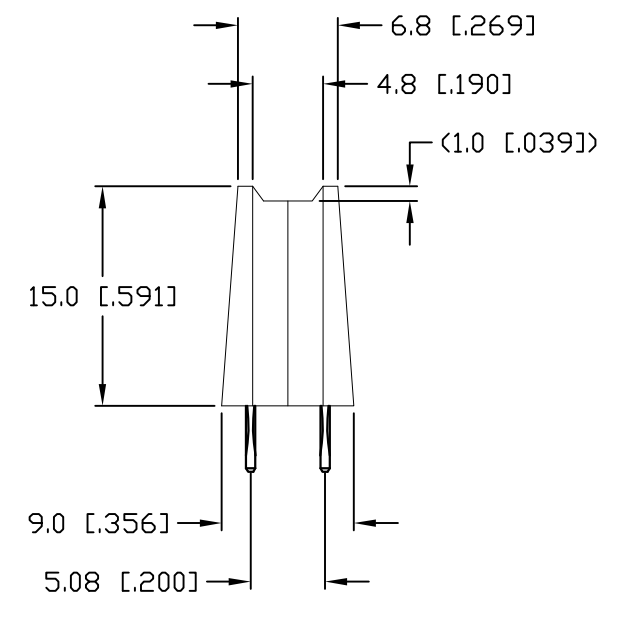
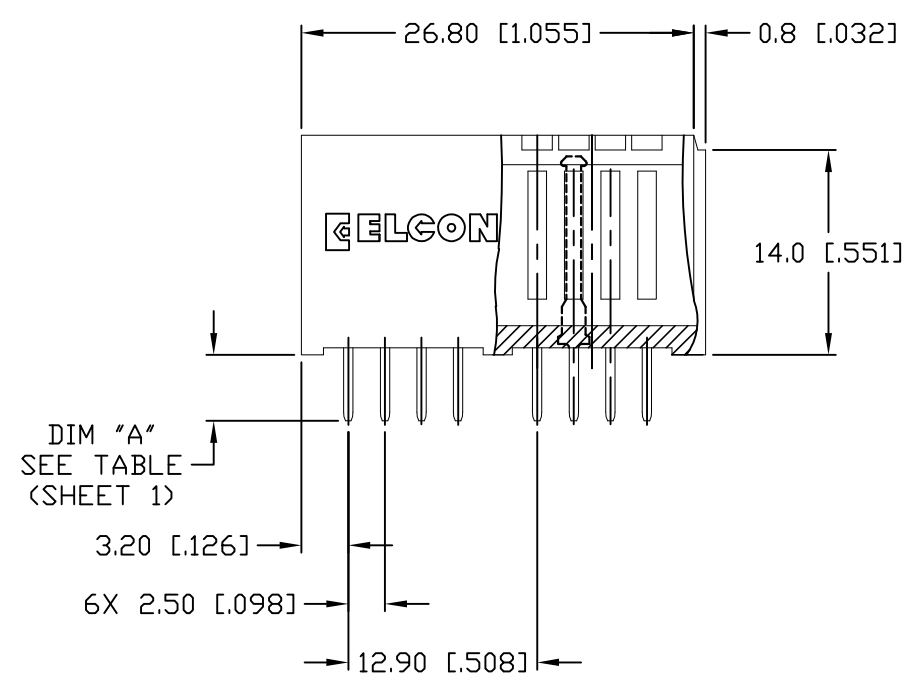
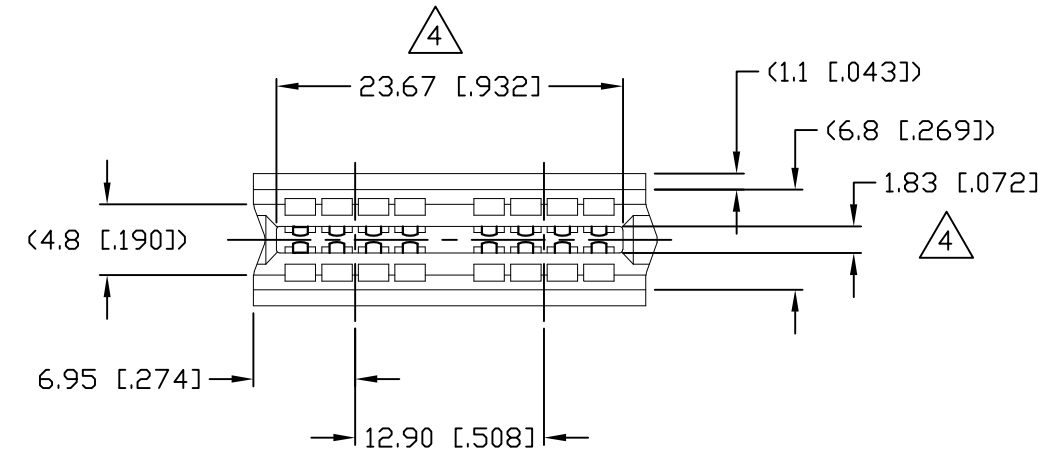
3

2

1

REVISIONS

EC	REV	DESCRIPTION	DATE
		SEE SHEET 1	



<p>← MM OR MM [INCH]</p> <p>INCH</p> <p>THIRD ANGLE PROJECTION</p> <p>UNLESS OTHERWISE SPECIFIED DIMENSIONS ARE IN METRIC [INCHES]</p> <p>TOLERANCES</p> <p>ANGLES ± .5°</p> <p>DECIMALS</p> <p>.XX ± .25 [.010]</p> <p>.X ± .5 [.020]</p>	<p>DRAWN</p> <p>HA NGUYEN</p>	<p>DATE</p> <p>06/24/04</p>	<p>STE TE Connectivity</p>		
	<p>CHECKED</p>				<p>TITLE</p> <p>SOCKET CONNECTOR, CROWNEDGE STRAIGHT, 2 SEG, 16 SIGNAL, SOLDER</p> <p>PN: 287-0022-12100/287-0022-12300</p>
	<p>APPROVED</p>		<p>APPROVED</p> <p>D. CHAU</p> <p>06/25/04</p>	<p>SIZE</p> <p>B</p>	
	<p>APPROVED</p> <p>M. ALIM</p> <p>07/21/04</p>	<p>ACAD FILE NUMBER</p> <p>C6650534A.DWG</p>	<p>DWG SCALE</p> <p>2=1</p>	<p>REV.</p> <p>A2</p>	<p>SH 2 OF 5</p>

4

3

2

1

4

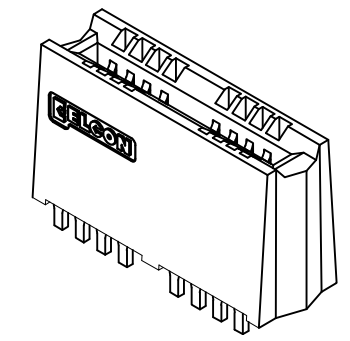
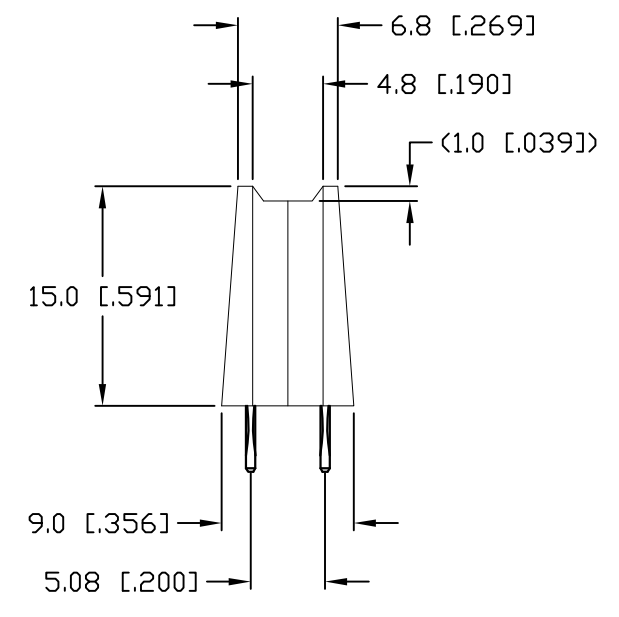
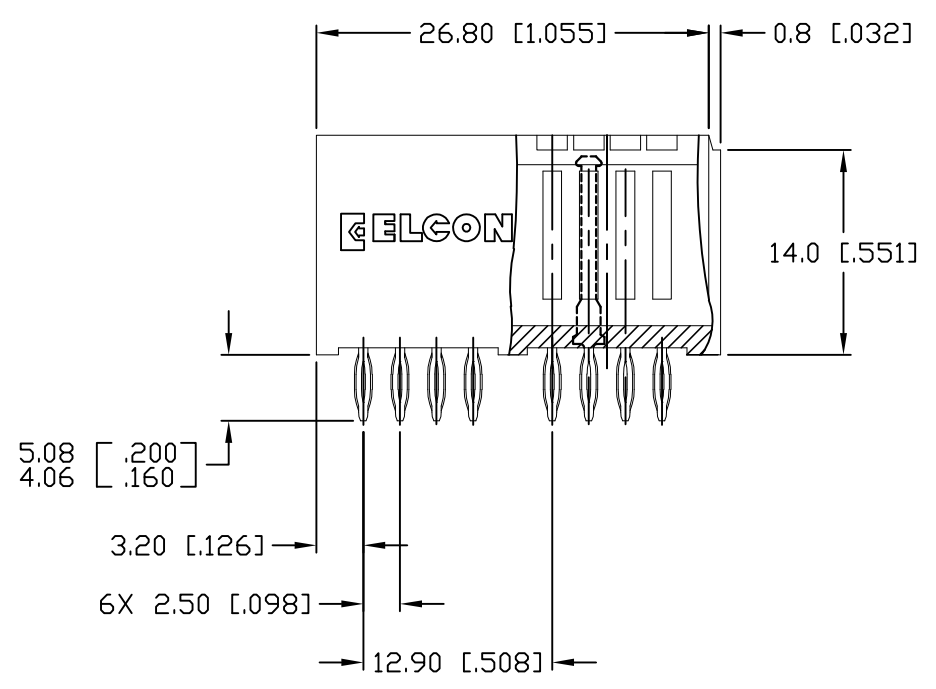
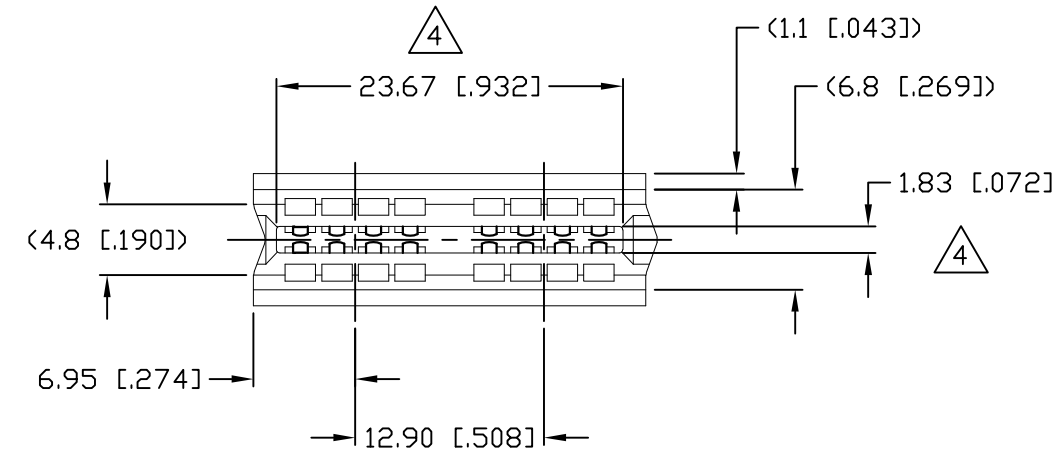
3

2

1

REVISIONS

EC	REV	DESCRIPTION	DATE
		SEE SHEET 1	



<p>← MM OR MM [INCH]</p> <p>INCH</p> <p>THIRD ANGLE PROJECTION</p> <p>UNLESS OTHERWISE SPECIFIED DIMENSIONS ARE IN METRIC [INCHES]</p> <p>TOLERANCES</p> <p>ANGLES ± .5°</p> <p>DECIMALS</p> <p>.XX ± .25 [.010]</p> <p>.X ± .5 [.020]</p>	<p>DRAWN</p> <p>HA NGUYEN</p>	<p>DATE</p> <p>06/24/04</p>	<p>STE TE Connectivity</p>		
	<p>CHECKED</p>				<p>TITLE</p> <p>SOCKET CONNECTOR, CROWNEDGE STRAIGHT, 2 SEG, 16 SIGNAL, COMPLIANT PN: 287-0022-11300</p>
	<p>APPROVED</p>		<p>SIZE</p> <p>B</p>	<p>DWG NUMBER</p> <p>C = 6650534</p>	
	<p>APPROVED</p> <p>D. CHAU</p> <p>06/25/04</p> <p>DCA APPROVED</p> <p>M. ALIM</p> <p>07/21/04</p> <p>ACAD FILE NUMBER C6650534A.DWG</p>	<p>DWG SCALE</p> <p>2=1</p>	<p>SH 3 OF 5</p>		

4

3

2

1

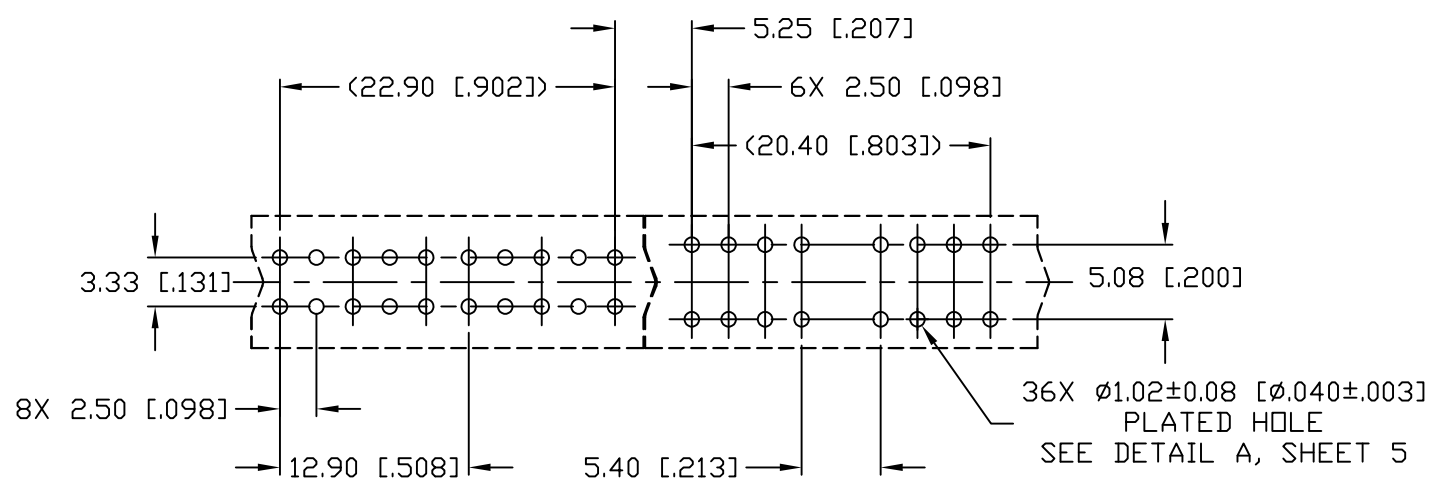
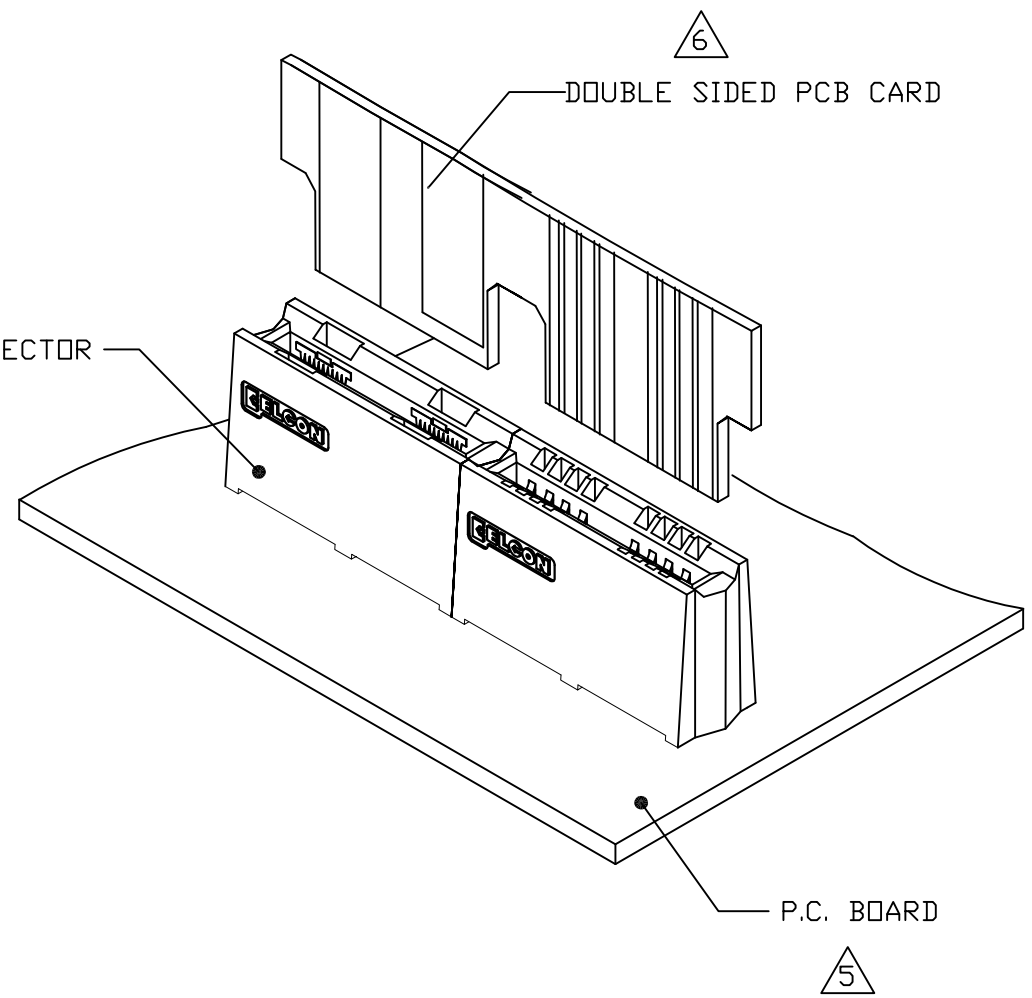
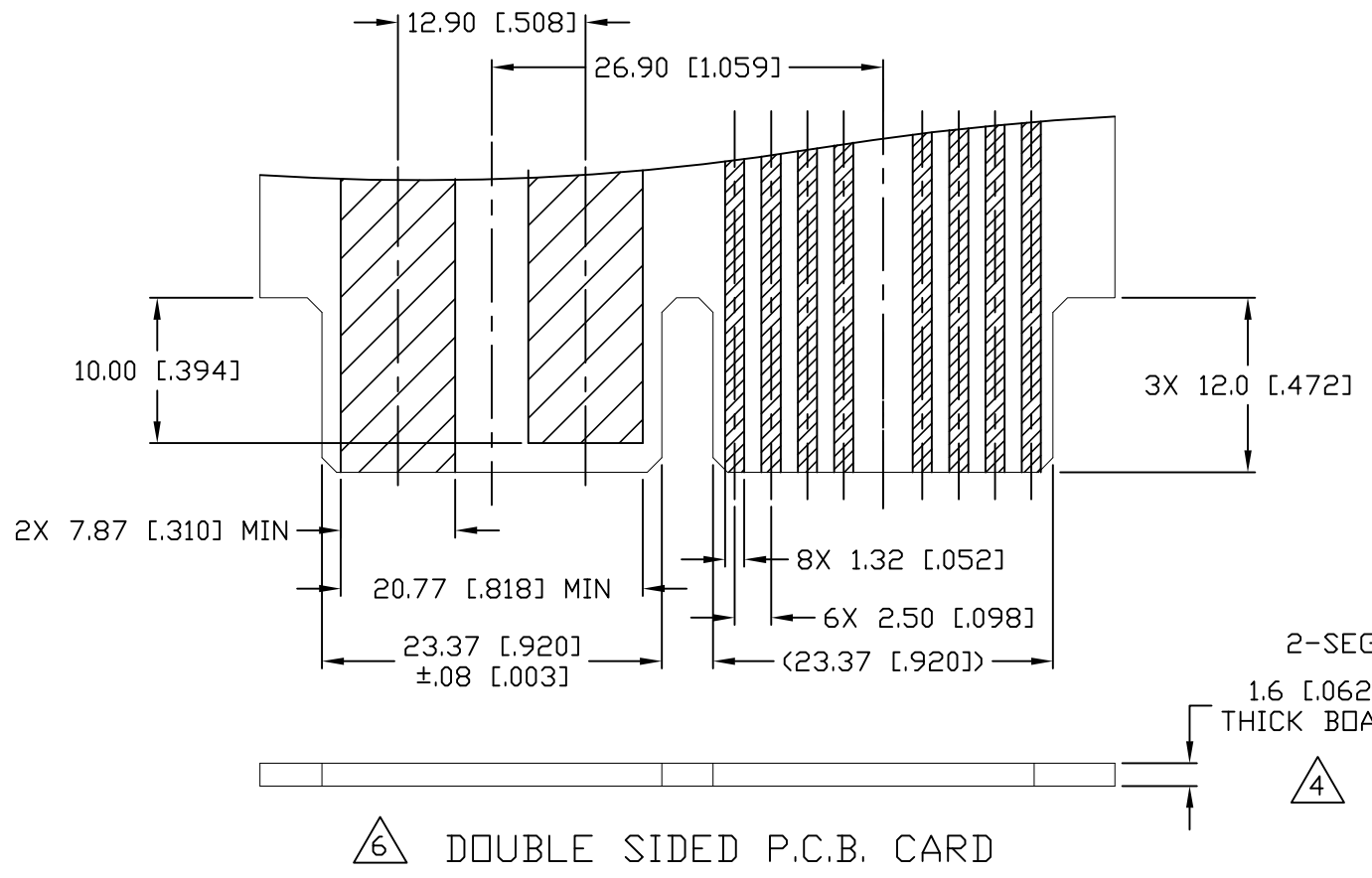
B

B

A

A

REVISIONS			
EC	REV	DESCRIPTION	DATE
		SEE SHEET 1	



5 RECOMMENDED P.C. BOARD LAYOUT

← MM OR MM [INCH]
 INCH

 THIRD ANGLE PROJECTION
 UNLESS OTHERWISE SPECIFIED DIMENSIONS ARE IN METRIC [INCHES]
 TOLERANCES
 ANGLES ± .5°
 DECIMALS
 .XX ± .25 [.010]
 .X ± .5 [.020]

DRAWN	HA NGUYEN	DATE	06/24/04
CHECKED			
APPROVED			
APPROVED	D. CHAU	DATE	06/25/04
DCA APPROVED	M. ALIM	DATE	07/21/04
ACAD FILE NUMBER	C6650534A.DWG		

TE Connectivity
 TITLE
 USER INFORMATION
 RECOMMENDED PC BOARD LAYOUT
 CROWNEDGE
 SIZE DWG NUMBER REV.
 B C = 6650534 A2
 DWG SCALE 2=1 SH 4 OF 5

4

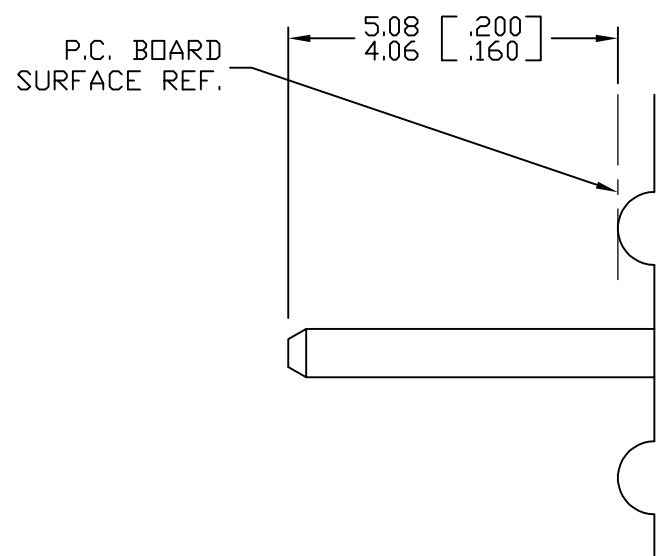
3

2

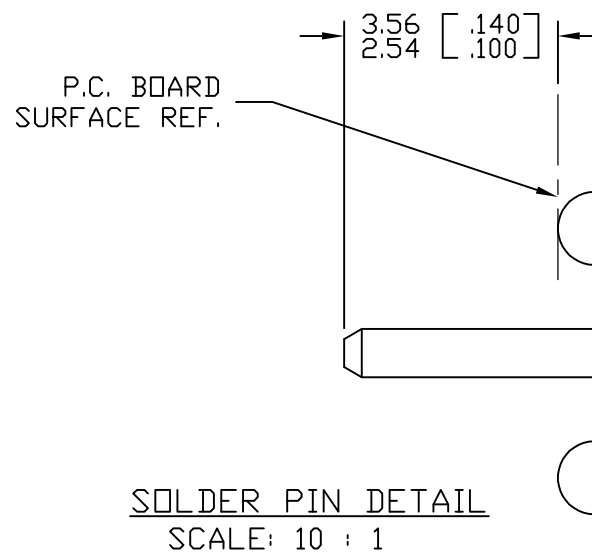
1

REVISIONS

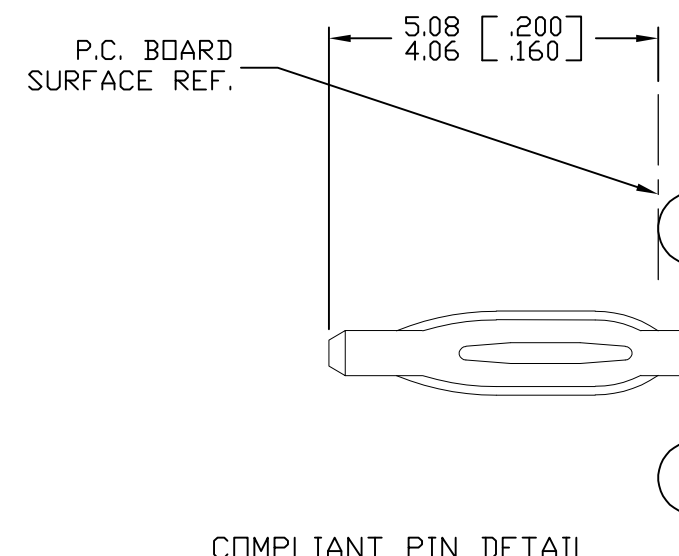
EC	REV	DESCRIPTION	DATE
		SEE SHEET 1	



SOLDER PIN DETAIL
SCALE: 10 : 1



SOLDER PIN DETAIL
SCALE: 10 : 1



COMPLIANT PIN DETAIL
SCALE: 10 : 1

INSERTION/EXTRACTION FORCES
 MAXIMUM PUSH IN: 133.3N PER PIN
 [30 LBS]
 MINIMUM PUSH OUT: 44.4N PER PIN
 [10 LBS]

RECOMMENDED PRINTED CIRCUIT HOLE
 SOLDER OR COMPLIANT PRESS FIT
 FINISHED HOLE: $\phi 1.02$ [.040] ± 0.08 [.003]
 DRILLED HOLE: $\phi 1.15$ [.0453] ± 0.013 [.0005]
 COPPER PLATE: .025 [.0010] MINIMUM (PER SURFACE)
 TIN PLATE: .008 [.0003] MINIMUM (PER SURFACE)

DETAIL A

<p>← MM OR MM [INCH]</p> <p>INCH</p> <p>THIRD ANGLE PROJECTION</p> <p>UNLESS OTHERWISE SPECIFIED DIMENSIONS ARE IN METRIC [INCHES]</p> <p>TOLERANCES</p> <p>ANGLES $\pm .5^\circ$</p> <p>DECIMALS</p> <p>.XX $\pm .25$ [.010] .X $\pm .5$ [.020]</p>	DRAWN HA NGUYEN	DATE 06/24/04	TE Connectivity		
	CHECKED				TITLE USER INFORMATION SOLDER & COMPLIANT TERMINATION CROWNEDGE
	APPROVED		SIZE B	DWG NUMBER C = 6650534	
	APPROVED D. CHAU	06/25/04	ACAD FILE NUMBER C6650534A.DWG		
APPROVED M. ALIM	07/21/04	DWG SCALE 2=1		SH 5 OF 5	

X-ON Electronics

Largest Supplier of Electrical and Electronic Components

Click to view similar products for [Power to the Board](#) category:

Click to view products by [TE Connectivity](#) manufacturer:

Other Similar products are found below :

[6450171-4](#) [6450552-7](#) [6600323-8](#) [6643429-1](#) [6646040-2](#) [6651939-1](#) [6766604-1](#) [120959-1](#) [1393557-2](#) [1393532-2](#) [1393532-3](#) [1393532-4](#)
[1393557-1](#) [1600812-5](#) [1-6450861-2](#) [1744132-7](#) [1761122-1](#) [1766250-1](#) [1892109-1](#) [2-6450860-5](#) [2-6450870-0](#) [1-6450161-4](#) [1-6450850-6](#) [1-](#)
[6450869-6](#) [1645526-2](#) [1-6600130-0](#) [2005243-2](#) [377-0020-11130](#) [TE34-12-16P-F0](#) [51700-10201602AALF](#) [5-6450830-6](#) [5646956-4](#) [377-](#)
[0080-11131A](#) [4-6450830-9](#) [4-6600333-3](#) [10125416-4050LF](#) [6600320-3](#) [3-6450860-5](#) [1888123-2](#) [6450166-1](#) [6643978-1](#) [6766605-1](#)
[701-15-02109](#) [N11444](#) [6651938-1](#) [6450810-7](#) [46437-1112](#) [1-1589677-8](#) [5646956-5](#) [6450813-2](#)