

**SAFETY ORGANIZATION(S):**

THIS FILTER HAS BEEN FORMALLY RECOGNIZED, CERTIFIED OR APPROVED BY THE LISTED AGENCY. THEREFORE, ALL TEST/REQUIREMENTS SPECIFIED IN THE LATEST REVISION OF THE FOLLOWING AGENCY STANDARDS HAVE BEEN MET.

- UL 1283
- CSA 22.2, NO. 0, 0.4, 8
- VDE 565-3
- SENKO APPROVED

**OPERATING SPECIFICATIONS:**

- LINE VOLTAGE/CURRENT, 6 AMP., 120/250 VAC
- 6 AMP./40°C, 250 VAC
- 50-60Hz

**LINE FREQUENCY,**

- MAX. LEAKAGE CURRENT, EACH LINE TO GROUND
- .20 mA at 120V 60 Hz
- .33 mA at 250V 50 Hz

**OPERATING AMBIENT TEMP. RANGE,**

- 10°C TO +40°C @ RATED CURRENT, I<sub>r</sub>
- IN AN AMBIENT, T<sub>a</sub>, HIGHER THAN 40°C, THE MAXIMUM OPERATING CURRENT, I<sub>o</sub>, IS AS FOLLOWS,

$$I_o = I_r \sqrt{\frac{85 - T_a}{45}}$$

**RELIABILITY SPECIFICATIONS:**

- STORAGE TEMPERATURE, -40°C TO +85°C
- HUMIDITY, 21 DAYS @ 40°C 95% RH
- CURRENT OVERLOAD TEST, 6 TIMES RATED CURRENT FOR 8 SECONDS

**TEST SPECIFICATIONS:**

- INDUCTANCE, .465 mH NOMINAL
- CAPACITANCE, (MEASURED @ 1 KHz, 0.25 VAC MAX., 25°C ±1°C)
- LINE TO GROUND, .003µF ±20%
- LINE TO LINE, .047µF ±20%
- DISCHARGE RESISTOR, 1.5 MΩ
- LINE/GROUND AND LINE/LINE 6000 MΩ (MIN) AT 100 VDC
- INSULATION RESISTANCE 20°C AND 50% RH (W/O DISCHARGE RESISTOR)

**RECOMMENDED RECEIVING INSPECTION HIPOT.**

- LINES TO GROUND, 2250 VDC FOR 1 MINUTE
- LINE TO LINE, 1450 VDC FOR 1 MINUTE

**FILTER APPROVAL:**

THE BEST WAY TO SELECT AND QUALIFY A FILTER IS FOR YOUR ENGINEERING TO TEST THE UNIT IN YOUR EQUIPMENT.

**TOLERANCE EXCEPT AS NOTED**

- DECIMAL, .XXX .XX .X ANGLES ± 1°
- ENGLISH, ±.020
- METRIC, ±

**MATERIAL:**

AS SUPPLIED

**FINISH:**

AS SUPPLIED



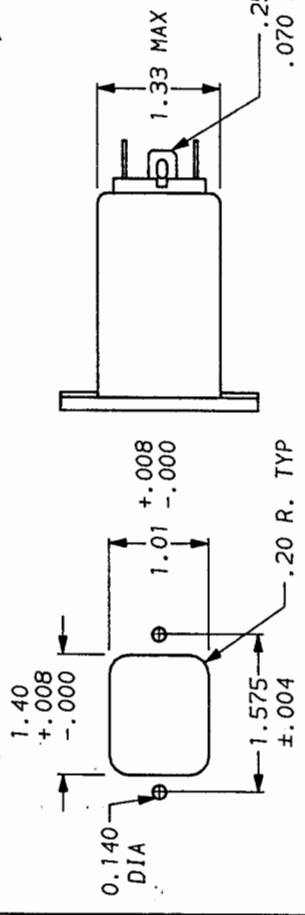
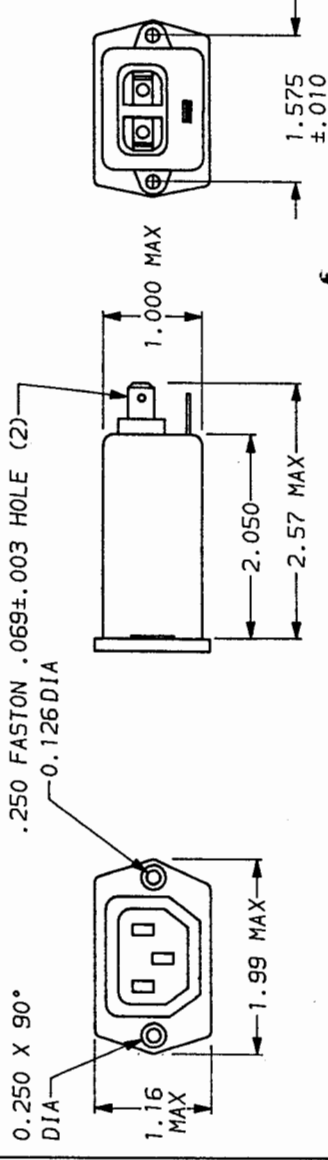
LIBERTYVILLE, IL 60048

ACCESSORY OUTLET FILTER

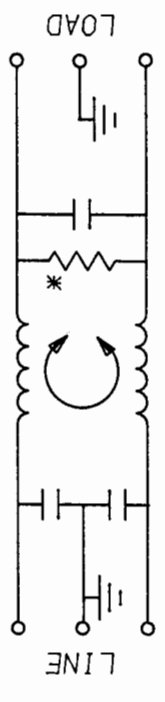
SCALE DATE DRG. NO. NTS 11-5-90

ORIGINATOR CFM

REV. 6EBF1.02



**THIS FILTER LINE AND LOAD ARE REVERSED; THE SOCKET IS LOAD.**



50n - 50n (MINIMUM) INSERTION LOSS										
FREQUENCY MHz	.01	.05	.1	.15	.5	1	3	5	10	30
COMMON	—	—	1	4	10	22	28	37	42	48
DIFF. dB	—	—	1	2	10	14	20	23	24	26

This document is proprietary to CORCOM INC. and is not to be reproduced nor used for manufacturing purposes except on CORCOM's order or prior written consent.

\*RESISTOR ADDED TO PRODUCT BUILT AFTER 3-30-92 (9212)

## X-ON Electronics

Largest Supplier of Electrical and Electronic Components

*Click to view similar products for [AC Power Entry Modules](#) category:*

*Click to view products by [TE Connectivity](#) manufacturer:*

Other Similar products are found below :

[0098.0050](#) [6167.0002](#) [6609100-2](#) [7-6609955-2](#) [FKI2-50-6/M5](#) [FN361-6-06](#) [FN389-4-22](#) [FN9226B-6-02](#) [FN9233S1-10-06](#) [FN9233S1-8-06](#)  
[FN9233S1B-8-06](#) [FN9233S1R-1-06](#) [FN9233S1R-12-06](#) [FN9233SB-1-06](#) [FN9233SB-12-06](#) [FN9233SB-8-06](#) [FN9233SR-10-06](#) [FN9244B-15-06HI](#) [FN9244EB-3-06](#) [FN9244EB-8-06](#) [FN9244ER-15-06](#) [FN9244ER-8-06](#) [FN9244ES1-8-06](#) [FN9244ESB-8-06](#) [FN9244R-12-06](#)  
[FN9244S1-12-06](#) [FN9244S1R-3-06](#) [FN9244SB-8-06](#) [FN9244SR-6-06](#) [FN9244U-3-06](#) [FN9244U-8-06](#) [8-6609940-2](#) [PE00SSSXB](#) [Fuse-H-EUR-1](#) [Fuse-H-USA-1](#) [PM00XD000](#) [A-0701-HT-H](#) [15EJMS8](#) [1-6609941-2](#) [200JM6-2](#) [CA121003-6](#) [SK-1015\(F1-5\)](#) [161-R3015-E](#) [1-6609153-2](#) [FN323-1-05](#) [FN9233B-8-06](#) [FN9233EB-1-06](#) [FN9233ES1R-10-06](#) [FN9233R-12-06](#) [FN9233S-10-06](#)