

APPROVED BY/DATE  
 C. Westerb 10-15-92  
 REV 4

SAFETY ORGANIZATION(S).

THIS FILTER HAS BEEN FORMALLY RECOGNIZED, CERTIFIED OR APPROVED BY THE LISTED AGENCY. THEREFORE, ALL TEST/REQUIREMENTS SPECIFIED IN THE LATEST REVISION OF THE FOLLOWING AGENCY STANDARDS HAVE BEEN MET.

- UL 1283
- UL RECOGNIZED
- CSA 22.2, NO. 0.0.4.8
- CSA CERTIFIED
- VDE APPROVED
- VDE 565-3

OPERATING SPECIFICATIONS:

- LINE VOLTAGE/CURRENT:
- 5 AMP., 120/250 VAC
- 5 AMP/40°C, 250 VAC
- 50-60Hz
- LINE FREQUENCY,
- MAX. LEAKAGE CURRENT, EACH
- LINE TO GROUND
- 0.3mA @ 120V 60Hz
- 0.5mA @ 250V 50Hz
- OPERATING AMBIENT TEMP. RANGE,
- 10°C TO +40°C @ RATED CURRENT, I<sub>r</sub>

IN AN AMBIENT, T<sub>a</sub>, HIGHER THAN 40°C, THE MAXIMUM OPERATING CURRENT, I<sub>o</sub>, IS AS FOLLOWS:

$$I_o = I_r \sqrt{\frac{85 - T_a}{45}}$$

RELIABILITY SPECIFICATIONS:

- STORAGE TEMPERATURE,
- 25°C TO +85°C
- HUMIDITY,
- 21 DAYS @ 40°C 95% RH
- CURRENT OVERLOAD TEST,
- 6 TIMES RATED CURRENT FOR 8 SECONDS

TEST SPECIFICATIONS:

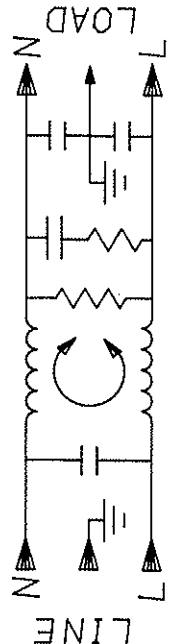
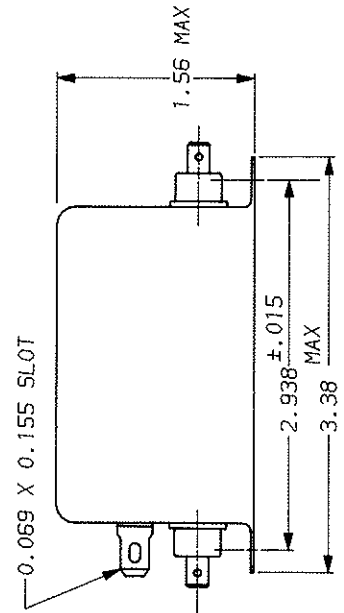
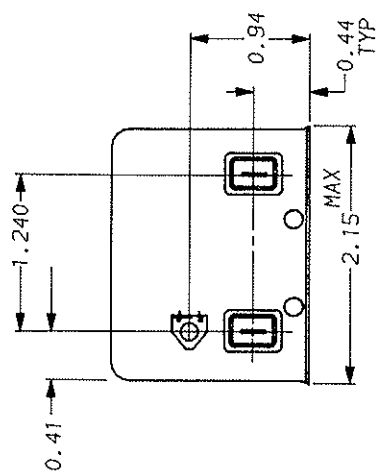
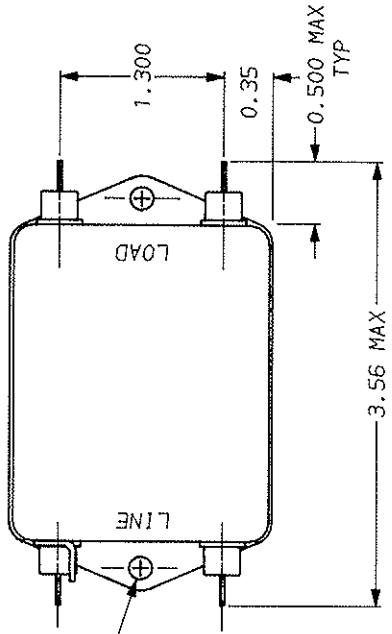
- INDUCTANCE;
- 4.6 mH NOMINAL
- CAPACITANCE; (MEASURED @ 1 KHz, 0.25 VAC MAX., 25°C ±1°C)
- .004µF ±20%
- .57µF ±20%
- LINE TO GROUND,
- LINE TO LINE,
- DISCHARGE RESISTOR,
- 560KΩ
- LINE/GROUND AND LINE/LINE
- INSULATION RESISTANCE
- 6000 MΩ (MIN) AT 100 VDC
- (W/O DISCHARGE RESISTOR)
- 20°C AND 50% RH

RECOMMENDED RECEIVING INSPECTION HIPOT:

- 2250 VDC FOR 1 MINUTE
- 1450 VDC FOR 1 MINUTE

FILTER APPROVAL:

THE BEST WAY TO SELECT AND QUALIFY A FILTER IS FOR YOUR ENGINEERING TO TEST THE UNIT IN YOUR EQUIPMENT.



50Ω - 50Ω MINIMUM INSERTION LOSS									
FREQUENCY	01	05	07	1	15	5	10	20	30
MHz									
COMMON	6	19	23	25	29	48	44	43	40
dB									
DIFF.	4	6	10	24	37	66	75	72	60
dB									

This document is proprietary to CORCOM INC. and is not to be reproduced nor used for manufacturing purposes except on CORCOM's order or prior written consent.

TOLERANCE EXCEPT AS NOTED  
 DECIMAL: .XXX .XX .X ANGLES  
 ENGLISH: ±.025 ±1.  
 METRIC: ±



POWER LINE FILTER  
 SCALE NTS 15-12-88  
 REV. 4  
 6EG1.04

## X-ON Electronics

Largest Supplier of Electrical and Electronic Components

*Click to view similar products for [AC Power Entry Modules](#) category:*

*Click to view products by [TE Connectivity](#) manufacturer:*

Other Similar products are found below :

[0098.0050](#) [6167.0002](#) [6609100-2](#) [7-6609955-2](#) [FKI2-50-6/M5](#) [FN361-6-06](#) [FN389-4-22](#) [FN9226B-6-02](#) [FN9233S1-10-06](#) [FN9233S1-8-06](#)  
[FN9233S1B-8-06](#) [FN9233S1R-1-06](#) [FN9233S1R-12-06](#) [FN9233SB-1-06](#) [FN9233SB-12-06](#) [FN9233SB-8-06](#) [FN9233SR-10-06](#) [FN9244B-15-06HI](#) [FN9244EB-3-06](#) [FN9244EB-8-06](#) [FN9244ER-15-06](#) [FN9244ER-8-06](#) [FN9244ES1-8-06](#) [FN9244ESB-8-06](#) [FN9244R-12-06](#)  
[FN9244S1-12-06](#) [FN9244S1R-3-06](#) [FN9244SB-8-06](#) [FN9244SR-6-06](#) [FN9244U-3-06](#) [FN9244U-8-06](#) [8-6609940-2](#) [PE00SSSXB](#) [Fuse-H-EUR-1](#) [Fuse-H-USA-1](#) [PM00XD000](#) [A-0701-HT-H](#) [15EJMS8](#) [1-6609941-2](#) [200JM6-2](#) [CA121003-6](#) [SK-1015\(F1-5\)](#) [161-R3015-E](#) [1-6609153-2](#) [FN323-1-05](#) [FN9233B-8-06](#) [FN9233EB-1-06](#) [FN9233ES1R-10-06](#) [FN9233R-12-06](#) [FN9233S-10-06](#)