

C. Westby 5-26-92
APPROVED BY/DATE
REV

SAFETY ORGANIZATION(S).
THIS FILTER HAS BEEN FORMALLY RECOGNIZED, CERTIFIED OR APPROVED BY THE LISTED AGENCY. THEREFORE, ALL TEST/REQUIREMENTS SPECIFIED IN THE LATEST REVISION OF THE FOLLOWING AGENCY STANDARDS HAVE BEEN MET.

UL 1283
CSA 22.2, NO. 0.0.4, 8
VDE APPROVED
SEV 1055/TP19177/5.1.1

OPERATING SPECIFICATIONS:
LINE VOLTAGE/CURRENT:

6 AMP., 120/250 VAC
5 AMP./40°C, 250 VAC

LINE FREQUENCY:
MAX. CASE RISE & RATED CURRENT,
MAX. LEAKAGE CURRENT, EACH
LINE TO GROUND
OPERATING AMBIENT TEMP. RANGE:

50-60Hz
-10°C to +40°C @ RATED CURRENT, I_r
-25mA at 120V 60 Hz
.40 mA at 250V 50 Hz
-10°C TO +40°C @ RATED CURRENT, I_r

RELIABILITY SPECIFICATIONS:
STORAGE TEMPERATURE:
HUMIDITY:
CURRENT OVERLOAD TEST:

IN AN AMBIENT, T₀, HIGHER THAN 40°C, THE MAXIMUM OPERATING CURRENT, I₀, IS AS FOLLOWS:
 $I_0 = I_r \sqrt{\frac{85-T_0}{45}}$
-40°C TO +85°C
21 DAYS @ 40°C 95% RH
6 TIMES RATED CURRENT FOR 8 SECONDS

TEST SPECIFICATIONS:
INDUCTANCE:
CAPACITANCE: (MEASURED @ 1 KHz, 0.25 VAC MAX., 25°C ±1°C)
LINE TO GROUND,
LINE TO LINE,
DISCHARGE RESISTOR,
LINE/GROUND AND LINE/LINE
INSULATION RESISTANCE
(W/O DISCHARGE RESISTOR)

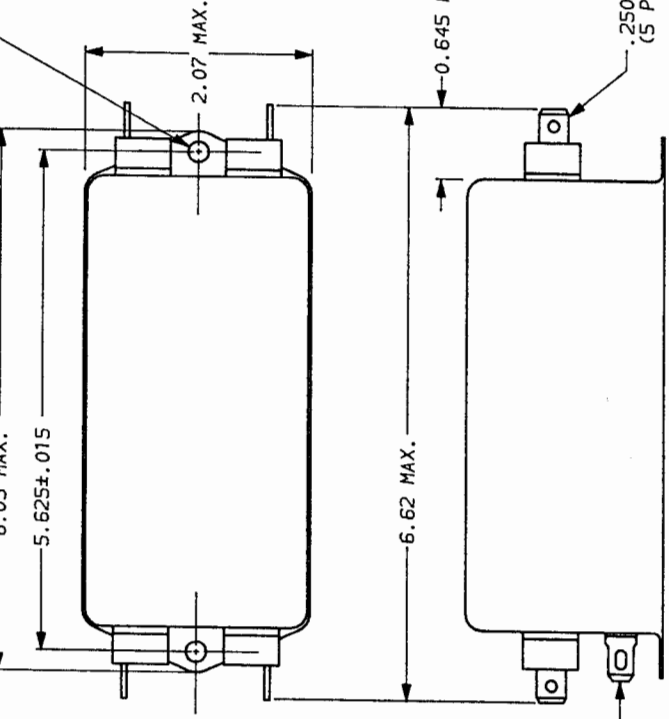
17.46 mH NOMINAL
0.0056µF ±20%
.811µF ±20%
330 KΩ
5000 MΩ (MIN) AT 100 VDC
20°C AND 50% RH

RECOMMENDED RECEIVING INSPECTION HIPOTEST:
LINES TO GROUND:
LINE TO LINE:

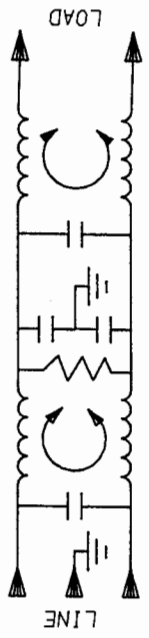
2250 VDC FOR 1 MINUTE
1450 VDC FOR 1 MINUTE

FILTER APPROVAL:
THE BEST WAY TO SELECT AND QUALIFY A FILTER IS FOR YOUR ENGINEERING TO TEST THE UNIT IN YOUR EQUIPMENT.

.25 X .187 SLOT
EITHER OR BOTH ENDS
AND/OR
.187±.010 DIA



0.069 X 0.155 SLOT



50Ω - 50Ω (MINIMUM) INSERTION LOSS

FREQUENCY MHz	.01	.04	.05	.06	.15	.5	10	20	30
COMMON	10	1	15	22	60	65	65	38	35
DIFF.	1	2	3	3	30	65	65	35	35

This document is proprietary to CORCOM INC. and is not to be reproduced nor used for manufacturing purposes except on CORCOM's order or prior written consent.

TOLERANCE EXCEPT AS NOTED

DECIMAL: .XXX .XX .X ANGLES ± 1°
ENGLISH: ±.025
METRIC: ±

MATERIAL: AS SUPPLIED

FINISH: AS SUPPLIED



POWER LINE FILTER

SCALE: NTS 9-12-89
DATE: 9-12-89
DESIGNER: TDL
DRAWN BY: CW
REV. NO.: 6EP1.06

X-ON Electronics

Largest Supplier of Electrical and Electronic Components

Click to view similar products for [Power Line Filters](#) category:

Click to view products by [TE Connectivity](#) manufacturer:

Other Similar products are found below :

[6609019-3](#) [6609026-5](#) [6609030-6](#) [6609973-2](#) [D30A](#) [7-1609090-5](#) [F2810](#) [F4456A](#) [F7382Z](#) [F7863Z](#) [FAHAV3100ZC000](#) [806276](#) [FN2020B-1-06](#) [FN2080B-10-06](#) [FN2410H-32-33](#) [FN2410H-80-34](#) [FP144](#) [FS4153-20-06](#) [FS4353-500-99](#) [12-MMB-030-11-D](#) [DB4-393](#) [15811T200](#) [20B1](#) [LC630](#) [2B1](#) [1609080-2](#) [1609993-8](#) [1-6609070-1](#) [F1100AA02](#) [F1150CC10](#) [F1500CA10](#) [F1500CA15](#) [F4041Z](#) [F7585E](#) [1B1](#) [FN2070A-16-06](#) [FN2090A-20-06](#) [FN2090B-12-06](#) [FN2090Z-1-06](#) [FN2410H-25-33](#) [FN2410H-60-34](#) [FN2410H-8-44](#) [FN2412H-8-44](#) [FN323B-6-01](#) [FN3258H-130-35](#) [FN610R-3-06](#) [20EHQ7](#) [20EHZ7](#) [20K1](#) [30B6](#)